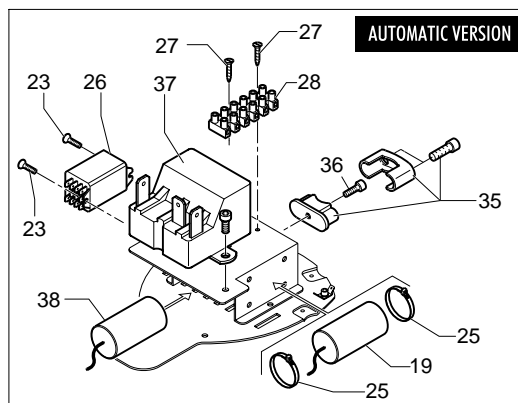
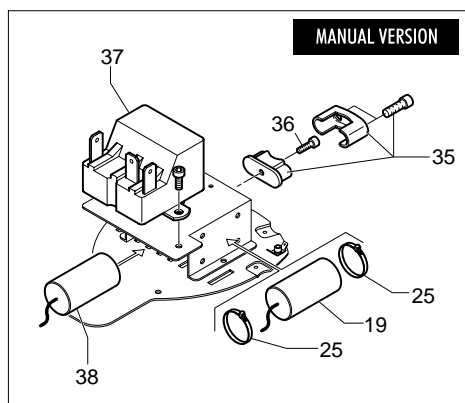
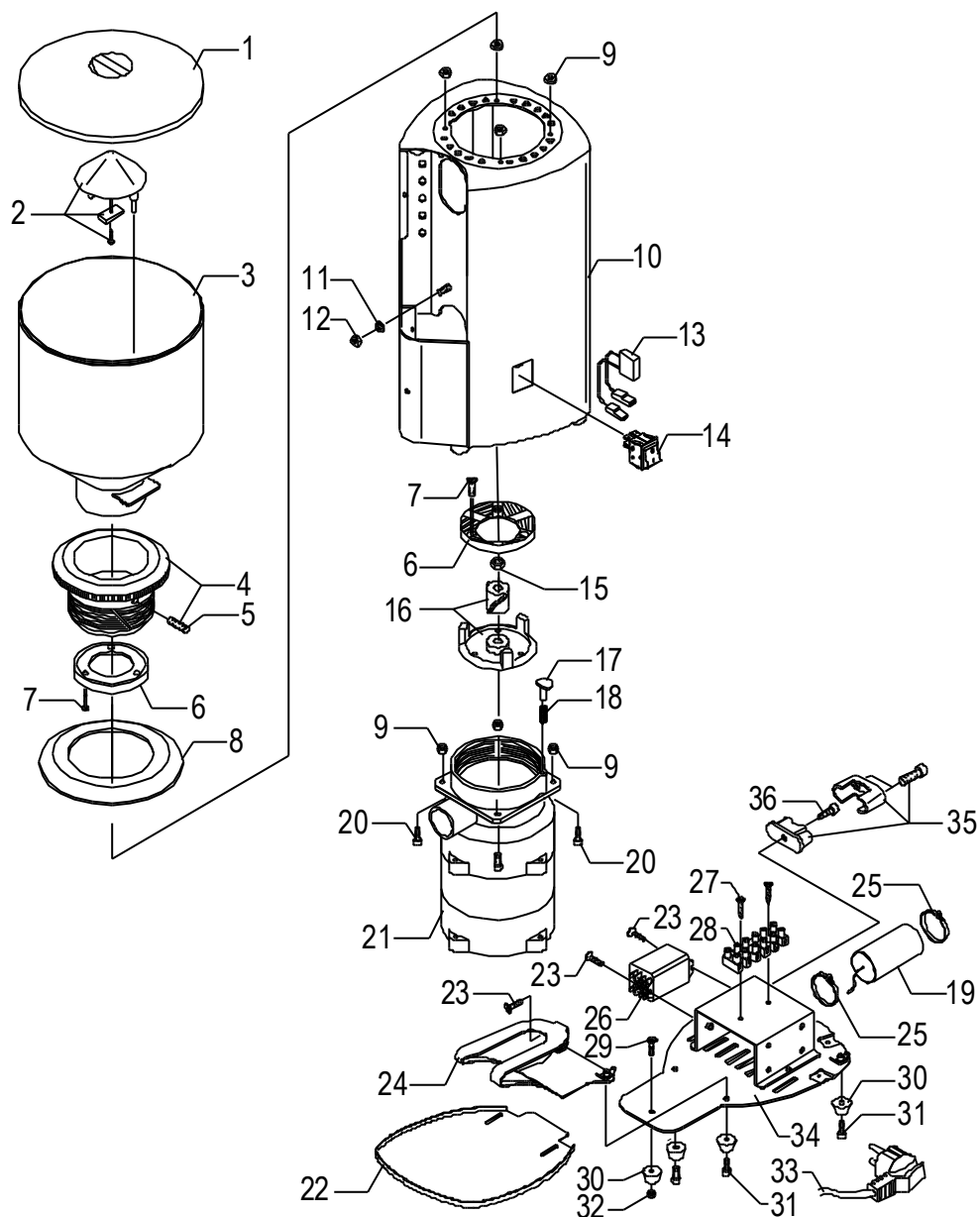




BB003



POS	DESCRIPTION	CODE	REFERENCE
01	COVER FOR HOPPER 1 KG	0BEB01	EB 01
02	SAFE-FINGER CAP WITH MAGNET AND SCREW	0BEB04C	EB 04C
03	HOPPER 1.5 KG	0BG02	G02
04	REGULATOR	0BEB053	EB 053
05	FLAT DOWEL M6 X 10	0BMQ51	MQ 51
06	GRINDSTONE COUPLE	0BEB08	EB 08
07	SCREW TC M4X10	0BMQ36	MQ 36
08	SCREW COVER RING	0BEB085	EB 085
09	NUT D5 FLANGED	0BBB45F	BB 45F
10	BLUE CHASSIS WITH LOGO	5346318LL-YB	-
10	GOLD CHASSIS WITH LOGO	5346316LL-DT	-
10	STAINLESS STEEL CHASSIS WITH LOGO	5346316LL	-
10	BLACK CHASSIS WITH LOGO	5346318LL-VM	-
10	RED RAL 3000 CHASSIS WITH LOGO	5346318LL-VT	-
10	BLUE CHASSIS WITHOUT LOGO	5346319LL-YB	-
10	GOLD CHASSIS WITHOUT LOGO	5346317LL-DT	-
10	STAINLESS STEEL CHASSIS WITHOUT LOGO	5346317LL	-
10	BLACK CHASSIS WITHOUT LOGO	5346319LL-VM	-
10	RED RAL 3000 CHASSIS WITHOUT LOGO	5346319LL-VT	-
11	WASHER D6	0BMQ43/6	MQ 43/6
12	NUT D6	0BMQ45/6	MQ 45/6
13	ANTIJAMMING FILTER	0BEB078	EB 078
14	LIGHT SWITCH 110/120V	0BEB079	EB 079
14	LIGHT SWITCH 380V	0BEB079T	EB 079T
15	NUT M8	0BMQ45/8	MQ 45/8
16	FAN	0BEB090	EB 090
17	CATCH STUD	0BEB06	EB 06
18	SPRING FOR CATCH STUD	0BEB05	EB 05
19	CONDENSER 6.3 μ F 220-240V	0BBB6	-
19	CONDENSER 20 μ F 110V	0BBB20	-
20	SCREW	0BBB53	BB53
21	MOTOR 220-240V (RPM NEW)	0BBB703	-
21	MOTOR 110-120V (RPM NEW)	0BBB803	-
22	DRIP TRAY	5070645LW	-
23	SCREW TC M3 X 16	0BMQ35	MQ 35
24	FORK	5079908LL	-
25	CONDENSER CLAMP	0BEB96	EB 96
26	RELAY 110V	0BEB074	-
26	RELAY 220V	0BEB073	-
26	RELAY 380V	0BEB074T	-
27	SCREW M2,9 X 16	0BMQ55	MQ55
28	CLAMP	0BEB096	-
29	SCREW TC M4X10	0BMQ36TSP	MQ 36TSP
30	RUBBER FEET WITHOUT SCREW	0BEB019	EB 019
31	SCREW TC M4X10	0BMQ36	MQ 36
32	NUT	7822601	-
33	CABLE WITH AUSTRALIAN PLUG	7552001	J 720
33	CABLE WITH ENGLISH PLUG	7554001	J 822
33	ELECTRIC CABLE MONOPHASE 110V WITH USA PLUG	0BEB89110	EB 89110
33	ELECTRIC CABLE MONOPHASE 230V WITH SHUKO PLUG	0BEB89	EB 89
34	COMPLETE BOTTOM BB003	5346320LL	-
35	COMPLETE CABLE LOCK	0BEB0890B0	EB 0890B0

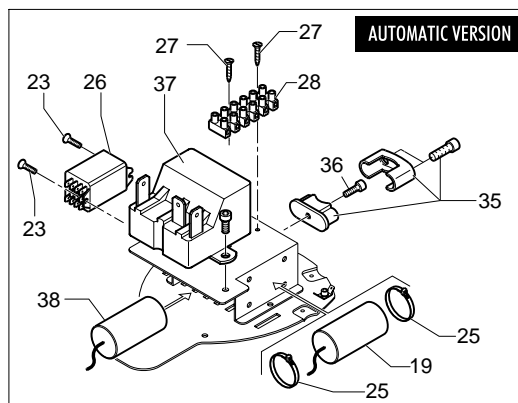
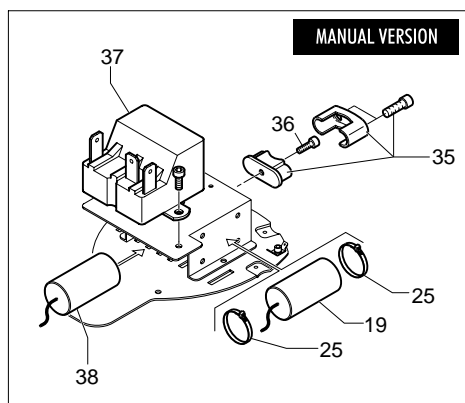
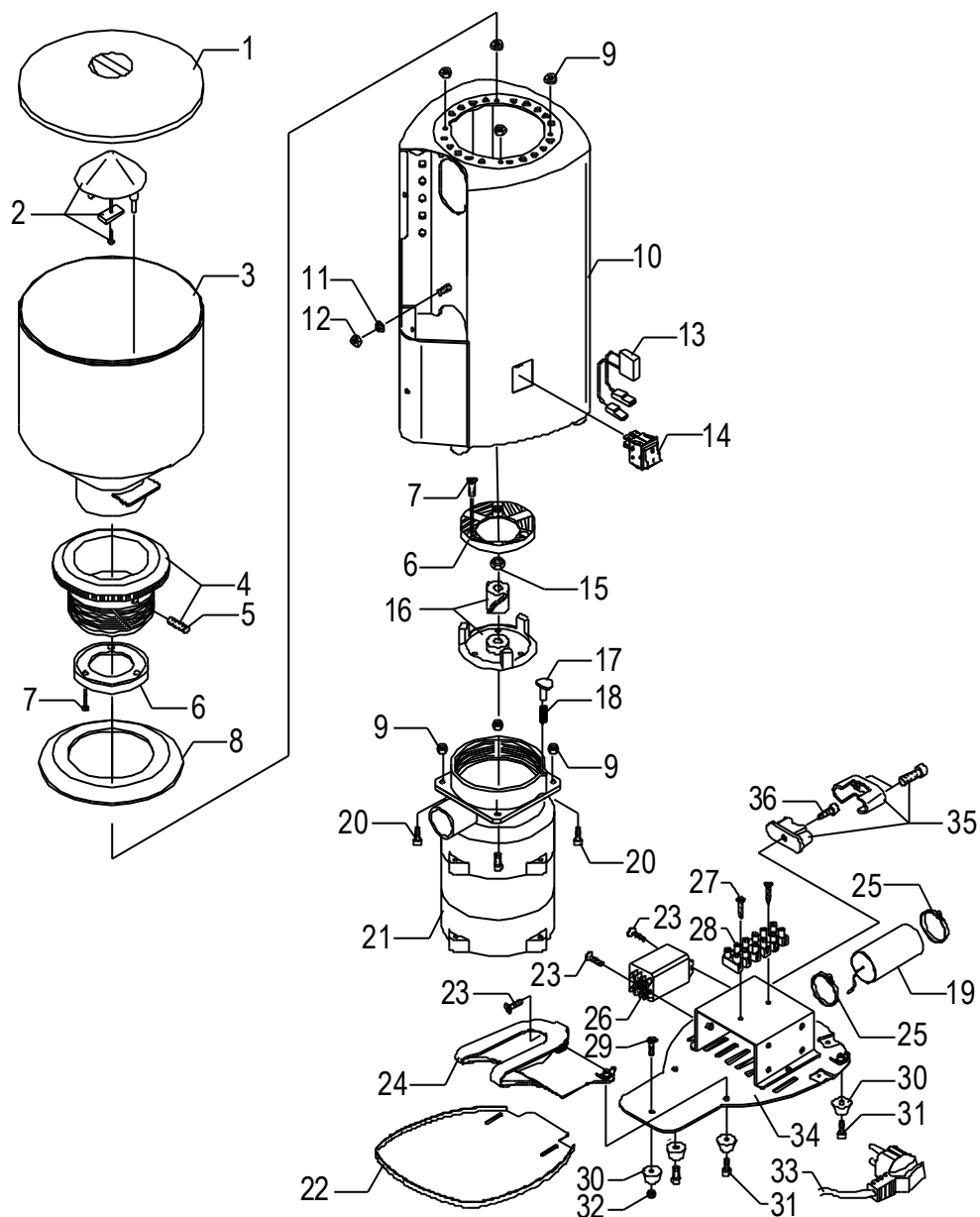




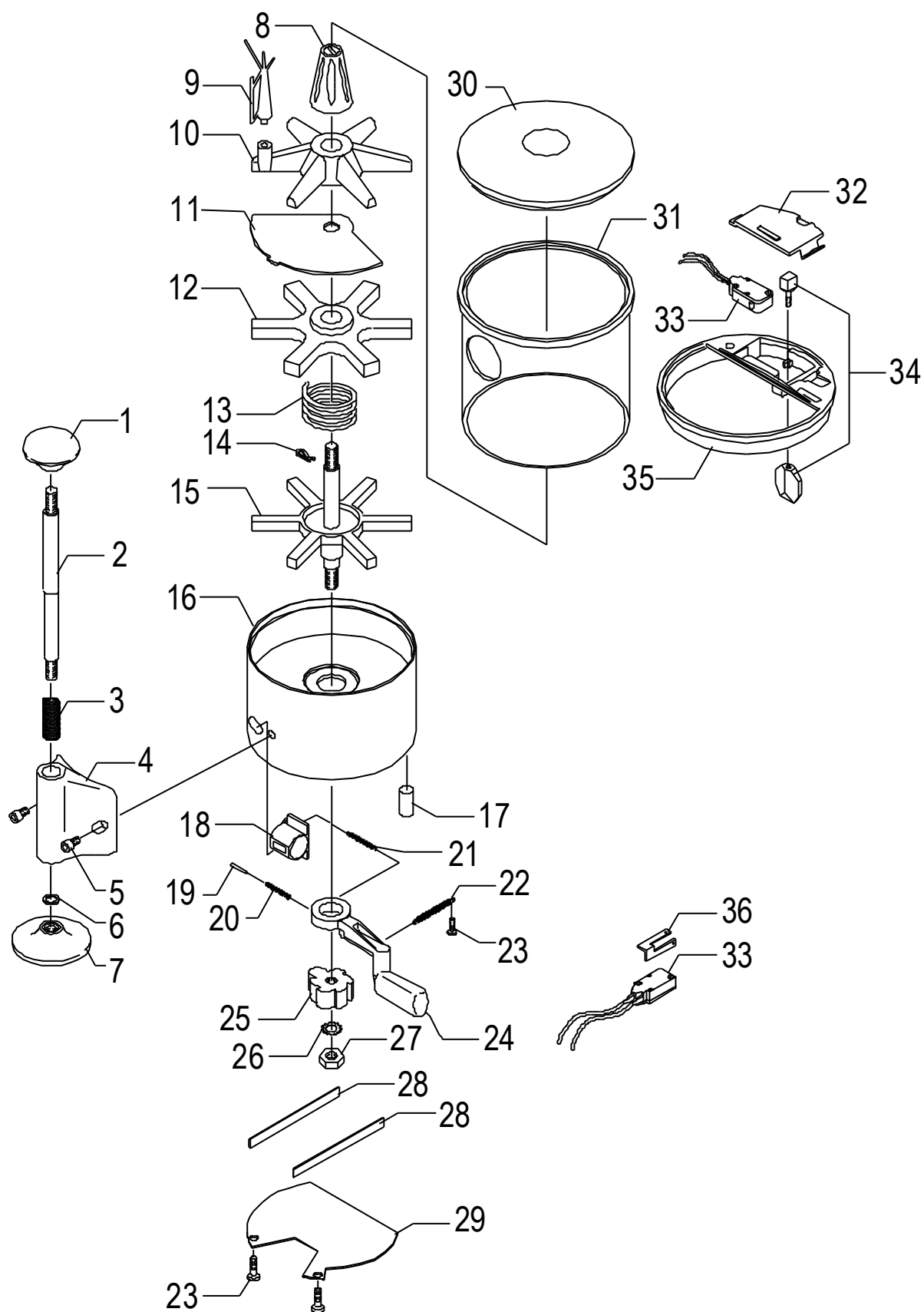
BEZZERA
dal 1901

Tav. 01

POS	DESCRIPTION	CODE	REFERENCE
36	SCREW TC M5X12	0BMQ38	MQ 38
37	RELAY 2CR4-125 (220-240V)	0BBB73	-
37	RELAY 2CR4-148 (110V)	0BBB73/120	-
38	CONDENSER 10 μ F 220-240V	0BBB10	-
38	CONDENSER 35 μ F 110V	0BBB35	-



POS	DESCRIPTION	CODE	REFERENCE
01	UPPER COFFEE-PRESS KNOB	0BEB047P	-
02	COFFEE-PRESS ROD	0BEB045	EB 045
03	SPRING	0BEB041	EB 041
04	SUPPORT	0BEB039P	-
05	SCREW M5 X 8	0BMQ37CE	-
06	OR RUBBER GASKET	0BDS69	DS 69
07	COFFEE-PRESS	0BEB037P	-
08	DOSAGE ADJUSTMENT KNOB	0BEB048	EB 048
09	GLASS-SCRAPER SPRING	0BEB050	EB 050
10	UPPER STAR	0BEB042	EB 042
11	DIAPHRAGM	0BEB060	EB 060
12	INTERMEDIATE STAR	0BEB059	EB 059
13	SPRING	0BEB061	EB 061
14	SPLIT PIN	0BEB043	EB 043
15	BOTTOM STAR	0BEB062	EB 062
16	DOSING RING	0BEB071	EB 071
17	BUMPER	0BEB030	EB 030
18	STROKE COUNTER	0BEB054	EB 054
19	STUD	0BEB056	EB 056
20	SPRING FOR STUD	0BEB057	EB 057
21	STROKE COUNTER SPRING	0BEB028	EB 028
22	HAND LEVER RETURN SPRING	0BEB055	EB 055
23	SCREW TC M5X10	0BMQ37	MQ 37
24	DOSER HAND	0BEB029P	-
25	DIVISOR GEAR	0BEB092	EB 092
26	WASHER D8	0BMQ42	MQ 42
27	NUT M8	0BMQ45	MQ 45
28	SPRING STAINLESS STEEL SHEET	0BEB070	EB 070
29	DOSER BOTTOM	0BEB093	EB 093
30	DOSER COVER	0BEB051	EB 051
31	DOSER CYLINDER	0BEB094	EB 094
32	MICROSWITCH COVER	0BEB087	-
33	MICROSWITCH WIRED	0BEB066MC	-
34	ALUMINIUM FEELER	0BEB088A	-
34	PLASTIC FEELER	0BEB088P	-
35	MICROSWITCH HOUSING	0BEB086	-
36	MICROSWITCH ACTUATOR	0BEB067	-
37	STOP MICROSWITCH WIRED	0BEB066AC	-



POS	DESCRIPTION	CODE	REFERENCE
01	COVER FOR HOPPER	0BEB82	-
02	LOCK	0BEB8	-
03	SAFE-FINGER CAP WITH MAGNET AND SCREW	0BEB04C	EB 04C
04	HOPPER	0BG02CC	G02CC
05	DOSER COVER	0BEB81	-

