



CB 840

LIST OF THE EXPLODED VIEWS



SHELL ASSY

COOLING SYSTEM

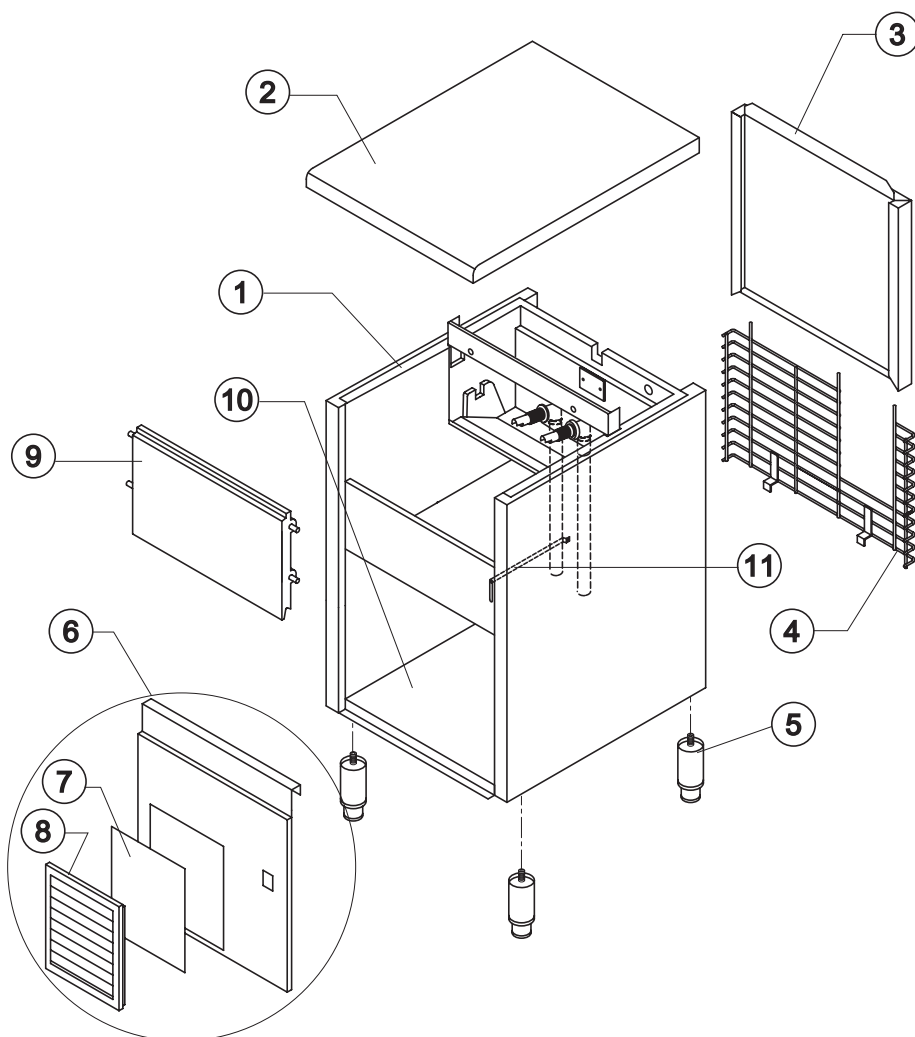
HYDRAULIC CIRCUIT

ELECTRIC PARTS



CB 840

SHELL ASSY



| Ref. | Spare Description | Code |
|------|---------------------------------|------------------|
| 1 | Foamed Cabinet Assy | See Table |
| 2 | Top Assembly | C22673 |
| 3 | Rear Panel Assembly | C21184 |
| 4 | Rear Grid | D12015 |
| 5 | Adjustable Stainless Steel Foot | 20613 |
| 6 | Front Grid Panel | C22509 |
| 7* | Filtering Panel | 18106 |
| 8 | Frame + Grid & Filter | C10205 |
| 9 | Door Assy | C10275 |
| 10 | Base Plate | 21280 |
| 11 | Bulb-holder Pipe | Current Version |
| 11 | Bulb-holder Pipe | Till s/n. 258692 |

Ref. 1 - Foamed Cabinet Assy

| Condensation | Code |
|--------------|---------|
| Air | C11009A |
| Water | C11009W |



CB 840

COOLING SYSTEM

Common Parts

| Ref. | Spare Description | Code |
|------|----------------------------|------------------------|
| 5 | Sucking Fan | 10213 |
| 6 | Fan Fixing Hub | 10014 |
| 7 | Evaporator Cover Panel | Current Version 10448 |
| 7 | Evaporator Cover Panel | Till s/n. 224658 10039 |
| 8 | Evaporator | See Table - |
| 9* | Solid Core Drier | 14089 |
| 10 | Compressor | See Table - |
| 11 | Vacuum-Charge Valve Body | 14007 |
| 12* | Vacuum-Charge Valve Device | 14005 |
| 13* | Vacuum-Charge Valve Plug | 14006 |
| 14* | Hot Gas Valve Coil | See Table - |
| 15* | Hot Gas Valve Body | 20410 |

Parts for Air-Cooled Version Only

| Ref. | Spare Description | Code |
|------|------------------------|-------|
| 1 | Air Condenser | 20264 |
| 3 | Air Condenser Conveyor | 10163 |
| 4 | Sucking Fan | 20031 |

Parts for Water-Cooled Version Only

| Ref. | Spare Description | Code |
|------|-------------------|------------------------|
| 2 | Water Condenser | 14034 |
| 4 | Sucking Fan | Till s/n. 221034 10213 |

Ref. 8 - Evaporator

| Kind of Cube | Code |
|------------------|--------|
| 18 g. (Standard) | D10047 |
| 33 g. | D10090 |
| 13 g. | D10418 |
| 42 g. | D10480 |

Ref. 10 - Compressor

| Voltage | Code |
|---------|--------|
| T11 | 23875 |
| T12 | 23504A |
| T13 | 23552 |
| T19 | 23552 |

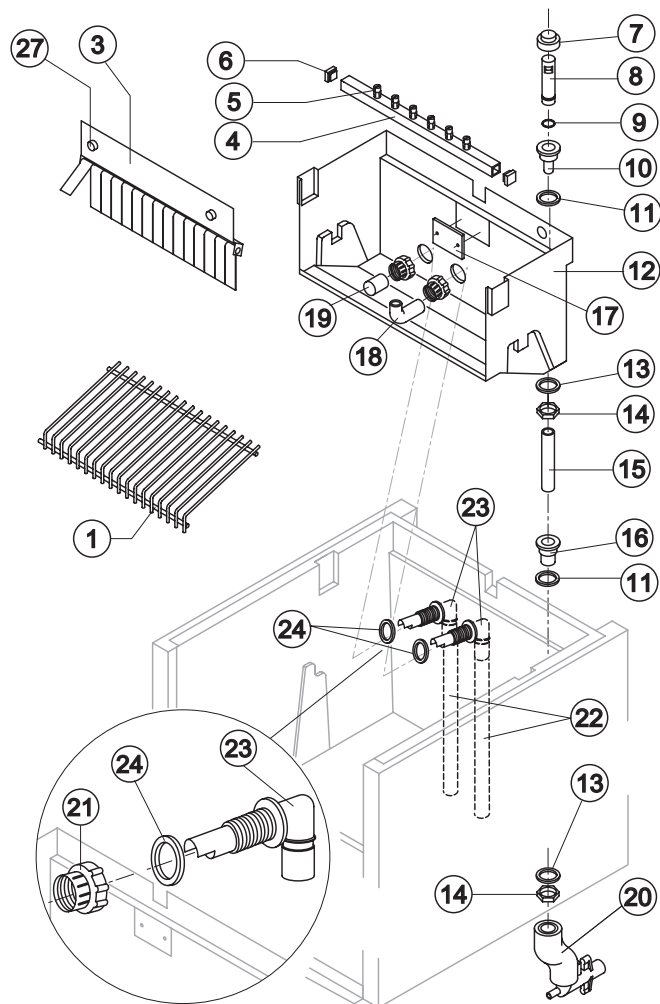
Ref. 14* - Hot Gas Valve Coil

| Voltage | Code |
|---------|-------|
| T11 | 23091 |
| T12 | 23091 |
| T13 | 23256 |
| T19 | 23256 |



CB 840

HYDRAULIC CIRCUIT



Ref. 1 - Ice Cube Slide

| Kind of Cube | Code |
|------------------|--------|
| 18 g. (Standard) | D12017 |
| 33 g. | D12031 |
| 13 g. | D12039 |
| 42 g. | D12071 |

Ref. 4* - Sprayers Bar Ass.

| Kind of Cube | Code |
|------------------|--------|
| 18 g. (Standard) | C20058 |
| 33 g. | C20156 |
| 13 g. | C20190 |
| 42 g. | C20802 |

Common Parts

| Ref. | Spare Description | Code |
|------|--|------------------|
| 1 | Ice Cubes Slide | See Table |
| 3 | Flags Support Assy | C22059 |
| 4* | Sprayers Bar Assembly | See Table |
| 5 | Sprayer | D20002 |
| 6 | Sprayers Bar Plug | 10012 |
| 7* | Overflow Cap | 10305 |
| 8* | Overflow Pipe | 10133 |
| 9* | OR Gasket for Overflow Pipe | 20233 |
| 10 | Overflow Pipe Nipple | 10471 |
| 11 | Silicone Gasket | 13006 |
| 12 | Inner Basin | 10034 |
| 13 | Semirigid Polyethylene Gasket | 13007 |
| 14 | Bin Discharge Nut | 10096 |
| 15* | Overflow Pipe | 13109 |
| 16 | Water Outlet Nipple | 10472 |
| 17 | Slide Keep Plate | Till s/n. 227891 |
| 18 | Sprayers Feeding Pipe | 13005 |
| 19* | Pump Suction Filter | 20005 |
| 21 | Fittings Locking Ring | 10405 |
| 22 | Pump Suction/Delivery Pipe | 13140 |
| 23 | Fitting of the Pump Suction/Delivery Pipes | 10404 |
| 24 | Gasket for Pump Suction/Delivery Pipes | 13143 |
| 27 | Fixing Screw | 20009 |

Parts for Air Cooled Version Only

| Ref. | Spare Description | Code |
|------|---------------------|--------|
| 20 | Discharges Manifold | C10006 |

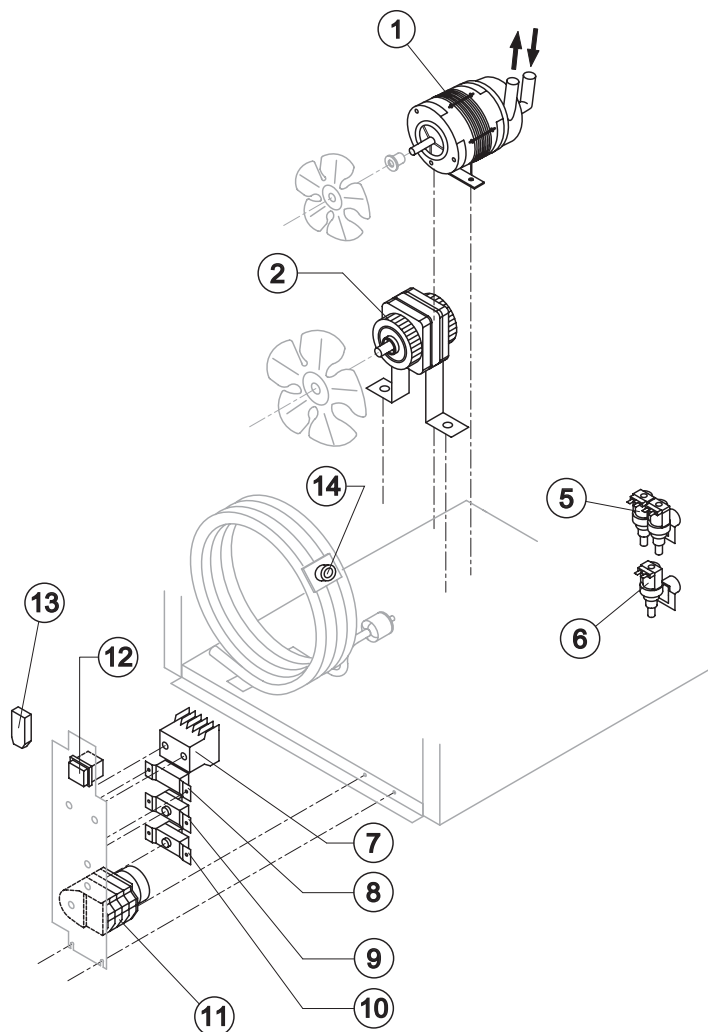
Parts for Water Cooled Version Only

| Ref. | Spare Description | Code |
|------|---------------------|--------|
| 20 | Discharges Manifold | C26452 |



CB 840

ELECTRIC PARTS



Common Parts

| Ref. | Spare Description | Code |
|------|-----------------------------|----------------------|
| 1* | Pump Assy | See Table - |
| 2* | Fan Motor | See Table - |
| 7 | Contactor | Only T13 e T19 23595 |
| 8* | Condenser Pressure Switch | See Table - |
| 9* | Bin Thermostat | R23005 |
| 10* | Evaporator Thermostat | R23591 |
| 11* | Timer | See Table - |
| 12* | Green Light Switch (On-Off) | 23327 |

Parts for Air-Cooled Version Only

| Ref. | Spare Description | Code |
|------|--------------------------------|-----------------|
| 6* | 1 Way- Water Inlet Valve | See Table - |
| 13 | Anti Radio Interference Filter | Only T11 C23459 |

Parts for Water-Cooled Version Only

| Ref. | Spare Description | Code |
|------|--------------------------------|-----------------|
| 5* | 2 Ways- Water Inlet Valve | See Table - |
| 13 | Anti Radio Interference Filter | Only T11 C23457 |
| 14* | Safety Thermostat | C23114 |

Ref. 1* - Pump Assy

| Voltage | Code |
|---------|--------|
| T11 | C23377 |
| T12 | C23377 |
| T13 | C23663 |
| T19 | C23663 |

Ref. 2* - Fan motor

| Tension | Air | Water Till s/n. 221034 |
|---------|-------|---------------------------|
| T11 | 23067 | 23029 |
| T12 | 23681 | 23029 |
| T13 | 23621 | 23683 |
| T19 | 23621 | - |

Ref. 5* - 2 Ways- Water inlet valve

| Voltage | Cube 18g/13g | Cube 33g | Cube 42g |
|---------|--------------|----------|----------|
| T11 | 23010 | 23010 | 23781 |
| T12 | 23010 | 23781 | 23781 |
| T13 | 23261 | 23758 | 23758 |
| T19 | 23261 | 23758 | 23758 |

Ref. 6* - 1 Way - Water Inlet valve

| Voltage | Cube 18g/13g | Cube 33g | Cube 42g |
|---------|--------------|----------|----------|
| T11 | 23001 | 23001 | 23220 |
| T12 | 23001 | 23220 | 23220 |
| T13 | 23260 | 23281 | 23281 |
| T19 | 23260 | 23281 | 23281 |

Ref. 8* - Cond. Pressure Switch

| Voltage | Code |
|---------|-------|
| T11 | 23175 |
| T12 | 23175 |
| T13 | 23175 |
| T19 | 23680 |

Ref. 11* - Timer

| Voltage | 18g Cube | 33g Cube | 13g Cube | 42g Cube |
|---------|----------|----------|----------|----------|
| T11 | 23222 | 23248 | 23247 | 23780 |
| T12 | 23248 | 23780 | 23247 | 23780 |
| T13 | 23259 | 23786 | 23258 | 23786 |
| T19 | 23259 | 23786 | 23258 | 23786 |