

HORIZONTAL COUNTERS
TAVOLI ORIZZONTALI

ECOSTORE h700

Remote right side connections

Type ref.	Ref	Page	Description	Brand
H7NTN2R	a	3 to 13	Counter 2 compartments refrigerated remote HP	all
H7NTN3R	b	3 to 13	Counter 3 compartments refrigerated remote HP	all
H7NTN4R	c	3 to 13	Counter 4 compartments refrigerated remote HP	all
H7NBT2R	d	3 to 14	Counter 2 compartments freezer remote HP & CL	all
H7NBT3R	e	3 to 14	Counter 3 compartments freezer remote HP & CL	all

Note:

The range of freezer included counters HP and CL.

The control panel for HP(Hight performance) they are to pag. 13.

The range of CL is only freezer (reference d,e, same to HP).

The control panel for CL (Concept Line) they are to pag. 14

Index

Identification Type Ref./Identificazione type Ref.	2
Body module/corpo armadio	3
Spare part list/Lista ricambi	4
Door and drawers/ Porte e cassetti	5,6,7
Spare part list/Lista ricambi	8
Top/Ripiano	9
Spare part list/Lista ricambi	10
Connections cooling unit Refrig. & Freezer/Connessione gruppo Refrigerato & Freezer	11
Spare part list/Lista ricambi	12
Control panel/Pannello di controllo HP counters	13
Control panel/Pannello di controllo CL counters	14
Spare part list/Lista ricambi	15

Bold= last change/Grassetto =ultima modifica

CL= Concept Line

HP= Hight performance

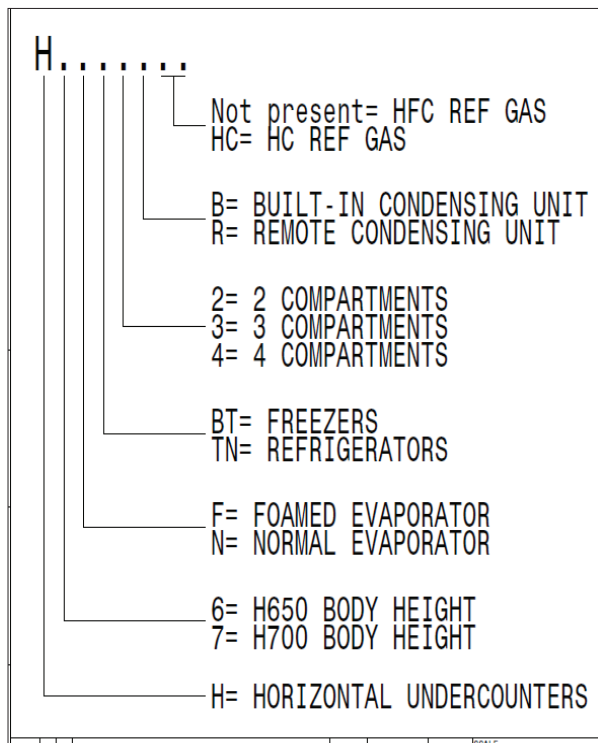
Rev. 2

From Ser. Nr.... Up to Ser. Nr....	Ed. 2017/06/08 Updated 2023/07	Page: 1	Doc No:595R32100
---------------------------------------	-----------------------------------	---------	-------------------------

How to put in relation the “Type Ref.” reported on the data plate with the “Type reference” reported on the front page of the Spare Part Catalogue:

The “Type Ref.” represents a group of models/brands all with similar technical features, hence possible to be reported under the same scheme in terms of exploded views.

Find below an identification example: **H7NTN2BHC**



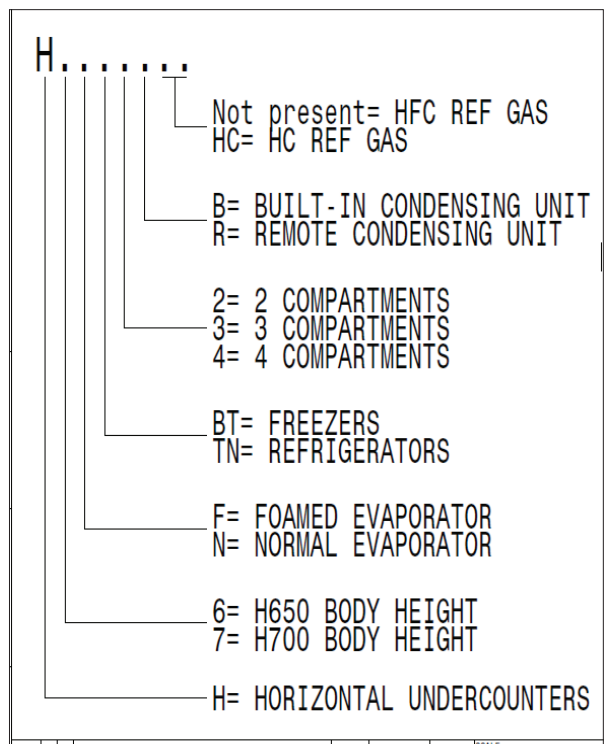
F. Mod. EH2H7AA	Comm. Mod. EH2H7AA	Type Ref. H7NTN2BHC	2017
PNC 9VTX 710000 00	Ser. No. 70810001	Cyclopentane	
W Tot. 0.25 kW	Volt 220-240 V	1 ~ 50 Hz	Total Current 1.9 A
Potenza Sbrinamento / Defrost Power	0.29 kW	Classe/Class 5	GWP 3 CO2-eq 0 t
Resistenza Evaporazione/Evaporation Heater El.	kW	Refrigerante / Refrigerant R290	0,07 kg.
Illuminazione / Lighting	W	Cap. 240	MADE IN ITALY
NF nominal Charge			
Rated Pressure	MPa		
IP21			
Electrolux Professional SpA - Viale Treviso, 15 - 33170 Pordenone (Italy)			

For the right spare code identification follow the steps:

1. type in the website the PNC reported on the data plate.
2. The website will automatically display this spare part catalogue.
3. The spare part code at this point is referenced through the “Type reference” as from the front page by the relevant “Ref”.

Come mettere in relazione il “Type Ref.” Riportato sulla targhetta caratteristica con il “Type reference” riportato sul frontespizio del catalogo ricambi:

Il “Type Ref.” Rappresenta un gruppo di modelli/marchi con simili caratteristiche tecniche, ossia possibili da rappresentare con il medesimo schema in termini di vista esplosa.



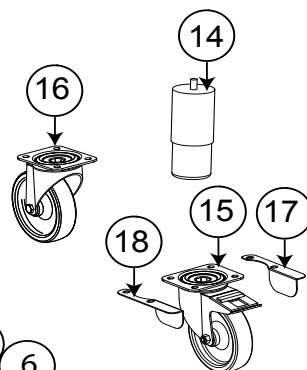
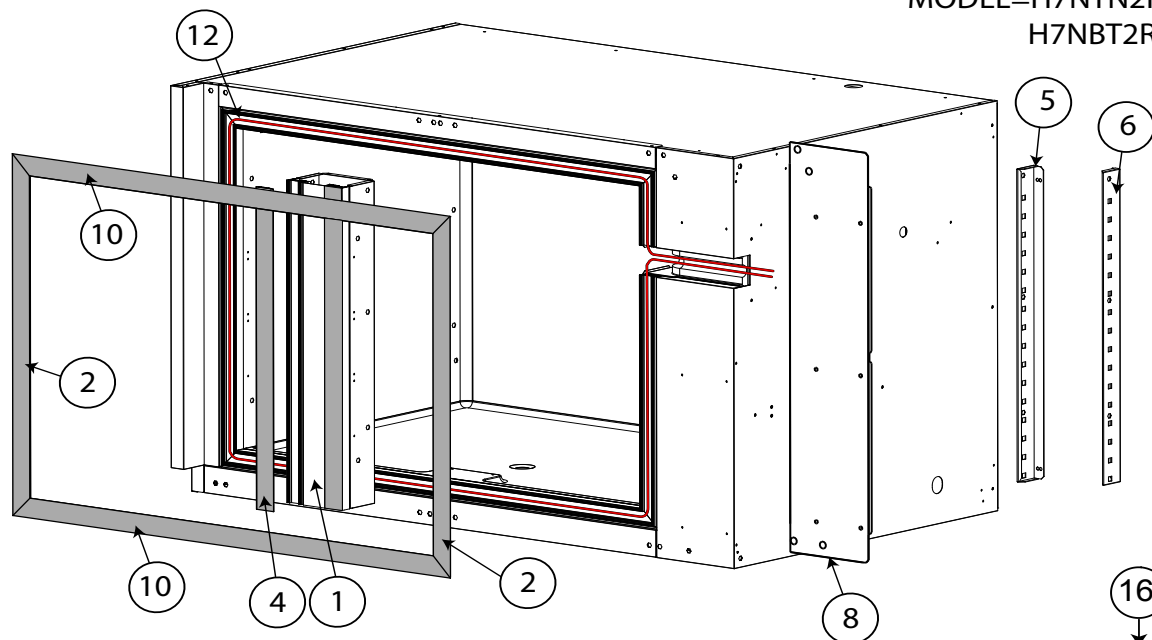
Qui di seguito un esempio di identificazione: **H7NTN2BHC**

F. Mod. EH2H7AA	Comm. Mod. EH2H7AA	Type Ref. H7NTN2BHC	2017
PNC 9VTX 710000 00	Ser. No. 70810001	Cyclopentane	
W Tot. 0.25 kW	Volt 220-240 V	1 ~ 50 Hz	Total Current 1.9 A
Potenza Sbrinamento / Defrost Power	0.29 kW	Classe/Class 5	GWP 3 CO2-eq 0 t
Resistenza Evaporazione/Evaporation Heater El.	kW	Refrigerante / Refrigerant R290	0,07 kg.
Illuminazione / Lighting	W	Cap. 240	MADE IN ITALY
NF nominal Charge			
Rated Pressure	MPa		
IP21			
Electrolux Professional SpA - Viale Treviso, 15 - 33170 Pordenone (Italy)			

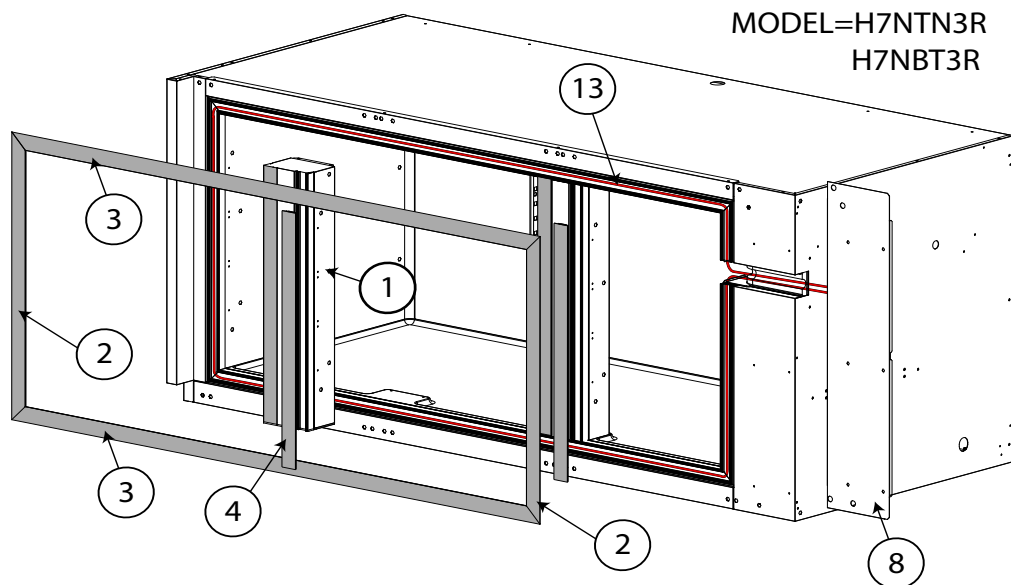
Per identificare il corretto codice ricambio procedere con:

1. Digitare nel website il PNC riportato sulla targhetta caratteristica.
2. Il website mostrerà automaticamente questo catalogo ricambi.
3. A questo punto, il codice ricambio è identificabile attraverso il “Type reference” come indicato nel frontespizio sotto la relativa voce “Ref”.

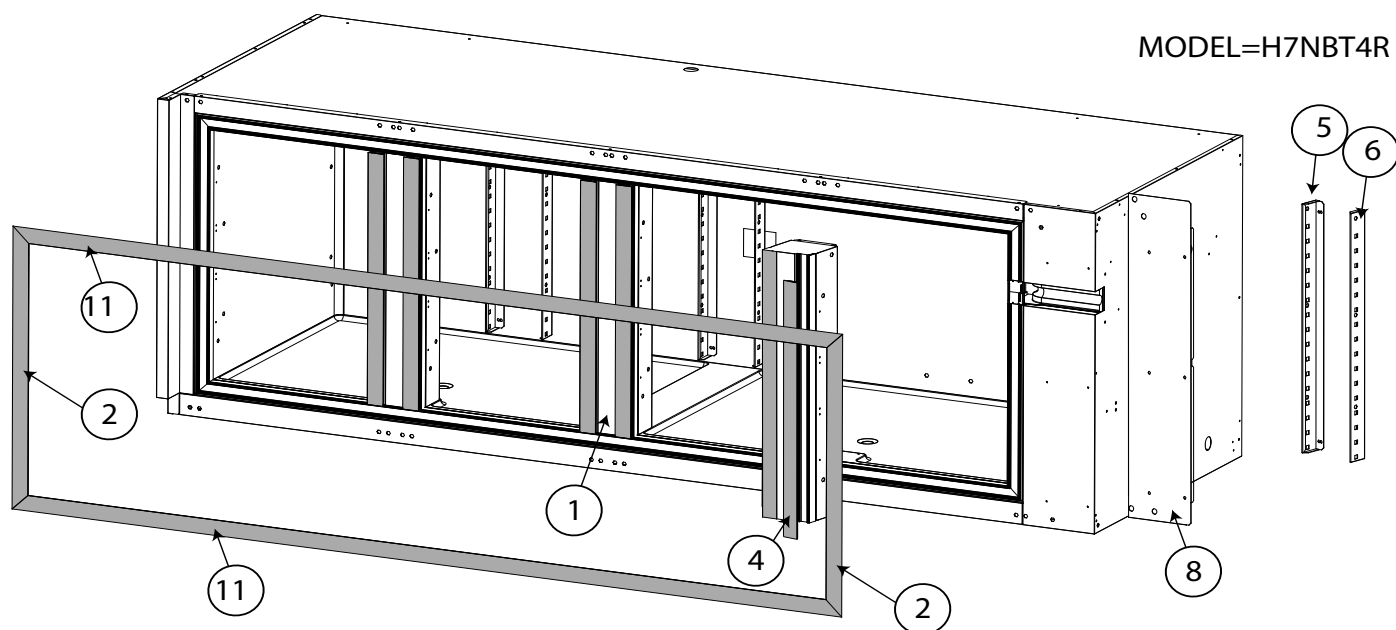
MODEL=H7NTN2R
H7NBT2R



MODEL=H7NTN3R
H7NBT3R



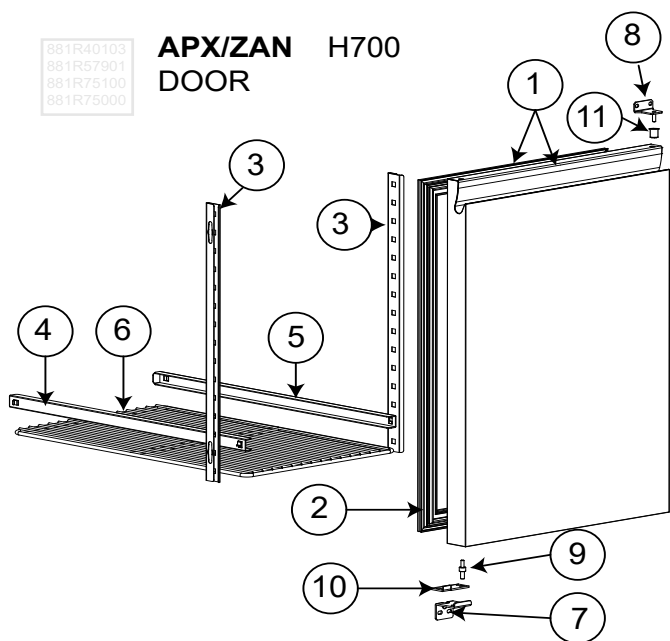
MODEL=H7NBT4R



HORIZONTAL COUNTERS				ECOSTORE HP 700	
Pos	Code	Factory code	Description	Descrizione	Ref/notes
Pag. 3 Body Assembly				Corpo schiumato	
1	095337	835R54002	FOAMED VERTICAL PILLAR ASSEMBLED	MONTANTE ASSEMBLATO	a,b,c up to 9131
1	096522	835R67901	FOAMED VERTICAL PILLAR ASSEMBLED	MONTANTE ASSEMBLATO	a,b,c from 9141 d,e from 9391
1	095345	835R56401	FOAMED VERTICAL PILLAR ASSEMBLED	MONTANTE ASSEMBLATO	d,e up to 9131
1		835R68101	FOAMED VERTICAL PILLAR ASSEMBLED	MONTANTE ASSEMBLATO	d,e from 9141 up to 9381
2	095236	543R16400	VERTICAL FRAME COVER	COPERCHIO CORN.VERT. TAV 2/3/4V	a,b,c
2	095346	543R19801	VERTICAL FRAME COVER	COPERCHIO CORN.VERT. TAV 2V BT	d,e,f
3	095246	543R16600	HORIZONTAL FRAME COVER	COPERCHIO CORN ORIZZ TAV 3V TN	b
3	095253	543R19500	HORIZONTAL FRAME COVER	COPERCHIO CORN ORIZZ TAV 3V BT	e
4	095338	543R17701	VERTICAL FRAME COVER FOR PILLAR	MONTANTE VERTICALE COPERTURA	a,b,c
4	095347	543R19701	VERTICAL FRAME COVER FOR PILLAR	MONTANTE VERTICALE COPERTURA	d,e,f
5	095321	503R16702	REAR RIGHT SUPPORT GRIDS H700	SUPPORTO POSTERIORE DX	
6	095322	502R84504	REAR LEFT SUPPORT GRIDS H700	SUPPORTO POSTERIORE SX	
8		503R43201	FRONT COVER PANEL SIDE (RIGHT) A304	PANNELLO FRONTALE DX A304	
10	095226	543R16500	HORIZONTAL FRAME COVER	COPERCHIO CORN ORIZZ TAV 2V	a
10	095254	543R19400	HORIZONTAL FRAME COVER	COPERCHIO CORN ORIZZ TAV 2V	d
11	095255	543R16700	HORIZONTAL FRAME COVER	COPERCHIO CORN ORIZZ TAV 4V	c
12	099330	617R06701	FRAME HEATING CABLE 2V L 5450 mm	CAVO RISCALDANTE CORNICI 2V porte	d only door
12	095256	617R15600	FRAME HEATING CABLE 2V L 6700 mm	CAVO RISCALDANTE CORNICI 2V	d 1 door_2 1/2 draw.
12	095257	617R15900	FRAME HEATING CABLE 2V L 9140 mm	CAVO RISCALDANTE CORNICI 2V	d 6 1/3 draw.
12	095258	617R15700	FRAME HEATING CABLE 2V L 8320 mm	CAVO RISCALDANTE CORNICI 2V	d 2 1/2 draw._3 1/3 draw.
12	095259	617R15800	FRAME HEATING CABLE 2V L 7490 mm	CAVO RISCALDANTE CORNICI 2V	d 4 1/2 draw. 1 door_3 1/3 draw.
13	094096	617R09500	FRAME HEATING CABLE 3V L 8140 mm	CAVO RISCALDANTE CORNICI 3V	e only door
13	095260	617R16000	FRAME HEATING CABLE 3V L 8600 mm	CAVO RISCALDANTE CORNICI 3V	e 2 door_2 1/2 draw.
13	095261	617R16100	FRAME HEATING CABLE 3V L 9400 mm	CAVO RISCALDANTE CORNICI 3V	e 1 door_4 1/2 draw. 2 door_3 1/3 draw.
13	095262	617R16200	FRAME HEATING CABLE 3V L 10200 mm	CAVO RISCALDANTE CORNICI 3V	e 6 1/2 draw. 1 door_2 1/2 draw._3 1/3 draw.
13	095263	617R16300	FRAME HEATING CABLE 3V L 12700 mm	CAVO RISCALDANTE CORNICI 3V	e 9 1/3 draw.
13	095264	617R16400	FRAME HEATING CABLE 3V L 11030 mm	CAVO RISCALDANTE CORNICI 3V	e 1 door_6 1/3 draw. 4 1/2 draw._3 1/3 drawers
13	095265	617R16500	FRAME HEATING CABLE 3V L 11850 mm	CAVO RISCALDANTE CORNICI 3V	e 2 1/2 draw._6 1/3 drawers
14	096610	0518R01100	FOOT H 150 WHIT CENTRAL SCREW	PIEDE NYLON VITE CENTRALE+ RIVEST. INOX H150	
15	087110	0835739900	WHEEL WITH BRAKE	RUOTA A PIASTRA ROT. CON FRENO	
16	087111	0835740000	WHEEL WITH-OUT BRAKE	RUOTA A PIAST. ROT. SENZA FRENO	
17	095324	0503R38501	RIGHT WHEEL LEVER BRAKE	FERMO RUOTA DESTRO	
18	095325	0503R38601	LEFT WHEEL LEVER BRAKE	FERMO RUOTA SINISTRO	
*		569R09700	EPS INSULATING BLOCK	BLOCCHETTO D'ISOLAMENTO	
19					
20					

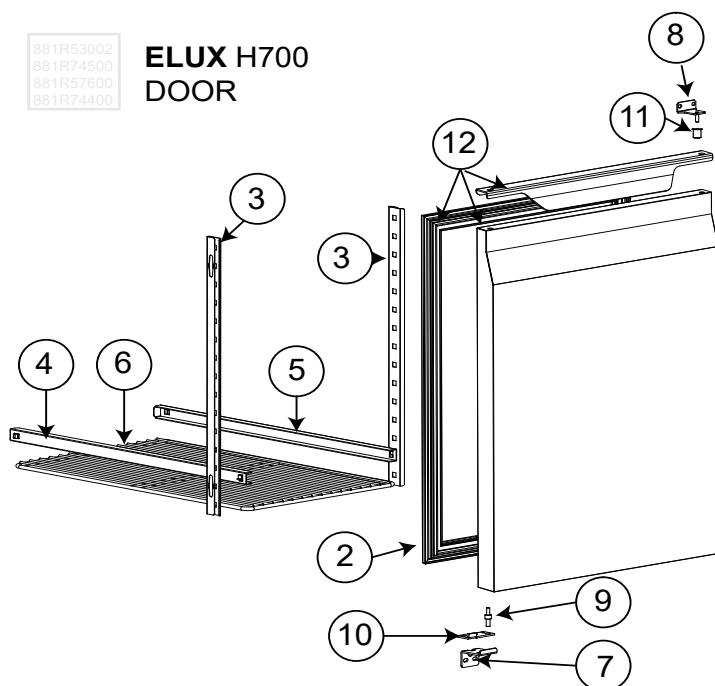
881R40103
881R57901
881R75100
881R75000

APX/ZAN H700 DOOR



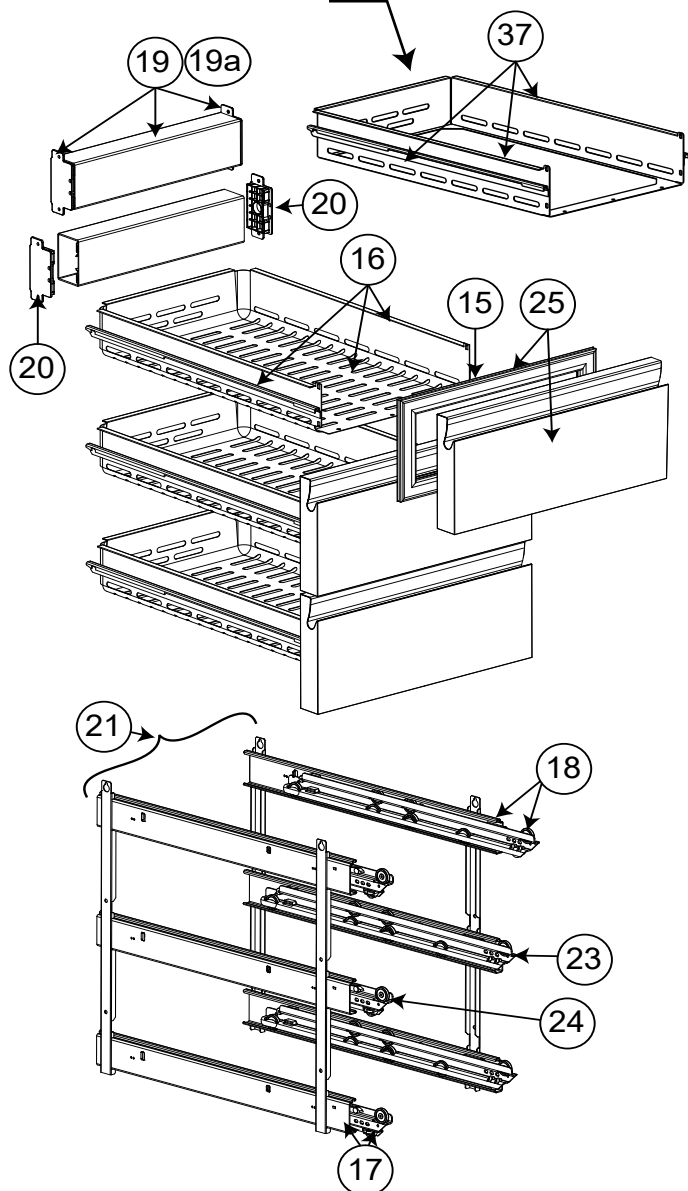
881R53002
881R74500
881R57600
881R74400

ELUX H700 DOOR



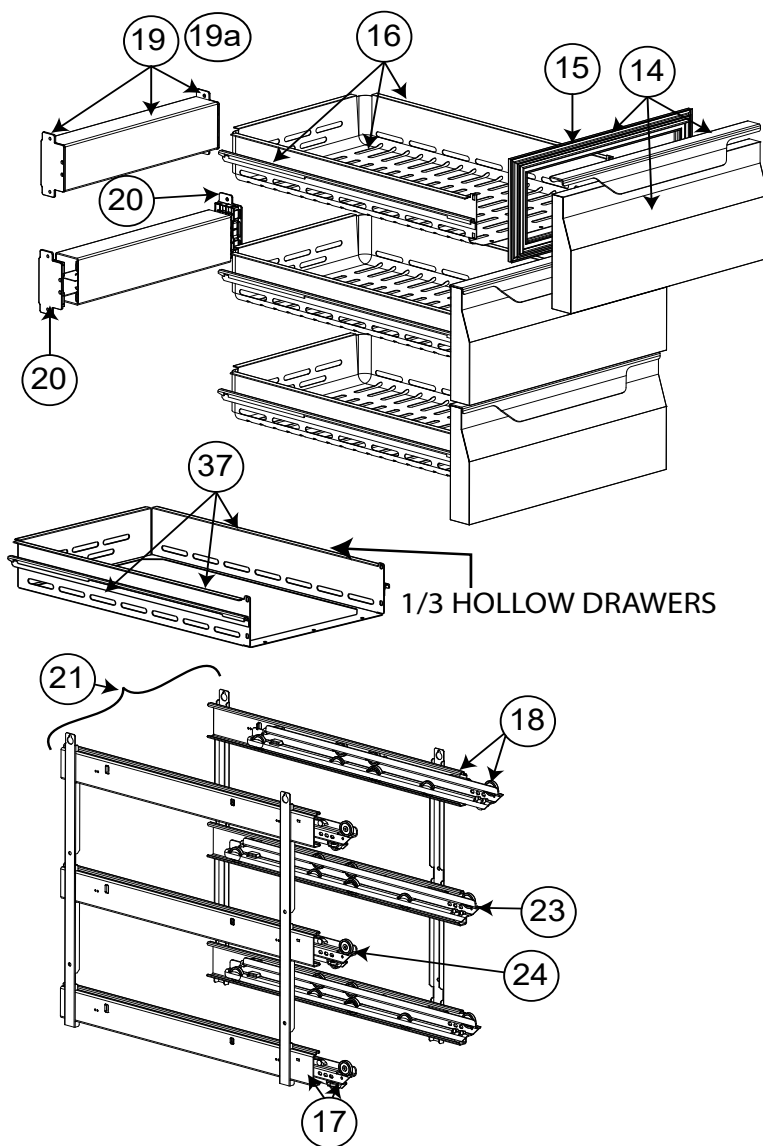
1/3 HOLLOW DRAWERS

APX/ZAN H700 DRAW 1/3

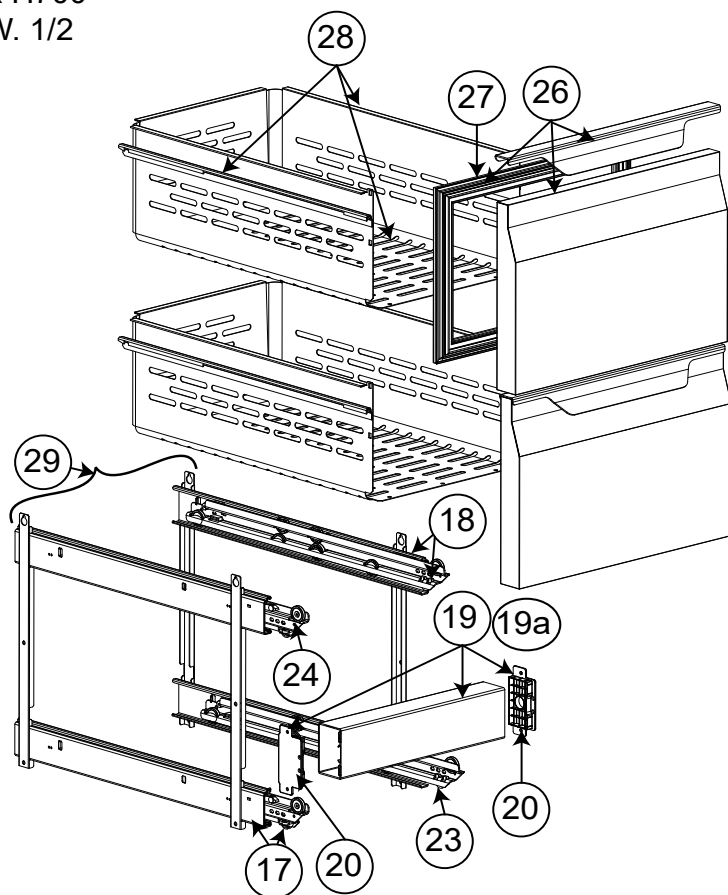


881R57001
881R77000

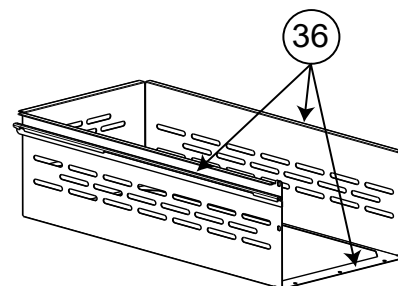
ELUX H700 DRAW. 1/3



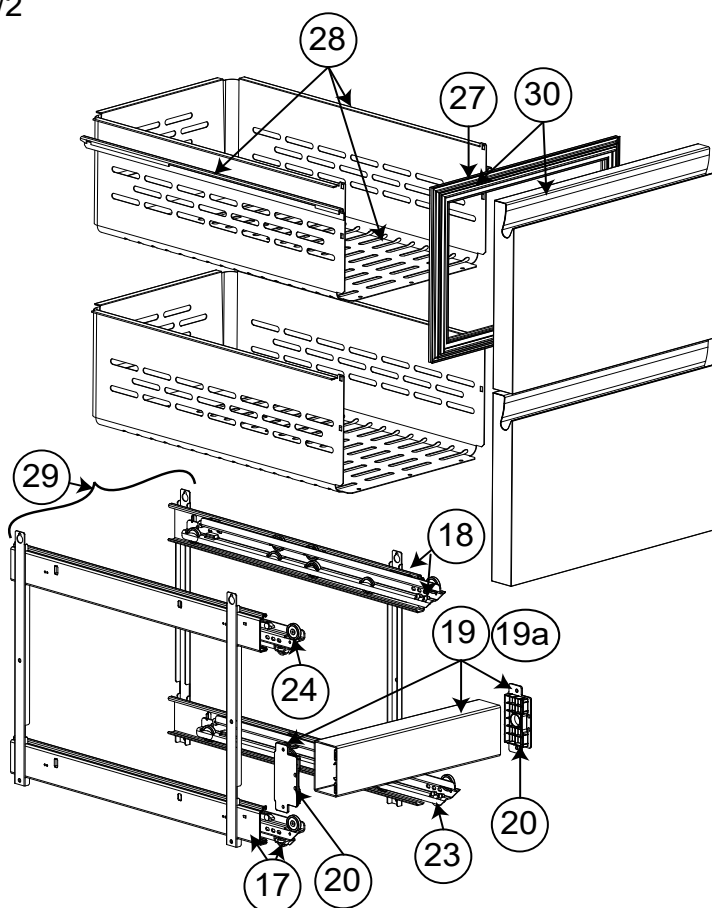
ELUX H700
DRAW. 1/2



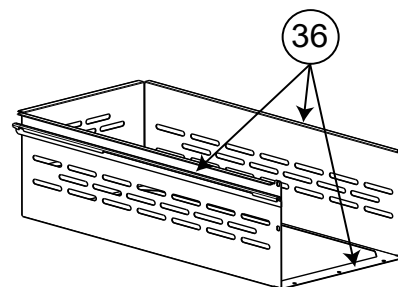
1/2 HOLLOW DRAWERS



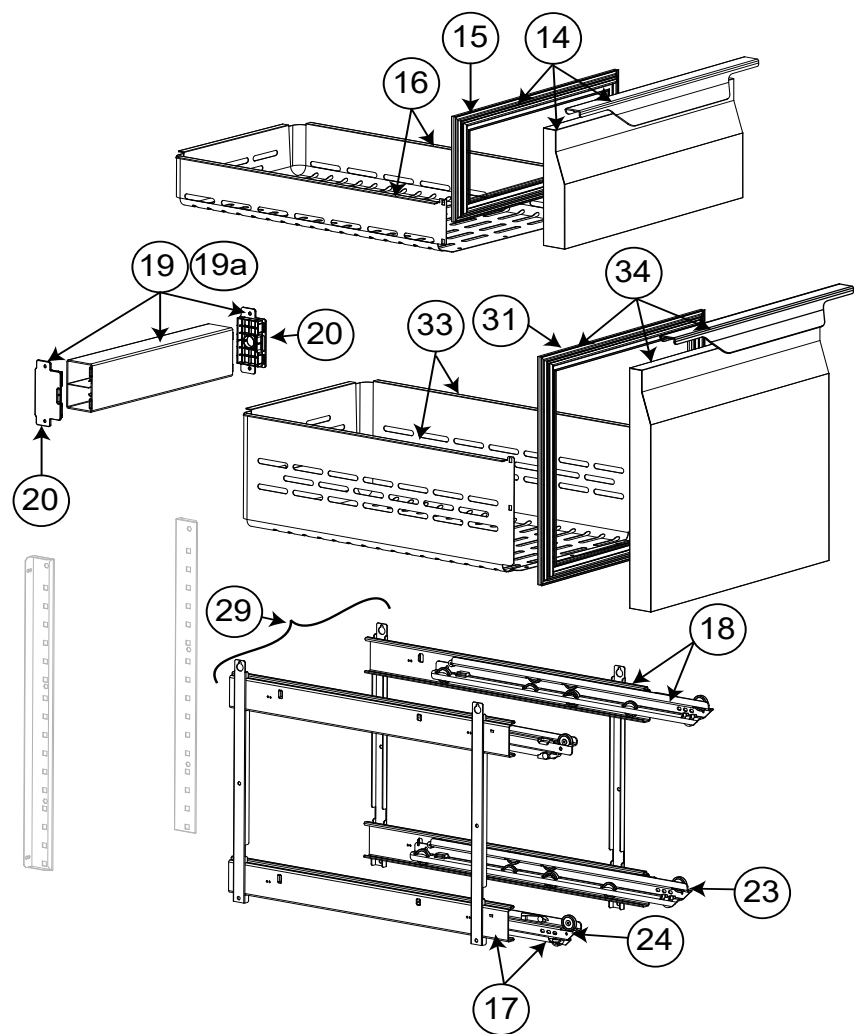
APX/ZAN H700
DRAW.1/2



1/2 HOLLOW DRAWERS

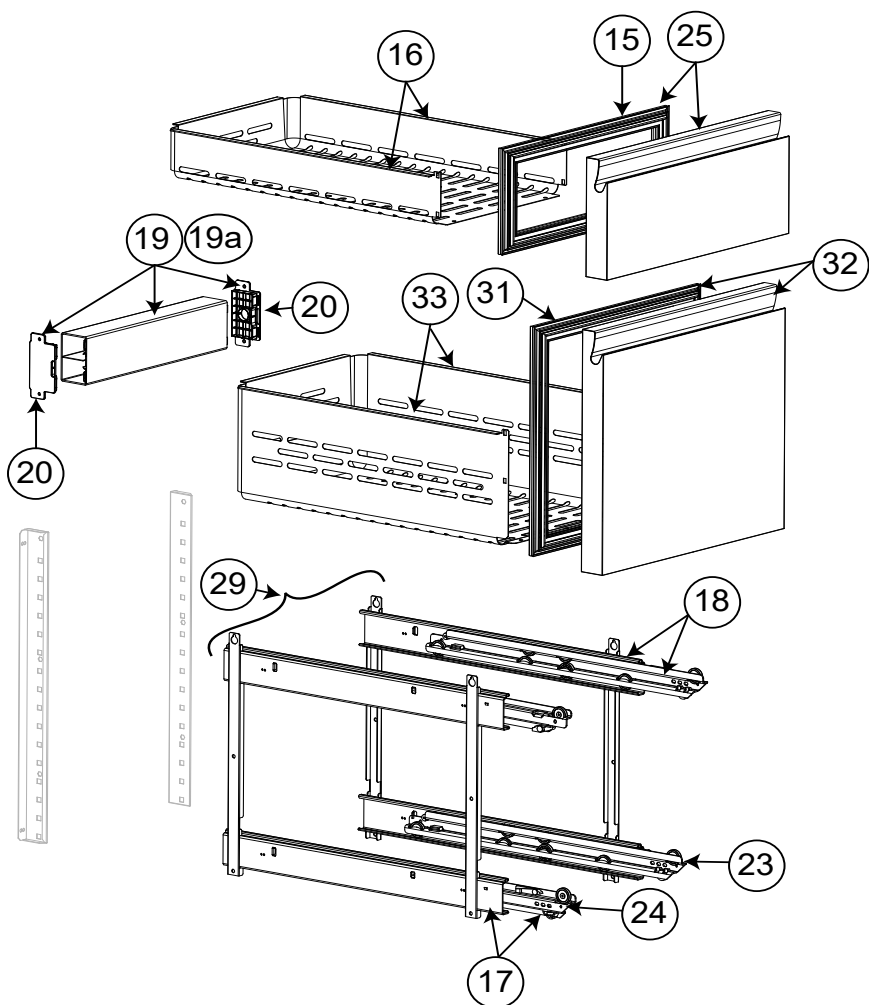


ELUX H700
BOTTLE DRAW.



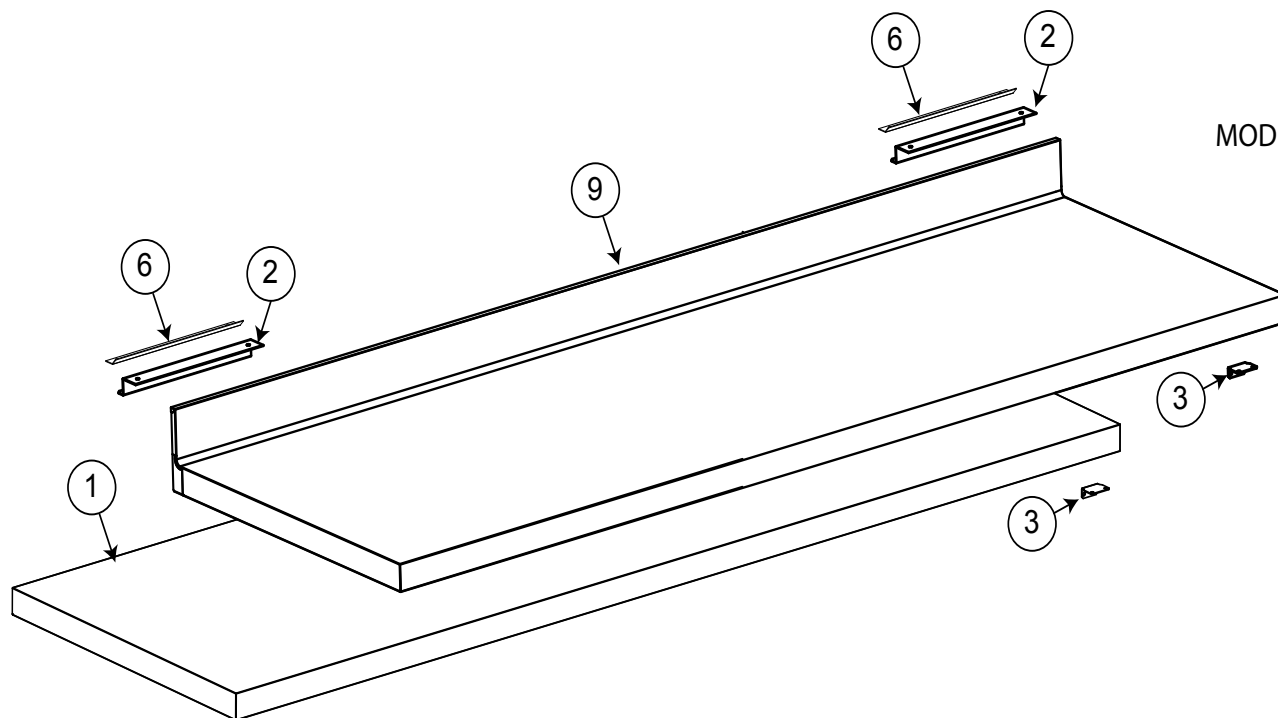
881R70800

APX/ZAN H700
BOTTLE DRAW.

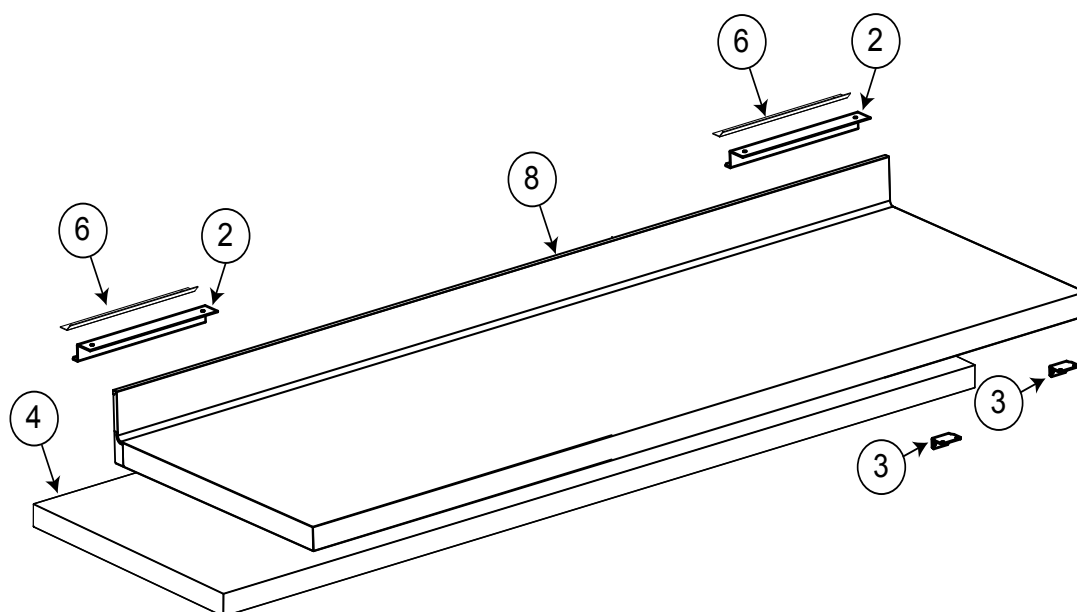


881R70700

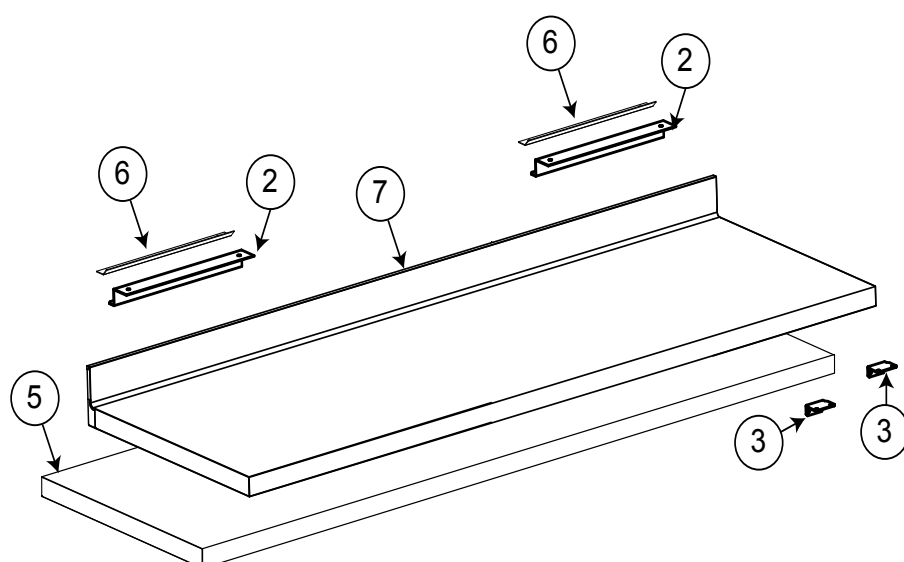
HORIZONTAL COUNTERS				ECOSTORE HP 700	
Pos	Code	Factory code	Description	Descrizione	Ref/notes
reference pag. 5-6-7					
Doors and Drawers				Porta e Cassetti	
1	095802	835R52103	FOAMED D. ASSEMBLY H700 apx/zan	PORTA SCHIU. CON GUARNI.APX_ZAN	brand Apx_Zan
2	095238	548R11101	A886 MAGNETIC GASKET H700	GUARNIZIONE PORTA	
3	095227	503R09701	FRONT SUPPORT GRIDS H700	FRONTALE SUPPORTO GUIDE	
4	095228	502R84601	LEFT GUIDE FOR SHELF	GUIDA A "C" SX TAV NGC H700/H650	
5	095229	502R84701	RIGHT GUIDE FOR SHELF	GUIDA A "C" DX TAV NGC H700/H650	
6	095231	514R23500	SHELF	GRIGLIA RILSAN TAVOLO H650/H700	
7	095326	505R23702	LOWER HINGE H650/H700	CERNIERA INFERIORE	
8	095327	505R23803	UPPER HINGE H650/H700	CERNIERA SUPERIORE	
9	087667	514746701	PIN FOR DOOR	PERNO PER CERNIERA INFERIORE	
10	089146	800735200	DOOR OPENING END COURSE	PIASTRINA FERMO BATTUTA PORTA	
11	081807	549700000	DOOR BUSH	BOCCOLA X CERNIERA	
12	095511	835R51907	FOAMED DOOR ASSEMBLY H700 elux	PORTA CON GUARNIZIONE ELECTR.	brand: Elux
14	095512	835R53506	FOAMED DRAWERS 1/3 ELUX	ASS.CASS.1/3 SCHIUM. TAVOLO ELEC	brand: Elux (+GASKET)
15	095240	548R11801	GASKET DRAWER 1/3	GUARNIZ.CASS.1/3 TAV NGC H700	
16		833R36004	1/3 DRAW+GUIDES (WITHOUT FRONTAL)	ASS.INVOLUCRO CASSETTO+GUIDE	
17	095266	832R23200	LEFT SUPPORT DRAWERS 1/3	CARRELLO SX PER MOD.CASSETTI	
18	095267	832R23300	RIGHT SUPPORT DRAWERS 1/3	CARRELLO DX PER MOD.CASSETTI	
19	095365	875R33501	CROSSBEAM ASSEMBLY - DRAWERS	TRAVERSA CASSETTO 1/ E 1/2 TN	only refrigerated Up to 2019/13
19	096130	835R70800	CROSSBEAM ASSEMBLY - DRAWERS	TRAVERSA CASSETTO TN	only refrigerated From 2019/14
19a	095366	835R53801	FOAM PILLAR ASS. - DRAWERS	TRAVERSA CASSETTO 1/ E 1/2 BT	only freezer
20	095552	543R18901	PLASTIC PILLAR PLUG RIGHT/LEFT	TAPPO TRAVERSA DX E SX	only refrigerated
21	095553	833R37202	1/3 SUPPORT +GUIDE ASSEMBLY	SUPPORTO TELAIO DX E SX CASS.1/3	
23	095267	832R23300	RIGHT SLIDING GUIDE	GUIDA SCORREVOLE DX	
24	095266	832R23200	LEFT SLIDING GUIDE	GUIDA SCORREVOLE SX	
25	095554	835R54203	FOAMED FRONT DRAW. 1/3 APX/ZAN	ASS.CASS.1/3 SCHIUMATO	brand Apx_Zan (+GASKET)
26	095822	835R54106	FOAMED FRONT DRAW. 1/2 ELUX	ASS.CASS.1/2 SCHIUMATO ELEC	brand: Elux (+GASKET)
27	095239	548R11701	GASKET DRAWER 1/2	GUARNIZ.CASS.1/2 TAV NGC H700	
28	095814	833R35904	1/2 DRAW+GUIDES (WITHOUT FRONTAL)	INVOLUCRO CON GUIDE	
29	095555	833R37302	1/2-2/3 SUPPORT +GUIDE ASSEMBLY	SUPP. TELAIO DX E SX CASS.1/2-2/3	
30	095556	835R54303	FOAMED FRONT DRAW. 1/2 APX_ZAN	ASS.CASS.1/2 SCHIUM. ZAN_APX	brand Apx_Zan (+GASKET)
31	095249	548R12500	GASKET DRAWER 2/3	GUARNIZ.CASS.2/3 TAV NGC H700	
32	095557	835R57702	2/3 FOAM. FRONT DRAW. ASS. ALPEN	ASS.CASS.2/3 SCHIUM. ZAN_APX	brand Apx_Zan (+GASKET)
33	095558	833R38500	2/3 DRAW+GUIDES (WITHOUT FRONTAL)	ASS. INVOLUCRO CASS.+GUIDE 2/3	
34	095559	835R57505	2/3 FOAM.FRONT DRAW. ASS. ELUX	ASS.CASS.2/3 SCHIUM. TAVOLO ELUX	brand: Elux (+GASKET)
*	095300		INCLUDE N°23 AND N°24 (1RIGHT +1 LEFT)	INCLUDE N°23 E 24,(1+1 GUIDA DX-SX)	
36		833R39800	1/2 STOR. HOLLOW DRAW. GUIDES	ASS. INVOLUCRO CASS.+GUIDE	hollow draw 1/2
37		833R40100	1/3 STOR. HOLLOW DRAW. GUIDES	ASS. INVOLUCRO CASS.+GUIDE	hollow draw 1/3



MODEL=H7NTN4R

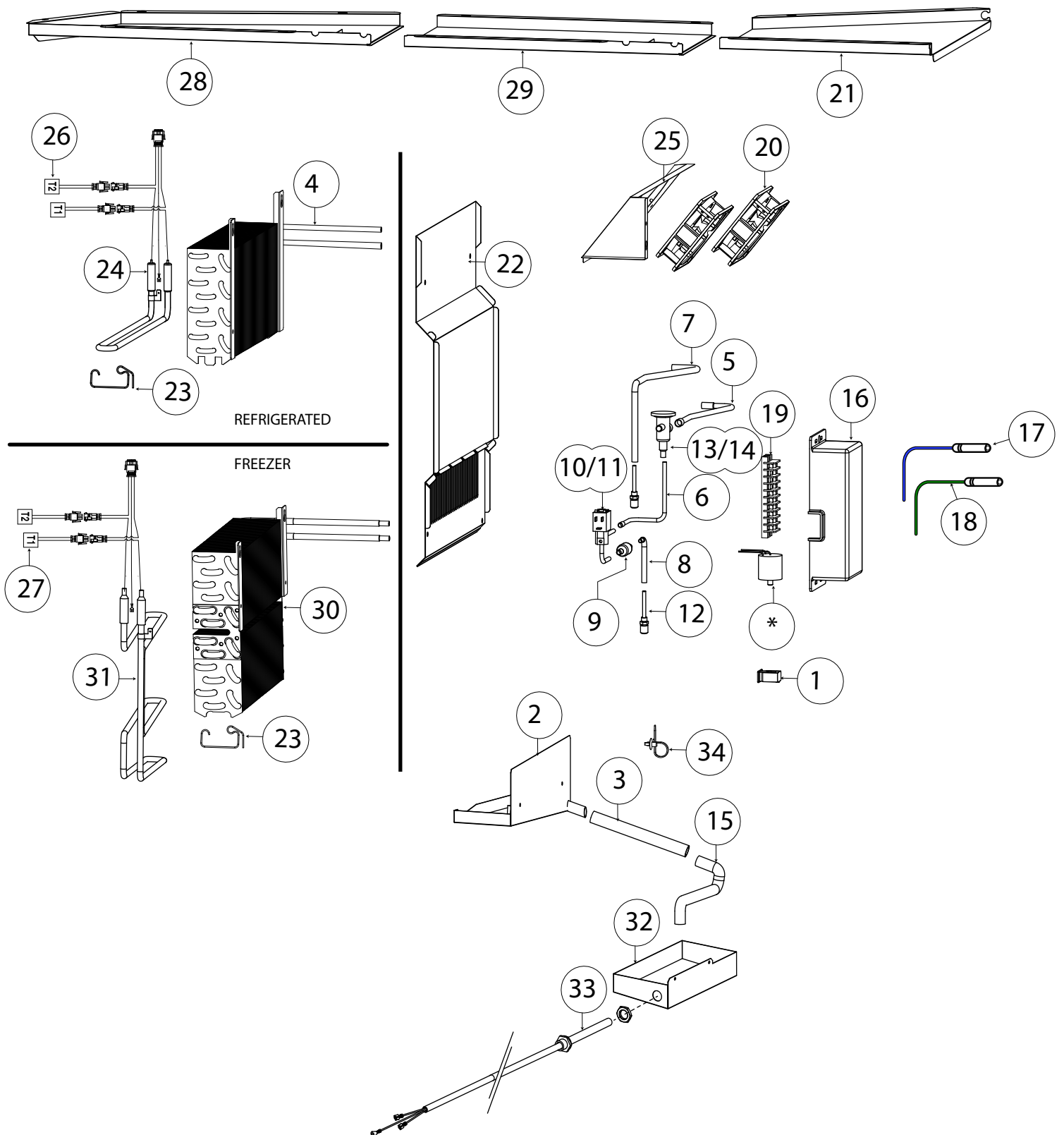


MODEL= H7NTN3R
H7NBT3R



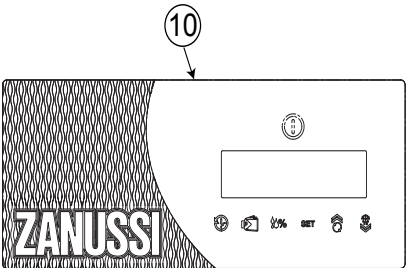
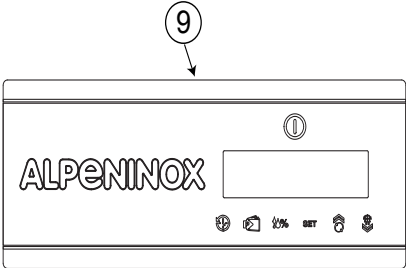
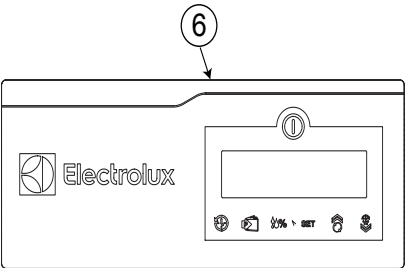
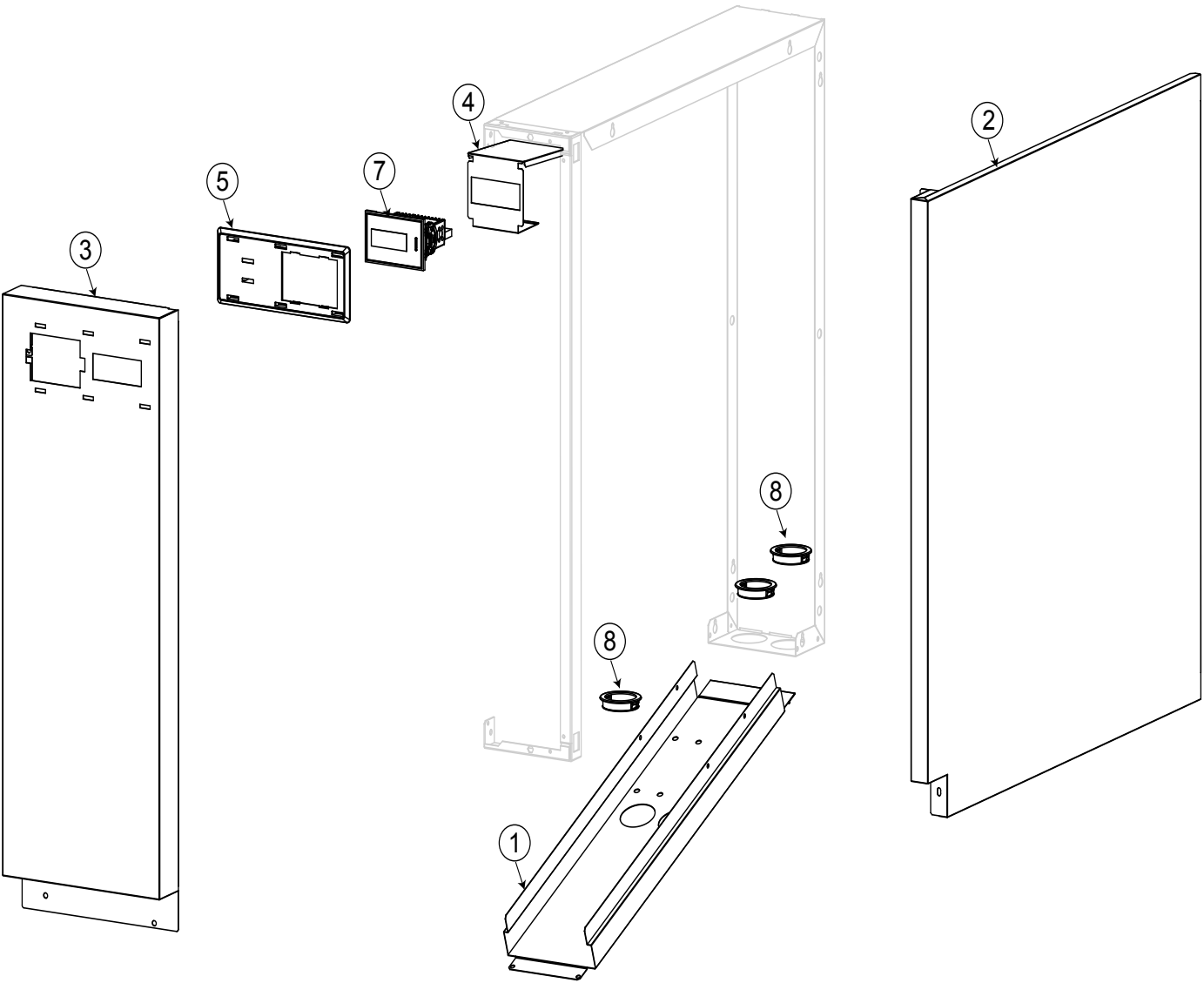
MODEL= H7NTN2R
H7NBT2R

HORIZONTAL COUNTERS				ECOSTORE HP 700	
Pos	Code	Factory code	Description	Descrizione	Ref/notes
Worktop			Piano di lavoro		
1		881R68100	WORKTOP MODULE 4C H50 "R"	TOP 4 VANI H 50 DX	c (wihtout S.back)
1		881R67001	WORKTOP MODULE 4C H50 "R-L"	TOP 4 VANI H 50 DX-SX	c (wihtout S.back)
2		501775700	HOOK FOR TOP	GANCIO PER RIPIANO	
3	095330	505R25301	BRACKET SHELF	STAFFA PER RIPIANO	
4		881R68000	WORKTOP MODULE 3C H50 "R"	TOP 3 VANI H 50 DX	b,e (wihtout S.back)
4		881R67201	WORKTOP MODULE 3C H50 "R-L"	TOP 3 VANI H 50 DX-SX	b,e (wihtout S.back)
5		881R67900	WORKTOP MODULE 2C H50 "R"	TOP 2 VANI H 50 DX	a,d (wihtout S.back)
5		881R67101	WORKTOP MODULE 2C H50 "R-L"	TOP 2 VANI H 50 DX-SX	a,d (wihtout S.back)
6	093186	505751500	HOOK FOR TOP ON THE COUNTER	FISSAGGIO RIPIANO AL TAVOLO	
7		881R67600	WORKTOP ASS. WITH 2C "R"	TOP CON ALZATINA 2 VANI DX	a,d (whit S.back)
7		881R67301	WORKTOP ASS. WITH 2C "R-L"	TOP CON ALZATINA 2 VANI DX-SX	a,d (whit S.back)
8		881R67700	WORKTOP ASSEMBLY 3C "R"	TOP CON ALZATINA 3 VANI DX	b,e (whit S.back)
8		881R67401	WORKTOP ASSEMBLY 3C "R-L"	TOP CON ALZATINA 3 VANI DX-SX	b,e (whit S.back)
9		881R67800	WORKTOP ASS. WITH 4C "R"	TOP CON ALZATINA 4 VANI DX	c (whit S.back)
9		881R67501	WORKTOP ASS. WITH 4C "R-L"	TOP CON ALZATINA 4 VANI DX-SX	c (whit S.back)
10					
11					
12					
13					
14					
15					
16					
17					
18					
19					
20					
21					
22					
23					
24					

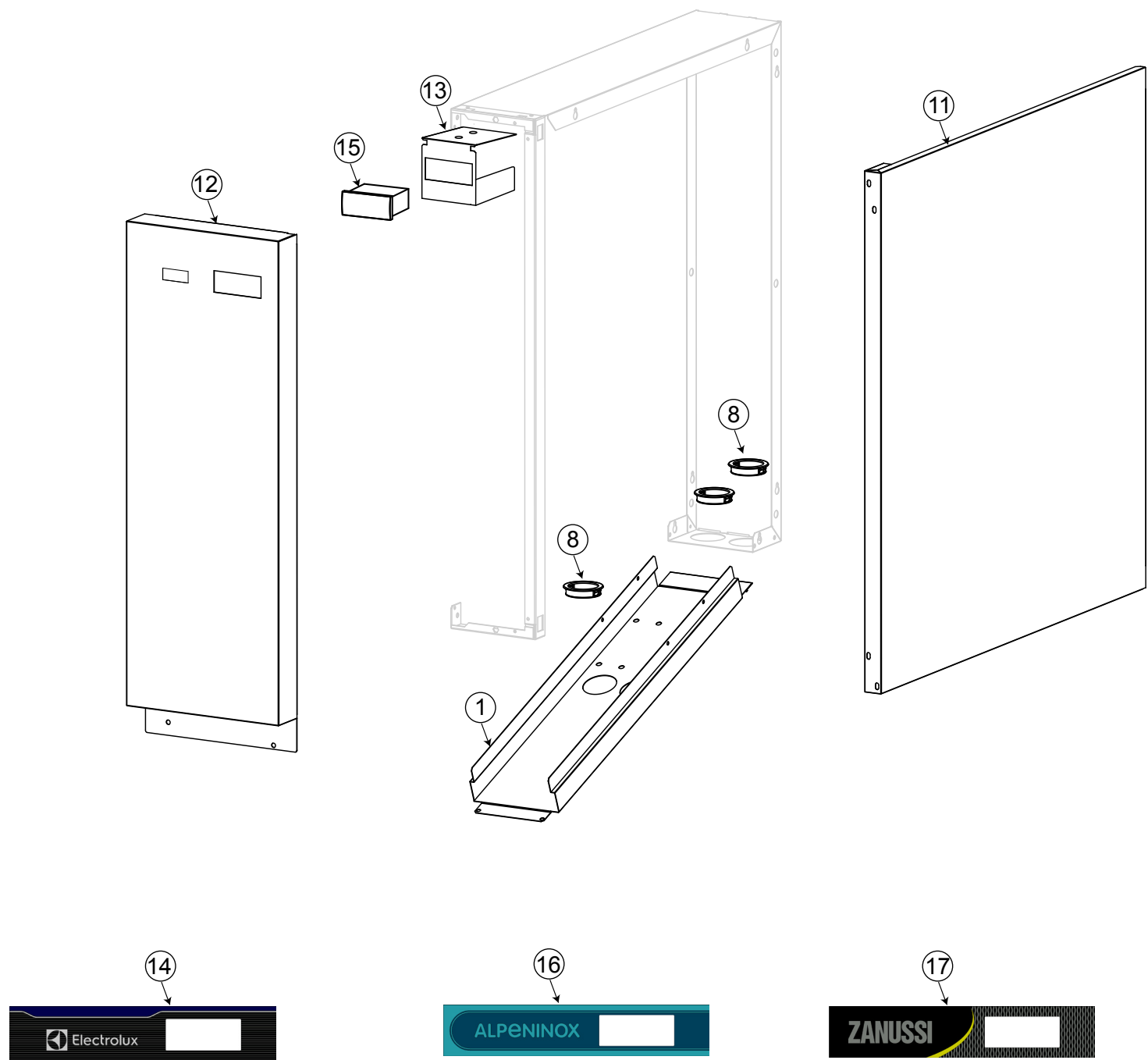


HORIZONTAL COUNTERS				ECOSTORE HP 700	
Pos	Code	Factory code	Description	Descrizione	Ref/notes
REMOTE Cooling unit 2-3-4 comp.				Gruppo REMOTO 2-3-4 vani	
1	094127	0639700500	CABLE STOPPER	FERMACAVO	
2	095350	0503R25901	WATER COLLECTOR BASIN "RIGHT"	BACINELLA EVAPORATORE	
3		0544R06400	EXTENSION PIPE WATER BASIN	TUBO SCARICO ACQUA EVAP BAC	
4	095450	0830R14500	EVAPORATOR REFRIGERATED	EVAPORAT. REMOTE H700 DESTRO	a,b,c
5		0515R34400	PIPE FROM TERM. VALVE TO EVAP.	TUBO DA TERM. A EVAPORATORE	a,b,c
5		0515R35100	PIPE FROM TERM. VALVE TO EVAP.	TUBO DA TERM. A EVAPORATORE	d,e
6		0515R34800	PIPE FROM TERM. VALVE TO S.NOID	TUBO DA TERM. A VALVOLA SOLEN.	
7		0515R34900	EVAPORATOR FLOW BACK PIPE	TUBO DI RITORNO EVAPORATORE	
8		0515R20000	INLET PIPE TO SOLENOID VALVE	TUBO INGRESSO VALVOLA SOLEN.	
9	090229	0525719000	MECHANICAL FILTER REFRIGERANT	FILTRO MECCANICO A RETINA	
10	087694	0646735000	BODY SOLENOID VALVE	CORPO VALV.SOLENOIDE	
11	085847	0646729100	COIL WITHOUT CONNECTION	BOBINA PARKER	Up to 2020/26
11	095063	0646R14000	COIL WITHOUT CONNECTION	BOBINA PARKER	From 2020/27
12	0A8171	0A02021800	SCHRADEN 4.00.10/2 RECHARGE.	VALVOLA DI RICARICA	
13	087333	0646740901	THERMOSTATIC VALVE REFRIG.	VALVOLA TERMOSTATICA	a,b,c HP refrigerato R134a
13	088501	0646751900	THERMOSTATIC VALVE REFRIG.	VALVOLA TERMOSTATICA	a,b,c HP refrigerato R404A,R452A,R407F,R422A
13	095674	0646R16000	THERMOSTATIC VALVE TREFRIG.	VALVOLA TERMOSTATICA	a,b,c HP refrigerato R448A,R449A,R407C,R407A
13	087334	0646741000	THERMOSTATIC VALVE FREEZER	VALVOLA TERMOSTATICA	d,e CL_HP freezer R407C,R448A,R449A
13		0652F00000	THERMOSTATIC VALVE FREEZER	VALVOLA TERMOSTATICA	d,e CL_HP freezer R407A
13	087334	0646741000	THERMOSTATIC VALVE FREEZER	VALVOLA TERMOSTATICA	d,e CL_HP freezer R404a, R452a
14	089614	0565717600	INSULATION VALVE	ISOLANTE X VALVOLA TERMOST	
15	095457	0544R07200	PIPE SIPHON	SIFONE SCARICO ACQUA DX	
16		0549727400	ELECTRICAL BOX	SCATOLA PROTEZIONE IMP. ELET	
17	092175	0646R06900	NTC PROBE 6X20 BLU 'CELL' L=3000	SONDA CELLA BLU	
18	096125	0646R07701	NTC PROBE 6X40 VERDE 'DEF' L=3000	SONDA EVAPORATORE VERDE	
19		0856R28800	WIRING/TERMINAL BOARD ASSEMBLY	MORSETTIERA CON CABLAGGIO	
19		0856R30500	WIRING/TERMINAL BOARD ASSEMBLY	MORSETTIERA CON CABLAGGIO	
20	095315	0682R10700	AXIAL AC FAN	VENTILATORE CELLA	
21		0503R39100	COMMON PART AIR CONVEYOR	CONVOGLIATORE ARIA COMUNE	a,b,c AISI 430
21		0503R39000	COMMON PART AIR CONVEYOR	CONVOGLIATORE ARIA COMUNE	d,e AISI 304
22	095278	0503R25800	EVAPORATOR COVER H700 "RIGHT"	PROTEZIONE EVAPORATORE	a,b,c
22	095317	0503R26701	EVAPORATOR COVER H700 "RIGHT"	PROTEZIONE EVAPORATORE	d,e
23	095279	0514R24201	SPRING FOR RETAINING HEATER	MOLLA F IX. RESISTENZA TAV NGC TN	a,b,c
24	095434	0856R28600	ARMoured HEATING ASS.THERMO	RESISTENZA CORAZZATA	a,b,c
25	095351	0503R25701	FAN SUPPORT EVAPORATOR HP	SUPPORTO VENTILATORE CELLA	
26	095431	0856R29400	DEFROST THERMOSTAT TN 20°C	TERMOSTATI DI SICUREZZA 20°C	a,b,c
27	095432	0856R29500	DEFROST THERMOSTAT BT	TERMOSTATI DI SICUREZZA 8°C	d,e
28		0503R39300	END PART AIR CONVEYOR	PARTE FINALE CONV. ARIA	b,c
29		0503R39200	MID PART AIR CONVEYOR "R" TN	PARTE CENTRALE CONV.ARIA	c
30	095451	0830R14600	EVAPORATOR FREEZER	EVAPORATORE CONGELATORE	d,e
31	095435	0856R28700	ARMORED HEATING WITH CONNEC	RESISTENZA CON TERMOSTATI	d,e
32	091356	0512701800	EVAPORATION BASIN	BACCINELLA DI EVAP. CONDENSA	
33	083814	617R03800	PTC EXTERNAL	PTC	
34	082118	0639700800	CLIPS	CLIPS	

Range HP freezer & refrigerator



Range CL freezer



HORIZONTAL COUNTERS				ECOSTORE HP 700	
Pos	Code	Factory code	Description	Descrizione	Ref/notes
Control panel				Pannello di controllo	
1		503R58700	TRAY SUPPORT REMOTE MODEL	SUPPORTO BACINELLA	A304
2	095232	503R25000	EXTERNAL SIDE PANEL H700 RIGHT	PANNELLO ESTERNO DX	All HP refrig.& freezer
3		509R21400	CONTROL PANEL "R" REM. VERS. HP	CRUSCOTTO SENZA COMPONENTI	All HP refrig.& freezer
4		503R49700	IR34 COVER (REMOTE) VERS. HP	PROTEZIONE TERMOREGOLATORE	All HP refrig.& freezer
5		546R40900	FRAME DIGITAL CONT. REM. MODELS	CORNICE TERMOREGOLATORE	
6	095439	755R12102	MEMB.COUNTERS HP REM ELUX TN	MEM CON TASTI X TERM. "R" ELUX	ELUX a,b,c
6	095445	755R12702	MEMB.COUNTERS HP REM ELUX BT	MEM CON TASTI X TERM. "R" ELUX	ELUX c,d,e
7	093437	646R10602	DIGITAL CONTROL	TERMOREGOLATORE IUEL10140 IR33	
8		639710400	FAIRLEAD	PASSACAVO SB1750/22	
9	095441	755R12300	MEMB.COUNTERS HP REM APX R TN	MEM CON TASTI X TERM. "R" APX	APX a,b,c
9	095447	755R12900	MEMB.COUNTERS HP REM APX R BT	MEM CON TASTI X TERM. "R" APX	APX c,d,e
10	095440	755R12200	MEMB.COUNTERS HP REM ZAN R TN	MEM CON TASTI X TERM. "R" ZAN	ZAN a,b,c
10	095446	755R12800	MEMB.COUNTERS HP REM ZAN R BT	MEM CON TASTI X TERM. "R" ZANzz	ZAN c,d,e
11		503R62601	EXTERNAL SIDE PANEL H700 RIGHT	PANNELLO ESTERNO DX	d,e Freezer CL
12		509R23800	CONTROL PANEL "R" REM. VERS.CL	CRUSCOTTO SENZA COMPONENTI	d,e Freezer CL
13		503R49700	IR34 COVER (REMOTE) CL VERS.	PROTEZIONE TERMOREGOLATORE	d,e Freezer CL
14		755R15500	MEMB.COUNTERS CL REM ELUX BT	MEM CON TASTI X TERM. "R" ELUX	d,e Freezer CL
15	093434	646R11101	TERMOREGOLAT. IR33 IMEL1J0559	CONTROLLORE IR33	d,e Freezer CL - Up to 2023/16 order KIT 097750, see TB VTX2023_08
15	097579	855R18401	TERMOREGOLAT. IJF SMALL	CONTROLLORE IJF SMALL	d,e Freezer CL - From 2023/17
16		755R15400	MEMB.COUNTERS CL REM APX R BT	MEM CON TASTI X TERM. "R" APX	d,e Freezer CL
17		755R15600	MEMB.COUNTERS CL REM ZAN R BT	MEM CON TASTI X TERM. "R" ZAN	d,e Freezer CL
18					
19					
20					
21					
22					
23					
24					