

Spareparts Catalogue

Reservdelskatalog

PW9C

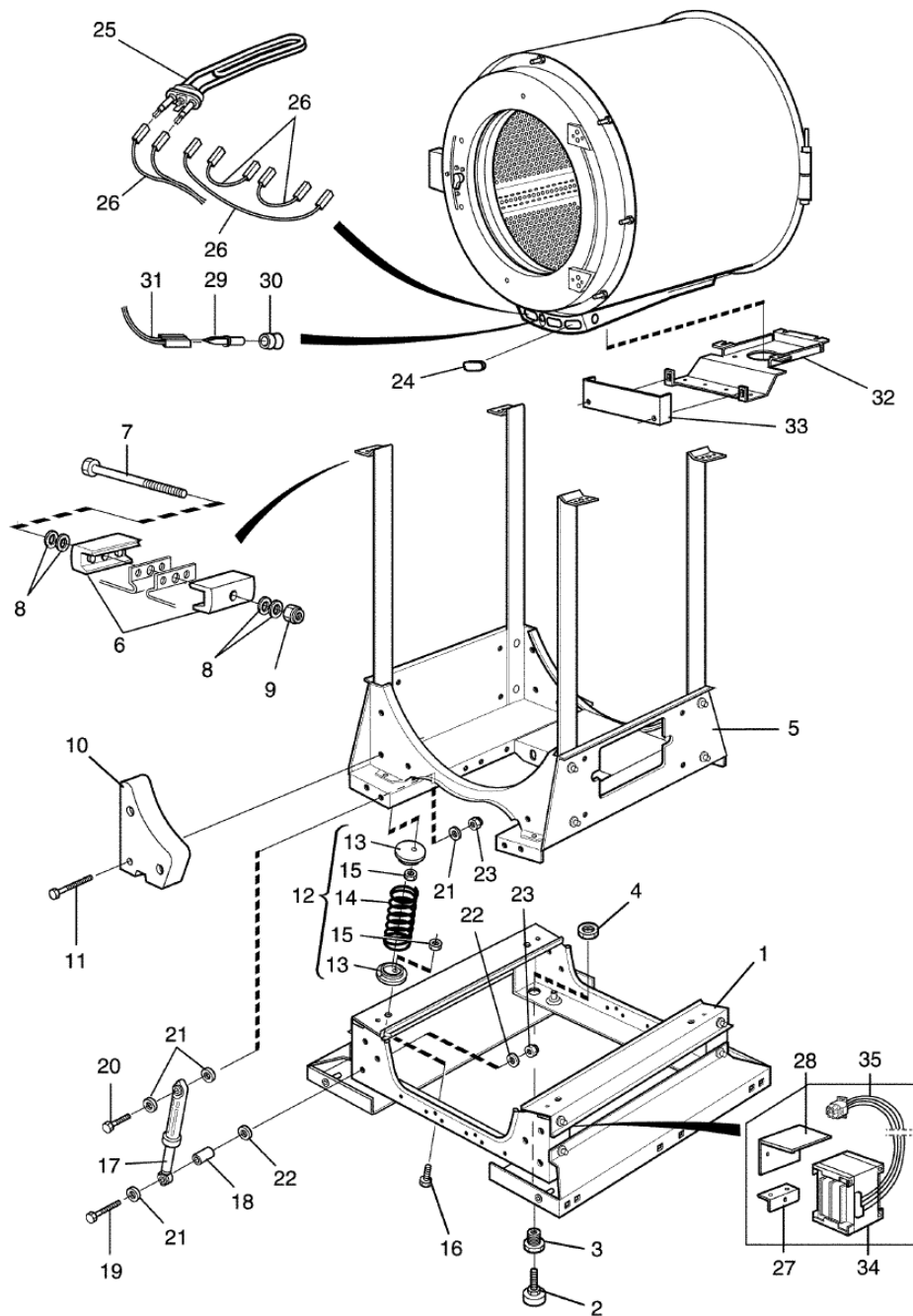


PW9C

Illustration	Page	Table of content
500331	6	Base and outer drum
500332	10	Lining and top panel
500329	12	Drum, rear gable
500330	14	Door and hinged joint
500489	16	Door lock
500333	18	Motor
500334	20	Motor control unit EWD
500764	22	Motor control unit Obiwan
500373	24	Control panel
500231	26	CPU
500582	28	Cables
500237	30	Program selector
500404	32	Electric components connection
500335	36	Drain valve and hoses
500328	40	Detergent container
500294	42	Drain valve, electrical
500452	44	Coinbox housing (for coinbox height 70mm)
500453	46	Coinbox housing (for coinbox height 90mm)
500199	48	Electronic coin meter
500201	50	Coin meter
500446	52	Coin meter (for coinbox height 90mm)
500544	54	Electronic coin meter (for coinbox height 90mm)

PW9C

Table of content	Innehållsförteckning	Page/Sida
Base and outer drum	Stativ och yttertrumma	6
Lining and top panel	Klädselplåtar och topplock	10
Drum, rear gable	Trumma, bakgavel	12
Door and hinged joint	Lucka och gångled	14
Door lock	Lucklås	16
Motor	Motor	18
Motor control unit EWD	Motorstyrningsenhet EWD	20
Motor control unit Obiwan	Motorstyrningsenhet Obiwan	22
Control panel	Manöverpanel	24
CPU	CPU	26
Cables	Kablage	28
Program selector	Programväljare	30
Electric components connection	Eldetaljer anslutning	32
Drain valve and hoses	Avloppsventil och slangar	36
Detergent container	Tvättmedelsbehållare	40
Drain valve, electrical	Avloppsventil, elektrisk	42
Coinbox housing (for coinbox height 70mm)	Mynthus (för myntlåda höjd 70mm)	44
Coinbox housing (for coinbox height 90mm)	Mynthus (för myntlåda höjd 90mm)	46
Electronic coin meter	Elektronisk myntmätare	48
Coin meter	Myntmätare	50
Coin meter (for coinbox height 90mm)	Myntmätare (för myntlåda höjd 90mm)	52
Electronic coin meter (for coinbox height - 90mm)	Elektronisk myntmätare (för myntlåda höjd - 90mm)	54



500331_01

PW9C
Base and outer drum
Stativ och yttertrumma

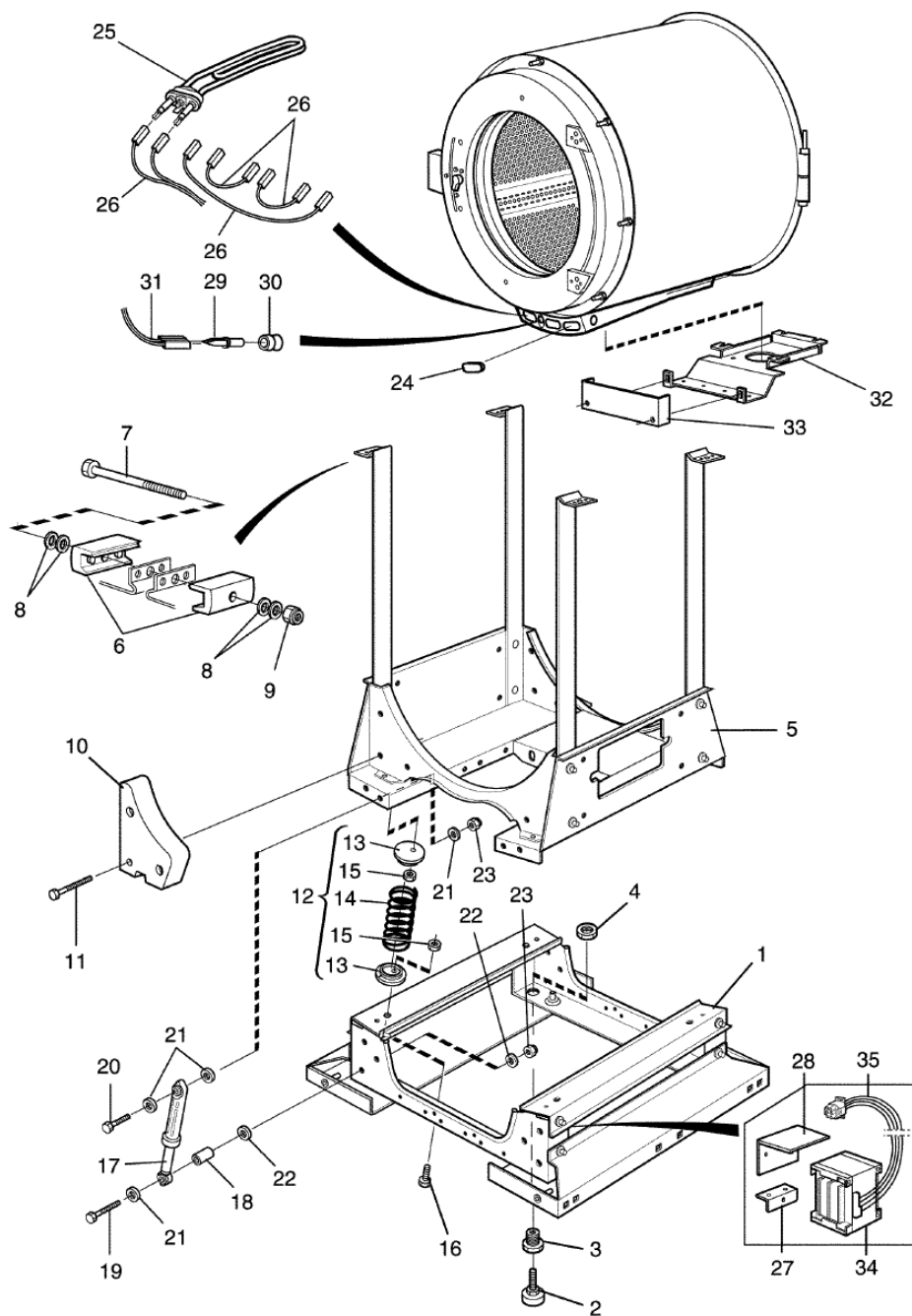
Illustration
Illustration
500331/0

Issue
Utgåva
1

Month
Månad
4

2013

Pos	Qty	Part.no	Description	Beskrivning	Notes
1	1	432121102	Frame	Stativ	Lower
2	4	438816001	• Foot	• Fot	M10
3	4	432145801	• Bushing	• Bussning	M10
5	1	432121204	Frame	Stativ	Upper
6	4	432145301	• Tensioner	• Spänne	
7	2	725246571	• Screw	• Skruv	M8X70
8	8	471780702	• Tension plate	• Spännbricka	18x8,4x2
9	2	732211801	• Locking nut	• Låsmutter	M8
10	2	432120601	• Counterweight	• Motvikt	
11	6	471832807	• Screw	• Skruv	M8X65
12	1	472991302	Suspension	Fjäderenhhet	Kit
13	8	*	• Spring retainer	• Fjäderfäste	
14	4	*	• Spring	• Fjäder	
15	8	*	• Nut	• Mutter	
16	8	471832806	Screw	Skruv	
17	1	472991308	Shock absorber	Stötdämpare	Kit, 4 pcs
18	4	471855503	Bushing	Bussning	
19	4	725246451	Screw	Skruv	M8X65
20	4	725246151	Screw	Skruv	M8X50
21	12	471850234	Washer	Bricka	8,4x24x2
22	8	432133701	Bracket	Fäste	
23	8	732211801	Locking nut	Låsmutter	M8
24	Rq	471982199	Plug	Propp	
25	3	471983705	Heating element	Element	1,8kW 240V
25	3	471983741	Heating element	Element	Japan 1.8kW 200V
26	1	413295002	Cable set	Ledningssats	400/230V
27	1	432133701	Bracket	Fäste	
28	1	432133801	Cover	Skydd	
29	1	472991322	Sensor	Givare	Complete
30	1	471819201	• Bushing	• Bussning	

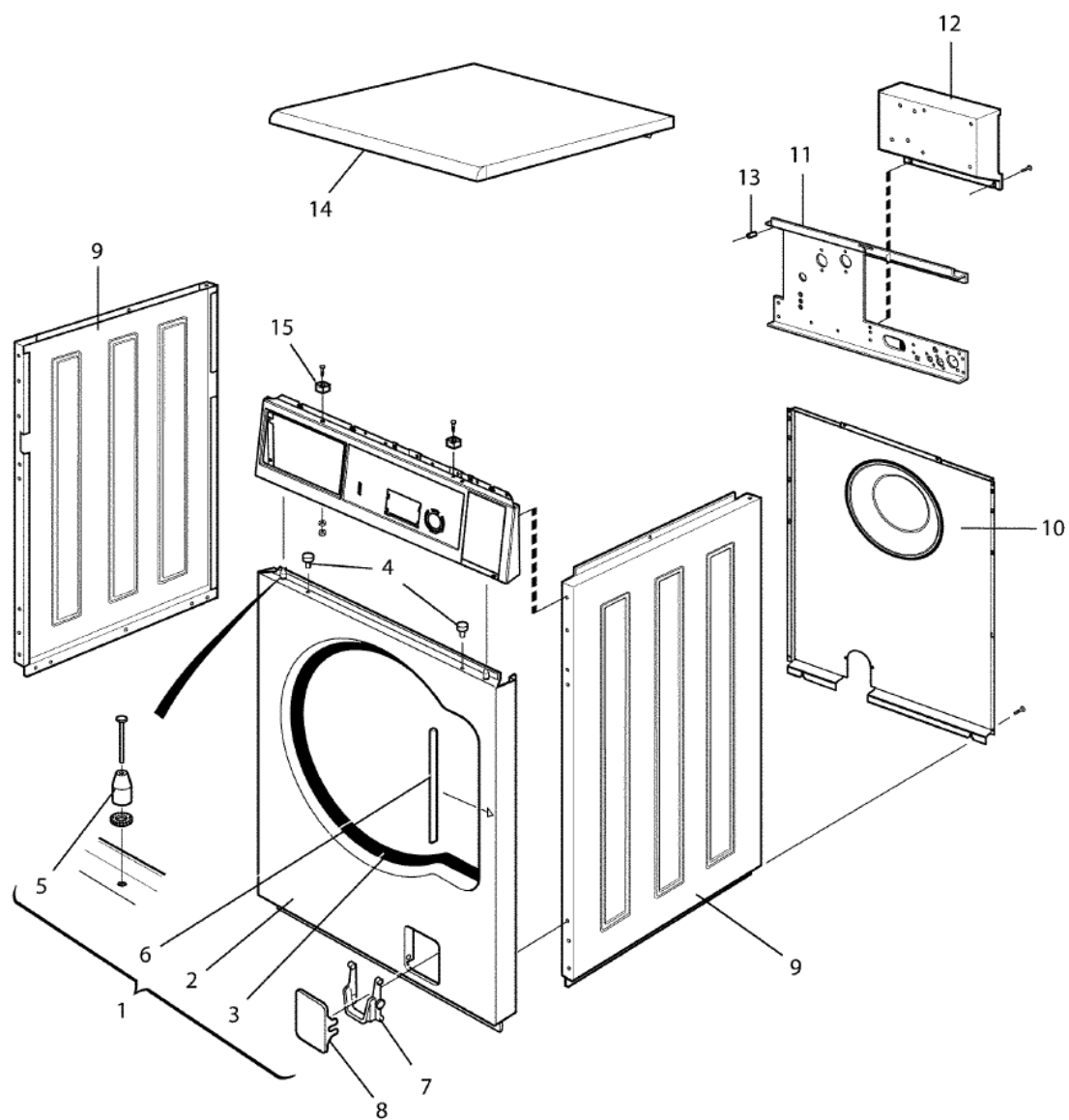


500331_01

PW9C
Base and outer drum
Stativ och yttertrumma

Illustration	Issue	Month	
Illustration	Utgåva	Månad	
500331/0	1	4	2013

Pos	Qty	Part.no	Description	Beskrivning	Notes
31	1	432319290	Cable set	Ledningssats	
32	1	432253402	Clamp	Bygel	
33	1	432638201	Cover	Skydd	
34	1	471955054	Transformer	Transformator	200V 200V
34	1	471955059	Transformer	Transformator	356V,380V,415V,440V- ,480V
35	1	432298501	Cable set	Ledningssats	200V



500332_01

PW9C**Lining and top panel****Klädselplåtar och topplock**

Illustration

Illustration

500332/0

Issue

Utgåva

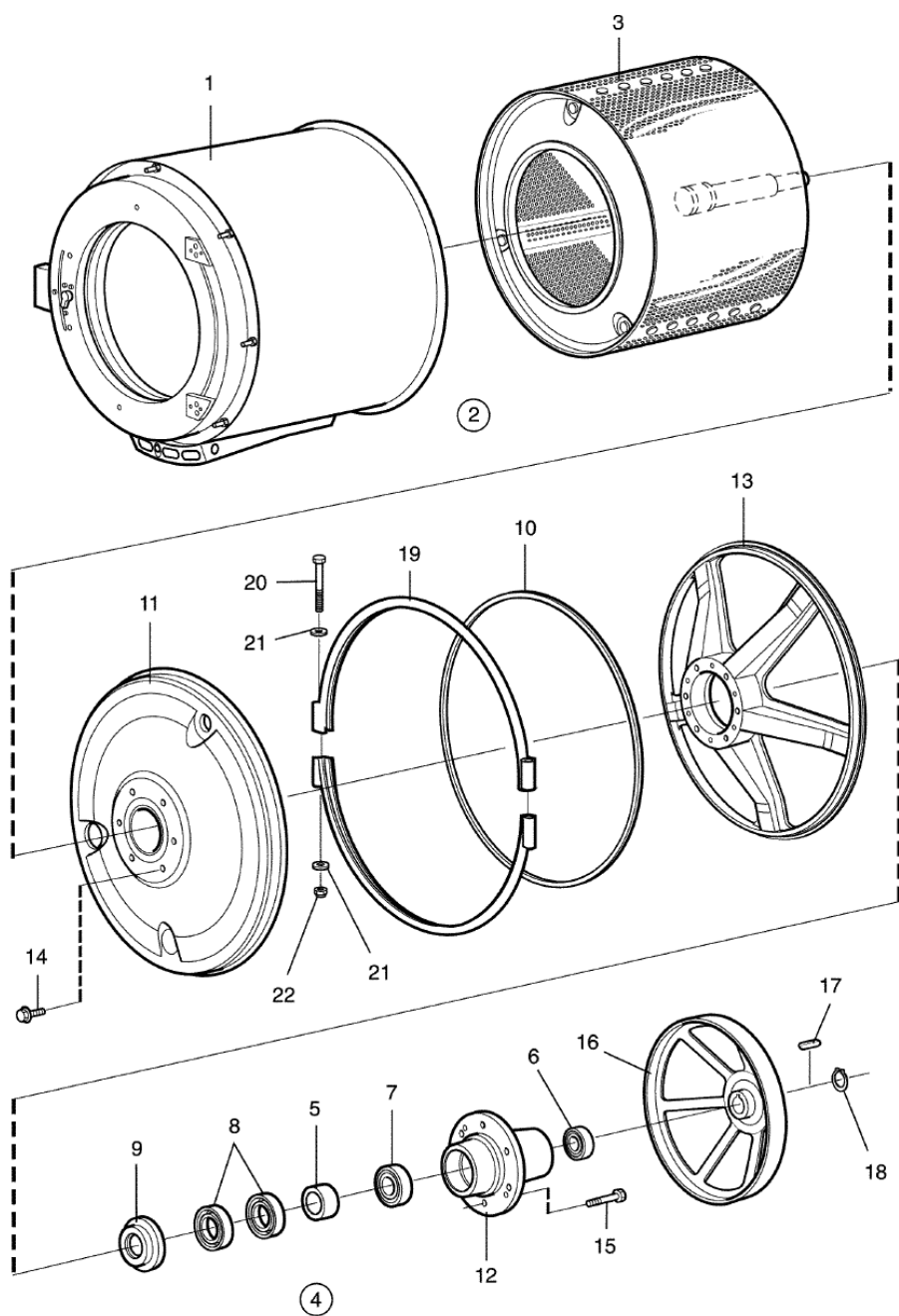
1

Month

Månad

4**2013**

Pos	Qty	Part.no	Description	Beskrivning	Notes
1	1	472995128	Front panel	Frontplåt	Pump White
1	1	472995121	Front panel	Frontplåt	White
2	1	432200020	• Front panel	• Frontplåt	Pump White
2	1	432200003	• Front panel	• Frontplåt	White
3	1	432216411	• Strip	• List	
4	2	471819601	• Plug	• Plugg	
5	2	438510902	• Guide pin	• Styrpinne	
6	1	471467267	• Protection	• Skydd	
7	1	438511401	Hinged joint	Gångled	
8	1	438508112	Door	Lucka	White
9	2	432205702	Side panel	Sidoplåt	White
10	1	413500601	Rear panel	Bakstycke	
11	1	432224604	Brace bracket	Stagplåt	
12	1	432221501	Plate	Plåt	
13	2	432218001	Spacer	Distans	
14	1	472995209	Top panel	Topplock	
15	2	432227301	Guide	Styrning	



500329_01

PW9C
Drum, rear gable
Trumma,bakgavel

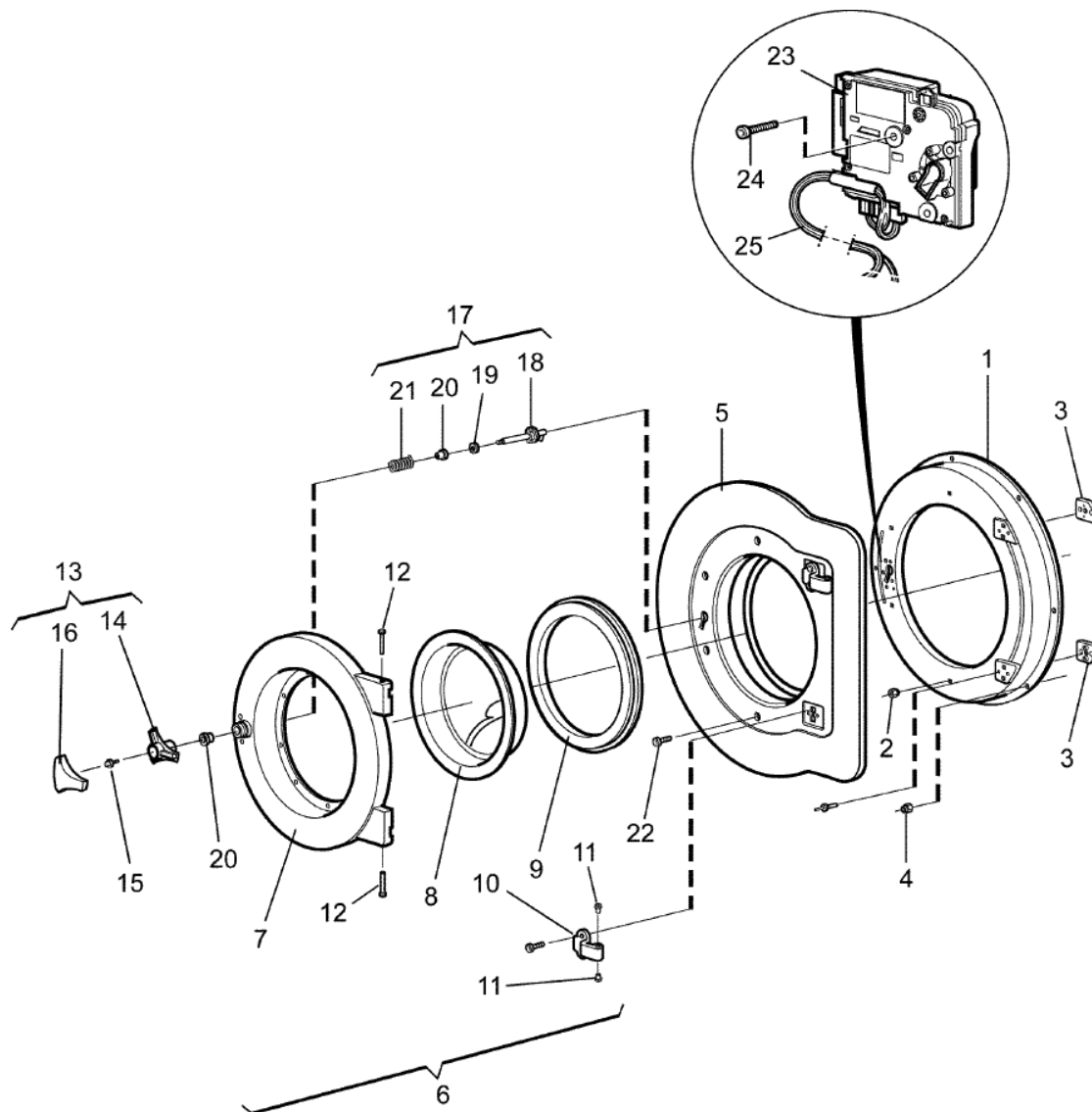
Illustration
Illustration
500329/0

Issue
Utgåva
1

Month
Månad
4

2013

Pos	Qty	Part.no	Description	Beskrivning	Notes
1	1	432157011	Outer drum	Yttertrumma	Non-heated
1	1	432157012	Outer drum	Yttertrumma	El/Dual heating
1	1	432157013	Outer drum	Yttertrumma	Steam
2	1	432160521	Rear gable	Bakgavel	Complete
3	1	432150011	• Inner drum	• Innertrumma	
4	1	472991312	• Repair kit	• Renoveringssats	
5	1	*	•• Bushing	•• Bussning	
6	1	*	•• Ball bearing	•• Kullager	
7	1	*	•• Ball bearing	•• Kullager	
8	2	*	•• Sealing ring	•• Tätningsring	
9	1	*	•• Sealing ring	•• Tätningsring	
10	1	438815501	•• Seal	•• Tätning	
11	1	432154501	• Lining	• Klädselplåt	
12	1	432156001	• Bearing housing	• Lagerhus	
13	1	432154001	• End piece	• Gavel	
14	6	471832301	• Screw	• Skruv	M6X12
15	6	471832802	• Screw	• Skruv	M12X50
16	1	432155001	• Pulley	• Remskiva	
17	1	735937001	• Key	• Kil	CNY
18	1	735313300	• C-clamp	• Spårring	SGA35
19	2	432156501	Tension strap	Spännband	
20	2	471922259	Screw	Skruv	M8X140
21	4	471850214	Washer	Bricka	8.4X20X2
22	2	732211801	Locking nut	Låsmutter	M8



500330_02

PW9C
Door and hinged joint
Lucka och gångled

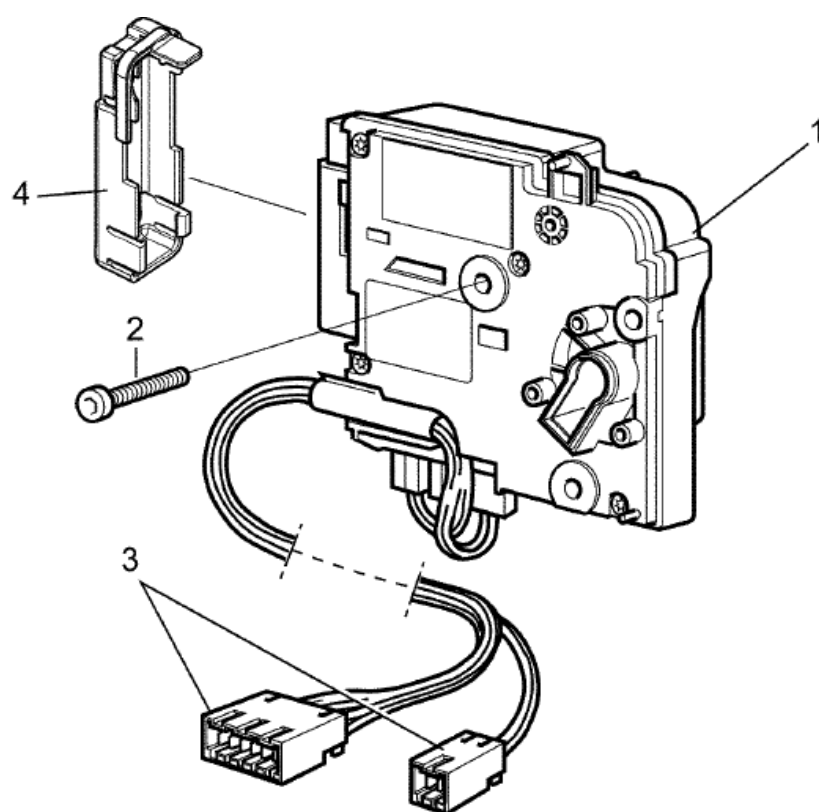
Illustration
Illustration
500330/0

Issue
Utgåva
5

Month
Månad
12

2020

Pos	Qty	Part.no	Description	Beskrivning	Notes
1	1	432187001	Support frame	Fästplatta	
2	4	*	• Nut	• Mutter	M6
3	2	432195101	• Bracket	• Fäste	
4	9	471840402	Locking nut	Låsmutter	M6
5	1	432188502	Trim panel	Dekorplåt	Blue
6	1	472995305	Door	Lucka	Complete
7	1	*	• Door	• Lucka	
8	1	432185501	• Door glass	• Luckglas	
9	1	432184005	• Door gasket	• Luckpackning	Silicone Black
10	2	432195002	• Hinged joint	• Gångled	
11	4	438406201	• Bushing	• Bussning	
12	2	432633401	• Pin	• Tapp	
13	1	472992005	• Knob	• Vred	Complete
14	1	432227602	•• Knob	•• Vred	
15	1	725236661	•• Screw	•• Skruv	M6SF 6X12
16	1	432227003	•• Knob	•• Vred	
17	1	472991301	• Kit, lock shaft	• Kit, låsaxel	
18	1	*	•• Lock shaft	•• Låsaxel	
19	1	*	•• Washer	•• Bricka	
20	2	*	•• Bushing	•• Bussning	
21	1	*	•• Torsion spring	•• Vridfjäder	
22	4	471834436	Screw	Skruv	
23	1	438956101	Door locking device	Lucklås	Complete
24	3	471834247	Screw	Skruv	M6X25
25	1	432290526	Cable set	Ledningssats	



500489_01

PW9C
Door lock
Lucklås

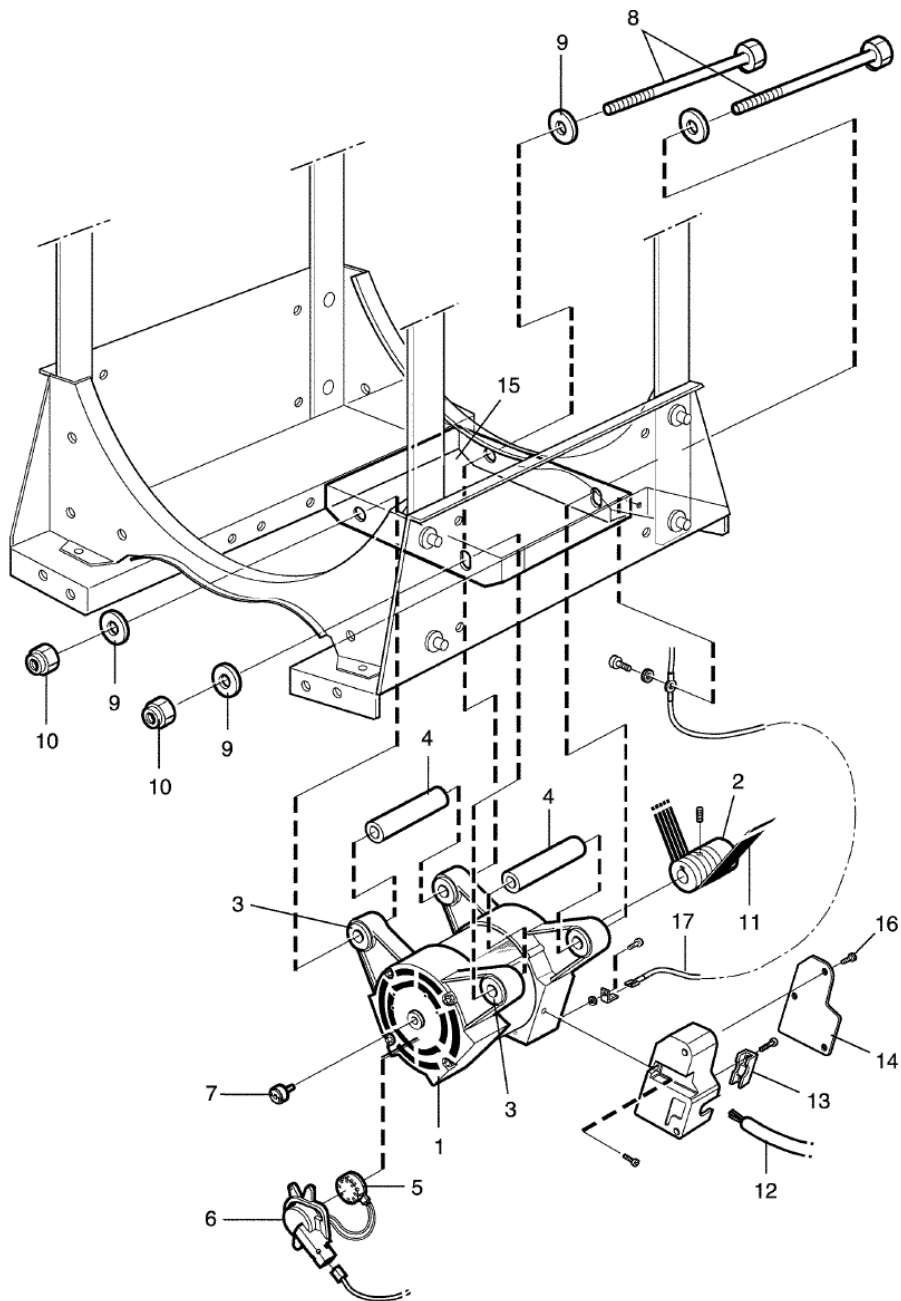
Illustration
Illustration
500489/0

Issue
Utgåva
1

Month
Månad
4

2013

Pos	Qty	Part.no	Description	Beskrivning	Notes
1	1	438956101	Door locking device	Lucklås	Complete
2	3	471834247	Screw	Skruv	M6X25
3	1	432290527	Cable set	Ledningssats	Door
4	1	432198201	Cover	Skydd	



500333_01

**PW9C
Motor
Motor**

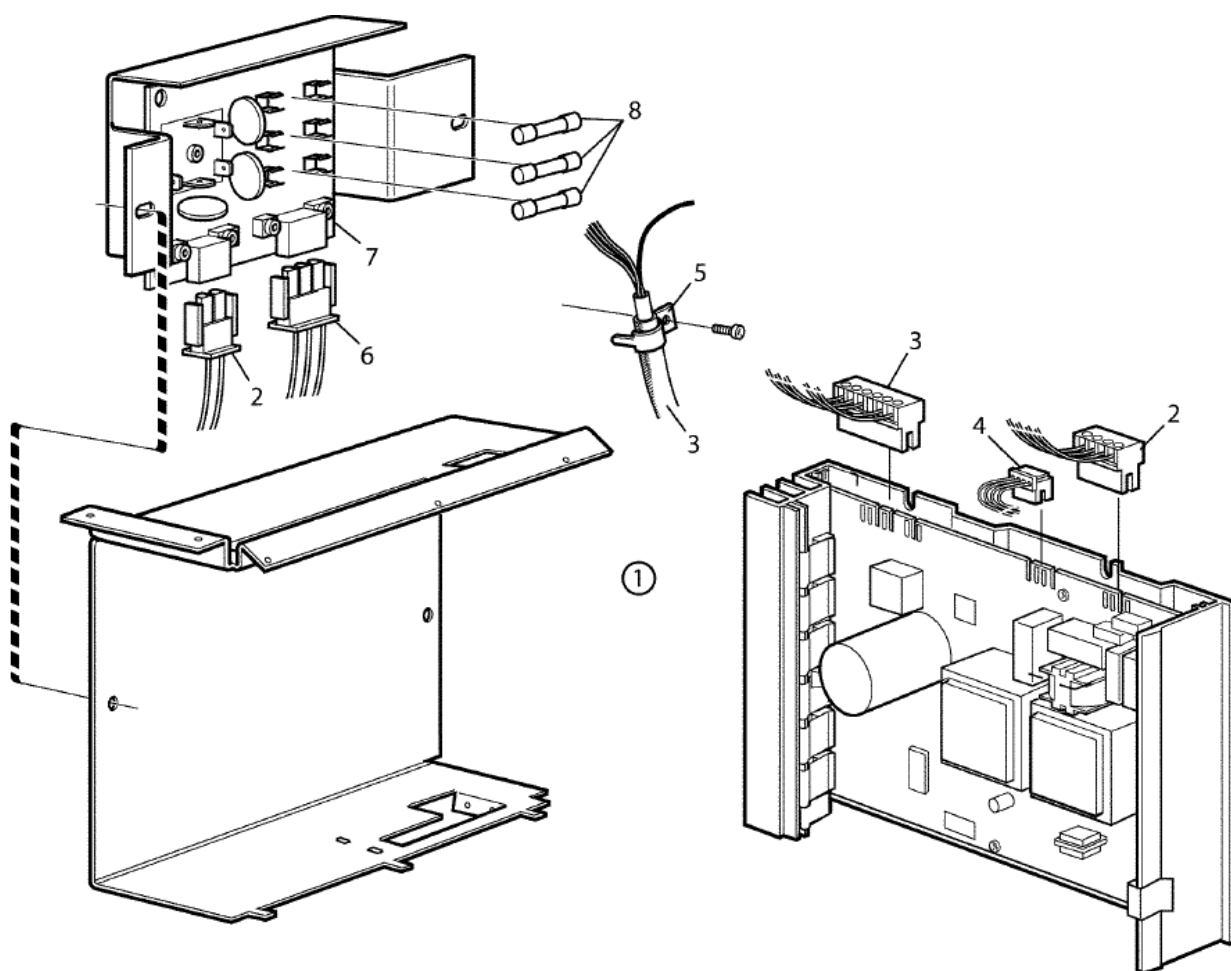
Illustration
Illustration
500333/0

Issue
Utgåva
4

Month
Månad
3

2019

Pos	Qty	Part.no	Description	Beskrivning	Notes
1	1	413970161	Motor	Motor	
2	1	*	• Pulley	• Remskiva	
3	4	438817201	• Rubber bushing	• Gummibussning	
4	2	438512405	• Pipe	• Rör	
5	1	471882601	• Tacho sensor	• Tachogivare	
6	1	432122901	• Cover	• Kåpa	
7	1	471882701	• Magnet	• Magnet	
8	2	471835614	Screw	Skruv	M8x190
9	4	471850214	Washer	Bricka	8.4X20X2
10	2	732211801	Locking nut	Låsmutter	M8
11	1	471771113	Ribbed belt	Poly-V-rem	
12	1	413299010	Cable set	Ledningssats	EWD -522/484809
12	1	413299012	Cable set	Ledningssats	Obiwan 522/484810-
13	1	438979902	Clamp	Klämma	
14	1	438979903	Cover	Lock	
15	1	413120101	Motor mounting plate	Motorbrygga	
16	3	471834213	Screw	Skruv	MRT-TT 4X10
17	1	432298301	Cable set	Ledningssats	



500334_01

PW9C**Motor control unit EWD****Motorstyrningsenhet EWD****-522/484809**

Illustration

Illustration

500334/0

Issue

Utgåva

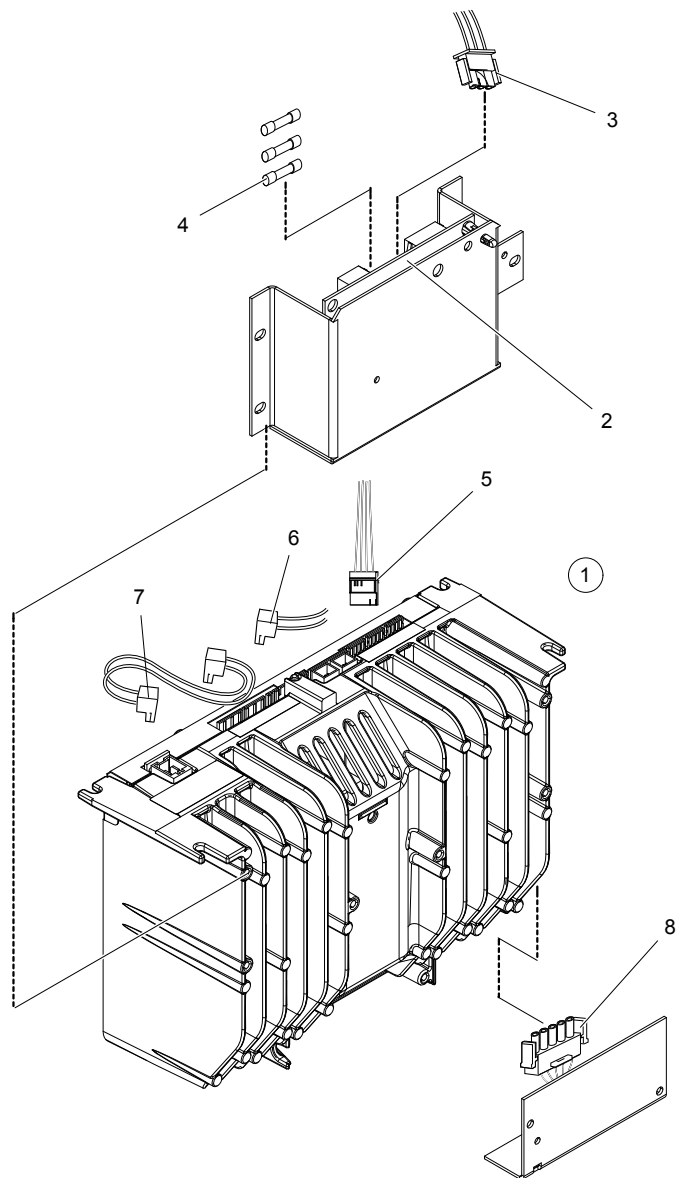
2

Month

Månad

3**2019**

Pos	Qty	Part.no	Description	Beskrivning	Notes
1	1	472992907	Motor control unit	Motorstyrningsenhet	Complete
2	1	413291901	• Cable set	• Ledningssats	
2	1	413291903	• Cable set	• Ledningssats	Japan
3	1	*	Cable set	Ledningssats	See motor
4	1	413327424	Cable set	Ledningssats	M-COM
5	1	438523301	Clamp	Bygel	
6	1	432296101	Cable set	Ledningssats	3AC
7	1	438877402	Printed circuit board	Kretskort	Japan
8	3	471876802	Fuse	Säkring	15A



500764_01

PW9C**Motor control unit Obiwan****Motorstyrningsenhet Obiwan****522/484810-**

Illustration

Illustration
500764/1

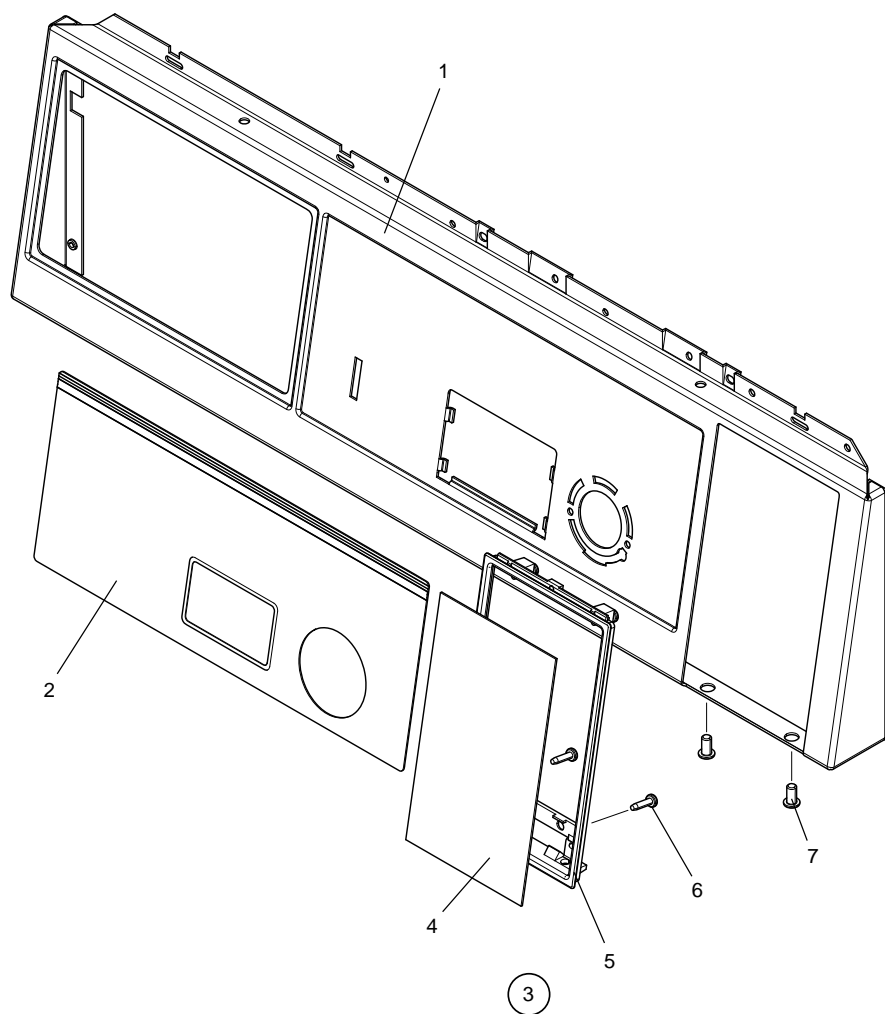
Issue

Utgåva
1

Month

Månad
2**2019**

Pos	Qty	Part.no	Description	Beskrivning	Notes
1	1	472994604	Motor control unit Obiwan	Motorstyrningsenhet Obiwan	Kit
2	1	438877402	• Printed circuit board	• Kretskort	Japan Japan
3	1	432296101	• Cable set	• Ledningssats	Japan 3AC
4	1	471876802	• Fuse	• Säkring	Japan 15A
5	1	413327610	• Cable set	• Ledningssats	M-COM
6	1	413291901	• Cable set	• Ledningssats	P-bus - X302
6	1	413291903	• Cable set	• Ledningssats	Japan
7	1	413318425	• Cable set	• Ledningssats	
8	1	*	• Cable set	• Ledningssats	See motor M-COM



500373_02

PW9C
Control panel
Manöverpanel

Illustration	Issue	Month	
Illustration	Utgåva	Månad	
500373/2	2	2	2021

Pos	Qty	Part.no	Description	Beskrivning	Notes
1	1	432236901	Front panel	Frontpanel	
2	1	432275310	Panel sign	Panelskylt	
3	1	472995508	Cover plates	Täckplåtar	Kit
4	1	*	• <i>Cover plate</i>	• <i>Täckplåt</i>	
5	1	*	• <i>Frame</i>	• <i>Ram</i>	
6	4	*	• <i>Screw</i>	• <i>Skruv</i>	
7	2	*	• <i>Screw</i>	• <i>Skruv</i>	

PW9C
CPU
CPU

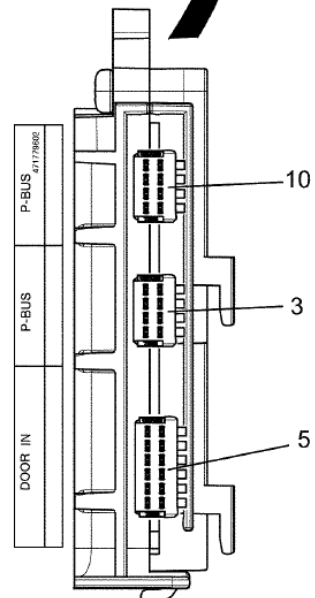
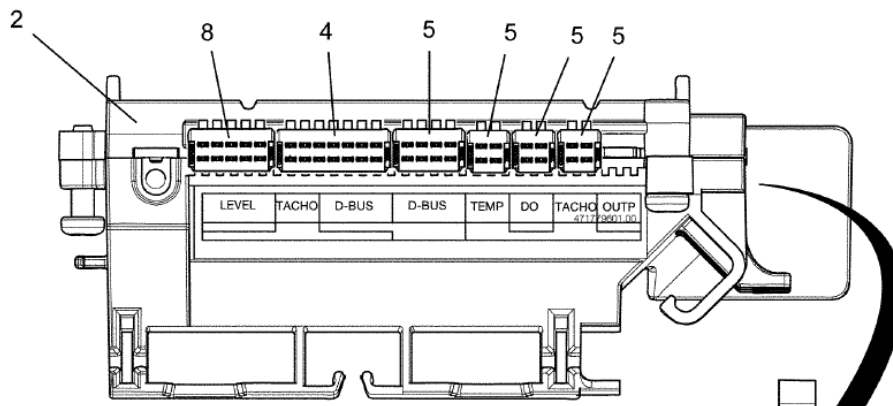
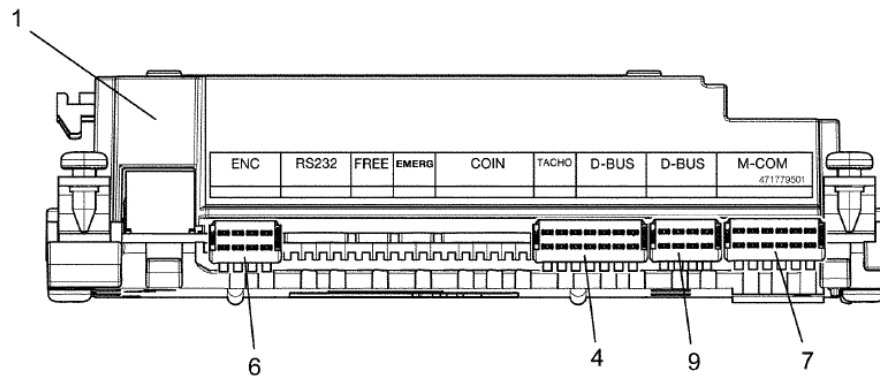
Illustration
Illustration
500231/1

Issue
Utgåva
5

Month
Månad
10

2015

Pos	Qty	Part.no	Description	Beskrivning	Notes
1	1	432682002	CPU	CPU	Without software. Software available on website.
2	1	432680901	I/O module	I/O modul	Type 10
3	1	432634606	Cover	Skydd	
4	2	432635302	Ground terminal	Jordanslutning	
5	1	471886103	Level guard	Nivåvakt	
6	2	471244501	Hose	Slang	L=70
7	1	471886302	Level guard	Nivåvakt	
8	1	471226569	T-pipe	T-rör	
9	2	471787302	Cable tie	Buntband	



500582_01

PW9C
Cables
Kablage

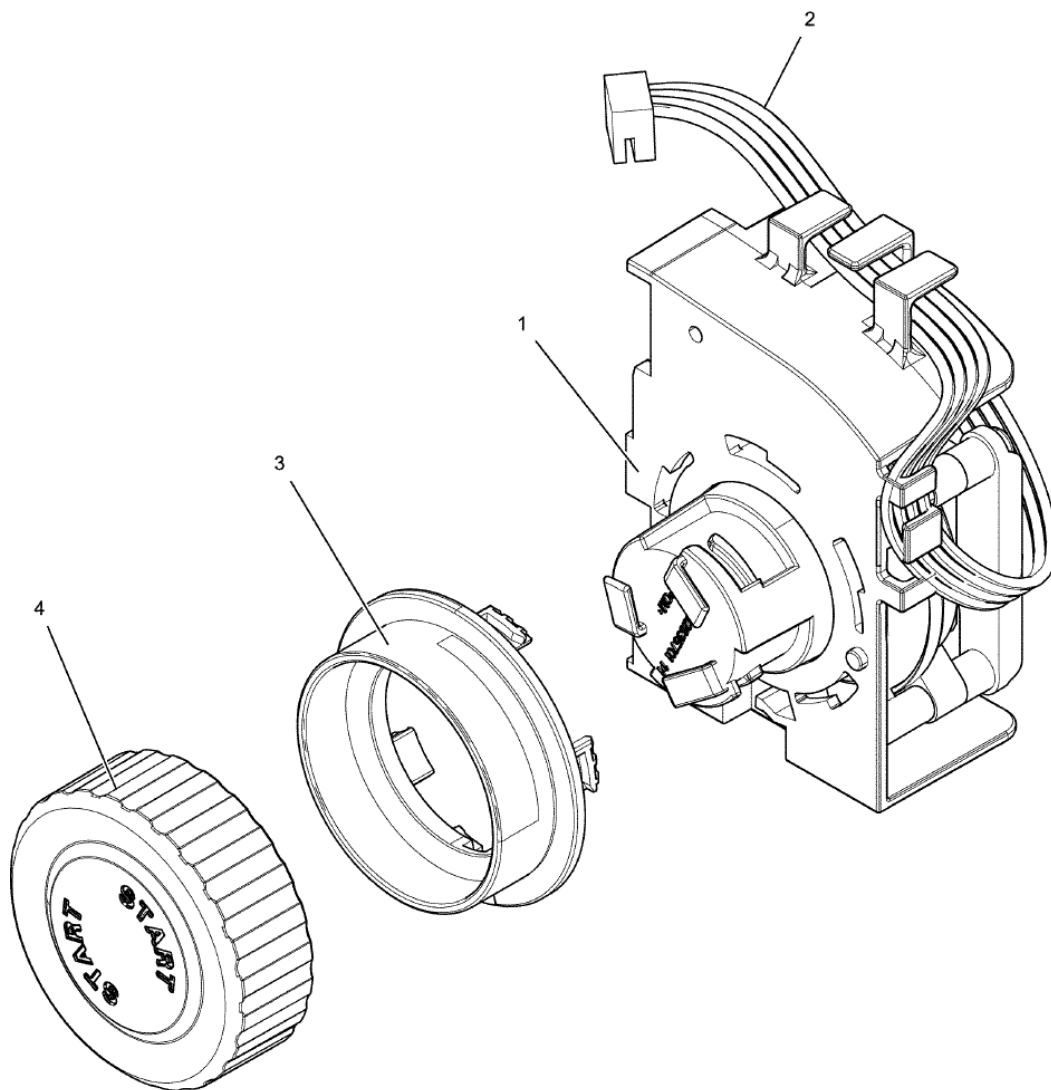
Illustration
Illustration
500582/0

Issue
Utgåva
1

Month
Månad
5

2015

Pos	Qty	Part.no	Description	Beskrivning	Notes
1	1	*	CPU	CPU	Without software. Software available on website. See illustration: 500231
2	1	*	I/O module	I/O modul	Type 10 See illustration: 500231
3	1	413308409	Cable set	Ledningssats	P-bus
4	1	413327701	Cable set	Ledningssats	7-pole
5	1	432290526	Cable set	Ledningssats	Door
6	1	413327420	Cable set	Ledningssats	4-pole
7	1	413327610	Cable set	Ledningssats	M-COM
8	1	413327501	Cable set	Ledningssats	Level 5-pole
9	1	413327440	Cable set	Ledningssats	D-bus 4-pole
10	1	*			Not used



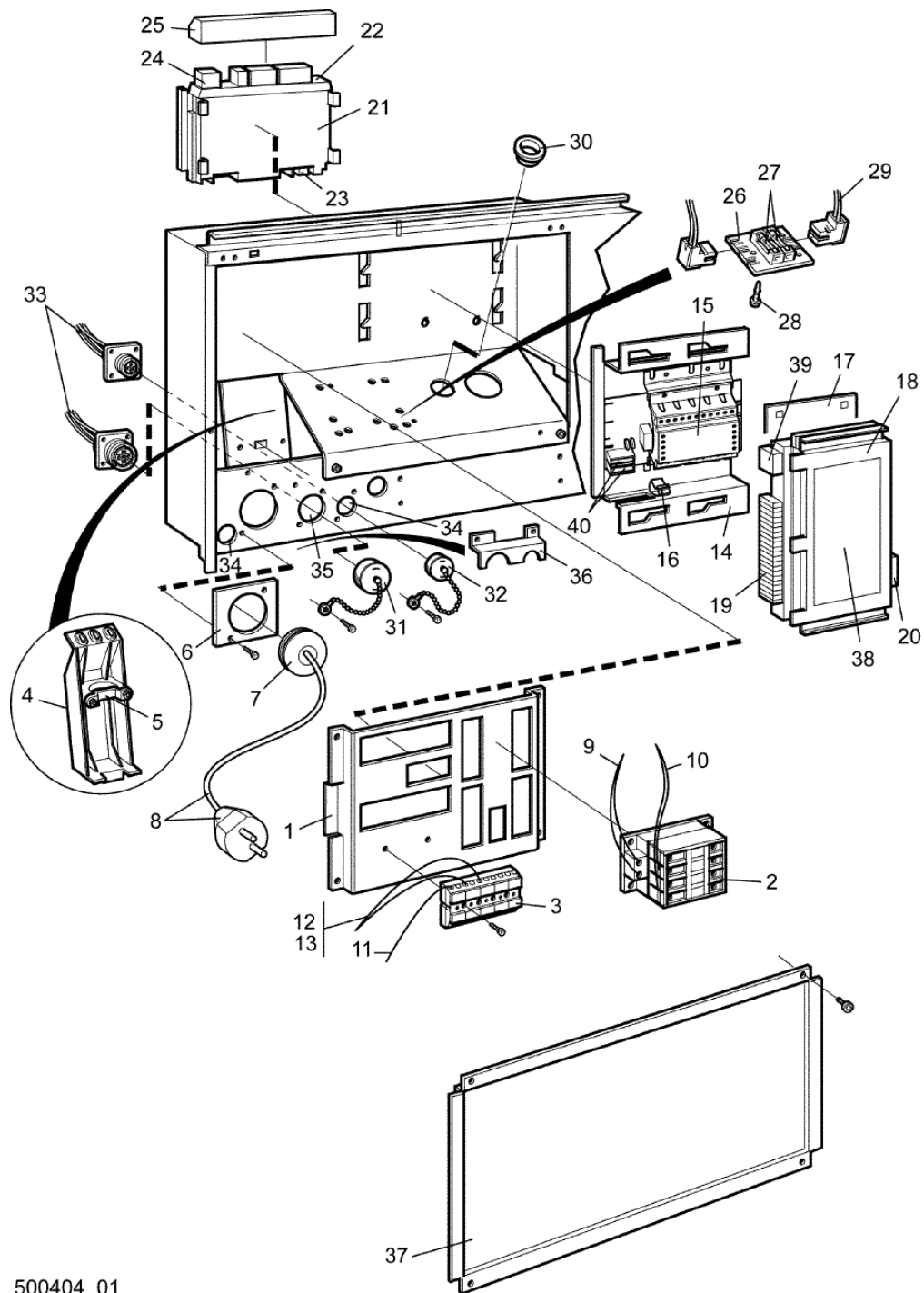
500237

Issue Month Year
01 10 11

PW9C
Program selector
Programväljare

Illustration	Issue	Month	
Illustration	Utgåva	Månad	
500237/0	1	4	2013

Pos	Qty	Part.no	Description	Beskrivning	Notes
1	1	432681002	Program selector	Programväljare	
2	1		Cable set	Ledningssats	
3	1	432635601	Cover	Lock	
4	1	432635502	Knob	Vred	



500404_01

PW9C
Electric components connection
Eldetaljer anslutning

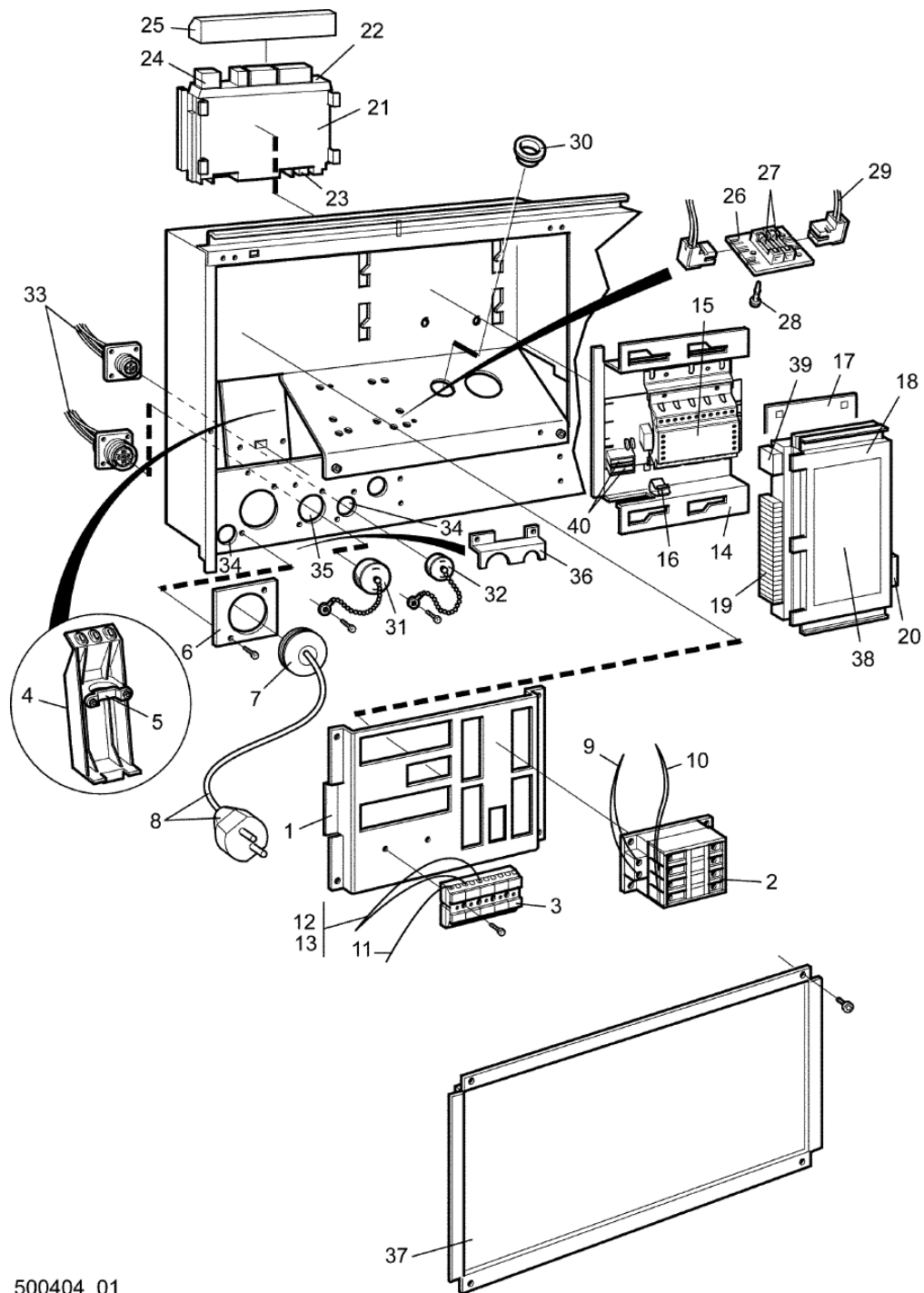
Illustration
Illustration
500404/0

Issue
Utgåva
4

Month
Månad
10

2018

Pos	Qty	Part.no	Description	Beskrivning	Notes
1	1	432215401	Mounting plate	Monteringsplåt	
2	1	438963622	Contactor	Kontaktor	220-240V 50Hz
2	1	438963623	Contactor	Kontaktor	200-240V 60Hz
2	1	438963624	Contactor	Kontaktor	50/60Hz
3	1	471878301	Block	Plint	
4	1	432221401	Cable clamp	Kabelklämma	Plastic
5	1	471785916	Clamp	Klämma	Upper part
6	1	432219905	Plate	Plåt	Ø33
7	1	438872002	Grommet	Genomföring	M32
8	1	490444017	Cable	Kabel	
9	1	413318202	Cable set	Ledningssats	Heating
10	4	432295403	Cable set	Ledningssats	
11	1	432298303	Cable set	Ledningssats	
12	1	413308235	Cable set	Ledningssats	
13	1	413290502	Cable set	Ledningssats	Trafo
14	1	432225701	Mounting plate	Monteringsplåt	
15	1	432680508	Power supply unit	Strömförsörjningsenhet	5A
16	1	432632001	Clamp	Klämma	
17	1	432225601	Plate	Plåt	
18	1	432693005	I/O module	I/O modul	Type 2
19	Rq	438870101	Multistik	Kantanslutning	
19	Rq	438870103	Multistik	Kantanslutning	
20	1	413327430	Cable set	Ledningssats	D-bus
21	1	432690304	I/O module	I/O modul	Type 1
22	1	471778902	Sign	Skylt	
23	1	413327432	Cable set	Ledningssats	4-pole
24	1	413308425	Cable set	Ledningssats	4-pole
25	1	432632301	Cover	Skydd	
26	1	438879702	Printed circuit board	Kretskort	
27	2	471875011	• Fuse	• Säkring	1,25A

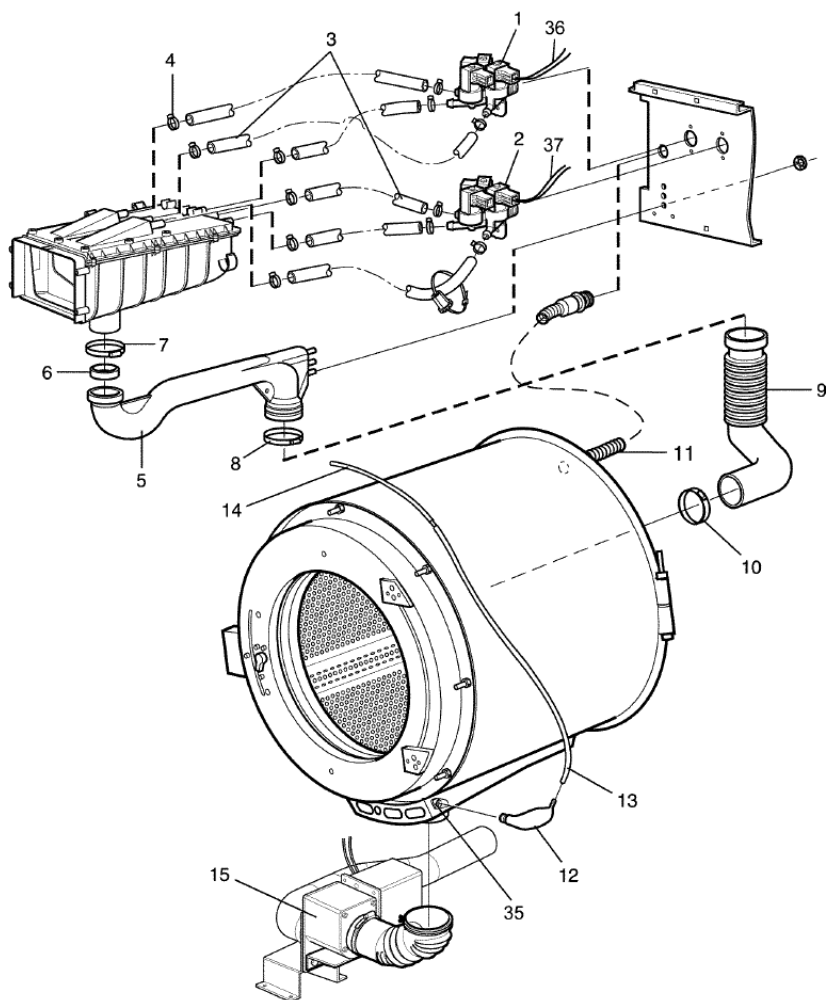


500404_01

PW9C
Electric components connection
Eldetaljer anslutning

Illustration	Issue	Month	
Illustration	Utgåva	Månad	
500404/0	4	10	2018

Pos	Qty	Part.no	Description	Beskrivning	Notes
28	3	471796002	Support	Stöd	
29	1	413308205	Cable set	Ledningssats	
30	1	471798401	Grommet	Genomföring	
31	1	438795002	Cover washer	Täckbricka	14-pole
32	1	438795001	Cover washer	Täckbricka	4-pole
33	1	413294601	Cable set	Ledningssats	
34	2	471797703	Blind plug	Blindpropp	Ø22
35	1	471797704	Blind plug	Blindpropp	Ø28
36	1	432122001	Cover	Skydd	
37	1	432360402	Cover	Lock	Without hole
38	1	471467393	Sign	Skylt	I/O-card type 2
39	1	413308402	Cable set	Ledningssats	P-bus 4-pole
40	1	471875014	Fuse	Säkring	5A slow



500335_01

PW9C
Drain valve and hoses
Avloppsventil och slangar

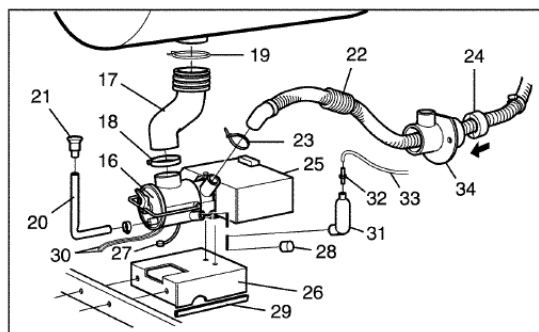
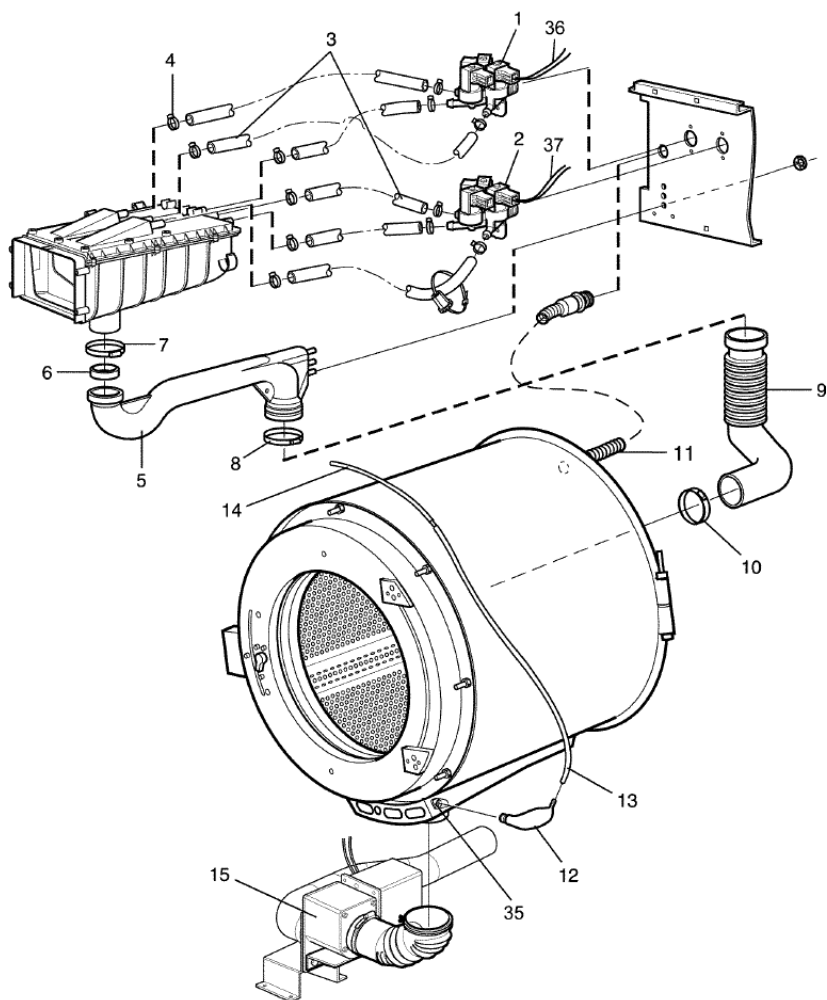
Illustration
Illustration
500335/0

Issue
Utgåva
1

Month
Månad
4

2013

Pos	Qty	Part.no	Description	Beskrivning	Notes
1	1	471823682	Valve	Ventil	3-way, 208-240V 50/60Hz, BSP
1	1	471823683	Valve	Ventil	3-way, 208-240V 60Hz, NH USA
2	1	471823682	Valve	Ventil	3-way, 208-240V 50/60Hz, BSP
2	1	471823683	Valve	Ventil	3-way, 208-240V 60Hz, NH USA
3	Rq	877521108	Hose	Slang	Per 1 m
3	1	471824307	Solenoid valve	Magnetventil	230V 50Hz
4	12	736281651	Hose clamp	Slangklämma	Ø13-19
5	1	432638701	Hose	Slang	
6	1	432639001	Seal	Tätning	
7	1	471787108	Hose clamp	Slangklämma	Ø69
8	1	736284651	Hose clamp	Slangklämma	Ø73-83
9	1	432231201	Hose	Slang	
10	1	471787108	Hose clamp	Slangklämma	Ø69
11	1	432250801	Hose	Slang	
12	1	432250701	Air tube	Luftklocka	
13	1	438812001	Hose	Slang	L=940
14	1	471208451	Hose	Slang	L=500
15	1	*	Drain valve	Avloppsventil	50/60Hz See illustration: 500294
16	1	471826913	Pump	Pump	50Hz
16	1	471826914	Pump	Pump	60Hz
16	1	471826952	• Filter	• Filter	
17	1	432637601	Hose	Slang	
18	1	736283751	Hose clamp	Slangklämma	Ø48-54
19	1	471787107	Hose clamp	Slangklämma	
20	1	471685885	Hose	Slang	
21	1	471685886	Plug	Plugg	
22	1	471685882	Drain hose	Avloppsslang	
23	1	736282551	Hose clamp	Slangklämma	Ø32
24	1	438502201	Discharge	Avlastning	
25	1	432639101	Cover	Skydd	



500335_01

PW9C**Drain valve and hoses****Avloppsventil och slangar**

Illustration

Illustration
500335/0

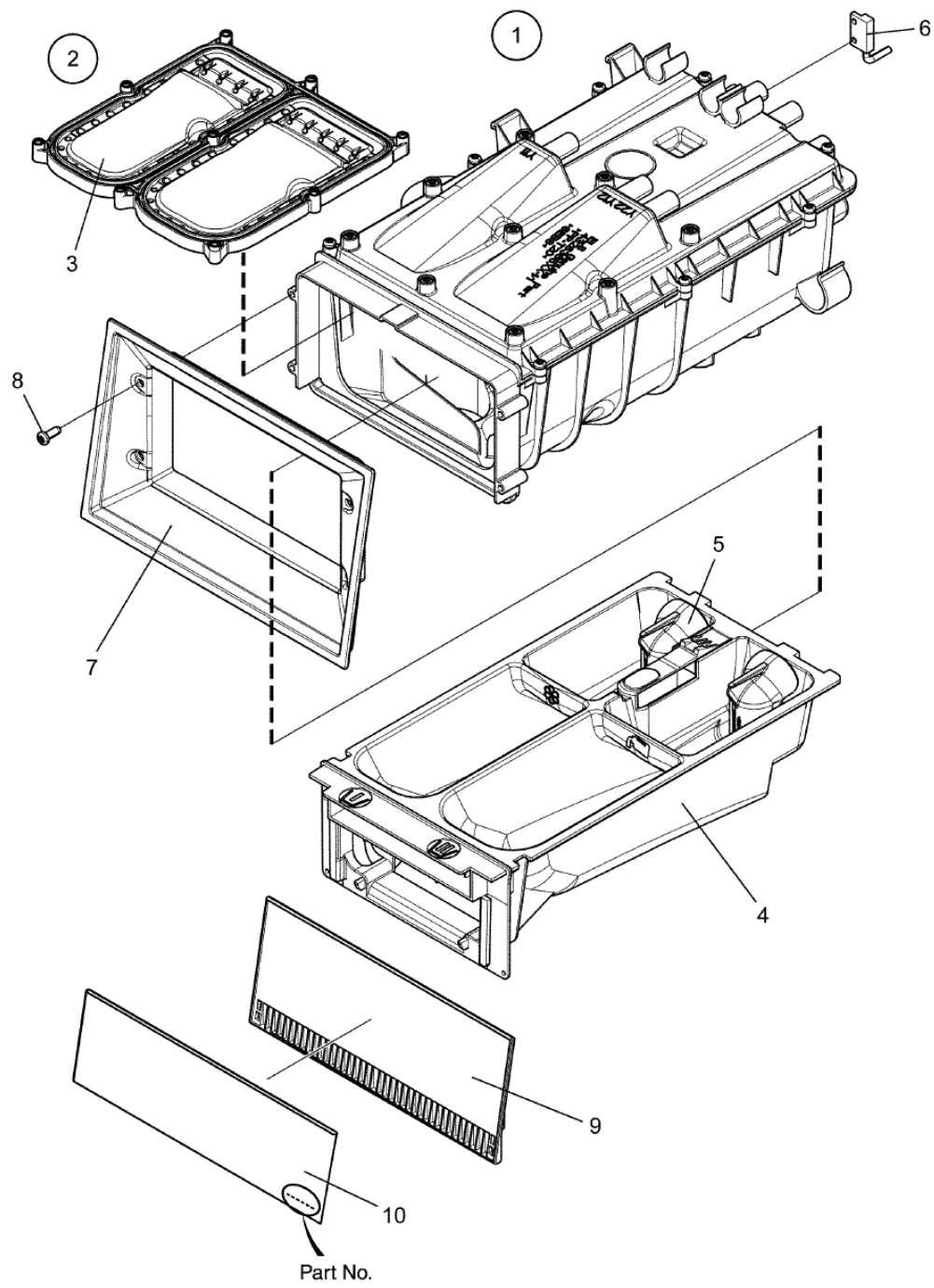
Issue

Utgåva
1

Month

Månad
4**2013**

Pos	Qty	Part.no	Description	Beskrivning	Notes
26	1	432637501	Bracket	Konsol	
27	1	432298210	Ground cable	Jordkabel	
28	1	471864404	Plug	Plugg	
29	1	471815310	Strip	List	
30	1	413290302	Cable set	Ledningssats	
31	1	438502401	Pressure chamber	Tryckkammare	
32	1	471240152	Nipple	Nippel	
33	1	471243315	Hose	Slang	M10X80
34	1	413500401	Drain pipe connection	Avloppsstos	
35	1	432250601	Connection	Anslutning	
36	1	413308607	Cable set	Ledningssats	Cold water
37	1	413308608	Cable set	Ledningssats	Hot water



500328_02

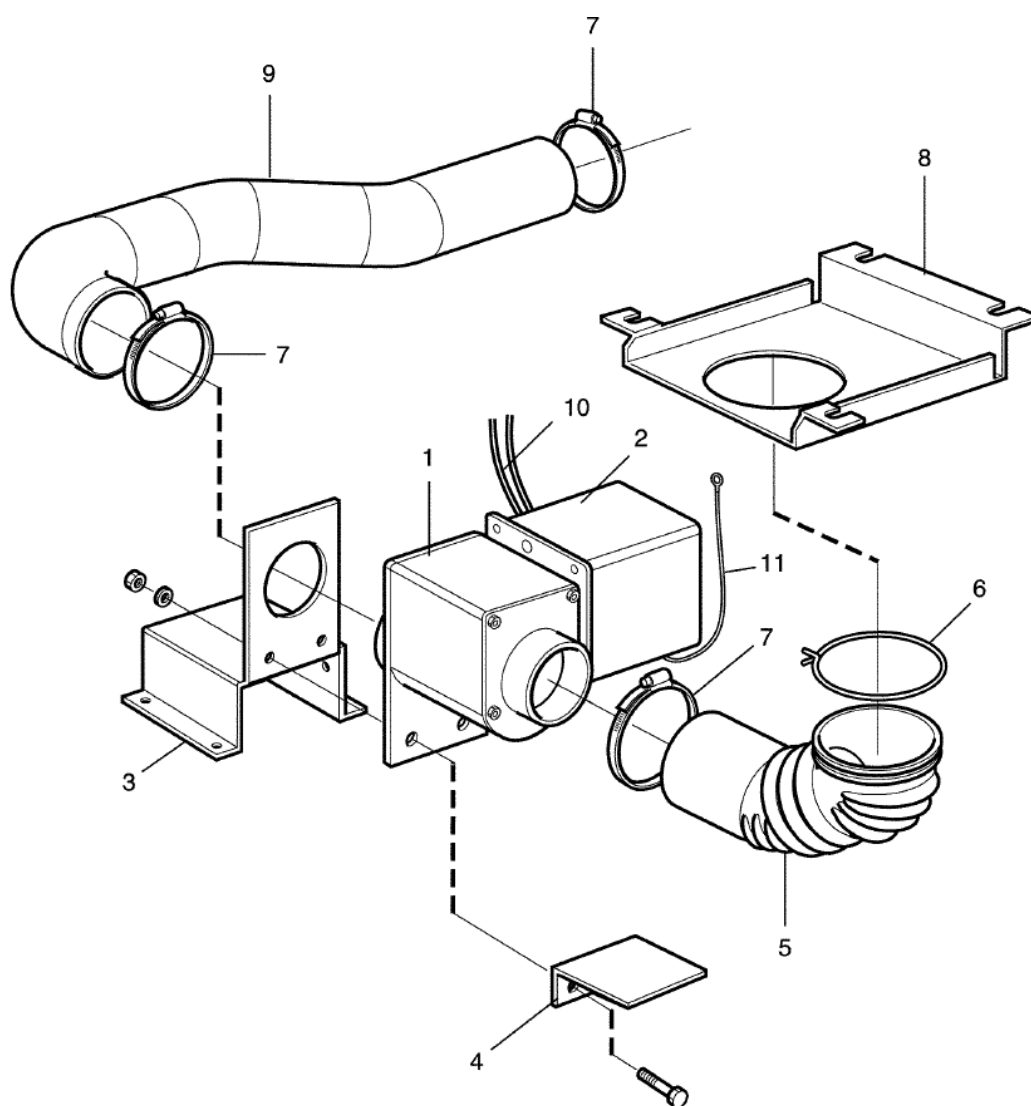
PW9C
Detergent container
Tvättmedelsbehållare

Illustration
Illustration
500328/0

Issue
Utgåva
3

Month
Månad
9
2021

Pos	Qty	Part.no	Description	Beskrivning	Notes
1	1	432636152	Detergent container	Tvättmedelsbehållare	Complete
2	1	472996601	• <i>Spraying plate</i>	• <i>Spolplatta</i>	Kit
3	Rq	*	•• <i>Spraying plate</i>	•• <i>Spolplatta</i>	
4	1	432636851	•• <i>Box</i>	•• <i>Låda</i>	
5	2	432636451	••• <i>Siphon</i>	••• <i>Hävert</i>	
6	1	487027452	Magnetic switch	Magnetbrytare	
7	1	432638501	Frame	Ram	
8	4	471834608	Screw	Skruv	
9	1	438508211	Handle	Handtag	
10	1	432275331	Instruction plate	Instruktionsskylt	PW9C

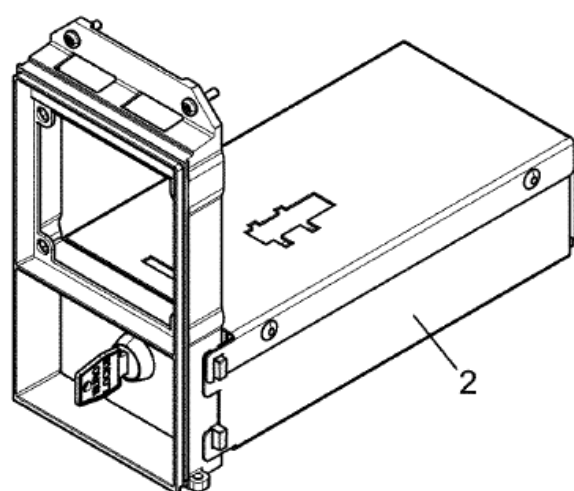
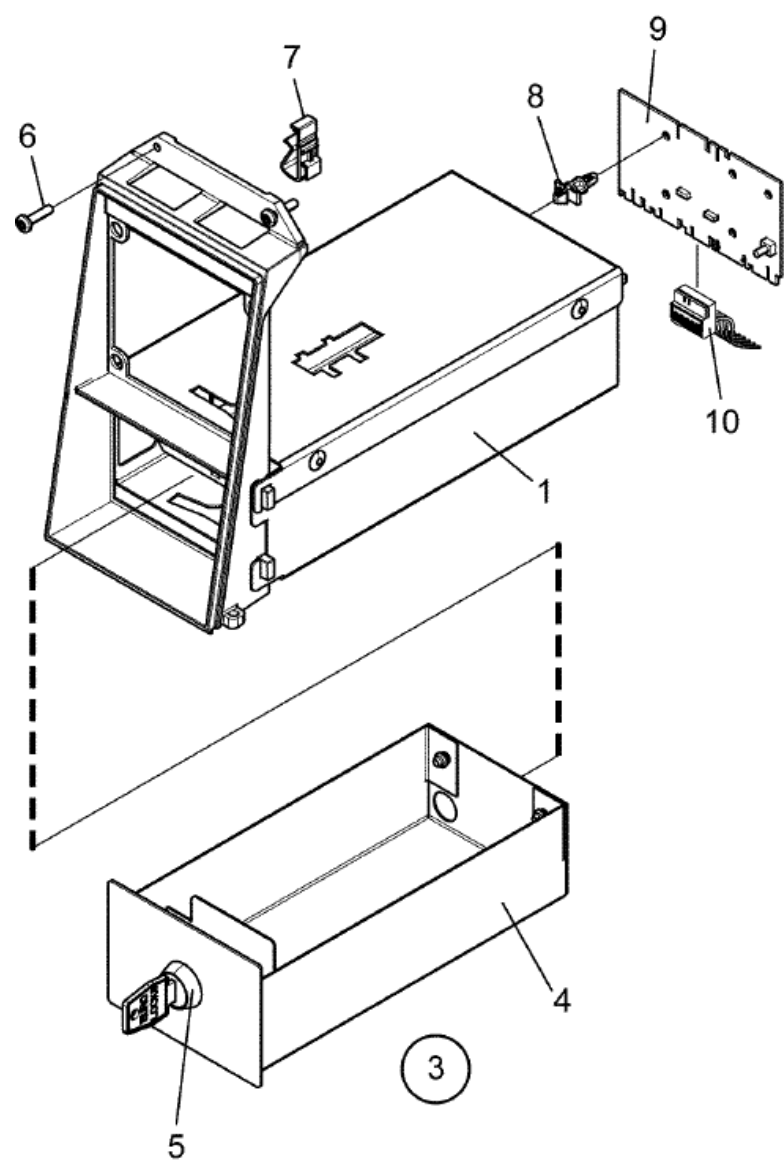


500294_01

PW9C
Drain valve, electrical
Avloppsventil, elektrisk

Illustration	Issue	Month	
Illustration	Utgåva	Månad	
500294/0	1	4	2013

Pos	Qty	Part.no	Description	Beskrivning	Notes
1	1	471921965	Drain valve	Avloppsventil	50/60Hz
2	1	432254801	Cover	Kåpa	
3	1	432253001	Mounting plate	Fästplåt	
4	1	432253601	Support	Stöd	
5	1	432252401	Hose	Slang	
6	1	471787107	Hose clamp	Slangklämma	
7	3	736283751	Hose clamp	Slangklämma	Ø48-54
8	1	432253401	Mounting plate	Fästplåt	
9	1	432251701	Hose	Slang	
10	1	413290202	Cable set	Ledningssats	
11	1	432298210	Ground cable	Jordkabel	



500452_01

PW9C

Coinbox housing (for coinbox height 70mm)
Mynthus (för myntlåda höjd 70mm)

Illustration

Illustration

500452/0

Issue

Utgåva

1

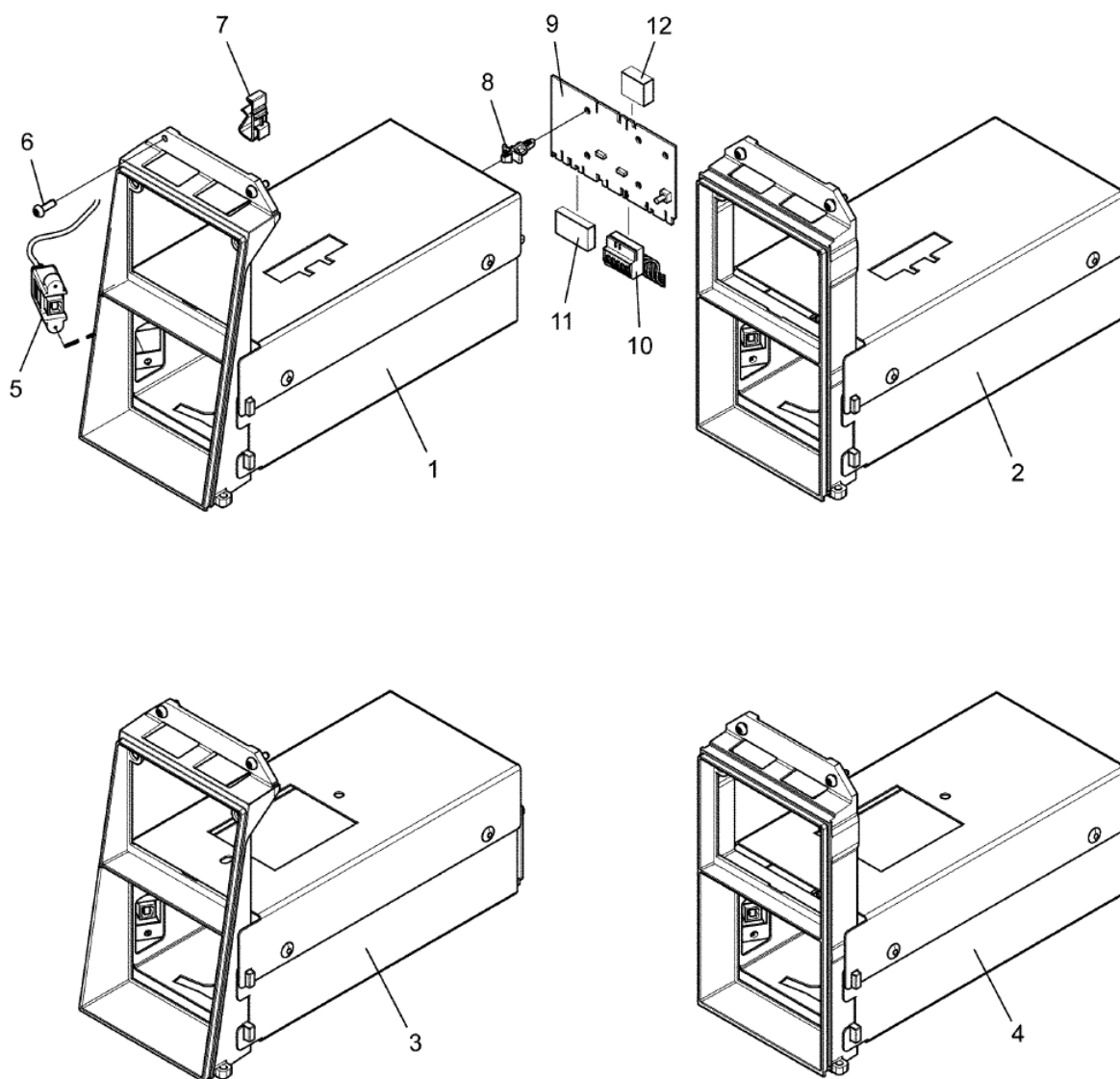
Month

Månad

4

2013

Pos	Qty	Part.no	Description	Beskrivning	Notes
1	1	472995502	Coinbox housing	Mynthus	Slanted frame
2	1	472995504	Coinbox housing	Mynthus	Straight frame
3	1	432223302	Coin box	Myntlåda	Complete
4	1	432223202	• Coin box	• Myntlåda	
5	1	472991930	• Lock	• Lås	Random key
5	1	472991931	Lock	Lås	key 46080
5	1	472991932	Lock	Lås	key 46199
5	1	472991933	Lock	Lås	key 46819
6	2	471834115	Screw	Skruv	
7	2	432632001	Clamp	Klämma	
8	4	471796002	Support	Stöd	
9	1	438877509	Printed circuit board	Kretskort	
10	1	413327601	Cable set	Ledningssats	6-pole



500453_01

PW9C**Coinbox housing (for coinbox height 90mm)
Mynthus (för myntlåda höjd 90mm)**

Illustration

Illustration

500453/0

Issue

Utgåva

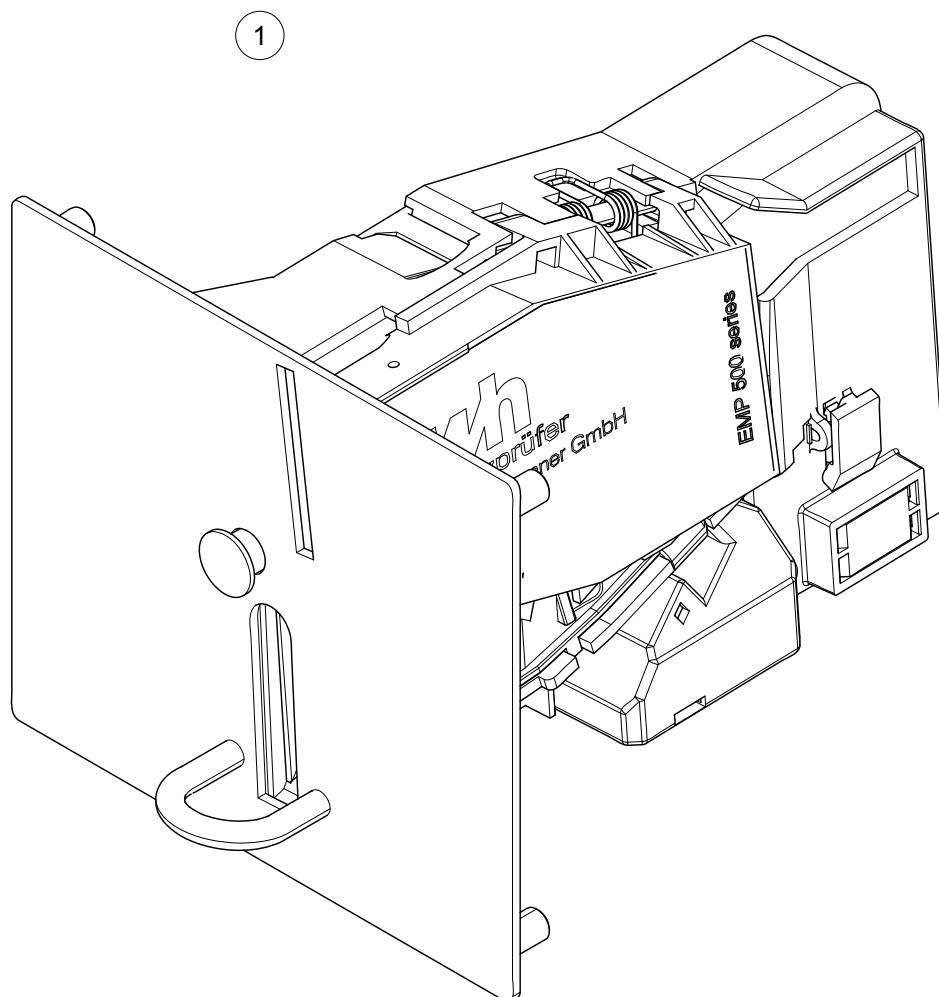
1

Month

Månad

4**2013**

Pos	Qty	Part.no	Description	Beskrivning	Notes
1	1	472995501	Coinbox housing	Mynthus	Slanted frame
2	1	472995503	Coinbox housing	Mynthus	Straight frame
3	1	472995505	Coinbox housing	Mynthus	Slanted frame
4	1	472995506	Coinbox housing	Mynthus	Straight frame
5	1	413293601	Cable	Kabel	USB
6	2	471837601	Screw	Skruv	M4X12
6	1	471837699	Tool	Verktyg	Tool for 471837601 Tool for 471837601
7	2	432632001	Clamp	Klämma	
8	4	471796002	Support	Stöd	
9	1	438877509	Printed circuit board	Kretskort	
10	1	413327601	Cable set	Ledningssats	6-pole
11	1	438870102	Frame	Ram	3-pole
11	1	438870101	Multistik	Kantanslutning	3-pole
12	1	438870104	Frame	Ram	2-pole
12	1	438870103	Multistik	Kantanslutning	2-pole



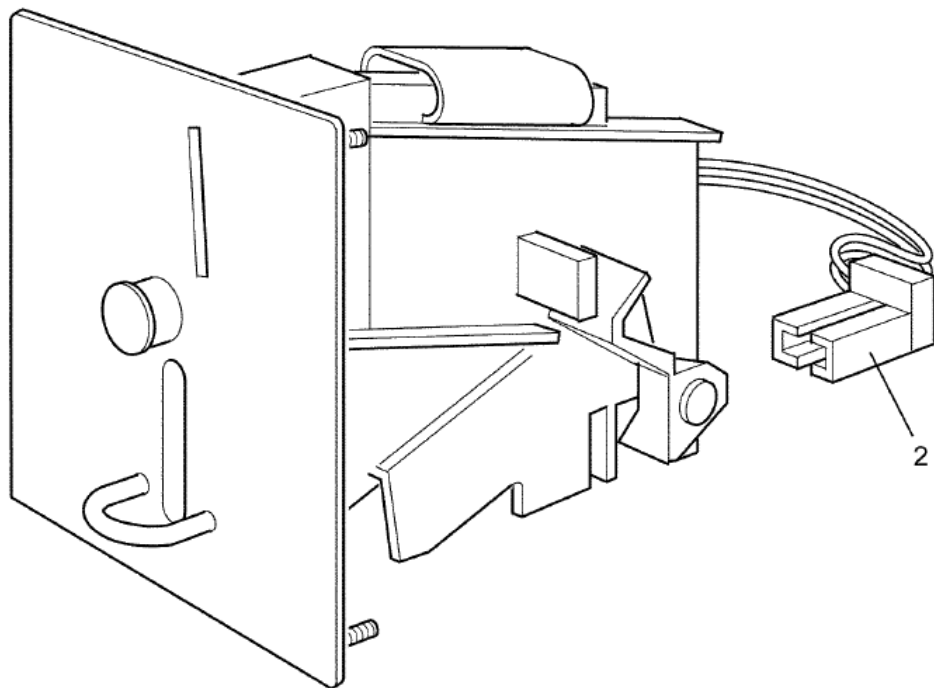
500199_01

PW9C
Electronic coin meter
Elektronisk myntmätare

Illustration	Issue	Month	
Illustration	Utgåva	Månad	
500199/1	6	10	2019

Pos	Qty	Part.no	Description	Beskrivning	Notes
1	1	438894001	Coin meter	Myntmätare	JPY+KRW
1	1	438894002	Coin meter	Myntmätare	NZD+AUD
1	1	438894003	Coin meter	Myntmätare	EUR+DKK+NOK
1	1	438894004	Coin meter	Myntmätare	EUR+SEK
1	1	438894005	Coin meter	Myntmätare	HKD+TWD
1	1	438894006	Coin meter	Myntmätare	MOP+MYR+SGD
1	1	438894007	Coin meter	Myntmätare	CHF+CZK+LTL
1	1	438894008	Coin meter	Myntmätare	AED+ZAR+ILS
1	1	438894009	Coin meter	Myntmätare	GBP+EUR
1	1	438894010	Coin meter	Myntmätare	PLN+EUR
1	1	438894011	Coin meter	Myntmätare	EUR+Tokens
1	1	438894012	Coin meter	Myntmätare	CNY
1	1	438894013	Coin meter	Myntmätare	HUF
1	1	438894150	Coin meter	Myntmätare	CAD+USD
1	1	438894015	Coin meter	Myntmätare	Token WA1-2, VÖL 1-2

1



500201

Issue	Month	Year
02	11	11

PW9C
Coin meter
Myntmätare

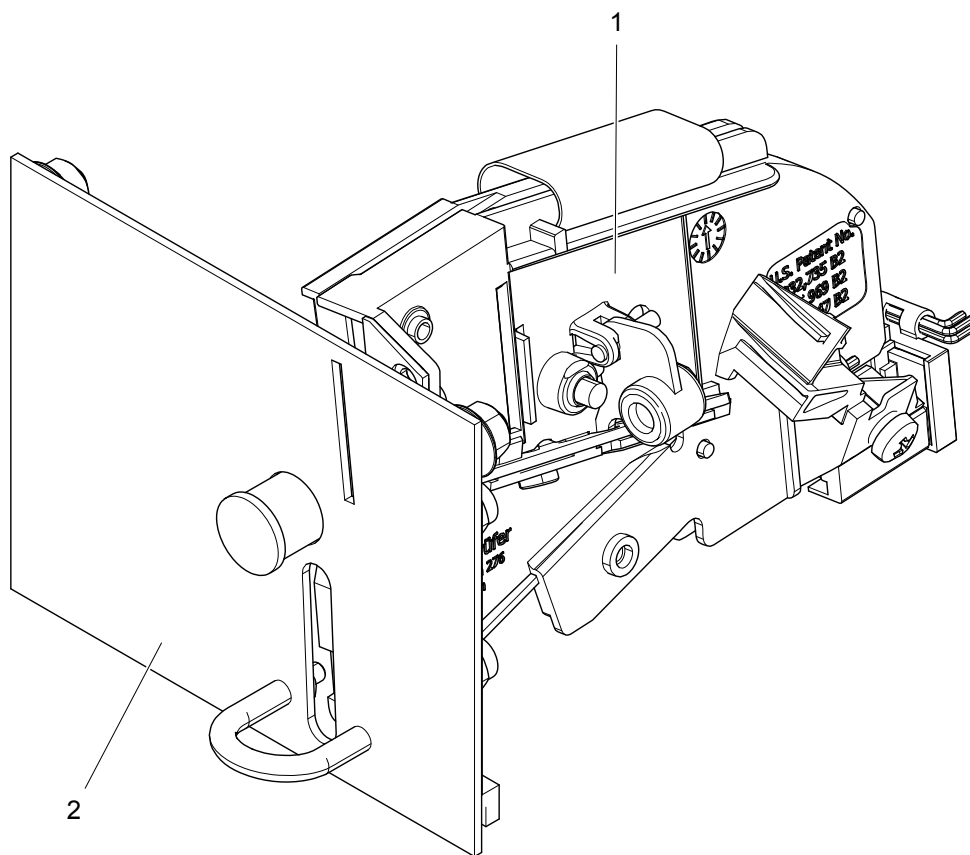
Illustration
Illustration
500201/0

Issue
Utgåva
5

Month
Månad
7

2013

Pos	Qty	Part.no	Description	Beskrivning	Notes
1	1	438893159	Coin meter	Myntmätare	TOKEN 25,7x1,6
1	1	438893160	Coin meter	Myntmätare	TOKEN 26,0x2,1
1	1	438893175	Coin meter	Myntmätare	TOKEN 22,0x1,6
1	1	438893176	Coin meter	Myntmätare	TOKEN 25,0x2,0
1	1	438893178	Coin meter	Myntmätare	TOKEN 23,5x1,7
1	1	438893179	Coin meter	Myntmätare	TOKEN 25,8x1,7
1	1	438893181	Coin meter	Myntmätare	TOKEN 27,4x1,6
1	1	438893182	Coin meter	Myntmätare	TOKEN 25,0x1,8
1	1	438893185	Coin meter	Myntmätare	TOKEN 22,5x1,5
1	1	438893186	Coin meter	Myntmätare	TOKEN 27,0x1,6
1	1	438893187	Coin meter	Myntmätare	TOKEN 24,3x1,5
1	1	438893188	Coin meter	Myntmätare	TOKEN 23,7x1,6
1	1	438893189	Coin meter	Myntmätare	TOKEN 19,0x1,0
1	1	438893190	Coin meter	Myntmätare	TOKEN 19,0x1,5
1	1	438893191	Coin meter	Myntmätare	TOKEN 22,35x1,6
1	1	438893204	Coin meter	Myntmätare	2 Coins, 0,50+1 EUR
2	Rq	438892499	• <i>Sensor</i>	• <i>Sensor</i>	



500446_02

PW9C**Coin meter (for coinbox height 90mm)****Myntmätare (för myntlåda höjd 90mm)**

Illustration

Illustration

500446/2

Issue

Utgåva

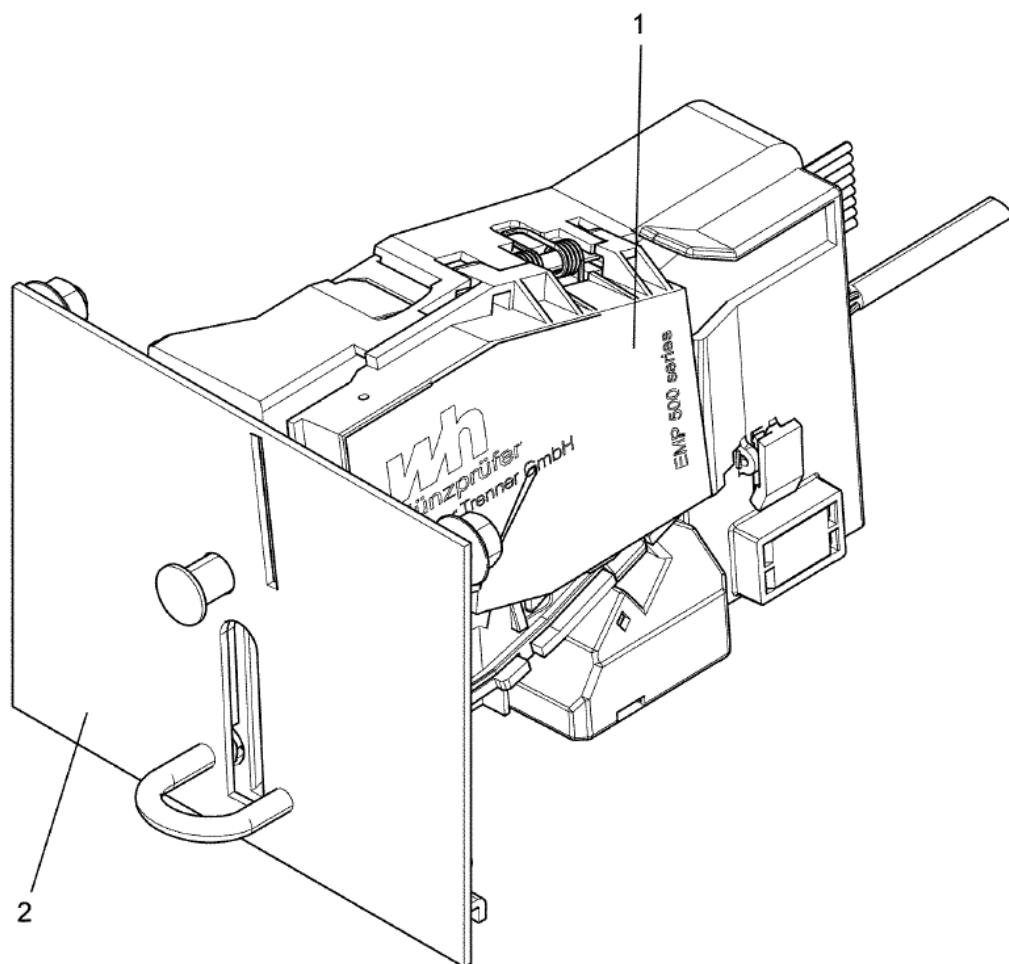
2

Month

Månad

5**2014**

Pos	Qty	Part.no	Description	Beskrivning	Notes
1	1	438892110	Coin meter	Myntmätare	0,25 USD
2	1	438892101	Front panel	Frontplåt	0,25 USD



500544_01

PW9C**Electronic coin meter (for coinbox height 90mm)****Elektronisk myntmätare (för myntlåda höjd 90mm)**

Illustration

Illustration

500544/0

Issue

Utgåva

1

Month

Månad

6**2014**

Pos	Qty	Part.no	Description	Beskrivning	Notes
1	1	438893501	Coin meter	Myntmätare	JPY+KRW
1	1	438893550	Coin meter	Myntmätare	CAD+USD
2	1	438893401	Front panel	Frontplåt	JPY+KRW
2	1	438893450	Front panel	Frontplåt	CAD+USD

Numerical index/Nummer register

Part.no/Part.no	Page/Sida	Part.no/Part.no	Page/Sida	Part.no/Part.no	Page/Sida	Part.no/Part.no	Page/Sida
413120101	31	432198201	17	432639101	37	438894007	49
413290202	19	432200003	11	432680508	33	438894008	49
413290302	43	432200020	11	432680901	27	438894009	49
413290302	39	432205702	11	432681002	31	438894010	49
413290502	33	432215401	33	432682002	27	438894011	49
413291901	21	432216411	11	432690304	33	438894012	49
413291901	23	432218001	11	432693005	33	438894013	49
413291903	21	432219905	33	438406201	15	438894015	49
413291903	23	432221401	33	438502201	37	438894150	49
413293601	47	432221501	11	438502401	39	438956101	15
413294601	35	432223202	45	438508112	11	438956101	17
413295002	7	432223302	45	438508211	41	438963622	33
413299010	19	432224604	11	438510902	11	438963623	33
413299012	19	432225601	33	438511401	11	438963624	33
413308205	35	432225701	33	438512405	19	438979902	19
413308235	33	432227003	15	438523301	21	438979903	19
413308402	35	432227301	11	438795001	35	471208451	37
413308409	29	432227602	15	438795002	35	471226569	27
413308425	33	432231201	37	438812001	37	471240152	39
413308607	39	432236901	25	438815501	13	471243315	39
413308608	39	432250601	39	438816001	7	471244501	27
413318202	33	432250701	37	438817201	19	471467267	11
413318425	23	432250801	37	438870101	33	471467393	35
413327420	29	432251701	43	438870101	47	471685882	37
413327424	21	432252401	43	438870102	47	471685885	37
413327430	33	432253001	43	438870103	33	471685886	37
413327432	33	432253401	43	438870103	47	471771113	19
413327440	29	432253402	9	438870104	47	471778902	33
413327501	29	432253601	43	438872002	33	471780702	7
413327601	45	432254801	43	438877402	21	471785916	33
413327601	47	432275310	25	438877402	23	471787107	37
413327610	23	432275331	41	438877509	45	471787107	43
413327610	29	432290526	15	438877509	47	471787108	37
413327701	29	432290526	29	438879702	33	471787108	37
413500401	39	432290527	17	438892101	53	471787302	27
413500601	11	432295403	33	438892110	53	471796002	35
413970161	19	432296101	21	438892499	51	471796002	45
432120601	7	432296101	23	438893159	51	471796002	47
432121102	7	432298210	39	438893160	51	471797703	35
432121204	7	432298210	43	438893175	51	471797704	35
432122001	35	432298301	19	438893176	51	471798401	35
432122901	19	432298303	33	438893178	51	471815310	39
432133701	7	432298501	9	438893179	51	471819201	7
432133701	7	432319290	9	438893181	51	471819601	11
432133801	7	432360402	35	438893182	51	471823682	37
432145301	7	432632001	33	438893185	51	471823682	37
432145801	7	432632001	45	438893186	51	471823683	37
432150011	13	432632001	47	438893187	51	471823683	37
432154001	13	432632301	33	438893188	51	471824307	37
432154501	13	432633401	15	438893189	51	471826913	37
432155001	13	432634606	27	438893190	51	471826914	37
432156001	13	432635302	27	438893191	51	471826952	37
432156501	13	432635502	31	438893204	51	471832301	13
432157011	13	432635601	31	438893401	55	471832802	13
432157012	13	432636152	41	438893450	55	471832806	7
432157013	13	432636451	41	438893501	55	471832807	7
432160521	13	432636851	41	438893550	55	471834115	45
432184005	15	432637501	39	438894001	49	471834213	19
432185501	15	432637601	37	438894002	49	471834247	15
432187001	15	432638201	9	438894003	49	471834247	17
432188502	15	432638501	41	438894004	49	471834436	15
432195002	15	432638701	37	438894005	49	471834608	41
432195101	15	432639001	37	438894006	49	471835614	19

Numerical index/Nummer register

Part.no/Part.no	Page/Sida	Part.no/Part.no	Page/Sida	Part.no/Part.no	Page/Sida	Part.no/Part.no	Page/Sida
471837601	47	736283751	43				
471837699	47	736284651	37				
471840402	15	877521108	37				
471850214	13						
471850214	19						
471850234	7						
471855503	7						
471864404	39						
471875011	33						
471875014	35						
471876802	21						
471876802	23						
471878301	33						
471882601	19						
471882701	19						
471886103	27						
471886302	27						
471921965	43						
471922259	13						
471955054	9						
471955059	9						
471982199	7						
471983705	7						
471983741	7						
472991301	15						
472991302	7						
472991308	7						
472991312	13						
472991322	7						
472991930	45						
472991931	45						
472991932	45						
472991933	45						
472992005	15						
472992907	21						
472994604	23						
472995121	11						
472995128	11						
472995209	11						
472995305	15						
472995501	47						
472995502	45						
472995503	47						
472995504	45						
472995505	47						
472995506	47						
472995508	25						
472996601	41						
487027452	41						
490444017	33						
725236661	15						
725246151	7						
725246451	7						
725246571	7						
732211801	7						
732211801	7						
732211801	13						
732211801	19						
735313300	13						
735937001	13						
736281651	37						
736282551	37						
736283751	37						



Electrolux Professional AB
341 80 Ljungby, Sweden
www.electroluxprofessional.com