

LAVASTOVIGLIE SOTTOTAVOLO / LAVASTOVIGLIE SOTTOTAVOLO CON ADDOLCITORE

UNDERCOUNTER DISHWASHER / UNDERCOUNTER DISHWASHER WITH WATER SOFTENER

NUC/EUC/KUC/VUC/NUCA/ZUCA/FUCA/EUCA/VUCA EUC...WS/NUC...WS/VUC...WS/ZUC...WS

| Code | Type | Ref. | Pagina/ Page | Code | Type | Ref. | Pagina/ Page |
|--------|-------------|------|--------------|--------|------------|------|--------------|
| 400035 | EUC1/2 | c2 | 3 4 5 8 | 400076 | ZUC1DP60 | d2 | 3 4 5 8 |
| 400036 | EUC1DP/2 | c3 | 3 4 5 8 | 400077 | EUC1GMS | c9 | 3 4 5 8 |
| 400040 | EUC3/2 | c4 | 3 4 5 8 | 400078 | ZUC1G | d8 | 3 4 5 8 |
| 400041 | NUC3DD | o | 3 4 5 8 | 400079 | ZUCA1DDG | f1 | 3 4 5 8 |
| 400045 | EUC3DP/2 | c5 | 3 4 5 8 | 400080 | ZUC1GMS | d9 | 3 4 5 8 |
| 400046 | EUC3DD/2 | c6 | 3 4 5 8 | 400081 | VUC1 | e1 | 3 4 5 8 |
| 400049 | ZUC1 | d3 | 3 4 5 8 | 400082 | VUC3 | e2 | 3 4 5 8 |
| 400050 | ZUC1DP | d4 | 3 4 5 8 | 400083 | VUC3G | e3 | 3 4 5 8 |
| 400053 | ZUC3 | d5 | 3 4 5 8 | 400085 | VUCA3G | e5 | 3 4 6 8 |
| 400055 | EUC1 | a | 3 4 5 8 | 400086 | VUC1G | e4 | 3 4 5 8 |
| 400056 | EUC1DP | c | 3 4 5 8 | 400087 | EUC1O | e7 | 3 4 5 8 |
| 400059 | EUC3 | b | 3 4 5 8 | 400088 | ZUC3D | f2 | 3 4 5 8 |
| 400061 | EUC3DP | d | 3 4 5 8 | 400090 | VUC1GMS | f3 | 3 4 5 8 |
| 400063 | EUC1G | w | 3 4 5 8 | 400095 | EUCAGROWM | e8 | 3 4 6 8 |
| 400064 | EUC1DP60 | i | 3 4 5 8 | 400096 | EUCAGROW6M | e9 | 3 4 6 8 |
| 400065 | EUC3DD | e | 3 4 5 8 | 400097 | EUC3DDMCD | e6 | 3 4 5 8 |
| 400066 | ZUCADDROW | a1 | 3 4 6 8 | 400098 | EUCA3DDMCD | a3 | 3 4 6 8 |
| 400067 | ZUCADDROW60 | a2 | 3 4 6 8 | 400116 | FUCA3DD | v | 3 4 6 8 |
| 400068 | EUCADD60 | b1 | 3 4 6 8 | 400120 | NUC1DPP | a8 | 3 4 5 8 |
| 400069 | ZUC3DP | d6 | 3 4 5 8 | 400121 | EUC1DDM60 | b9 | 3 4 5 8 |
| 400070 | ZUC3DD | d7 | 3 4 5 8 | 400122 | NUC1DUK | b4 | 3 4 5 8 |
| 400073 | EUC1G/2 | c7 | 3 4 5 8 | 400123 | NUC1DDUK | b5 | 3 4 5 8 |
| 400074 | EUCA1DDG | c8 | 3 4 6 8 | 400127 | KUC3 | m | 3 4 5 8 |
| 400075 | EUC1DP60 | d1 | 3 4 5 8 | 400128 | KUC3DP | n | 3 4 5 8 |

Pag./Page

| | |
|------|------------------------------------|
| 3 | Vista generale |
| 4 | Componenti idraulici |
| 5 | Circuito idraulico a pressione |
| 6 | Circuito idraulico atmosferico |
| 7 | Circuito idraulico con addolcitore |
| 8 | Componenti elettrici |
| 9-18 | Lista ricambi |
| 18 | KIT manutenzione annuale |

Marchio/Brand:**Z - A - E****Paese/Country:**

Tutti/All

Index

| |
|----------------------------------|
| Main view |
| Hydraulic components |
| Pressurized plumbing circuit |
| Atmospheric plumbing circuit |
| Water softener hydraulic circuit |
| Electrical components |
| Spare parts list |
| Yearly maintenance KIT |

LAVASTOVIGLIE SOTTOTAVOLO / LAVASTOVIGLIE SOTTOTAVOLO CON ADDOLCITORE

UNDERCOUNTER DISHWASHER / UNDERCOUNTER DISHWASHER WITH WATER SOFTENER

NUC/EUC/KUC/VUC/NUCA/ZUCA/FUCA/EUCA/VUCA EUC...WS/NUC...WS/VUC...WS/ZUC...WS

| Code | Type | Ref. | Pagina/ Page | Code | Type | Ref. | Pagina/ Page |
|--------|------------|------|--------------|--------|-------------|------|--------------|
| 400130 | NUC1DDRUKP | b6 | 3 4 5 8 | 400146 | NUC3DP | k | 3 4 5 8 |
| 400131 | NUCA1GRUK | b7 | 3 4 6 8 | 400149 | NUC1DP60 | q | 3 4 5 8 |
| 400132 | NUC3DPP | c1 | 3 4 5 8 | 400150 | NUC1DPA | r | 3 4 5 8 |
| 400133 | NUC1D | b2 | 3 4 5 8 | 400151 | ZUCA1 | s | 3 4 6 8 |
| 400134 | NUC1DD | b3 | 3 4 5 8 | 400152 | ZUCA3 | t | 3 4 6 8 |
| 400137 | EUCA1DP | a5 | 3 4 6 8 | 400153 | EUCADDROW | a3 | 3 4 6 8 |
| 400138 | NUC1GMS | a6 | 3 4 5 8 | 400154 | EUCADDROW60 | a4 | 3 4 6 8 |
| 400139 | EUC3DPCAG | a7 | 3 4 5 8 | 400155 | NUC1DPDD | b8 | 3 4 5 8 |
| 400140 | NUC1 | f | 3 4 5 8 | 690028 | NUC1G | x | 3 4 5 8 |
| 400141 | NUC1DP | g | 3 4 5 8 | 698005 | NUCA1DDG | z | 3 4 6 8 |
| 400144 | NUC3 | h | 3 4 5 8 | 698049 | NUCA1DPDDG | a9 | 3 4 6 8 |

UC WITH WATER SOFTENER

| Code | Type | Ref. | Pagina/ Page | Code | Type | Ref. | Pagina/ Page |
|--------|------------|------|--------------|--------|----------|------|--------------|
| 400037 | EUC1WS/2 | f4 | 3 4 6 7 8 | 400060 | EUC3WS | g5 | 3 4 6 7 8 |
| 400038 | EUC1DPWS/2 | f5 | 3 4 6 7 8 | 400062 | EUC3DPWS | g6 | 3 4 6 7 8 |
| 400044 | EUC3WS/2 | f6 | 3 4 6 7 8 | 400071 | ZUC3DPWS | g7 | 3 4 6 7 8 |
| 400047 | EUC3DPWS/2 | f7 | 3 4 6 7 8 | 400072 | ZUC3DDWS | g8 | 3 4 6 7 8 |
| 400048 | EUC3DDWS/2 | f8 | 3 4 6 7 8 | 400084 | VUCA3WSG | g9 | 3 4 6 7 8 |
| 400051 | ZUC1WS | f9 | 3 4 6 7 8 | 400142 | NUC1WS | h1 | 3 4 6 7 8 |
| 400052 | ZUC1DPWS | g1 | 3 4 6 7 8 | 400143 | NUC1DPWS | h2 | 3 4 6 7 8 |
| 400054 | ZUC3WS | g2 | 3 4 6 7 8 | 400145 | NUC3WS | h3 | 3 4 6 7 8 |
| 400057 | EUC1WS | g3 | 3 4 6 7 8 | 400147 | NUC3DPWS | h4 | 3 4 6 7 8 |
| 400058 | EUC1DPWS | g4 | 3 4 6 7 8 | 400148 | NUC3DDWS | h5 | 3 4 6 7 8 |

Pag./Page

| | |
|------|------------------------------------|
| 3 | Vista generale |
| 4 | Componenti idraulici |
| 5 | Circuito idraulico a pressione |
| 6 | Circuito idraulico atmosferico |
| 7 | Circuito idraulico con addolcitore |
| 8 | Componenti elettrici |
| 9-18 | Lista ricambi |
| 18 | KIT manutenzione annuale |

Marchio/Brand:

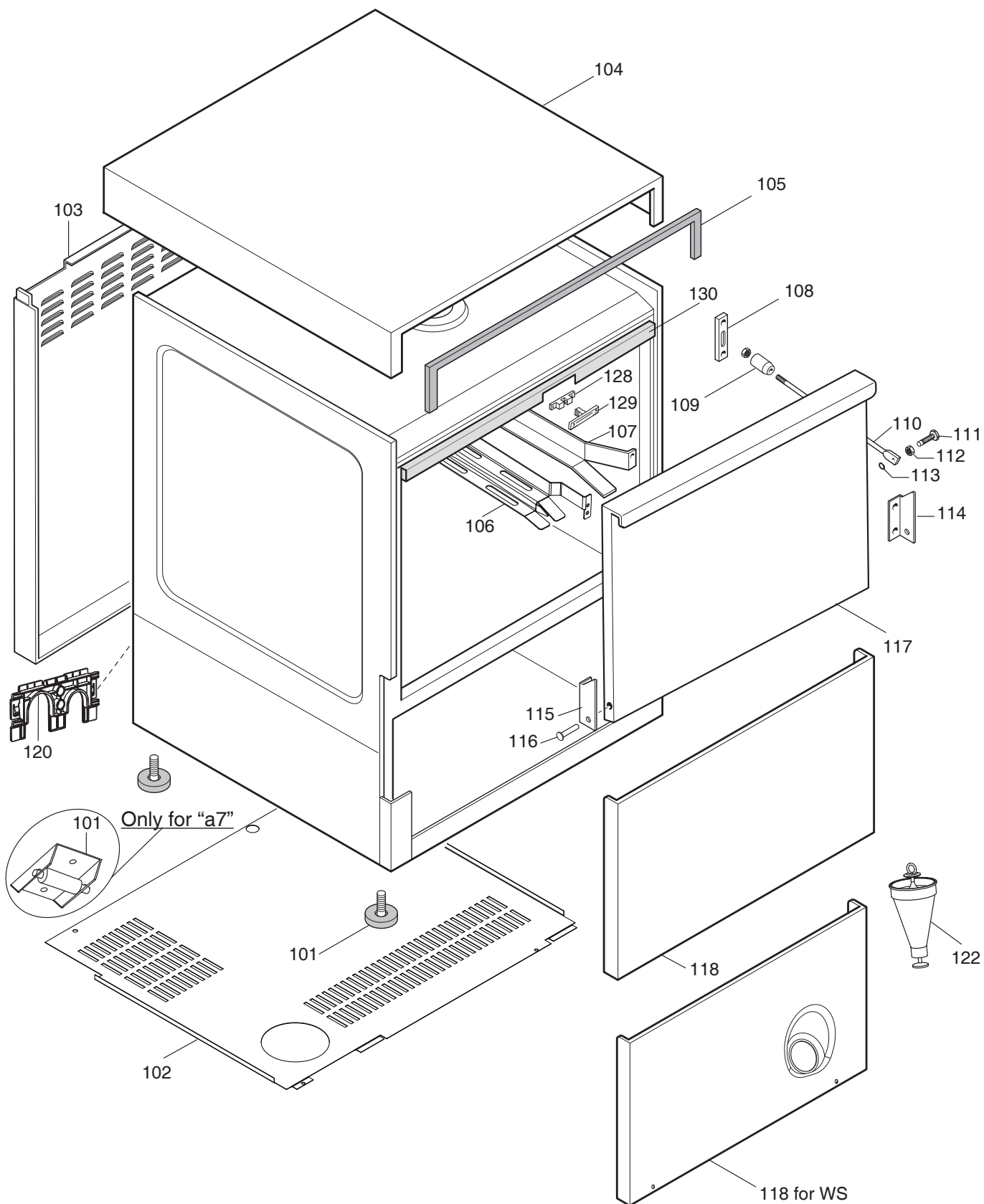
Z - A - E

Paese/Country:

Tutti/All

Index

| |
|----------------------------------|
| Main view |
| Hydraulic components |
| Pressurized plumbing circuit |
| Atmospheric plumbing circuit |
| Water softener hydraulic circuit |
| Electrical components |
| Spare parts list |
| Yearly maintenance KIT |

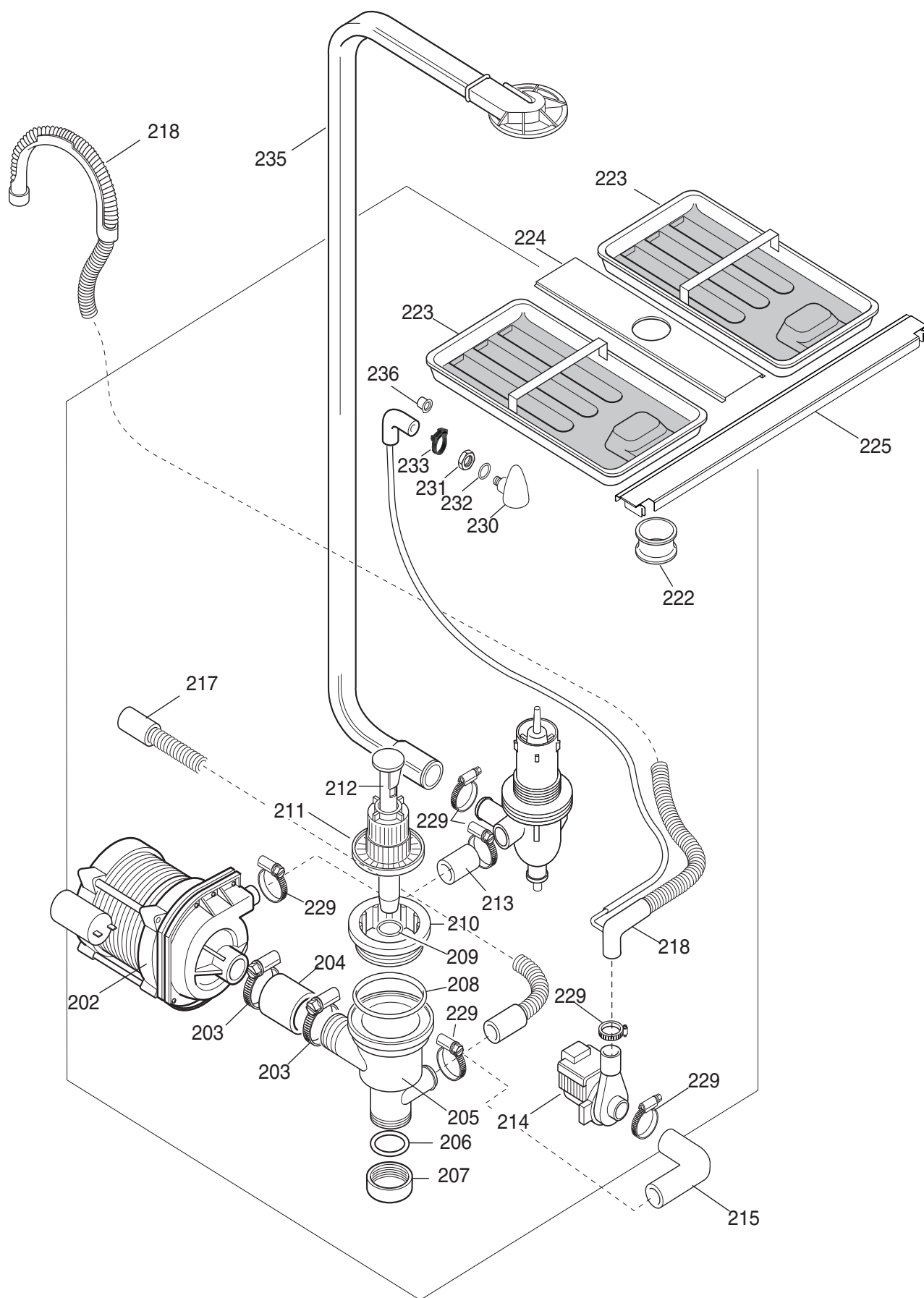


Vista generale / Main View

Doc. Nr.: **59566UZ00**

Ed. 2020.06
Updated 2021.06

Da Ser. Nr./ From Ser.nr.: 839...

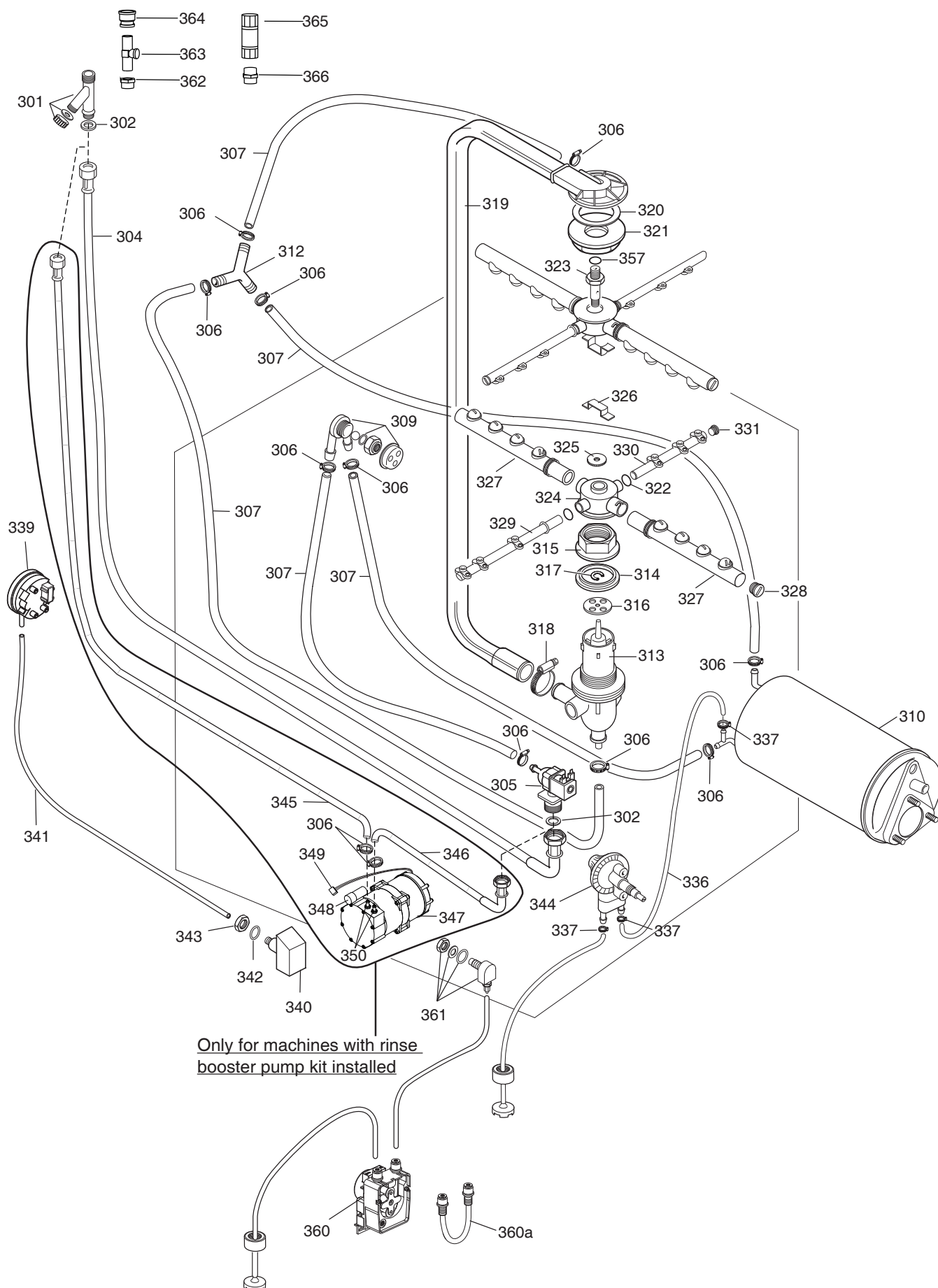


Componenti idraulici / Hydraulic components

Doc. Nr.: **59566UZ00**

Ed. 2020.06
Updated 2021.06

Da Ser. Nr./ From Ser.nr.: 839...

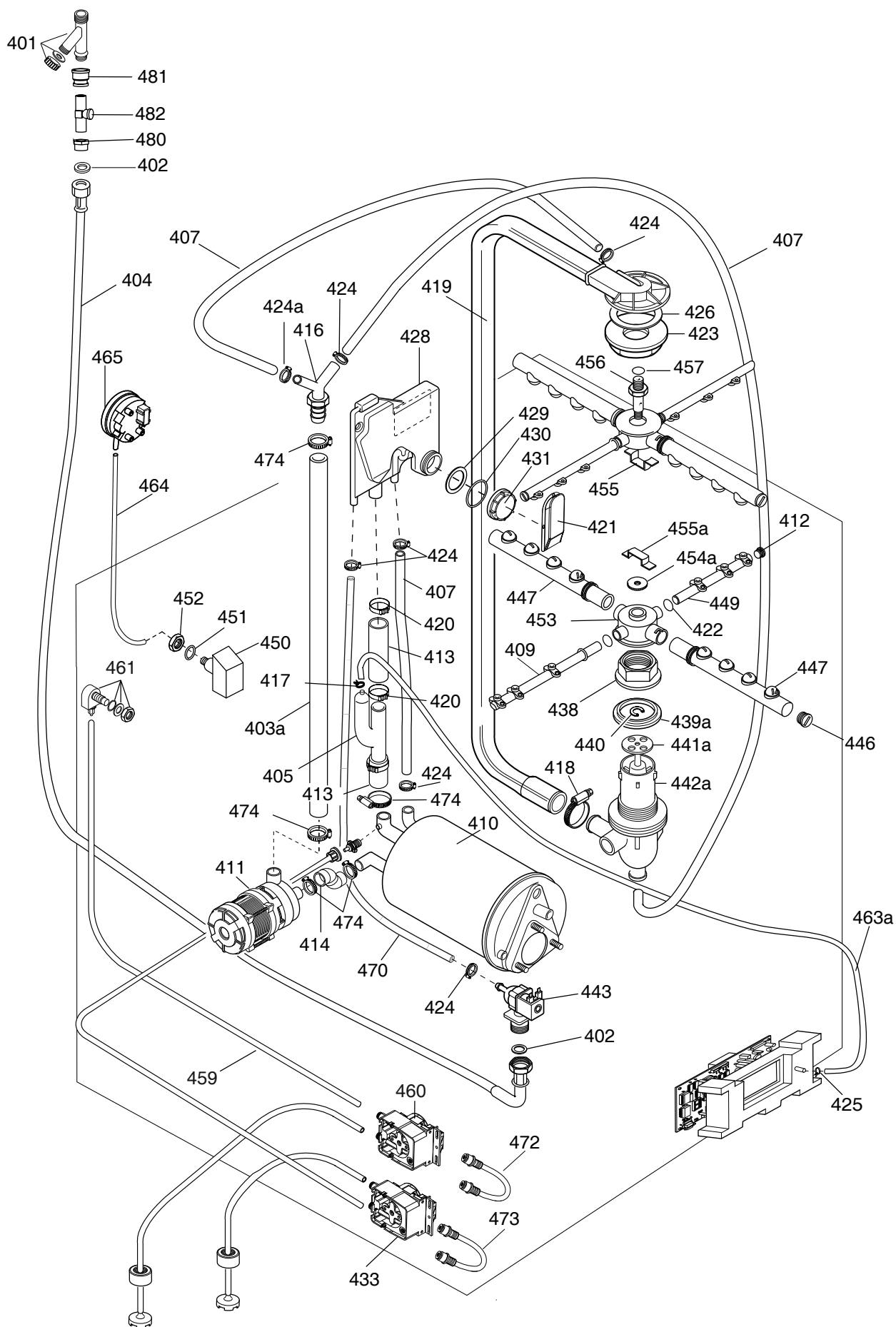


Circuito idraulico a pressione / Pressurized plumbing circuit

Doc. Nr.: **59566UZ00**

Ed. 2020.06
Updated 2021.06

Da Ser. Nr./ From Ser.nr.: 839...

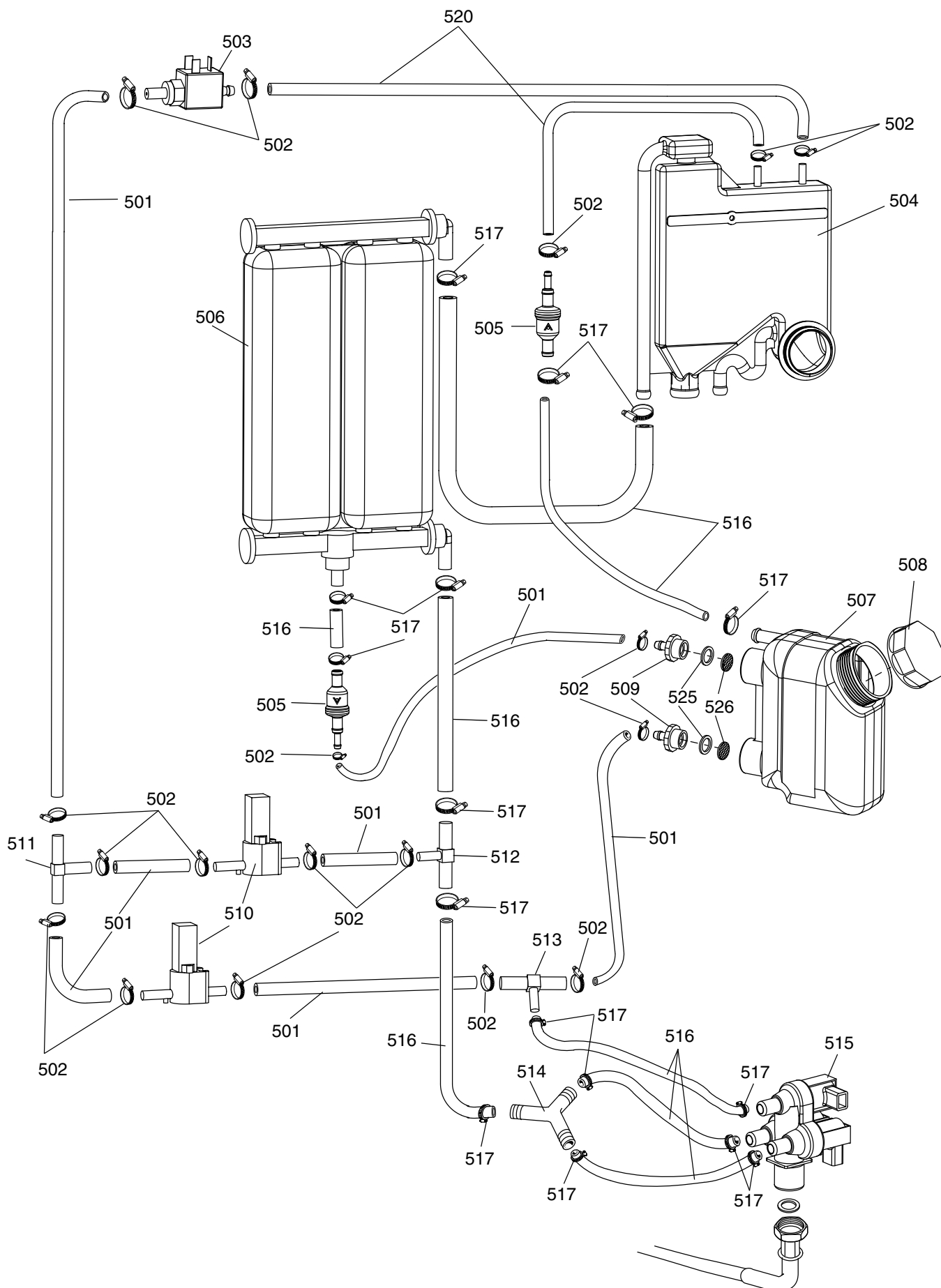


Circuito idraulico atmosferico / Atmospheric plumbing circuit

Doc. Nr.: **59566UZ00**

Ed. 2020.06
Updated 2021.06

Da Ser. Nr./ From Ser.nr.: 839...

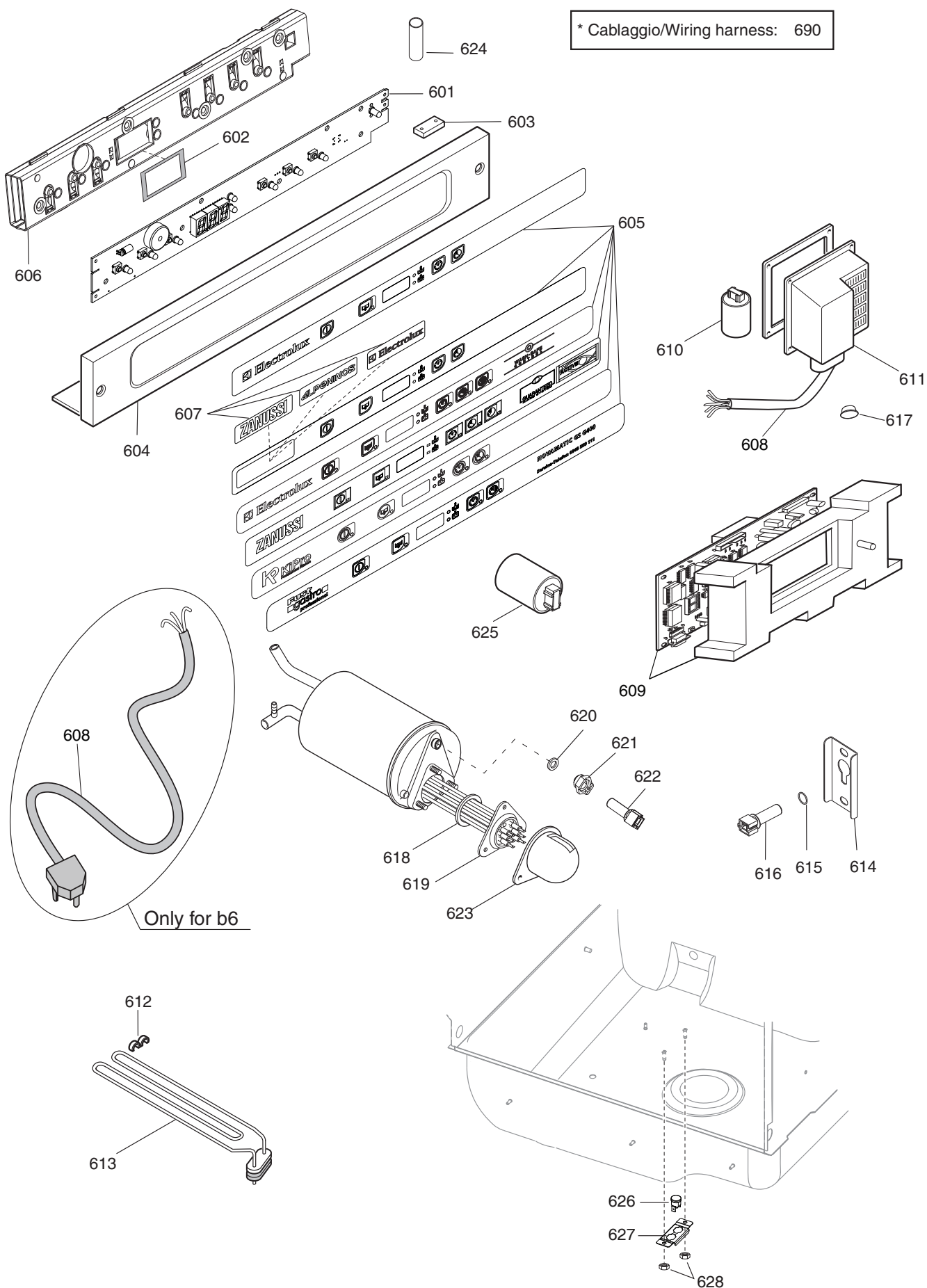


Circuito idraulico con addolcitore / Water softner hydraulic circuit

Doc. Nr.: **59566UZ00**

Ed. 2020.06
Updated 2021.06

Da Ser. Nr./ From Ser.nr.: 839...



Componenti elettrici / Electrical components

Doc. Nr.: **59566UZ00**

Ed. 2020.06
Updated 2021.06

Da Ser. Nr./ From Ser.nr.: 839...

| LAVASTOVIGLIE SOTTOTAVOLO NUC/ EUC/ KUC/ NUCA/ ZUCA/ FUCA/ EUCA UNDERCOUNTER DISHWASHER NUC/ EUC/ KUC/ NUCA/ ZUCA/ FUCA/ EUCA | | | | Grassetto = variazioni Bold Print = changes |
|--|-----------------------|-----------------------------------|--------------------------|--|
| Pos. | Cod. Ric. Part No. | Descrizione | Description | Note / Notes |
| | | Pagina 3: Vista generale | Page 3: Main view | |
| 101 | 048994 | Piedino marine | Marine foot | b9 |
| 101 | 049393 | Piedino regolabile | Adjustable foot | |
| 101 | 0L0118 | Piede a rullo | Roller | a7 |
| 102 | 0L2434 | Fondo | Bottom panel | From Ser. Nr.: 048 |
| 102 | 0TT903 | Fondo | Bottom panel | Up to Ser. Nr.: 047 |
| 103 | 0L1888 | Schienale | Rear panel | Not for s,t,v,z,a1,a2,a3,a4,a5, a9,b1,b7 Up to Ser. Nr.: 012 |
| 103 | 0L1889 | Schienale | Rear panel | Not for z,a9,b7 From Ser. Nr.: 013 Up to Ser. Nr.: 029 |
| 103 | 0L2070 | Schienale | Rear panel | s,t,v,z,a1,a2,a3,a4,a5,a9,b1,b7 Up to Ser. Nr.: 012 |
| 103 | 0L2433 | Schienale | Rear panel | z,a9,b7,c8,d9 From Ser. Nr.: 013 |
| 103 | 0L2567 | Schienale | Rear panel | Not for z,a9,b7 From Ser. Nr.: 030 |
| 104 | 0L0122 | Coperchio | Top panel | Up to Ser. Nr.: 012 |
| 104 | 0L0257 | Coperchio | Top panel | From Ser. Nr.: 013 |
| 105 | 046583 | Guarnizione | Gasket | |
| 106 | 0L2565 | Supporto cesto destro | Right basket support | a3,a6,c9,d9,f3 |
| 106 | 0L2566 | Supporto cesto sinistro | Left basket support | a3,a6,c9,d9,f3 |
| 107 | 049272 | Supporto cesto destro | Right basket support | Not for r,a3,a6,c9,d9 Up to Ser. Nr.: 012 |
| 107 | 049273 | Supporto cesto sinistro | Left basket support | Not for r,a3, a6,c9,d9 Up to Ser. Nr.: 012 |
| 107 | 0L2254 | Supporto cesto destro | Right basket support | Not for r,a3,a6,c9,d9,f3 From Ser. Nr.: 013 |
| 107 | 0L2252 | Supporto cesto sinistro | Left basket support | Not for r,a6,c9,d9,f3 From Ser. Nr.: 013 |
| 108 | 049285 | Placca | Plate | |
| 109 | 049286 | Ammortizzatore | Absorber | |
| 110 | 049282 | Tirante | Tie rod | |
| 111 | 049283 | Perno per tirante | Pin, for tie rod | |
| 112 | 049372 | Dado autobl. basso | Locking nut, flat | |
| 113 | 049284 | Anello seger | C-Clamp | |
| 114 | 049279 | Cerniera destra | Right hinge | Up to Ser. Nr.: 012 |
| 114 | 0L2253 | Cerniera destra | Right hinge | From Ser. Nr.: 013 |
| 115 | 049280 | Cerniera sinistra | Left hinge | Up to Ser. Nr.: 012 |
| 115 | 0L2251 | Cerniera sinistra | Left hinge | From Ser. Nr.: 013 |
| 116 | 049281 | Perno cerniera | Hinge pin | Up to Ser. Nr.: 012 |
| 116 | 0L2255 | Perno cerniera | Hinge pin | From Ser. Nr.: 013 |
| 117 | 049951 | Porta | Door | Up to Ser. Nr.: 920 |
| 117 | 0L2068 | Porta | Door | From Ser. Nr.: 921 |
| 118 | 0L1649 | Pannello frontale | Front panel | Not for WS models Up to Ser. Nr.: 029 |
| 118 | 0L2568 | Pannello frontale | Front panel | Not for WS models From Ser. Nr.: 030 |
| Doc. Nr.: 59566UZ00 | | Ed. 2020.06 Updated 2022.10 | | |
| | | Da Ser. Nr./ From Ser.nr.: 839... | | |

LAVASTOVIGLIE SOTTOTAVOLO NUC/ EUC/ KUC/ NUCA/ ZUCA/ FUCA/ EUCA
UNDERCOUNTER DISHWASHER NUC/ EUC/ KUC/ NUCA/ ZUCA/ FUCA/ EUCA

Grassetto = variazioni
Bold Print = changes

| Pos. | Cod. Ric. Part No. | Descrizione | Description | Note / Notes |
|---------------------------------------|-----------------------|----------------------------|-------------------------------------|---|
| 118 | 0L1668 | Pannello frontale | Front panel | For WS models |
| 119 | 047551 | Coperchio vaschetta | Container lid | |
| 120 | 0L0112 | Copertura passatubi | Hoses protection | |
| 122 | 047604 | Misurino sale | Salt funnel | |
| 128 | 049271 | Scrocchetto | Snap catch | |
| 129 | 049536 | Nasello | Door-stop | |
| 130 | 0L0021 | Guarnizione | Gasket | |
| Pagina 4: Componenti idraulici | | | Page 4: Hydraulic components | |
| 202 | 0L0126 | Pompa Lavaggio | Wash pump | Not for "i,q,a2,a4,b1" - 50Hz i,q,a2,a4,b1,b9,d1,d2 - 60Hz |
| 202 | 0L0562 | Pompa Lavaggio | Wash pump | |
| 203 | 0L0193 | Fascetta 40-60 | Hose clamp 40-60 | |
| 204 | 0L1374 | Tubo aspirazione pompa | Pump hose | |
| 205 | 048325 | Coll. Asp. Scarico | Drain manifold | |
| 206 | 049828 | Guarniz. Tappo Ter. Sc. | Gasket | |
| 207 | 046596 | Tappo Terminale Sc. | Plug; for manifold | |
| 208 | 049894 | OR 4*110 Asp Sc. | O Ring | |
| 209 | 046799 | OR Troppo Pieno | O Ring | |
| 210 | 048326 | Ghiera collettore Asp. Sc. | Ring nut; for manifold | |
| 211 | 048324 | Filtro Aspirazioene pompa | Filter; for pump | |
| 212 | 048323 | Troppo pieno | Overflow pipe | |
| 212 | 048842 | Troppo pieno | Overflow pipe | a,b,f,h,m,s,t,b2,b4,c2,c4,d3, d5,e1,e2,e7,f2,f4,f6,f9,g2,g3, g5,h1,h3 c,d,e,g,n,o,k,r,i,q,w,x,v,z,a1,a2, a3,a4,a5,a6,a7,a8,a9,b1,b3, b5,b6,b7,b8,c1,c3,c5,c6,c7,c8, c9,d1,d2,d4,d6,d7,d8,d9,e1, e3,e4,e5,e6,e8,e9,f3,f5,f7,f8, g1,g4,g6,g7,g8,g9,h2,h4,h5 |
| 213 | 0L0259 | Tubo Gomma 37x52 | Hose | 50hz - c,d,e,g,n,o,k,r,w,x,v,z, a1,a3,a5,a6,a7,a8,a9,b3,b5,b6,b 7,b8,g4,g6,h2,h4,h5 Up to Ser. Nr.: 144 |
| 214 | 0L0994 | Pompa scarico | Drain pump | |
| 214 | 0L2133 | Pompa scarico | Drain pump | 50hz c,d,e,g,n,o,k,r,w,x,v,z,a1,a3, a5,a6,a7,a8,a9,b3,b5,b6,b7, b8,c1,c3,c5,c6,c7,c8,c9,d4,d6, d7,d8,d9,e3,e4,e5,e6,e8,f3, f5,f7,f8,g1,g4,g6,g7,g8,g9, h2,h4,h5 From Ser. Nr.: 145 |
| 214 | 0L1131 | Pompa scarico | Drain pump | 60hz i,q,a2,a4,b1 Up to Ser. Nr.: 144 |
| 214 | 0L2133 | Pompa scarico | Drain pump | 60hz i,q,a2,a4,b1,d1,d2,e9 From Ser. Nr.: 145 |

| LAVASTOVIGLIE SOTTOTAVOLO NUC/ EUC/ KUC/ NUCA/ ZUCA/ FUCA/ EUCA UNDERCOUNTER DISHWASHER NUC/ EUC/ KUC/ NUCA/ ZUCA/ FUCA/ EUCA | | | | Grassetto = variazioni Bold Print = changes |
|--|-----------------------|---|--------------------------------------|---|
| Pos. | Cod. Ric. Part No. | Descrizione | Description | Note / Notes |
| 215 | 049877 | Manicotto asp scarico | Coupling; drain | c,d,e,f,g,k,i,n,o,q,r,w,v,x,z,a1,a2,a3,a4,a5,a6,a7,a8,a9,b1,b2,b3,b4,b5,b6,b7,b8,c1,c2,c3,c5,c6,c7,c8,c9,d1,d2,d3,d4,d6,d7,d8,d9,e1,e3,e4,e5,e6,e7,e8,e9,f3,f5,f7,f8,g1,g4,g6,g7,g8,g9,h2,h4,h5 |
| 217 | 0L4552 | Tubo Scarico | Drain pipe | a,b,f,h,m,s,t,b2,b4,c2,c4,d3,d5,e1,e2,e7,f2,f4,f6,f9,g2,g3,g5,h1,h3 |
| 218 | 049878 | Tubo Scarico | Drain pipe | c,d,e,g,n,o,k,i,q,r,w,x,v,z,a1,a2,a3,a4,a5,a6,a7,a8,a9,b1,b3,b5,b6,b7,b8,c1,c3,c5,c6,c7,c8,c9,d1,d2,d4,d6,d7,d8,d9,e3,e4,e5,e6,e8,e9,f3, f5,f7,f8,g1,g4,g6,g7,g8,g9,h2,h4,h5 |
| 222 | 0L0078 | Supporto Filtro | Filter support | z,a1,a2,a3,a4,a6,a9,b1,b7,c8,c9,d9,e5,e6,e8,e9,f1,f3 |
| 223 | 049908 | Filtro Vasca | Tank filter | z,a1,a2,a3,a4,a6,a9,b1,b7,c8,c9,d9,e5,e6,e8,e9,f1,f3 |
| 224 | 0L2431 | Supporto Centrale filtri | Central support for filters | z,a1,a2,a3,a4,a6,a9,b1,b7,c8,c9,d9,e5,e6,e8,e9,f1,f3 |
| 225 | 0L2430 | Supporto Anteriore filtri | Front support for filters | z,a1,a2,a3,a4,a6,a9,b1,b7,c8,c9,d9,e5,e6,e8,e9,f1,f3 |
| 229 | 046878 | Fascetta 35-50 | Hose clamp 35-50 | Up to Ser: 2014-49 for products w/o WS Always for WS products |
| 230 | 048853 | Nasello per vasca | Spigot; air relief | |
| 231 | 049268 | Dado ES.M14X1,5 | Nut; M14x1,5 | |
| 232 | 068642 | OR 3062; 2,62X15,54 | O Ring | |
| 233 | 046946 | Fasc. Torro. W2 8-12/7,5 IVP | Hose clamp 8-12 | |
| 233 | 0L3522 | Fasc. in plastica con crichetto | Herbie Clip nylon hose clamp | From Ser: 2014-50 except for WS products |
| 235 | 0L0125 | Tubo Lavaggio | Wash pipe | Not for a,b,d,q,a5,b5,c2,c4,d1,d3,d5,d6,d8,d9,e2 |
| 236 | 049849 | Tappo ingresso det. | Plug inlet det. | |
| Pagina 5: Circuito idraulico a pressione | | | Page 5: Pressurized plumbing circuit | Not for s,t,v,z,a1,a2,a3,a4,a5,a9,b1,b7,c8,e5,e8,e9,f1 and WS products |
| 301 | 048834 | Assieme filtro | Filter assembly | Up to Ser. Nr.: 920 From Ser. Nr.: 921 e7 |
| 302 | 0L1945 | Guarnizione | Gasket | |
| 304 | 0L1887 | Tubo alimentazione | Supply pipe | |
| 305 | 048817 | Elettrovalvola | Electrovalve | |
| 306 | 048126 | Fascetta 13-20 | Hose clamp 13-20 | |
| 307 | 048531 | Tubo | Hose | |
| 309 | 0L1892 | Valvola DVGW, compl. | DVGW Valve, compl. | |
| 310 | 0L1890 | Boiler | Boiler | |
| 310 | 0L0352 | Boiler | Boiler | |
| 310 | 0L1982 | Boiler | Boiler | |
| 312 | 048195 | Raccordo 3 vie | 3 way connection | |
| Doc. Nr.: 59566UZ00 | | Ed. 2020.06 Updated 2022.10 Da Ser. Nr./ From Ser.nr.: 839... | | |

| LAVASTOVIGLIE SOTTOTAVOLO NUC/ EUC/ KUC/ NUCA/ ZUCA/ FUCA/ EUCA UNDERCOUNTER DISHWASHER NUC/ EUC/ KUC/ NUCA/ ZUCA/ FUCA/ EUCA | | | | Grassetto = variazioni Bold Print = changes |
|--|-----------------------|--|---|--|
| Pos. | Cod. Ric. Part No. | Descrizione | Description | Note / Notes |
| 313 | 049290 | Supporto getti, inferiore | Jets support, lower | |
| 314 | 048236 | Guarnizione | Gasket | |
| 315 | 048330 | Ghiera, fiss. supporto getti | Ring nut, jets support locking | |
| 316 | 048820 | Parzializzatore | Flow reducer | |
| 317 | 048979 | Anello | O-ring | |
| 318 | 046878 | Fascetta 38-50 | Hose clamp 38-50 | |
| 319 | 0L0125 | Tubo collegamento getti | Connection pipe for wash jets | |
| 320 | 0L0110 | Guarnizione Supp. Getti Sup. | Gasket | |
| 321 | 048824 | Ghiera | Ring nut | |
| 322 | 047473 | O-Ring 2056- 1,78x14,00 | O-Ring | |
| 323 | 049292 | Perno, per supporto getti | Pin, for jets support | |
| 324 | 049293 | Assieme mozzo, per getti | Hub assembly, for jets | |
| 325 | 047282 | Rondella di fermo | Lock washer | |
| 326 | 049294 | Protezione rondella | Washer bracket | |
| 327 | 049295 | Assieme getto di lavaggio | Wash jet assembly | |
| 328 | 049296 | Tappo, per getti lavaggio | Plug, for wash jets | |
| 329 | 049297 | Getto risciacquo, lungo | Rinse jet, long | |
| 330 | 049298 | Getto risciacquo, corto | Rinse jet, short | |
| 331 | 049299 | Tappo, per getti risciacquo corti | Plug, for short rinse jets | |
| 334 | 067292 | Guarnizione | Gasket | |
| 336 | 048883 | Tubo | Pipe | |
| 337 | 046946 | Fascetta 8-12 | Hose clamp 8-12 | |
| 339 | 049881 | Pressostato | Pressure switch | |
| 340 | 048308 | Trappola d'aria per pressost. | Air trap | |
| 341 | 049904 | Tubo | Hose | |
| 342 | 068642 | OR 2062x15.54 | O Ring | |
| 343 | 049268 | Dado M14x1.5 | Nut; M14x1,5 | |
| 344 | 0L0094 | Dosatore idraulico | Rinse aid dispenser | |
| 344 | 0L3182 | Dosatore idraulico | Rinse aid dispenser | |
| 344 | 0L4295 | Dosatore idraulico | Rinse aid dispenser | |
| 345 | 0L2394 | Tubo ingresso acqua | Water inlet pipe | |
| 346 | 0L2389 | Tubo uscita pompa | Pump outlet pipe | |
| 347 | 0L2391 | Pompa + condensatore | Pump + capacitor | |
| 348 | 049126 | Condensatore | Capacitor | |
| 349 | 0L2392 | Cavetto di terra | Ground cable | |
| 350 | 0L2393 | Portagomma G 3/8" M | Fitting G 3/8" M | |
| | 0L2390 | (Pompa + condensatore) + cavetto di terra+portagomma | (Pump + capacitor) + ground cable + fitting | |
| 357 | 047986 | O-Ring 2050 - 1,78x12,42 | O-Ring | |
| Doc. Nr.: 59566UZ00 | | | | Ed. 2020.06 Updated 2022.10 |
| | | | | Da Ser. Nr./ From Ser.nr.: 839... |

| LAVASTOVIGLIE SOTTOTAVOLO NUC/ EUC/ KUC/ NUCA/ ZUCA/ FUCA/ EUCA UNDERCOUNTER DISHWASHER NUC/ EUC/ KUC/ NUCA/ ZUCA/ FUCA/ EUCA | | | | Grassetto = variazioni Bold Print = changes |
|--|-----------------------|---|--------------------------------------|---|
| Pos. | Cod. Ric. Part No. | Descrizione | Description | Note / Notes |
| 360 | 0S2782 | Pompa detergente | Pump; detergent | a,b,d,h,j,k,o,q,r,s,t,v,y,z,a2,a4, a5,a7,b1,b4,b5,b7,b9,c1,c2, c3,c4,c6,c7,c8,d1,d6,d9,e2 |
| 360a | 0L5076 | Tubicino pompa detergente | Detergent pump rubber hose | a,b,d,h,j,k,o,q,r,s,t,v,y,z,a2,a4, a5,a7,b1,b4,b5,b7,b9,c1,c2, c3,c4,c7,c8,d1,d6,d9,e2 |
| 361 | 049801 | Iniettore detergente | Iniecton spigot | a,b,d,h,j,k,o,q,r,s,t,v,y,z,a2,a4, a5,a7,b1,b4,b5,b7,b9,c1,c2, c3,c4,c7,c8,d1,d6,d9,e2 |
| 362 | 0L0262 | Riduzione M.3/4" - F.1/2" | Adapter M.3/4" - F.1/2" | w,x,c7,d8,e4 From Ser. Nr.: 014 |
| 363 | 0L0264 | Valvola di non ritorno | No back-flow valve | w,x,c7,d8,e4 From Ser. Nr.: 014 |
| 364 | 0L0263 | Manicotto F.3/4"- F.1/2" | Coupling F.3/4" - F.1/2" | w,x,c7,d8,e4 From Ser. Nr.: 014 |
| 365 | 0L2980 | Doppia valvola di non ritorno | Double no back-flow valve | a6,c9,d9,f3 - From Ser. Nr. 316 |
| 366 | 072457 | Raccordo M.3/4" - M.3/4" | Coupling M.3/4"- M.3/4" | a6,c9,d9,f3 - From Ser. Nr. 316 |
| Pagina 6: Circuito idraulico atmosferico | | | Page 6: Atmospheric plumbing circuit | Only for s,t,v,z,a1,a2,a3,a4, a5,a9,b1,b7,c8,e5,e8,e9,f1 and WS products |
| 401 | 048834 | Assieme filtro | Filter assembly | 660 mm |
| 402 | 0L1945 | Guarnizione | Gasket | |
| 403 | 049773 | Tubo Ø 26x37 | Pipe Ø 26x37 | |
| 404 | 0L1887 | Tubo alimentazione | Feed hose | |
| 405 | 0L0098 | Trappola d'aria | Air trap | |
| 407 | 048531 | Tubo | Hose | |
| 409 | 049297 | Getto risciacquo, lungo | Rinse jet, long | |
| 410 | 0L1891 | Boiler | Boiler | |
| 410 | 0L0351 | Boiler | Boiler | |
| 411 | 0L2597 | Pompa risciacquo | Rinse pump | |
| 411 | 0L2598 | Pompa risciacquo | Rinse pump | Up to Ser. Nr: 920 From Ser. Nr: 921 Not for "a2,a4,b1"- 50 Hz a2,a4,b1 - 60 Hz |
| 412 | 049299 | Tappo per getti risciacquo | Pipe for rinse jet | |
| 413 | 0L4453 | Tubo Ø 25,5X32 | Pipe Ø 25,5X32 | |
| 414 | 0L2064 | Manicotto aspirazione | Suction hose | |
| 416 | 0L0365 | Raccordo 3 vie | 3 way connection | |
| 417 | 0L0083 | Fascetta 9,3/9,9 | Hose clamp 9,3/9,9 | |
| 418 | 046878 | Fascetta 38-50 | Hose clamp 38-50 | |
| 419 | 0L0125 | Tubo collegamento getti | Connection pipe for wash jets | |
| 420 | 0L0367 | Fascetta Cobra | Hose clamp | |
| 421 | 0L2560 | Protezione ghiera | Guard ring nut | |
| 422 | 047473 | OR 2056- 1,78x14,00 | O Ring | |
| 423 | 048824 | Ghiera | Ring nut | |
| 424 | 048126 | Fascetta 12-22 | Hose clamp 12-22 | |
| 425 | 0L0082 | Fascetta Ø 7,3/7,8 | Hose clamp Ø 7,3x7,8 | |
| 426 | 0L0110 | Guarnizione | Gasket | |
| 428 | 0L2666 | Air Gap | Air Gap | s,t,v,a1,a2,a3,a4,a5,b1,e5,e8,e9 |
| 428 | 0L2435 | Air Gap UK | Air Gap UK | z,a9,b7,c8 |
| Doc. Nr.: 59566UZ00 | | Ed. 2020.06 Updated 2022.10 Da Ser. Nr./ From Ser.nr.: 839... | | |

| LAVASTOVIGLIE SOTTOTAVOLO NUC/ EUC/ KUC/ NUCA/ ZUCA/ FUCA/ EUCA UNDERCOUNTER DISHWASHER NUC/ EUC/ KUC/ NUCA/ ZUCA/ FUCA/ EUCA | | | | Grassetto = variazioni Bold Print = changes |
|--|-----------------------|---|--------------------------------|---|
| Pos. | Cod. Ric. Part No. | Descrizione | Description | Note / Notes |
| 428 | 0L0268 | Air Gap | Air Gap | WS products Up to Ser. Nr.: 6030 |
| 428 | 0L2474 | Air Gap | Air Gap | |
| 429 | 049828 | Guarnizione | Gasket | WS products From Ser. Nr.: 6040 |
| 430 | 049460 | OR 3212-2,62x53,65 | O Ring | |
| 431 | 049480 | Ghiera per Air Gap | Air Gap nut | Up to Ser: 2014-19 t,v,a3,a4,a5,b7 |
| 433 | 0L0697 | Pompa peristaltica brillantante | Pump; rinse aid | |
| 433 | 0S1713 | Pompa peristaltica brillantante | Pump; rinse aid | From Ser: 2014-20 Up to Ser: 2016-13 t,v,z,a1,a2,a3,a4,a5,b1,b7,e8, e9 and WS products |
| 433 | 0S2787 | Pompa peristaltica brillantante | Pump; rinse aid | From Ser: 2016-14 t,v,z,a1,a2,a3,a4,a5,b1,b7,c8,e5, e8,e9 and WS products |
| 438 | 048330 | Ghiera, fiss. supporto getti | Ring nut, jets support locking | s,t,v,a1,a2,a3,a4,a5,b1,e5,e8, e9 |
| 439 | 048236 | Guarnizione | Gasket | |
| 440 | 048979 | Anello seger | C-Clamp | z,a9,b7,c8,f1 |
| 441 | 048820 | Parzializzatore | Flow reducer | |
| 442 | 049290 | Supporto getti, inferiore | Jets support, lower | For WS products |
| 443 | 0L3448 | Elettrovalvola 10 l/min | Electrovalve 10 l/min | |
| 443 | 0L3443 | Elettrovalvola 5.5 l/min | Electrovalve 5.5 l/min | Up to Ser: 2014-19 v,z,a1,a2,a3,a4,a9,b1,b7 |
| 443 | 0L3444 | Elettrovalvola | Electrovalve | |
| 446 | 049296 | Tappo, per getti lavaggio | Plug, for wash jets | From Ser: 2014-20 Up to 2015-50 v,z,a1,a2,a3, a4,a9,b1,b7,c8,e5,e8,e9, f8,g8,g9,h5 |
| 447 | 049295 | Assieme getto di lavaggio | Wash jet assembly | |
| 449 | 049298 | Getto risciacquo, corto | Rinse jet, short | From 2015-51 v,z,a1,a2,a3,a4,a9,b1,b7,c8, e5,e8,e9,f8,g8,g9,h5 |
| 450 | 048308 | Trappola d'aria per pressost. | Air trap | |
| 451 | 068642 | OR 2062x15.54 | O Ring | v,z,a1,a2,a3,a4,a9,b1,b7,c8,e5, e8,e9,g9,h5 |
| 452 | 049268 | Dado M14x1.5 | Nut; M14x1,5 | |
| 453 | 049293 | Assieme mozzo, per getti | Hub assembly, for jets | |
| 454 | 047282 | Rondella di fermo | Lock washer | |
| 455 | 049294 | Protezione rondella | Washer bracket | |
| 456 | 049292 | Perno, per supporto getti | Pin, for jets support | |
| 457 | 047986 | O-Ring 2050 - 1,78x12,42 | O-Ring | |
| 459 | 0L1163 | Tubo mandata; rigido | Delivery hose; rigid | |
| 460 | 0L0696 | Pompa detergente | Pump; detergent | Up to Ser: 2014-19 v,z,a1,a2,a3,a4,a9,b1,b7 |
| 460 | 0S1711 | Pompa detergente | Pump; detergent | |
| 460 | 0S2782 | Pompa peristaltica detergente | Pump; Detergent | From 2015-51 v,z,a1,a2,a3,a4,a9,b1,b7,c8, e5,e8,e9,f8,g8,g9,h5 |
| 461 | 049801 | Iniettore detergente | Injection spigot | v,z,a1,a2,a3,a4,a9,b1,b7,c8,e5, e8,e9,g9,h5 |
| 463 | 072393 | Tubo Ø 4x7,4 | Hose Ø 4x7,4 | |
| 464 | 049904 | Tubo | Hose | |
| Doc. Nr.: 59566UZ00 | | Ed. 2020.06 Updated 2022.10 Da Ser. Nr./ From Ser.nr.: 839... | | |

LAVASTOVIGLIE SOTTOTAVOLO NUC/ EUC/ KUC/ NUCA/ ZUCA/ FUCA/ EUCA
UNDERCOUNTER DISHWASHER NUC/ EUC/ KUC/ NUCA/ ZUCA/ FUCA/ EUCA

Grassetto = variazioni
Bold Print = changes

| Pos. | Cod. Ric. Part No. | Descrizione | Description | Note / Notes |
|---|-----------------------|-------------------------------------|---|--|
| 465 | 049881 | Pressostato | Pressure switch | |
| 470 | 048531 | Tubo EPDM 12x19.5 | Hose 12x19.5 | s,t,v,a1,a2,a3,a4,a5,b1,e5,e8, e9 |
| 470 | 049379 | Tubo 12x19.5 WRC | Hose 12x19.5 WRC | z,a9,b7,c8 |
| 472 | 0L5076 | Tubo; interno, pompa deterg. | Hose; internal detergent pump | From 2015-51 v,z,a1,a2,a3,a4,a9,b1,b7,c8, e5,e8,e9,f8,g8,g9,h5 |
| 473 | 0L5079 | Tubo; interno, pompa brill. | Hose; internal rinse aid pump | From Ser: 2016-14 t,v,z,a1,a2,a3,a4,a5,b1,b7,c8,e5, e8,e9 and WS products |
| 474 | 047578 | Fascetta Ø 25/40 | Hose clamp Ø 25/40 | |
| 480 | 0L0262 | Riduzione M.3/4" - F.1/2" | Adapter M.3/4" - F.1/2" | For WS products |
| 481 | 0L0263 | Manicotto F.3/4"- F.1/2" | Coupling F.3/4"- F.1/2" | For WS products |
| 482 | 0L0264 | Doppia valvola di non ritorno | Double check valve | For WS products |
| Pagina 7: Circuito idraulico con addolcitore | | | Page 7: Water softener hydraulic circuit | For WS products |
| 501 | 0L0265 | Tubo d=8x15 mm | Hose d=8x15 mm | |
| 502 | 0L0266 | Fascetta torro 10-16/7,5 | Hose clamp 10-16/7,5 | |
| 503 | 0L0267 | Pompa a solenoide | Solenoid pump | |
| 504 | 0L0268 | Air Gap | Air Gap | |
| 505 | 0L0269 | Valvola di non ritorno | No back-flow valve | |
| 506 | 0L0270 | Addolcitore | Water softener | |
| 507 | 0L0271 | Boccia del sale | Salt container | |
| 508 | 0L0272 | Tappo boccia sale | Salt container cap | |
| 509 | 049026 | Portagomma | Pipeholder | |
| 510 | 0L0273 | Elettrovalvola a bassa pressione | Low pressure electrovalve | |
| 511 | 0L0274 | Raccordo a T TS7-7-7 | T-connection TS7-7-7 | |
| 512 | 0L0275 | Raccordo a T TRS10-6-10 | T-connection TRS10-6-10 | |
| 513 | 0L0276 | Raccordo a T TRS 8-12-8 | T-connection TRS 8-12-8 | |
| 514 | 048195 | Raccordo a 3 vie D.12 YS1 | 3 way connection D.12 YS1 | |
| 515 | 0L0260 | Elettrovalvola | Electrovalve | |
| 516 | 048531 | Tubo | Hose | |
| 517 | 048126 | Fascetta 12-22 | Hose clamp 12-22 | |
| 520 | 0L2661 | Tubo | Hose | 450mm |
| 525 | 0L0119 | O-Ring | O-Ring | |
| 526 | 049022 | Filtro portagomma | Pipeholder filter | |
| Pagina 8: Componenti elettrici | | | Page 8: Electrical components | |
| 601 | 0L3875 | Interfaccia utente | User Interface | Up to Ser. Nr.: 2019/10 |
| 601 | 0L4473 | Interfaccia utente | User Interface | From Ser. Nr. : 2019/11 |
| 602 | 0L1943 | Guarnizione display | Display gasket | |
| 603 | 0L1871 | Sensore reed | Sensor | |
| 604 | 0L1667 | Cruscotto | Control panel | Not for s,t,a1,a2,a3,a4,a5, b1,e8,e9 |
| 604 | 0L2069 | Cruscotto | Control panel | s,t,a1,a2,a3,a4,a5,b1,e5,e8,e9 |

| LAVASTOVIGLIE SOTTOTAVOLO NUC/ EUC/ KUC/ NUCA/ ZUCA/ FUCA/ EUCA UNDERCOUNTER DISHWASHER NUC/ EUC/ KUC/ NUCA/ ZUCA/ FUCA/ EUCA | | | | Grassetto = variazioni Bold Print = changes |
|--|-----------------------|--|--|--|
| Pos. | Cod. Ric. Part No. | Descrizione | Description | Note / Notes |
| 604 | 0L4306 | Cruscotto Veetsan | Veetsan Control panel | e1,e2,e3,e4,e5,g9 |
| 605 | 0L1663 | Membrana adesiva neutra | Neutral stick membrane | f,g,h,o,k,q,r,x,z,a6,a8,a9,b2, b3,b4,b5,b7,c1b6,b7,b8 up to 7431 |
| 605 | 0L4187 | Membrana Caterwash | Caterwash stick membrane | b6,b7,b8 from 7441 |
| 605 | 0L1661 | Membrana adesiva - Electrolux | Membrane - Electrolux | a,b,c,d,e,w,a7,b1 up to 6131 |
| 605 | 0L3700 | Membrana adesiva - Electrolux | Membrane - Electrolux | From 6141 a7,b1,b9,c2,c4,c5, c6,c7,c9,d1,d3,d5,d6,d7,d8, e1,e6,e7,f2 |
| 605 | 0L1650 | Membrana adesiva - Electrolux | Membrane - Electrolux | a3,a4,a5 up to 6131 |
| 605 | 0L3691 | Membrana adesiva - Electrolux | Membrane - Electrolux | a3,a4,a5,e8,e9 from 6141 |
| 605 | 0L3797 | Membrana adesiva atmosferica - Electrolux | Atmospheric Membrane - Elec- trolux | c8,d2,d9 |
| 605 | 0L1653 | Membrana adesiva - Zanussi | Membrane - Zanussi | s,t,a1,a2 |
| 605 | 0L3795 | Membrana adesiva Zanussi ATM | Membrane Zanussi ATM | f1 |
| 605 | 0L3794 | Membrana adesiva - Zanussi LS5 Press. | Membrane - Zanussi LS5 | d8,d9 |
| 605 | 0L2388 | Membrana adesiva - Fust | Membrane - Fust | v |
| 605 | 0L2142 | Membrana adesiva - Kipro | Membrane - Kipro | m,n |
| 605 | 0L4302 | Membrana adesiva - Veetsan Star | Membrane - Veetsan Star | e1,e2,e3,e4,f3 |
| 605 | 0L4303 | Membrana adesiva - Veetsan Star | Membrane - Veetsan Star | e5 |
| 605 | 0L1662 | Membrana adesiva Zanussi | Membrane Zanussi | h1,h2,h3,h4,h5 |
| 605 | 0L1660 | Membrana adesiva Electrolux | Membrane Electrolux | g3,g4,g5,g6 |
| 605 | 0L3796 | Membrana adesiva Electrolux ATM+WS | Membrane Electrolux | f4,f5,f6,f7,f8 |
| 605 | 0L3793 | Membrana adesiva Zanussi AT- M+WS | Membrane Electrolux | f9,g1,g2,g7,g8 |
| 605 | 0L4332 | Membrana adesiva Veetsan AT- M+WS | Membrane Veetsan ATM+WS | g9 |
| 606 | 0L1567 | Copertura interfaccia utente | User interface cover | |
| 607 | 0L1664 | Adesivo Zanussi | Sticker Zanussi | |
| 607 | 0L1665 | Adesivo Alpeninox | Sticker Alpeninox | |
| 607 | 54864AK00 | Adesivo Electrolux | Sticker Electrolux | |
| 608 | 0L2055 | Cavo H07RNF 3x2,5MMQ | Pipe H07RNF 3x2,5MMQ | a,c,f,g,i,q,w,x,a6,a8,b2,b3,b4, b5,b6,b8, c2,c3,c7,c9,d1,d2, d3,d4,d8,e1,e4,e7,f3 |
| 608 | 0L0024 | Cavo H07RNF 3x2,5MMQ | Pipe H07RNF 3x2,5MMQ | s,a5,f4,f9,g1,g3,g4,h1,h2 |
| 608 | 0L2432 | Cavo H07RNF 3x6MMQ | Pipe H07RNF 3x6MMQ | z,a9,b7,c8,d9 |
| 608 | 0L0026 | Cavo H07RNF 4x2,5MMQ | Pipe H07RNF 4x2,5MMQ | a2,a4,b1 |
| 608 | 0L0025 | Cavo H07RNF 5x2,5MMQ | Pipe H07RNF 5x2,5MMQ | b,d,e,h,m,n,o,k,t,v,a1,a3,a7, c1,c4,c5,c6,d5,d6,d7,e2,e3, e5,e6,e8,f2,g2,g5,g6,g7,g8, g9,h3,h4,h5 |
| 608 | 0C3632 | Cavo H07RNF 3x2,5MMQ | Pipe H07RNF 3x2,5MMQ | b6 |
| 609 | 0L3720 | Scheda madre | Main board | s,t,v,w,z,a1,a2,a3, a4,a5,a9,b1,b7,c8,e5,e8,e9,f1 |
| 609 | 0L2582 | Scheda madre | Main board | a,b,c,d,e,f,g,h,i,k,m,n,o,q,r,x,a6, a7,a8,b2, b3,b4,b5,b6,b8,b9,c1,c2,c3, c4,c5,c6,c7,c9,d1,d2,d3,d4, d5,d6,d7,d8,d9,e1,e2,e3,e4, e6,e7,f2,f3 |
| Doc. Nr.: 59566UZ00 | | Ed. 2020.06 Updated 2022.10 | | |
| | | Da Ser. Nr./ From Ser.nr.: 839... | | |

| LAVASTOVIGLIE SOTTOTAVOLO NUC/ EUC/ KUC/ NUCA/ ZUCA/ FUCA/ EUCA UNDERCOUNTER DISHWASHER NUC/ EUC/ KUC/ NUCA/ ZUCA/ FUCA/ EUCA | | | | Grassetto = variazioni Bold Print = changes |
|--|-----------------------|---|------------------------------|---|
| Pos. | Cod. Ric. Part No. | Descrizione | Description | Note / Notes |
| 609 | 0L2583 | Scheda madre | Main board | For WS products |
| 610 | 049303 | Filtro RFI trifase | RFI filter; three phase | b,d,e,h,m,n,o,k,t,v,z,a1,a2, a3,a4,a7,a9,b1,b7,h3,h4,h5 Up to Ser. Nr.: 213 |
| 610 | 049977 | Filtro RFI monofase | RFI filter; single phase | a,c,f,g,i,q,s,w,x,a5,a6,a8,b2, b3,b4,b5,b6,b8,c2,c3,d3,d4, g3,g4,h1,h2 Up to Ser. Nr.: 235 |
| 611 | 0L0127 | Morsettiera Princ. Monofase | Junction box | a,c,f,g,i,q,r,w,x,s,a5,a6,a8,b2, b3,b4,b5, b6,b8,c2,c3,c7,c9, d1,d2,d3,d4,d8,e1,e4,e7,f3,f4, f9,g1,g3,g4,h1,h2 |
| 611 | 0L0111 | Morsettiera Princ. Trifase | Junction box | b,d,e,h,m,n,o,k,t,v,z,a1,a2,a3, a4,a7,a9,b1,b7,c1,c4,c5,c6, c8,d5,d6,d7,d9,e2,e3,e5,e6, e8,e9,f2,f6,g2,g5,g6,g7,g8,g9, h3,h4,h5 |
| 612 | 048429 | Fissaggio Res. Vasca | Bracket | |
| 613 | 049954 | Res. Vasca 2000W-230V | Heating element; 230v, 2,0kw | Up to Ser. Nr.: 946 |
| 613 | 0L2109 | Res. Vasca 2000W-230V | Heating element; 230v, 2,0kw | Not for a1,a2,a3,a4,b1,e8,e9 From Ser. Nr.: 947 |
| 613 | 0L2439 | Res. Vasca 2000W-230V | Heating element; 230v, 2,0kw | a1,a2,a3,a4,b1,e5,e8,e9 From Ser. Nr.: 048 |
| 614 | 0L0366 | Supp Sensore | Support; sensor | |
| 615 | 0L2303 | OR 2037 | O Ring | |
| 616 | 049643 | Sensore NTC | Sensor | |
| 617 | 0L3368 | Tappo morsettiera | Barrel Plug | b6 |
| 618 | 0L2765 | OR 6187 D=5.34MM | O Ring | |
| 619 | 049955 | Res. Flangiata 4500W 230V | Heating element 4,5KW 230V | b,d,e,h,m,n,o,k,a7,g5,g6,h3, h4,h5 - Up to Ser. Nr.: 017 |
| 619 | 0L2652 | Res. Flangiata 4500W 230V | Heating element 4,5KW 230V | b,d,e,h,m,n,o,k,a7,c1,c4,c5, c6,d5,d6,d7,e2,e3,e6,f2,f6,f8, g2,g5,g6,g7,g8,g9,h3,h4,h5 From Ser. Nr.: 018 |
| 619 | 049955 | Res. Flangiata 4500W 230V | Heating element 4,5KW 230V | t,v,w,x,z,a9,b7 Up to Ser. Nr.: 002 |
| 619 | 0L2652 | Res. Flangiata 4500W 230V | Heating element 4,5KW 230V | t,v,w,x,z,a9,b7,c7,c8,d8,e4 From Ser. Nr.: 003 |
| 619 | 0L2770 | Res. Flangiata 4500W 230V | Heating element 4,5KW 230V | a1,a2,a3,a4,b1,e5,e8,e9 From Ser. Nr.: 048 |
| 619 | 049980 | Res. Flangiata 2800W 230V | Heating element 2,8KW 230V | a,c,f,g,i,q,r,s,a5,a8,b2,b3,b5, b6,b8,c2,c3d1,d2,d3,d4,d9, e1,e7,f4,f9,g1,g3,g4,h1,h2 |
| 619 | 0L2652 | Res. Flangiata 4500W 230V | Heating element 4,5KW 230V | b4,b5,b6 (connect only one heat- ing element leg) |
| 620 | 0L2303 | OR 2037 | O Ring | |
| 621 | 0L0280 | Premistoppa | Stuffing box | |
| 622 | 049643 | Sonda di Temperatura | Temp. sound | |
| 623 | 065560 | Cappuccio | Protection cap | |
| 624 | 0L3881 | Filtro antidisturbo | Noise suppressor filter | |
| Doc. Nr.: 59566UZ00 | | Ed. 2020.06 Updated 2022.10 Da Ser. Nr./ From Ser.nr.: 839... | | |

| LAVASTOVIGLIE SOTTOTAVOLO NUC/ EUC/ KUC/ NUCA/ ZUCA/ FUCA/ EUCA UNDERCOUNTER DISHWASHER NUC/ EUC/ KUC/ NUCA/ ZUCA/ FUCA/ EUCA | | | | Grassetto = variazioni Bold Print = changes |
|--|-----------------------|--|-----------------------------|--|
| Pos. | Cod. Ric. Part No. | Descrizione | Description | Note / Notes |
| 625 | 049901 | Filtro induttivo-cap.; monofase | Filter; single phase | b,d,e,h,m,n,o,k,t,v,z,a1,a2,a3, a4,a7,a9,b1,b7,c1,c4,c5,c6, c8,d5,d6,d7,d9,e2,e3,e5,e6, e8,e9,f2,f6,g2,g5,g6,g7,g8,g9, h3,h4,h5 - From Ser. Nr.: 236 |
| 626 | 0L2895 | Klixon | Klixon | |
| 627 | 0L2894 | Supporto klixon | Klixon support | |
| 628 | 0C8219 | Dado M5 | M5 Nut | |
| 690 | 0L2485 | Cablaggio | Wiring harness | a,c,f,g,i,q,r,w,x,s,a5,a6,a8,b2, b3,b4,b5, b6,b8,c2,c3,c7,c9,d1, d2,d3,d4,d8,e1,e4,e7,f3,f4,f5,f9, g1,g3,g4,h1,h2 |
| 690 | 0L2486 | Cablaggio | Wiring harness | b,d,e,h,m,n,o,k,t,v,z,a7,a9,b7, c1,c4,c6,c8,d5,d7,d9,e2,e3, e6,f2,f6,f7,f8,g2,g5,g6,g7,g8, g9,h3,h4,h5 |
| 690 | 0L2438 | Cablaggio | Wiring harness | a1,a2,a3,a4,b1 up to 6031 |
| 690 | 0L3719 | Cablaggio | Wiring harness | a1,a2,a3,a4,b1,e5,e8,e9 from 6041 |
| 690 | 0L0464 | Cablaggio aggiuntivo | Additional wiring harness | For salt container (WS products) |
| 690 | 0L2458 | Cablaggio aggiuntivo | Additional wiring harness | For salt pump module (WS products) |
| | | | | |
| | 0L4685 | YEARLY MAINTENANCE KIT | | |
| Qty | Code | Description | Note | |
| 1 | 047578 | CLAMP; 26-38 | Quantity in BOM from 1 to 2 | |
| 1 | 048126 | CLIP; 13-20 | | |
| 1 | 048845 | DRAIN HOSE | | |
| 1 | 049460 | O-RING; ØI=53,65MM; ØE=58,89MM | | |
| 1 | 049480 | RING NUT; FOR AIR GAP | | |
| 1 | 049643 | TEMPERATURE PROBE | | |
| 1 | 049828 | GASKET D.EXT 59.5-D.INT 50-SP1.5 | | |
| 1 | 0L0098 | AIR TRAP; BOILER | | |
| 1 | 0L0481 | TUBE; L=2660 MM; ØE=6 MM; BLU | | |
| 1 | 0L1163 | HOSE; ØI=4,3MM; ØE=6MM; L=2660MM; GREY | | |
| 2 | 0L2303 | O-RING; DIA.9,25X1,78 | | |
| 1 | 0L2666 | AIR GAP | | |
| 1 | 0L3447 | SOLENOID VALVE; 220/240V 50/60HZ;5L/MIN. | | |
| 1 | 0L5076 | RUBBER HOSE | | |
| 1 | 0L5078 | RUBBER HOSE RINSE | | |
| 1 | 049643 | TEMPERATURE PROBE | New component in BOM | |
| | | | | |
| | | | | |
| Doc. Nr.: 59566UZ00 | | Ed. 2020.06 Updated 2022.10 | | Da Ser. Nr./ From Ser.nr.: 839... |