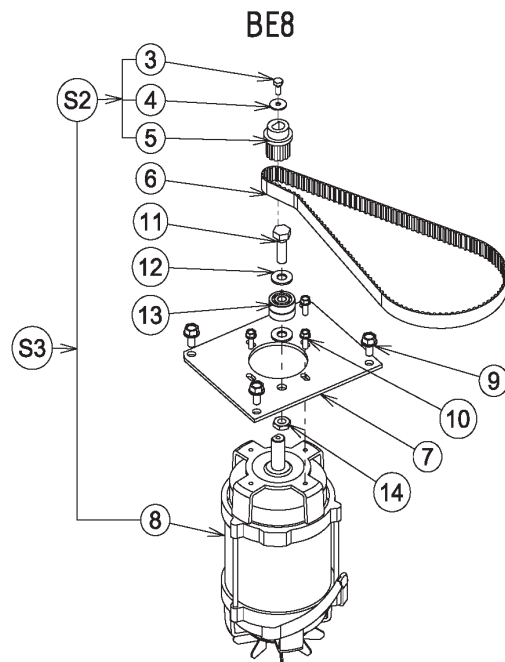
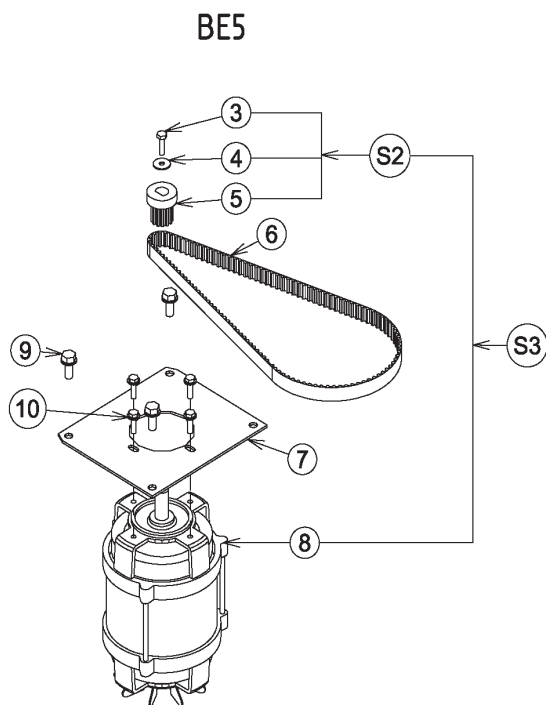
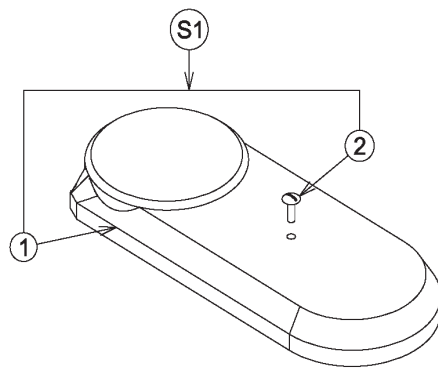
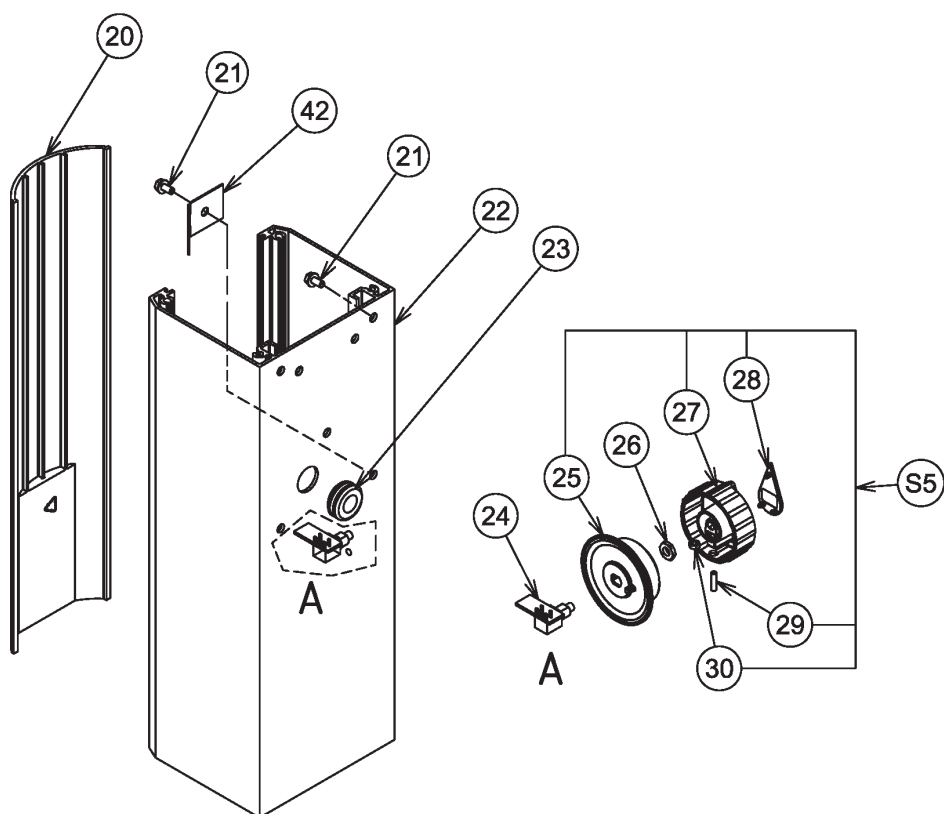


Vue éclatée capot-moteur/ Exploded view hupper-motor **Esploso - Coperchio/motore / Despiece Cubierta/motor** _____

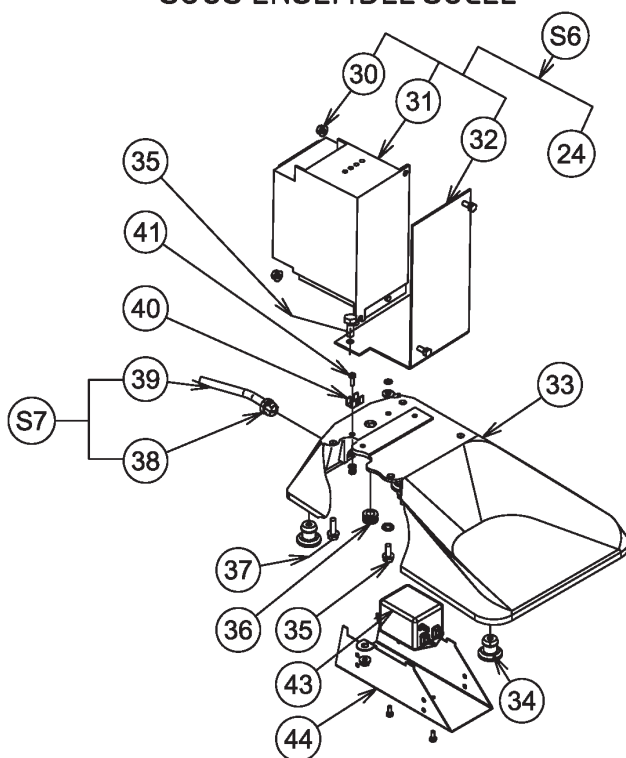


Model	All								
Table	SPBE5YBE8Y		Page	2	Exploded view hupper-motor				
Pos.	Spare Part	Alias Code	Repl. by	S	Info	Kit	Techn. Bulletin	Description	Notes
0001	000000								See S1
0002	0U0237							SCREW; 10 PCS	
0003	0U0665							SCREW SS; M4X10, 10 PCS	
0004	0D2284					+		WASHER CS L4 GALV STL8B; SET 10 PCS	
0005	000000								See S2
0006	0KQ691			S	A			DRIVE BELT; 240 XL 050	
0007	0D0087				D			BE5 MOTOR MOUNTING BRACKET	
0008	0D3568							MOTOR 3 230V 50 WRAPPED B7	
0009	0D0551							SCREW; 10 PCS	
0010	0D3027							TAPTITE SCREW H M4X12 (SET X 10)	
0011	0D2740							SCREW H M8X25 STLESS STL (SET X10)	
0012	0KQ524							WASHER; 10 PCS BMX60	
0013	0KQ560				A			BALL BEARING; 5 PCS, 608Z	
0014	0KQ523							NUT; 10 PCS	
00S1	0D7374			S				UPPER HOOD ASSEMBLY; BE5 BE8	
00S2	0KQ581			S	A			DRIVEN PULLEY	
00S3	0D1051							MOTOR BE5 1 230 50	

Vue éclatée colonne + socle / Exploded view column + stand **Explosionszeichnung - Säule + Gestell** _____



SOUS ENSEMBLE SOCLE

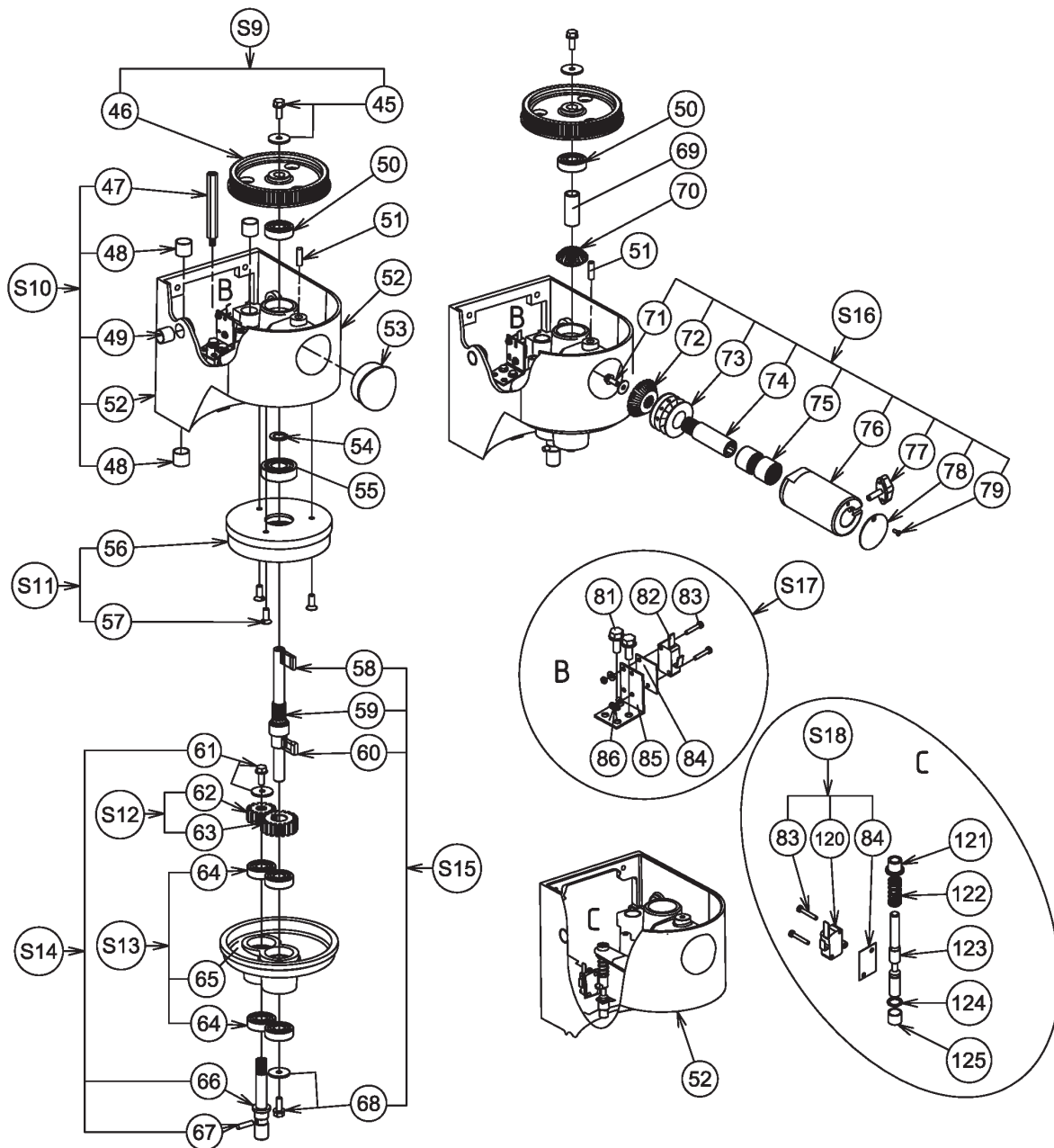


D

BE5 - BE8 12.2015

Model	All									
Table	SPBE5YBE8Y		Page	4		Exploded view column + stand				
Pos.	Spare Part	Alias Code	Repl. by	S	Info	Kit	Techn. Bulletin	Description	Notes	
0020	0D7276							REAR HOOD; BE5		
0020	0D7318							REAR HOOD; BE8		
0021	0D0595							SCREW; 10 PCS		
0022	0D0336							BE5 SAMIX COLUMN		
0022	0D7320							COLUMN; BE8		
0023	0D1211							BM10 GROMMET 140X200X30		
0024	0D7321			S				POTENTIOMETER; BE5 BE8		
0025	0D7334							BUTTON RING SUPPORT		
0026	000000								See 24	
0027	000000								See S5	
0028	000000								See S5	
0029	0D0522					+		SCREW; 10 PCS		
0030	0KL159							NUT; 10 PCS		
0030	0U0665							SCREW SS; M4X10, 10 PCS		
0031	0D3443							SPEED VARIATOR; 230V; BE5		
0031	0D7422				A			SPEED VARIATOR; 115V; BE5 8		
0032	0D7141				D			SUPPORT BRACKET VARIATOR ASSEMBLY		
0033	0D1652				D			BASE; MICROSWITCH		
0034	0D3565			S	A			PAD TR17; 4 PCS.		
0035	0D0551							SCREW; 10 PCS		
0036	0D1014							10 PCS GROMMET		
0037	0D0555				D			SCREW; 10 PS		
0038	0D3566					+		GROMMET SR 6P3 4 (SET X5)		
0039	0D3310			S				CABLE H05 LG1700 + PLUG 2P+E		
0040	0D3567				D			BRASS EARTH TERMINAL (SET X5)		
0041	0D0520							PIN; 10 PCS		
0041	0D0611				D			K55 SCREW TC 4X12		
0041	0KL159							NUT; 10 PCS		
0042	0D7725				D			BRACKET		
0043	0D7793							FILTER		
0044	0D7792				D			SUPPORT		
00S5	0D7335			S				KNOB POTENTIOMETER		
00S6	0D0476				D			BE5 VARIATOR 115 V		
00S6	0D7337							SPEED CONTROL; CPL.		
00S7	0D7375							SUPPLY CABLE; STD; BE5 BE8		
00S7	0D7376				D			SUPPLY CABLE; UK VERSION; BE5 BE8		

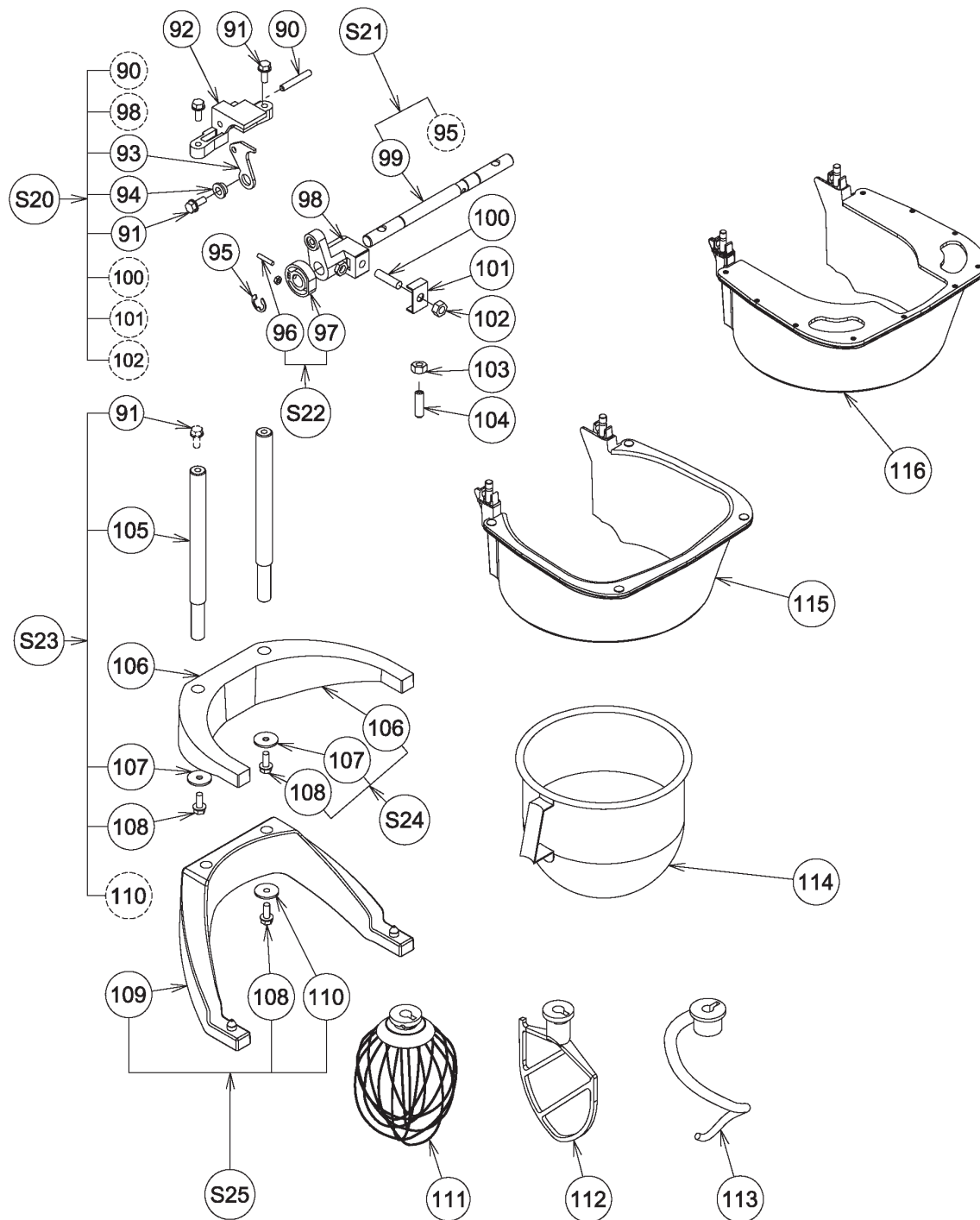
Vue éclatée Mécanisme / Exploded view - Mechanism **Explosionszeichnung - Antrieb**



Model	All								
Table	SPBE5YBE8Y		Page	8	Exploded view - Mechanism				
Pos.	Spare Part	Alias Code	Repl. by	S	Info	Kit	Techn. Bulletin	Description	Notes
0045	0D0513							WASHER; 10 PCS	
0045	0KQ494							SCREW; 10 PCS	
0046	000000								See S9
0047	0U0574							PILLAR	
0048	0D1022				D			SLEEVE; 16X22X16 5 PCS	
0049	0D1007				D			5 PCS SLEEVE 14X16X10	
0050	0D7339			S				BEARING; 6201 2RS	
0051	0D0503							NUT; 10 PCS	
0051	0D1702				D			SCREW; 10 PCS	
0052	0D7338							BODY	
0053	0D0712							BOUCHON P.A. BE5	
0054	0D0639			S				CLIP, 10 PCS	
0055	0KJ007			S	A			BALL BEARING; 6203 2 RS	
0056	0D5078								
0057	0D0664							SCREW; 10 PCS	
0058	0D0552							SPANNER; 4X4X16; SET 5PCS	
0059	0D1829		0D6046	S				SHAFT; B7	
0059	0D6046			S				ARBRE SOLAIRE SAV BE5	
0060	0D0635							WEDGE 5X5X14; 5PCS	
0061	0D7206				D			SCREW; M5X10; SET 10PCS	
0061	0D7207			S	D	+		WASHER; M5; SET 10PCS	
0062	0U0513			S				PLANET GEAR	
0063	0U0514			S				SUN GEAR	
0064	0D7339			S				BEARING; 6201 2RS	
0065	0D3315				D			SHOTBLASTED PLANETARY XBE5	
0066	0D1830			S				ARBRE PORTE OUTIL B7	
0067	0D0396			S				PIN; 10 PCS	
0068	0D0620							BM10 WASHER 24X6.2X2; 10 PCS	
0068	0KQ494							SCREW; 10 PCS	
0069	0D2181							ACCSSRY SOCKT SPACER	
0070	0KQ421			S	A			BEVEL GEAR SAMIX R	
0071	0D0537							SCREW; 10 PCS	
0071	0D0546							WASHER; 10 PCS	
0072	0KQ421			S	A			BEVEL GEAR SAMIX R	
0073	0D6458							BUTEE A AIGUILLES; 17-30	
0074	0D3312				D			ACCSSRY SOCKT SHAFT TYPE K XBE5	

Model	All								
Table	SPBE5YBE8Y		Page	8		Exploded view - Mechanism			
Pos.	Spare Part	Alias Code	Repl. by	S	Info	Kit	Techn. Bulletin	Description	Notes
0075	0D7340							SOCKET HAS NEEDLES; SET 2PCS	
0076	0D3517				D			K ACCESSORY HUB ASSY BE5	
0077	0D7336				D			BLACK BUTTONK	
0078	0D3883				D			OPERCULE BE10	
0079	0D0663							T5/TR21 SCREW TF 3X10	
0081	0U0665							SCREW SS; M4X10, 10 PCS	
0082	000000								See S17
0083	0KQ511							SCREW; 10 PCS	
0084	0U0268							INSULATING PLATE	
0085	000000								See S17
0086	033986					+		SCREW; 10 PCS	
0086	033987					+		SCREW; 10 PCS	
00S9	0KQ582			S				DRIVEN PULLEY WITH SCREW BE5	
0120	000000								See S18
0121	0D7795							BEARING; 8X12X12 SET 5	
0122	0KQ353							SPRING	
0123	0D7796							SPINDLE	
0124	0D6569				D			SPRING RING; 10E (JEU X10)	
0125	0D7794							BEARING; 10X12X12 SET 5	
0S10	0D7319							BODY ASSEMBLY BE5 BE8; BE5 BE8	
0S11	0D0869			S				SAMIX R CROWN ASSY	
0S12	0D0871			S	A			PLANETARY PINION; KIT; SAMIX R	
0S13	0D3352			S				PLANETARY ASSY XBE5	
0S14	0D0341			S				BE5 TOOL HOLDER SHAFT ASSY.	
0S15	0D0870			S				BE5 SUN SHAFT	
0S15	0D7342		0D0870	S				SHAFT WITHOUT PA ASSEMBLY	
0S16	0D7343							ACCESSORY SOCKET	
0S17	0D2592				A			MICROSWITCH ASSY SAMIX R	
0S18	0D7743				A			MICROSWITCH	

**Vue éclatée Monte et baisse / Exploded view - Bowl lift /
Explosionszeichnung - Hebe- und Senkvorrichtung _____**



Model	All								
Table	SPBE5YBE8Y		Page	12	Exploded view - Bowl lift				
Pos.	Spare Part	Alias Code	Repl. by	S	Info	Kit	Techn. Bulletin	Description	Notes
0090	0D0400							PIN; 10 PCS	
0091	0D0555				D			SCREW; 10 PS	
0092	0KJ760							CROSS STAY BE5 SAMIX	
0093	0D0090							SAMIX R LINK ROD	
0094	0KQ331							BUSHING	
0094	0KQ370		0U0652					WASHER	
0095	0D0648				D			10 PCS CIRCLIPS 14E	
0096	0KL159							NUT; 10 PCS	
0096	0KQ526							SCREW	
0097	000000								See S22
0098	0D0092							BE5 HANDLE	
0099	000000								See S21
0100	0D0553							SCREW; 10 PCS	
0101	0D0084							B7 CAP	
0102	0KQ523							NUT; 10 PCS	
0103	0D0503							NUT; 10 PCS	
0104	0D1702				D			SCREW; 10 PCS	
0105	0D0089				D			CRADLE POST BE5	
0106	0D1615		0D0867					SPATULA	
0107	0D0620							BM10 WASHER 24X6.2X2; 10 PCS	
0108	0D0499							SCREW; SET 10PCS; M6X16 INOX	
0109	000000								See S25
0110	0D2878							WASHER SET CS L6 (X10) TR17	
0111	653757							S/S WHISK FOR 5LT MIXER	
0111	653769							S/S WHISK FOR 8LT MIXER	
0112	653756							S/S PADDLE FOR 5LT MIXER	
0112	653768							S/S PADDLE FOR 8LT MIXER	
0113	653765							S/S SPIRAL DOUGH HOOK FOR 5LT MIXER	
0113	653767							S/S SPIRAL DOUGH HOOK FOR 8LT MIXER	
0114	653295							BOWL FOR 5LT MIXER	
0114	653766							S/S BOWL FOR 8LT MIXER	
0115	0D7344			S				SCREEN PROTECTION; BE5 BE8	
0116	653781							CLOSED SPLASH GUARD - BE5/8 WITHOUT HUB	
0116	653782							CLOSED SPLASH GUARD - BE5/8 WITH HUB	
0S20	0D2595							CRANK HANDLE LINK ROD ASSY SAMIX R	
0S21	0D7345							SCREEN PIN ASSEMBLY; BE5 BE8	

Model		All							
Table		SPBE5YBE8Y		Page	12	Exploded view - Bowl lift			
Pos.	Spare Part	Alias Code	Repl. by	S	Info	Kit	Techn. Bulletin	Description	Notes
0S22	0D7346							CAM; ASSY; BE5 BE8	
0S23	0D2593				D			PINS ASSY SAMIX R	
0S24	0D0867							BE5 CRADLE	
0S25	0D7347							CRADLE ASSEMBLY; BE8	