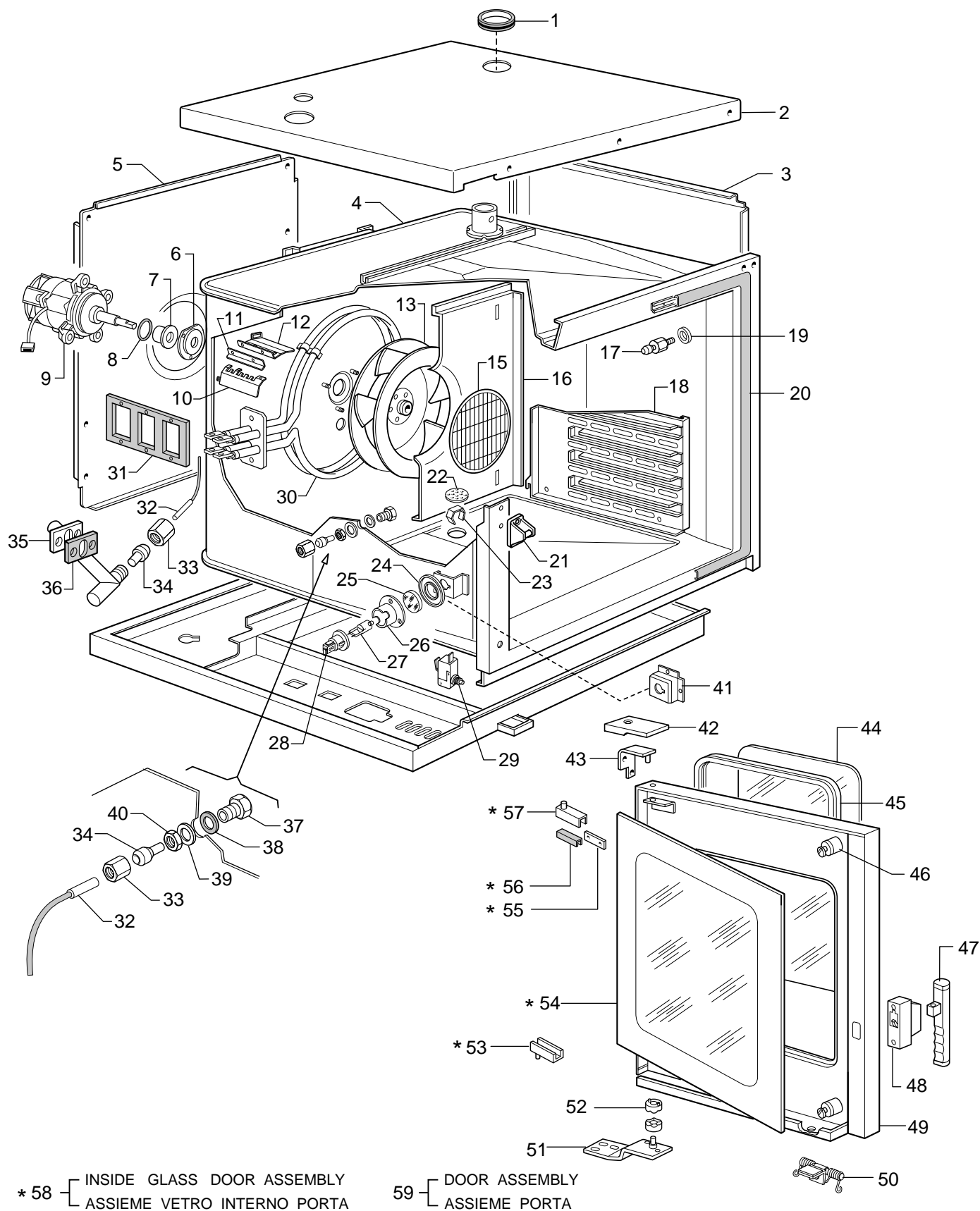


**10 GN 1/1 AND 10 GN 2/1 ELECTRIC STEAM - CONVECTION OVEN**  
**FORNO CONVEZIONE- VAPORE ELETTRICO 10 GN 1/1 E 10 GN 2/1**

PNC	Model	Ref.	Page	Notes	
240183	FCV/E 10 1/1	a	1-2-3	Zanussi	Level/Livello 6
240185	FCV/E 10 2/1	b	1-2-3	Zanussi	Level/Livello 6
240113	FCV/E 10 1/1	c	1-2-3	Zanussi - Japan	Level/Livello 6
240114	FCV/E 10 2/1	d	1-2-3	Zanussi - Japan	Level/Livello 6
260783	ECV/E 10 1/1	e	1-2-3	Electrolux	Level/Livello 6
260785	ECV/E 10 2/1	f	1-2-3	Electrolux	Level/Livello 6
775083	ZCV/E 10 1/1	g	1-2-3	Zoppas	Level/Livello 6
775085	ZCV/E 10 2/1	h	1-2-3	Zoppas	Level/Livello 6
697883	ACV/E 10 1/1	l	1-2-3	Alpeninox	Level/Livello 6
697885	ACV/E 10 2/1	m	1-2-3	Alpeninox	Level/Livello 6

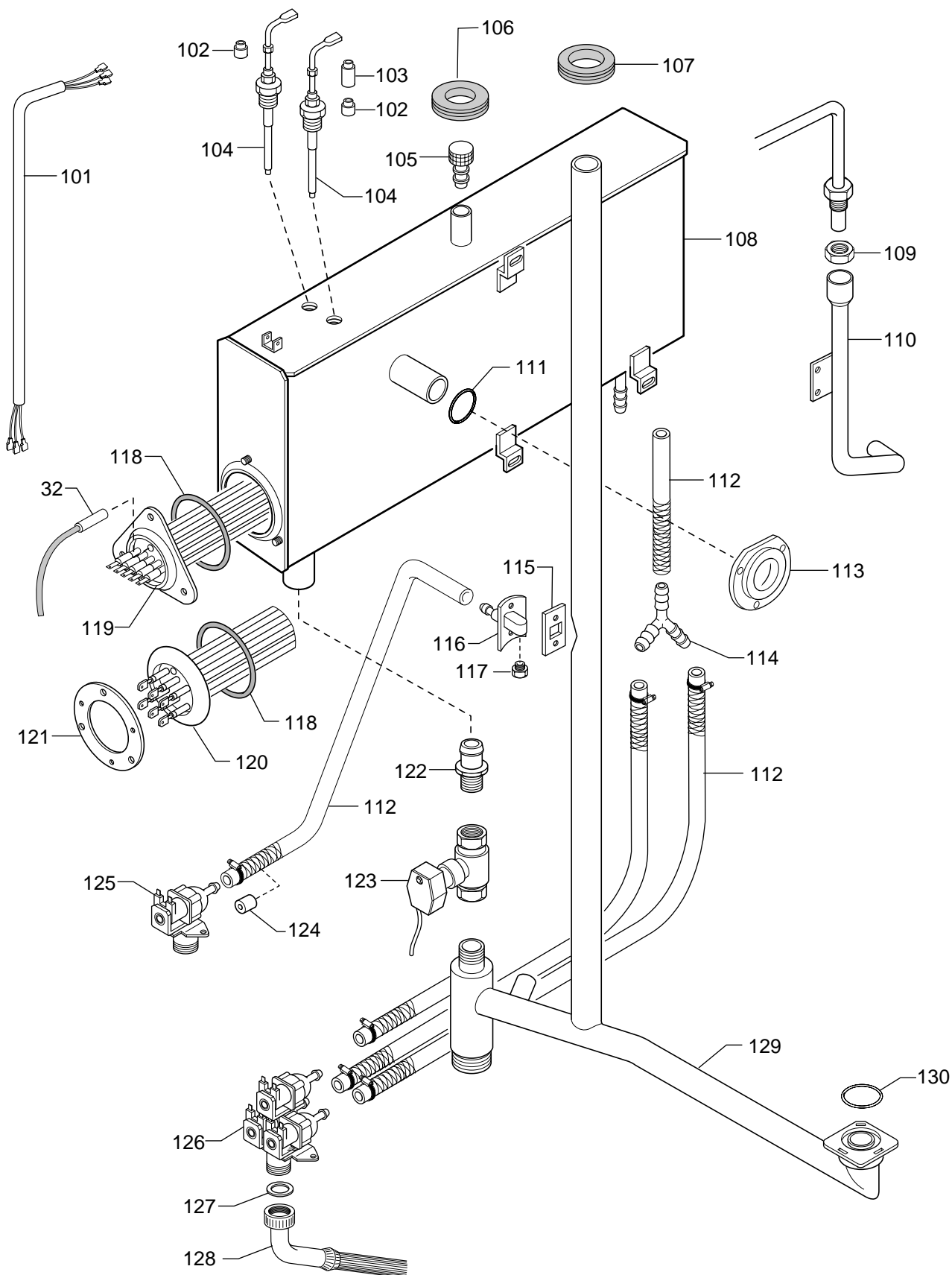
	Index	Indice
Pag. 1	Oven cabinet and door	Cella forno e porta
2	Water system	Impianto idraulico
3	Electrical components	Componenti elettrici
4-7	Spare parts list	Lista ricambi

**Brand / Marchio :** Z-E-P-A  
**Factory code:** 9731



10 GN 1/1 AND 10 GN 2/1 ELECTRIC STEAM - CONVECTION OVEN  
 FORNO CONVEZIONE-VAPORE ELETTRICO 10 GN 1/1 E 10 GN 2/1

LEVEL / LIVELLO 6



10 GN 1/1 AND 10 GN 2/1 ELECTRIC STEAM - CONVECTION OVEN  
 FORNO CONVEZIONE-VAPORE ELETTRICO 10 GN 1/1 E 10 GN 2/1

LEVEL / LIVELLO 6



**3 - 11 012**

10 Gn 1/1 and 10 Gn 2/1 Electric steam - convection oven						Level / Livello 6		
Forno convezione - vapore elettrico 10 Gn 1/1 e 10 Gn 2/1								
PNC	Model	Ref.	PNC	Model	Ref.	PNC	Model	Ref.
240 183	FCV/E 10 1/1	a	260 783	ECV/E 10 1/1	e	775 085	ZCV/E 10 2/1	h
240 185	FCV/E 10 2/1	b	260 785	ECV/E 10 2/1	f	697 883	ACV/E 10 1/1	i
240 113	FCV/E 10 1/1	c	775 083	ZCV/E 10 1/1	g	697 885	ACV/E 10 2/1	m
240 114	FCV/E 10 2/1	d						
Pos	Code	Descrizione	Description			Ref. / Notes		
		Pagina 1	Page 1					
1	053829	Gommino x sfiato vapori	Stuffing gasket, air steam					
2		Coperchio	Lid			acegl	art. 502849801	
2		Coperchio	Lid			bdfhm	art. 521848101	
3		Fianco dx	R.H. side panel			acegl	art. 521836002 R.H.	
3		Fianco sx	L.H. side panel			acegl	art. 521836102 L.H.	
3		Fianco dx	R.H. side panel			bdfhm	art. 521847901 R.H.	
3		Fianco sx	L.H. side panel			bdfhm	art. 521848001 L.H.	
4		Cella forno	Oven cabinet			acegl	art. 850855409	
4		Cella forno	Oven cabinet			bdfhm	art. 850858409	
5		Schienale	Back panel			acegl	art. 521855803	
5		Schienale	Back panel			bdfhm	art. 521836204	
6		Flangia x cuscinetto	Bearing flange				art. 508839300	
7	002699	Cuscinetto	Bearing					
8	002873	Anello OR	O-Ring					
9	002698	Motore	Motor			acegl		
9	002748	Motore	Motor			bdfhm		
10		Supporto resistenze a pettine	Support, heating el. comb scape				art. 503891701	
11		Angolare bloccaggio resistenze	Bracket, heating element fixing				art. 503897400	
12		Supporto resistenze	Support, heating element				art. 503891801	
13	002617	Ventola	Fan			aegl	50 Hz	
13	002139	Ventola	Fan			c	60 Hz	
13	002740	Ventola	Fan			bfhm	50 Hz	
13	002138	Ventola	Fan			d	60 Hz	
15	002618	Protezione ventola	Fan protection			acegl		
15	002741	Protezione ventola	Fan protection			bdfhm		
16	003056	Parete aspirazione	Suction wall			acegl		
16	003210	Parete aspirazione	Suction wall			bdfhm		
17	004390	Supporto x diffusori	Light diffuser support					
18	002686	Diffusore Dx	Light diffuser, R.H.			acegl	R.H./ Dx	
18	002687	Diffusore Sx	Light diffuser, L.H.			acegl	L.H./ Sx	
18	002743	Diffusore Dx	Light diffuser, R.H.			bdfhm	R.H./ Dx	
18	002742	Diffusore Sx	Light diffuser, L.H.			bdfhm	L.H./ Sx	
19	003225	Distanziale x supporto	Spacer, support					
20	002654	Guarnizione cella	Gasket, oven cabinet					
21	002650	Nasello	Catch					
22	056444	Filtro	Filter					
23	054905	Molla	Spring					
24	002628	Flangia x lampada	Flange, lampe					
25	002627	Vetro x lampada	Glass, lampe					
26	002626	Guarnizione x lampada	Gasket, lampe					
27	002956	Lampada	Lampe					
28	002709	Porta lampada	Lamp holder					
From ser. nr. / Da Ser. Nr.: 503.....						Doc. Nr.: 3 - 11 012		
Page: 4						Ed. 9909		

10 Gn 1/1 and 10 Gn 2/1 Electric steam - convection oven						Level / Livello 6		
Forno convezione - vapore elettrico 10 Gn 1/1 e 10 Gn 2/1								
PNC	Model	Ref.	PNC	Model	Ref.	PNC	Model	Ref.
240 183	FCV/E 10 1/1	a	260 783	ECV/E 10 1/1	e	775 085	ZCV/E 10 2/1	h
240 185	FCV/E 10 2/1	b	260 785	ECV/E 10 2/1	f	697 883	ACV/E 10 1/1	i
240 113	FCV/E 10 1/1	c	775 083	ZCV/E 10 1/1	g	697 885	ACV/E 10 2/1	m
240 114	FCV/E 10 2/1	d						
Pos	Code	Descrizione	Description			Ref. / Notes		
29	046063	Microinterruttore	Microswitch					
30	002688	Resistenza elettrica	Heating element			aegl	5666 W - 230 V	
30	0A5330	Resistenza elettrica	Heating element			bfhm	8000 W - 400 V	
30	004081	Resistenza elettrica	Heating element			c	5666 W - 200 V	
30	004082	Resistenza elettrica	Heating element			d	8000 W - 200 V	
31	002689	Guarnizione x resistenza	Gasket, heating element					
32	002615	Sonda PT 1000	Probe					
33	002702	Dado x sonda	Nut, probe					
34	002701	Portasonda	Probe holder					
35		Tubo by pass	By pass, pipe				art. 805887301	
36	002614	Guarnizione x tubo by pass	Gasket, by pass pipe					
37	002623	Raccordo x sonda	Nipple, probe					
38	002624	Guarnizione x raccordo	Gasket, nipple					
39	002700	Rondella	Washer					
40	020997	Controdado	Lock nut					
41	004072	Flangia x lampada	Flange, lampe					
42	002655	Copricerniera	Hinge cover			abcd		
42	002817	Copricerniera	Hinge cover			efgh		
43	002651	Cerniera superiore	Upper hinge					
44	002644	Vetro porta	Glass, door			abcdlm		
44	005254	Vetro porta	Glass, door			ef		
44	002729	Vetro porta	Glass, door			gh		
45	002878	Guarnizione x vetro	Gasket, glass					
46	004838	Bloccavetro	Glass block					
47	002717	Maniglia porta	Handle, door			abcd		
47	002722	Maniglia porta	Handle, door			efgh		
47	0A5320	Maniglia porta	Handle, door			lm		
48	002647	Serratura porta	Lock, door					
49	002642	Porta forno	Door, oven					
50	003773	Dispositivo di scarico condensa	Discharge hose					
51	002652	Cerniera inferiore	Lower hinge					
52	002653	Cilindri dentati cerniera	Hinge teeth cylinders					
53	002875	Cerniera inferiore vetro	Lower hinge glass					
54	002646	Vetro interno porta	Glass, inner door					
55	002877	Piastrina	Plate					
56	002645	Guarnizione vetro interno	Gasket, inner door					
57	002876	Cerniera superiore vetro	Upper hinge glass					
58	003541	Assieme vetro interno	Inside glass assembly					
59		Assieme porta	Door assembly			abcdlm	art. 874857107	
59		Assieme porta	Door assembly			ef	art. 850891100	
59		Assieme porta	Door assembly			gh	art. 874860606	
From ser. nr. / Da Ser. Nr.: 503.....						Doc. Nr.: 3 - 11 012		
Page: 5						Ed. 9909		

**10 Gn 1/1 and 10 Gn 2/1 Electric steam - convection oven**  
**Forno convezione - vapore elettrico 10 Gn 1/1 e 10 Gn 2/1**      **Level / Livello 6**

PNC	Model	Ref.	PNC	Model	Ref.	PNC	Model	Ref.
240 183	FCV/E 10 1/1	a	260 783	ECV/E 10 1/1	e	775 085	ZCV/E 10 2/1	h
240 185	FCV/E 10 2/1	b	260 785	ECV/E 10 2/1	f	697 883	ACV/E 10 1/1	i
240 113	FCV/E 10 1/1	c	775 083	ZCV/E 10 1/1	g	697 885	ACV/E 10 2/1	m
240 114	FCV/E 10 2/1	d						

Pos	Code	Descrizione	Description	Ref. / Notes
		<b>Pagina 2</b>	<b>Page 2</b>	
101	002763	Cavetti x sonde livello	Feeler cable	
102	055435	Distanziale x sonde L= 5 mm	Spacer, feeler	L= 5 mm
103	055347	Distanziale x sonde L= 9 mm	Spacer, feeler	L= 9 mm
104	002694	Sonda, contr. livello acqua	Feeler, water level control	abghlm Till to serial 737...
<b>104</b>	<b>003878</b>	<b>Sonda,contr.livello acqua,fiss.a vite</b>	<b>Feeler, water level contr, thread fix.</b>	<b>abghlm From serial 738...</b>
105	002692	Tappo superiore x boiler	Upper stopper, boiler	
106	002634	Gommino x boiler	Stuffing gasket, boiler	
107	002610	Gommino x tubo fumane	Stuffing gasket, condens. pipe	
108	002693	Boiler	Boiler	abghlm Till to serial 737...
<b>108</b>	<b>003945</b>	<b>Boiler</b>	<b>Boiler</b>	<b>abghlm From serial 738...</b>
<b>108</b>	<b>003855</b>	<b>Kit boiler (n.t. 30019)</b>	<b>Boiler, Kit (T.B. 30019)</b>	<b>abghlm From serial 738...</b>
109		Dado	Nut	art. 514875601
110		Tubo umidificatore	Pipe, humidifier	acegl art. 805889801
110		Tubo umidificatore	Pipe, humidifier	bdfhm art. 805891401
111	002874	Anello di tenuta	Seal ring	
112	002707	Tubo gomma corazzato	Rubber pipe	
113	005381	Flangia x boiler	Flange, boiler	
114	047431	Raccordo a Y	Y connection	
115	002612	Guarnizione x portaugello	Gasket, nozzle holder	
116	002611	Portaugello	Nozzle holder	
117	056679	Ugello x tubo fumane	Nozzle	acegl
117	056681	Ugello x tubo fumane	Nozzle	bdfhm
118	046213	Anello di tenuta x resistenza	Seal ring, heating element	
119	058995	Resistenza boiler 17000 W-230V	Heating element, boiler	aegl 17000 W-230V
119	005294	Resistenza boiler 17000 W-200V	Heating element, boiler	c 17000 W-200V
120	002751	Resistenza boiler 24000 W-400V	Heating element, boiler	bfhm 24000 W-400V
120	004835	Resistenza boiler 18000 W-200V	Heating element, boiler	d 18000 W-200V
121	003362	Flangia fissaggio resistenza	Flange, heating elem. Fixing	bdfhm
122		Raccordo x valvola scarico	Nipple, drain valve	art. 516809501
123	002713	Valvola scarico boiler	Drain valve, boiler	
124	002728	Regolatore di portata acqua ø1,80	Regulator flow, water	acegl dia. 1,80 mm
124	0A5325	Regolatore di portata acqua ø2,00	Regulator flow, water	bdfhm dia. 2,00 mm
125	002613	Elettrovalvola carico acqua	Electric valve	
126	002712	Elettrovalvola carico acqua	Electric valve	
127	061488	Guarnizione x tubo carico acqua	Gasket, water inlet pipe	
128	053789	Tubo carico acqua	Water inlet pipe	
129		Tubo condensa fumane	Condensation pipe	acegl art. 805883302
129		Tubo condensa fumane	Condensation pipe	bdfhm art. 805885501
130	055323	Anello di tenuta	Seal ring	
		<b>Pagina 3</b>	<b>Page 3</b>	
151	005364	Valvola sfiato vapori cella	Vent valve assembly	
152	002697	Leva x valvola sfiato	Lever, air valve	acegl

10 Gn 1/1 and 10 Gn 2/1 Electric steam - convection oven								
Forno convezione - vapore elettrico 10 Gn 1/1 e 10 Gn 2/1						Level / Livello 6		
PNC	Model	Ref.	PNC	Model	Ref.	PNC	Model	Ref.
240 183	FCV/E 10 1/1	a	260 783	ECV/E 10 1/1	e	775 085	ZCV/E 10 2/1	h
240 185	FCV/E 10 2/1	b	260 785	ECV/E 10 2/1	f	697 883	ACV/E 10 1/1	i
240 113	FCV/E 10 1/1	c	775 083	ZCV/E 10 1/1	g	697 885	ACV/E 10 2/1	m
240 114	FCV/E 10 2/1	d						
Pos	Code	Descrizione	Description			Ref. / Notes		
152	002818	Leva x valvola sfiato	Lever, air valve			bdfhm		
153	053671	Microinterruttore	Microswitch					
154	045404	Piastrina isolante	Microswitch, insulating plate					
155	002696	Motoriduttore	Motoreducer					
156		Boccola x leva	Bushing, lever			art.516805700		
157	046258	Grano	Screw					
158	002822	Fermo x sonda spillone	Stopping, meat probe			bdfhm		
159	002821	Sonda spillone	Meat probe			bdfhm		
160	002673	Sonda spillone	Meat probe			acegl		
161	056582	Portafusibile	Fuse holder					
162	058871	Fusibile 6,3 AF	Fuse 6,3 AF			6,3 AF		
163	002820	Fusibile 160 mA	Fuse 160 mA			160 mA		
164	002730	Termostato di sicurezza forno	Safety thermostat, oven					
165	003546	Scheda madre POW 2	Mother board POW 2			POW 2 liv.-level 6		
166	002720	Scheda interfaccia UIC	Interface board UIC			UIC		
167	002721	Supporto scheda UIC	Support, board					
168	002669	Supporto scheda POW 2	Support, board					
169	002690	Ventilatore	Cooling fan					
170	058872	Resistenza	Resistor			100 Ohm		
171	058873	Morsettiera x resistenza	Terminal board, resistor					
172	066834	Gommino passacavo ø 4 mm	Chock gasket dia. 4 mm			dia. 4 mm		
173	054928	Contattore K2 - 23 A10	Contactor K2 - 23 A10			bcdhfm K2 - 23 A10		
174	058805	Contattore K2 - 16 A10	Contactor K2 - 16 A10			abcefglm K2 - 16 A10		
174	059993	Contattore K2 - 45 A00	Contactor K2 - 45 A00			c K2 - 45 A00		
175	056148	Condensatore 10 µF	Condenser 10 µF			acegl 10 µF		
175	047744	Condensatore 20 µF	Condenser 20 µF			bdfhm 20 µF		
176	005321	Trasformatore 350VA / 0 ÷ 240 V	Transformer			cd 350VA / 0 ÷ 240 V		
177	002691	Morsettiera	Terminal board			abefghlm		
177		Morsettiera	Terminal board			cd art.639806801		
178	058857	Rele'	Relay			abefghlm		
178	005328	Rele'	Relay			cd		
179	002856	Trasformatore 230V/11,5V 50VA	Transformer			acegl 230V/11,5V 50VA		
179	002749	Trasformatore 230V/11,5V 100VA	Transformer			bdfhm 230V/11,5V 100VA		
180	002920	Fusibile 250 mA	Fuse 250 mA			acegl 250 mA		
180	002750	Fusibile 400 mA	Fuse 400 mA			bdfhm 400 mA		
181	002670	Prolunga x pulsante	Extension					
182	053342	Molla	Spring					
183	002674	Fermo x sonda spillone	Stopping, meat probe			acegl		
184	002719	Membrana cruscotto	Membrane, control panel			abcd		
184	005255	Membrana cruscotto	Membrane, control panel			ef		
184	002733	Membrana cruscotto	Membrane, control panel			gh		
184	0A5319	Membrana cruscotto	Membrane, control panel			lm		
185	002718	Cruscotto	Control panel			abcd		
185	002732	Cruscotto	Control panel			efgh		
185	0A5318	Cruscotto	Control panel			lm		
From ser. nr. / Da Ser. Nr.: 503.....						Doc. Nr.: 3 - 11 012		
Page: 7						Ed. 9909		