

BRASIERA 80/100L E900 XP BRATT PAN 80/100L E900 XP

| PNC | Model | Ref | Brand | Version | Notes |
|---------------|-------------------|-----------|------------|-----------|------------------------------------------------|
| 190001 | Z9BREHDOF9 | u2 | ZAN | EL | 80LT DUPLEX BOTTOM AUT. |
| 190EAO | Z9BREHDOF0 | w2 | ZAN | EL | 80LT DUPLEX BOTTOM MARINE |
| 190EAU | E9BREJDPFM | v2 | EPR | EL | 100LT DUPLEX BOTTOM AUT. MARINE |
| 391134 | E9BRGHMOF0 | a | EPR | GAS | 80LT MILD STEEL BOTTOM |
| 391135 | E9BRGHMOFM | b | EPR | GAS | 80LT MILD STEEL BOTTOM AUT |
| 391136 | E9BRGHDOF0 | c | EPR | GAS | 80LT DUPLEX BOTTOM |
| 391137 | E9BRGHDOFM | d | EPR | GAS | 80LT DUPLEX BOTTOM AUT. |
| 391138 | E9BRGJMPF0 | e | EPR | GAS | 100LT MILD STEEL BOTTOM |
| 391139 | E9BRGJMPFM | f | EPR | GAS | 100LT MILD ST. BOTTOM AUT. |
| 391140 | E9BRGJDPF0 | g | EPR | GAS | 100LT DUPLEX BOTTOM |
| 391141 | E9BRGJDPFM | h | EPR | GAS | 100LT DUPLEX BOTTOM AUT. |
| 391143 | E9BREHMOF0 | l | EPR | EL | 80LT MILD STEEL BOTTOM |
| 391144 | E9BREHMOFM | m | EPR | EL | 80LT MILD STEEL BOTTOM AUT. |
| 391145 | E9BREHDOF0 | n | EPR | EL | 80LT DUPLEX BOTTOM |
| 391146 | E9BREHDOFM | o | EPR | EL | 80LT DUPLEX BOTTOM AUT. |
| 391147 | E9BREJMPF0 | p | EPR | EL | 100LT MILD STEEL BOTTOM |
| 391148 | E9BREJMPFM | q | EPR | EL | 100LT MILD ST. BOTTOM AUT. |
| 391149 | E9BREJDPF0 | r | EPR | EL | 100LT DUPLEX BOTTOM |
| 391150 | E9BREJDPFM | s | EPR | EL | 100LT DUPLEX BOTTOM AUT. |
| 391302 | E9BRGHDOFW | t2 | EPR | GAS | 80LT DUPLEX BOTTOM AUT. |
| 391416 | E9BREHDOF0 | n | EPR | EL | 80LT EL.BRATT PAN DUPLEX-WATERMARK |
| 391417 | E9BREHDOFM | o | EPR | EL | 80LT EL.BRATT PAN DUPLEX AUT-WATERMARK |
| 391420 | E9BREJDPF0 | r | EPR | EL | 100LT EL.BRATT PAN DUPLEX-WATERMARK |
| 391421 | E9BREJDPFM | s | EPR | EL | 100LT EL.BRATT PAN DUPLEX AUT-WATERMARK |
| 392134 | Z9BRGHMOF0 | a1 | ZAN | GAS | 80LT MILD STEEL BOTTOM |
| 392135 | Z9BRGHMOFM | b1 | ZAN | GAS | 80LT MILD STEEL BOTTOM AUT |
| 392136 | Z9BRGHDOF0 | c1 | ZAN | GAS | 80LT DUPLEX BOTTOM |
| 392137 | Z9BRGHDOFM | d1 | ZAN | GAS | 80LT DUPLEX BOTTOM AUT. |
| 392138 | Z9BRGJMPF0 | e1 | ZAN | GAS | 100LT MILD STEEL BOTTOM |
| 392139 | Z9BRGJMPFM | f1 | ZAN | GAS | 100LT MILD ST. BOTTOM AUT. |
| 392140 | Z9BRGJDPF0 | g1 | ZAN | GAS | 100LT DUPLEX BOTTOM |
| 392141 | Z9BRGJDPFM | h1 | ZAN | GAS | 100LT DUPLEX BOTTOM AUT. |
| 392143 | Z9BREHMOF0 | n1 | ZAN | EL | 80LT MILD STEEL BOTTOM |

Index

General components / Componenti struttura

Lifting system / Componenti sollevamento

Electric components / Componenti elettrici

Gas components UNTILL WK46 2011 / Componenti Gas FINO a sett. 46/2011

Gas components FROM WK47 2011 / Componenti Gas DA a sett. 47/2011

Nozzles table / Tabelle ugelli

Spare parts list / Lista ricambi

Page

3

4

5

6

7

8

9-15

Bold=last change / Grassetto =ultima modifica

Rev. 11

| | | | |
|-------------------------------------|--------------------------------|---------|-------------------------|
| From Ser. Nr. 016 Up to Ser. Nr. | Ed. 2018-02 Updated 2022-07 | Page: 1 | Doc No:59785GS00 |
|-------------------------------------|--------------------------------|---------|-------------------------|

BRASIERA 80/100L E900 XP BRATT PAN 80/100L E900 XP

| PNC | Model | Ref | Brand | Version | Notes |
|---------------|-------------------|-----------|------------|-----------|---------------------------------------------------|
| 392144 | Z9BREHMOFM | o1 | ZAN | EL | 80LT MILD STEEL BOTTOM AUT. |
| 392145 | Z9BREHDOF0 | p1 | ZAN | EL | 80LT DUPLEX BOTTOM |
| 392146 | Z9BREHDOFM | q1 | ZAN | EL | 80LT DUPLEX BOTTOM AUT. |
| 392147 | Z9BREJMPF0 | r1 | ZAN | EL | 100LT MILD STEEL BOTTOM |
| 392148 | Z9BREJMPFM | s1 | ZAN | EL | 100LT MILD ST. BOTTOM AUT. |
| 392149 | Z9BREJDPF0 | t1 | ZAN | EL | 100LT DUPLEX BOTTOM |
| 392150 | Z9BREJDPFM | u1 | ZAN | EL | 100LT DUPLEX BOTTOM AUT. |
| 392416 | Z9BREHDOF0 | p1 | ZAN | EL | 80LT EL.BRATT PAN DUPLEX -WATERMARK |
| 392417 | Z9BREHDOFM | q1 | ZAN | EL | 80LT EL.BRATT PAN DUPLEX AUT-WATERMARK |
| 392420 | Z9BREJDPF0 | t1 | ZAN | EL | 100LT EL.BRATT PAN DUPLEX -WATERMARK |
| 392421 | Z9BREJDPFM | u1 | ZAN | EL | 100LT EL.BRATT PAN DUPLEX AUT-WATERMARK |
| 393134 | A9BRGHMOF0 | a2 | OEM | GAS | 80LT MILD STEEL BOTTOM |
| 393135 | A9BRGHMOFM | b2 | OEM | GAS | 80LT MILD STEEL BOTTOM AUT |
| 393136 | A9BRGHDOF0 | c2 | OEM | GAS | 80LT DUPLEX BOTTOM |
| 393137 | A9BRGHDOFM | d2 | OEM | GAS | 80LT DUPLEX BOTTOM AUT. |
| 393138 | A9BRGJMPF0 | e2 | OEM | GAS | 100LT MILD STEEL BOTTOM |
| 393139 | A9BRGJMPFM | f2 | OEM | GAS | 100LT MILD ST. BOTTOM AUT. |
| 393140 | A9BRGJDPF0 | g2 | OEM | GAS | 100LT DUPLEX BOTTOM |
| 393141 | A9BRGJDPFM | h2 | OEM | GAS | 100LT DUPLEX BOTTOM AUT. |
| 393143 | A9BREHMOF0 | l2 | OEM | EL | 80LT MILD STEEL BOTTOM |
| 393144 | A9BREHMOFM | m2 | OEM | EL | 80LT MILD STEEL BOTTOM AUT. |
| 393145 | A9BREHDOF0 | n2 | OEM | EL | 80LT DUPLEX BOTTOM |
| 393146 | A9BREHDOFM | o2 | OEM | EL | 80LT DUPLEX BOTTOM AUT. |
| 393147 | A9BREJMPF0 | p2 | OEM | EL | 100LT MILD STEEL BOTTOM |
| 393148 | A9BREJMPFM | q2 | OEM | EL | 100LT MILD ST. BOTTOM AUT. |
| 393149 | A9BREJDPF0 | r2 | OEM | EL | 100LT DUPLEX BOTTOM |
| 393150 | A9BREJDPFM | s2 | OEM | EL | 100LT DUPLEX BOTTOM AUT. |
| 393416 | A9BREHDOF0 | n2 | OEM | EL | 80LT EL.BRAISING PAN-DUOMAT -WATERMARK |
| 393417 | A9BREHDOFM | o2 | OEM | EL | 80LT EL.BRAISING PAN-DUOMAT AUT-WATERMARK |
| 393420 | A9BREJDPF0 | r2 | OEM | EL | 100LT EL.BRAISING PAN-DUOMAT -WATERMARK |
| 393421 | A9BREJDPFM | s2 | OEM | EL | 100LT EL.BRAISING PAN-DUOMAT AUT-WATERMARK |

Index

General components / Componenti struttura

Lifting system / Componenti sollevamento

Electric components / Componenti elettrici

Gas components UNTILL WK46 2011 / Componenti Gas FINO a sett. 46/2011

Gas components FROM WK47 2011 / Componenti Gas DA a sett. 47/2011

Nozzles table / Tabelle ugelli

Spare parts list / Lista ricambi

Page

3

4

5

6

7

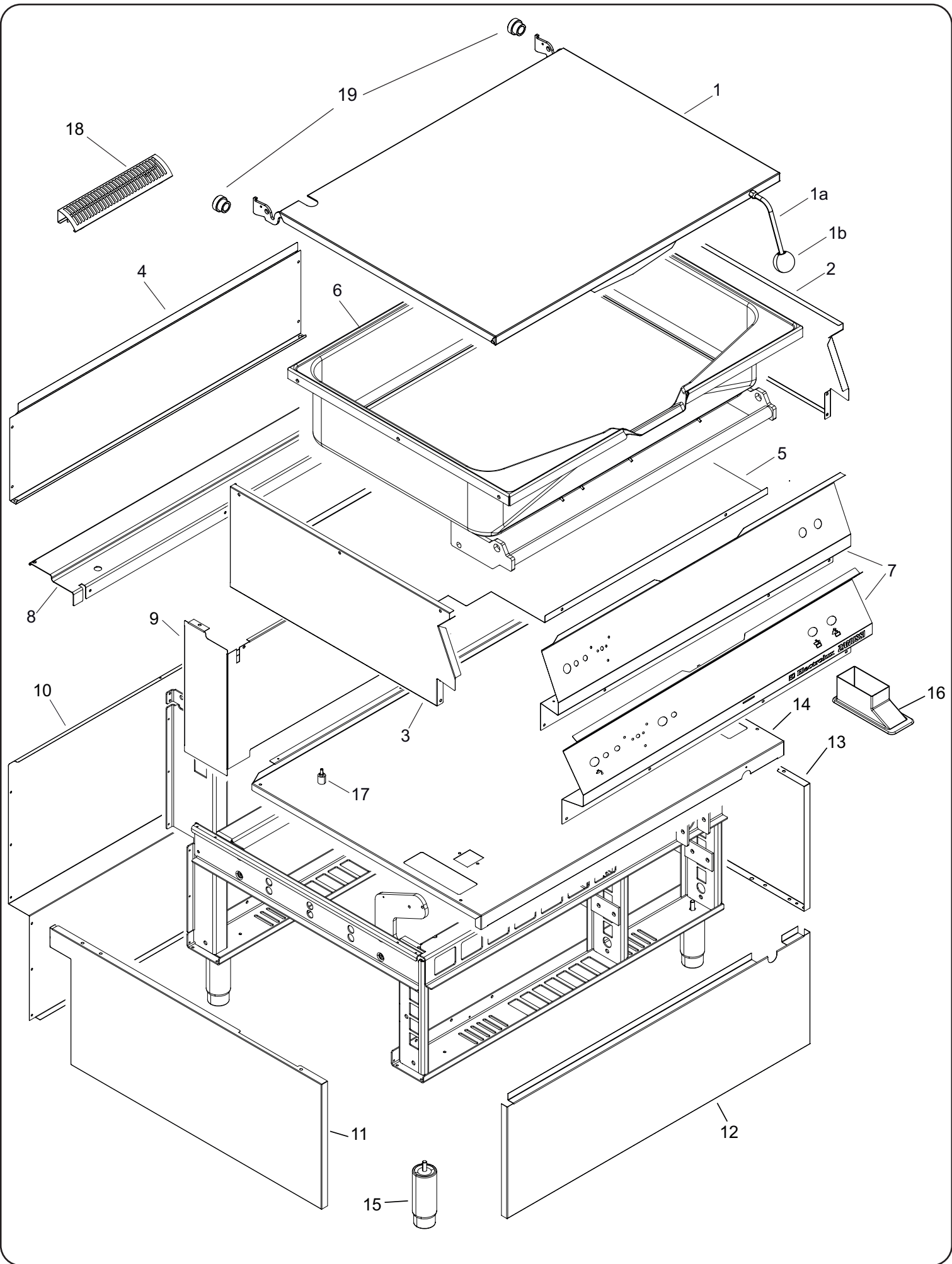
8

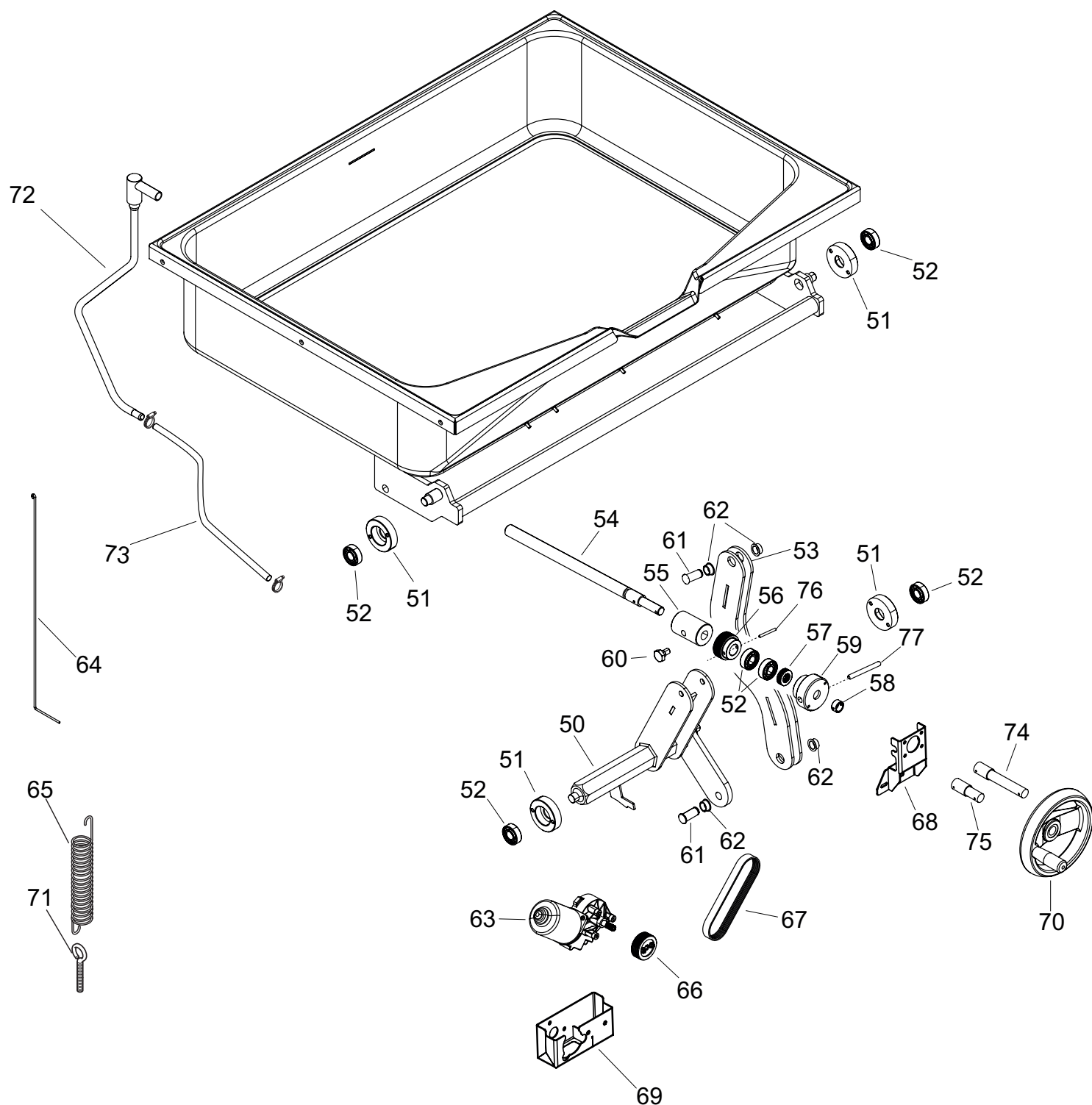
9-15

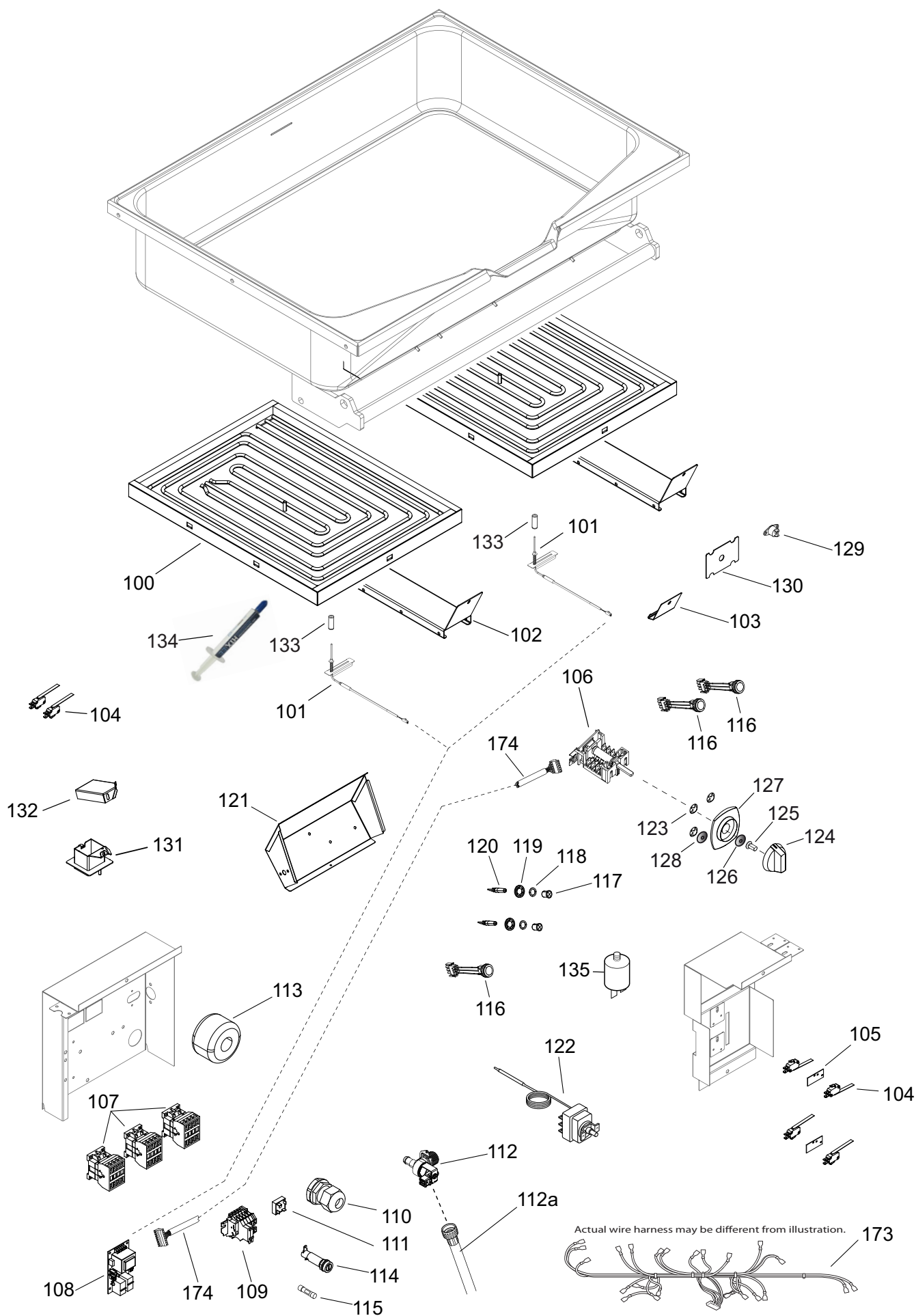
Bold=last change / Grassetto =ultima modifica

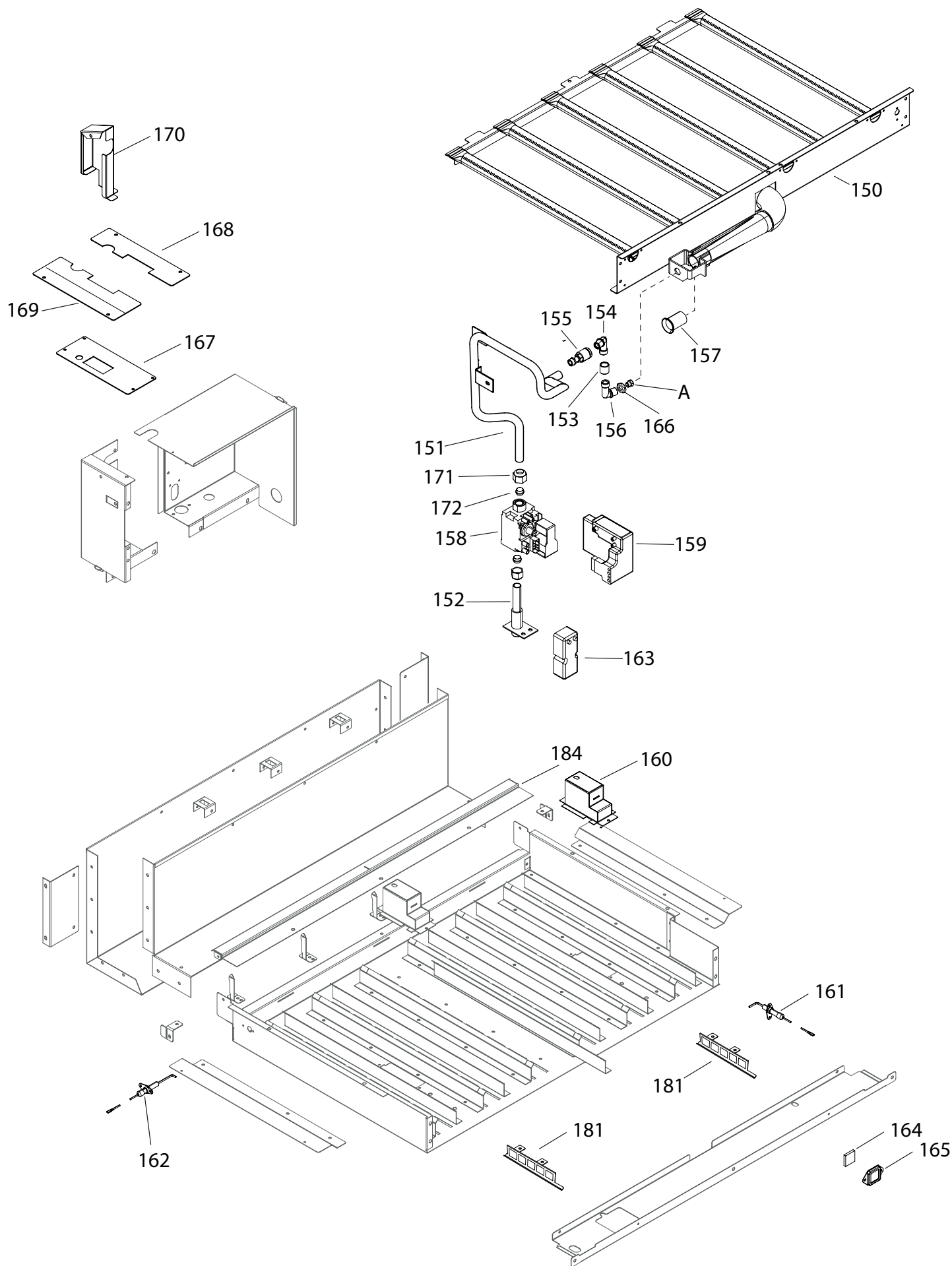
Rev. 11

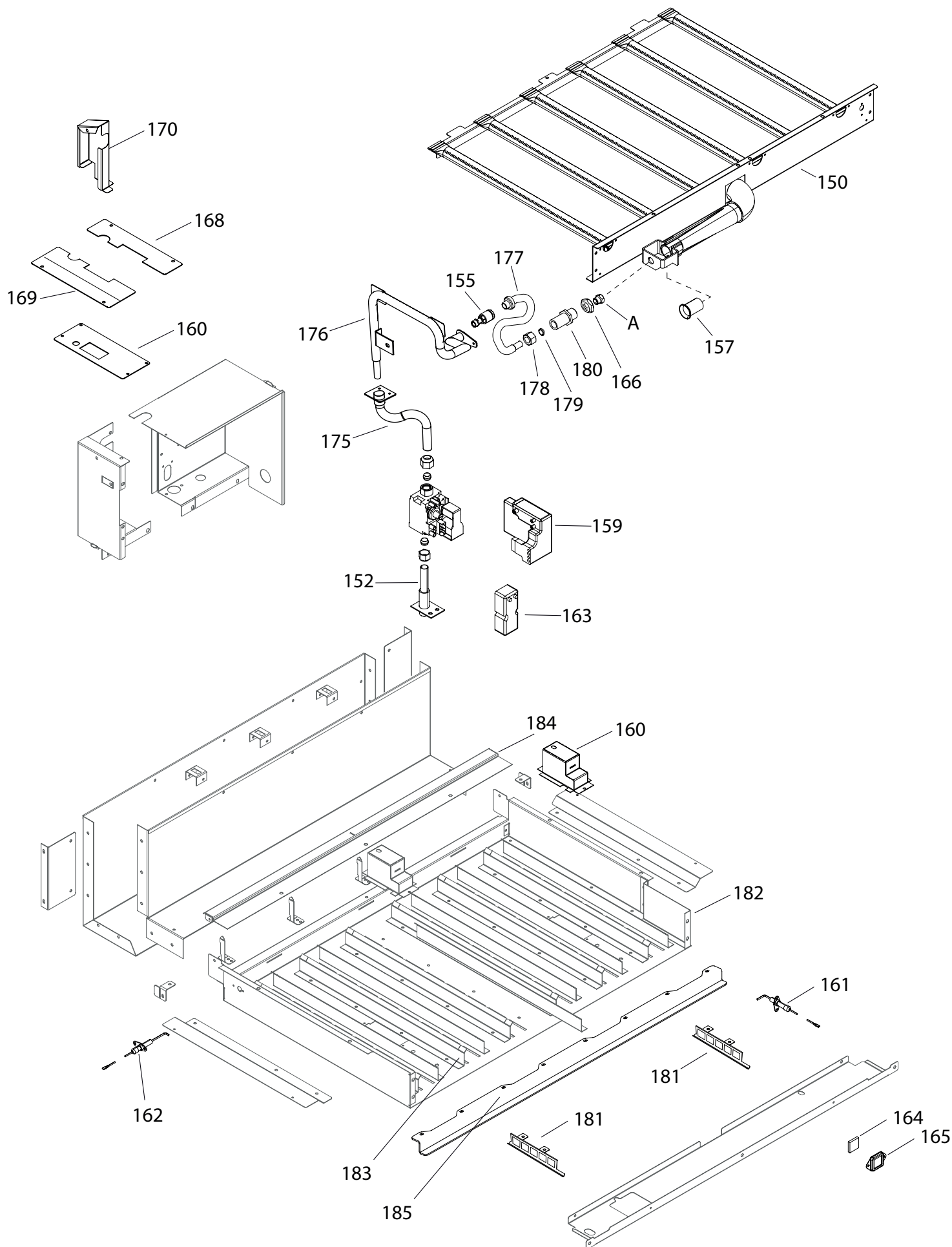
| | | | |
|-------------------------------------|--------------------------------|---------|------------------|
| From Ser. Nr. 016 Up to Ser. Nr. | Ed. 2018-02 Updated 2022-07 | Page: 2 | Doc No:59785GS00 |
|-------------------------------------|--------------------------------|---------|------------------|











| Brasiera 80lt / Brat Pan 80lt | | | | |
|---------------------------------------|-----------------|-----------|--------|--------------|
| A - Ugello bruciatore / Burner nozzle | | | | |
| Code | Spare part code | Reference | | |
| A05158400 | 0A2104 | ø 2.40 | 3+3B/P | G30 30mbar |
| A05659400 | 0A2475 | ø 2.25 | 3B/P | G30 37mbar |
| A05620700 | 058335 | ø 2.05 | 3B/P | G30 50mbar |
| A05659600 | 059359 | ø 3.60 | 2H/2E+ | G20 20mbar |
| 516813100 | 002782 | ø 3.40 | 2H | G20 25mbar |
| 514887900 | 059639 | ø 3.75 | 2L | G25 25mbar |
| A05659600 | 059359 | ø 3.60 | 2K | G25.3 25mbar |
| A05257200 | 0C0703 | ø 4.20 | 2ELL | G25 20mbar |
| 514887900 | 059639 | ø 3.75 | 2ES | G25.1 25mbar |

| Brasiera 100lt / Brat Pan 100lt | | | | |
|---------------------------------------|-----------------|-----------|--------|--------------|
| A - Ugello bruciatore / Burner nozzle | | | | |
| Code | Spare part code | Reference | | |
| A05230100 | 056795 | ø 2.70 | 3+3B/P | G30 30mbar |
| A05659500 | 059382 | ø 2.50 | 3B/P | G30 37mbar |
| A05662000 | 0A5356 | ø 2.35 | 3B/P | G30 50mbar |
| 516813500 | 002792 | ø 4.15 | 2H/2E+ | G20 20mbar |
| 516816000 | 002866 | ø 3.90 | 2H | G20 25mbar |
| 516816500 | 002864 | ø 4.50 | 2L | G25 25mbar |
| 514888900 | 059532 | ø 4.25 | 2K | G25.3 25mbar |
| 516832800 | 003951 | ø 4.70 | 2ELL | G25 20mbar |
| 516816500 | 002864 | ø 4.50 | 2S | G25.1 25mbar |

BRASIERA 80/100L E900 XP
BRATT PAN 80/100L E900 XP

| Pos | Factory Code | Spare Code | Descrizione | Description | Ref./Notes |
|-----|--------------|------------|----------------------------|------------------------------|-----------------------------|
| 1 | 87089CV00 | 0C7398 | ASSIEME COPERCHIO | COMPLETE COVER | 100L untill sn136 |
| 1 | 87089CV01 | 0C8631 | ASSIEME COPERCHIO | COMPLETE COVER | 100L from sn137 |
| 1 | 87089ML00 | * | ASSIEME COPERCHIO | COMPLETE COVER | 80L untill sn136 |
| 1 | 87089ML01 | 0C7957 | ASSIEME COPERCHIO | COMPLETE COVER | 80L from sn137 |
| 1a | 51489B800 | 0C8426 | MANIGLIA | HANDLE SHAFT | |
| 1b | 548832200 | 0A5213 | IMPUGNATURA | KNOB | |
| 2 | 50389W801 | 0C8566 | FIANCO DX VASCA | WELL SIDE PANEL, RIGHT | |
| 3 | 50389W701 | 0C8565 | FIANCO SX VASCA | WELL SIDE PANEL, LEFT | |
| 4 | 50389VY02 | 0C8468 | SCHIENALE VASCA | WELL BACK PANEL | 100L - GAS |
| 4 | 5038A0402 | 0C8754 | SCHIENALE VASCA | WELL BACK PANEL | 80L - GAS |
| 4 | 50389MT01 | * | SCHIENALE VASCA | WELL BACK PANEL | 100L - EL |
| 4 | 50389MU01 | 0CB291 | SCHIENALE VASCA | WELL BACK PANEL | 80L - EL |
| 5 | 50389WG02 | * | FONDO RIVESTIMENTO VASCA | WELL BOTTON PANEL | 100L - EL |
| 5 | 50389WH03 | * | FONDO RIVESTIMENTO VASCA | WELL BOTTON PANEL | 80L - EL |
| 6 | 87589AU00 | * | ASSIEME VASCA DUPLEX | WELL, BRAT PAN DUPLEX | 100L EL - untill sn136 |
| 6 | 87589AU04 | 0C8409 | ASSIEME VASCA DUPLEX | WELL, BRAT PAN DUPLEX | 100L EL - from sn137 |
| 6 | 87589B601 | * | ASSIEME VASCA DUPLEX | WELL, BRAT PAN DUPLEX | 100L GAS - untill sn136 |
| 6 | 87589B605 | 0C8414 | ASSIEME VASCA DUPLEX | WELL, BRAT PAN DUPLEX | 100L GAS - from sn137 |
| 6 | 87589B701 | * | ASSIEME VASCA DUPLEX | WELL, BRAT PAN DUPLEX | 80L EL - untill sn136 |
| 6 | 87589B704 | 0C8388 | ASSIEME VASCA DUPLEX | WELL, BRAT PAN DUPLEX | 80L EL - from sn137 |
| 6 | 87589B801 | * | ASSIEME VASCA DUPLEX | WELL, BRAT PAN DUPLEX | 80L GAS - untill sn136 |
| 6 | 87589B805 | 0C8415 | ASSIEME VASCA DUPLEX | WELL, BRAT PAN DUPLEX | 80L GAS - from sn137 |
| 6 | 87589B901 | * | ASSIEME VASCA FERRO | WELL, BRAT PAN MILD STEEL | 100L EL - untill sn136 |
| 6 | 87589B904 | 0C8416 | ASSIEME VASCA FERRO | WELL, BRAT PAN MILD STEEL | 100L EL - from sn137 |
| 6 | 87589BB01 | * | ASSIEME VASCA FERRO | WELL, BRAT PAN MILD STEEL | 100L GAS - untill sn136 |
| 6 | 87589BB05 | 0C8417 | ASSIEME VASCA FERRO | WELL, BRAT PAN MILD STEEL | 100L GAS - from sn137 |
| 6 | 87589BC01 | * | ASSIEME VASCA FERRO | WELL, BRAT PAN MILD STEEL | 80L EL - untill sn136 |
| 6 | 87589BC04 | 0C8418 | ASSIEME VASCA FERRO | WELL, BRAT PAN MILD STEEL | 80L EL - from sn137 |
| 6 | 87589BD01 | * | ASSIEME VASCA FERRO | WELL, BRAT PAN MILD STEEL | 80L GAS - untill sn136 |
| 6 | 87589BD05 | 0C8419 | ASSIEME VASCA FERRO | WELL, BRAT PAN MILD STEEL | 80L GAS - from sn137 |
| 7 | 83089FR01 | 0C7397 | CRUSCOTTO BRAS. AUTOMATICA | CONTROL PANEL AUTOMATIC B.P. | ELX 100L EL - untill sn136 |
| 7 | 83089FR08 | 0C8389 | CRUSCOTTO BRAS. AUTOMATICA | CONTROL PANEL AUTOMATIC B.P. | ELX 100L EL - from sn137 |
| 7 | 83089FS01 | 0C7396 | CRUSCOTTO BRAS. AUTOMATICA | CONTROL PANEL AUTOMATIC B.P. | ELX 100L GAS - untill sn136 |
| 7 | 83089FS08 | 0C8390 | CRUSCOTTO BRAS. AUTOMATICA | CONTROL PANEL AUTOMATIC B.P. | ELX 100L GAS - from sn137 |
| 7 | 83089FV01 | * | CRUSCOTTO BRAS. AUTOMATICA | CONTROL PANEL AUTOMATIC B.P. | ELX 80L EL - untill sn136 |
| 7 | 83089FV08 | 0C7952 | CRUSCOTTO BRAS. AUTOMATICA | CONTROL PANEL AUTOMATIC B.P. | ELX 80L EL - from sn137 |
| 7 | 83089FX01 | * | CRUSCOTTO BRAS. AUTOMATICA | CONTROL PANEL AUTOMATIC B.P. | ELX 80L GAS - untill sn136 |

BRASIERA 80/100L E900 XP
BRATT PAN 80/100L E900 XP

| Pos | Factory Code | Spare Code | Descrizione | Description | Ref./Notes |
|-----|--------------|------------|----------------------------|------------------------------|---------------------------|
| 7 | 83089FX08 | 0C8391 | CRUSCOTTO BRAS. AUTOMATICA | CONTROL PANEL AUTOMATIC B.P. | ELX 80L GAS from sn137 |
| 7 | 83089FZ00 | * | CRUSCOTTO BRAS. MANUALE | CONTROL PANEL MANUAL B.P. | ELX 100L EL untill sn136 |
| 7 | 83089FZ07 | 0C8392 | CRUSCOTTO BRAS. MANUALE | CONTROL PANEL MANUAL B.P. | ELX 100L EL from sn137 |
| 7 | 83089G100 | * | CRUSCOTTO BRAS. MANUALE | CONTROL PANEL MANUAL B.P. | ELX 80L EL untill sn136 |
| 7 | 83089G107 | 0C8393 | CRUSCOTTO BRAS. MANUALE | CONTROL PANEL MANUAL B.P. | ELX 80L EL from sn137 |
| 7 | 83089G200 | * | CRUSCOTTO BRAS. MANUALE | CONTROL PANEL MANUAL B.P. | ELX 100L GAS untill sn136 |
| 7 | 83089G207 | 0C8394 | CRUSCOTTO BRAS. MANUALE | CONTROL PANEL MANUAL B.P. | ELX 100L GAS from sn137 |
| 7 | 83089G300 | * | CRUSCOTTO BRAS. MANUALE | CONTROL PANEL MANUAL B.P. | ZAN 100L GAS untill sn136 |
| 7 | 83089G306 | 0C8395 | CRUSCOTTO BRAS. MANUALE | CONTROL PANEL MANUAL B.P. | ZAN 100L GAS from sn137 |
| 7 | 83089G400 | * | CRUSCOTTO BRAS. MANUALE | CONTROL PANEL MANUAL B.P. | ELX 80L GAS untill sn136 |
| 7 | 83089G407 | 0C8396 | CRUSCOTTO BRAS. MANUALE | CONTROL PANEL MANUAL B.P. | ELX 80L GAS from sn137 |
| 7 | 83089LR01 | * | CRUSCOTTO BRAS. MANUALE | CONTROL PANEL MANUAL B.P. | t2 |
| 7 | 83089G700 | * | CRUSCOTTO BRAS. MANUALE | CONTROL PANEL MANUAL B.P. | ZAN 80L GAS untill sn136 |
| 7 | 83089G706 | 0C8397 | CRUSCOTTO BRAS. MANUALE | CONTROL PANEL MANUAL B.P. | ZAN 80L GAS from sn137 |
| 7 | 83089G800 | * | CRUSCOTTO BRAS. AUTOMATICA | CONTROL PANEL AUTOMATIC B.P. | ZAN 80L GAS untill sn136 |
| 7 | 83089G806 | 0C8398 | CRUSCOTTO BRAS. AUTOMATICA | CONTROL PANEL AUTOMATIC B.P. | ZAN 80L GAS from sn137 |
| 7 | 83089G900 | * | CRUSCOTTO BRAS. AUTOMATICA | CONTROL PANEL AUTOMATIC B.P. | ZAN - 100L – GAS |
| 7 | 83089G906 | 0C8399 | CRUSCOTTO BRAS. AUTOMATICA | CONTROL PANEL AUTOMATIC B.P. | ZAN - 100L – GAS |
| 7 | 83089GA00 | * | CRUSCOTTO BRAS. MANUALE | CONTROL PANEL MANUAL B.P. | ZAN 80L EL untill sn136 |
| 7 | 83089GA06 | 0C8400 | CRUSCOTTO BRAS. MANUALE | CONTROL PANEL MANUAL B.P. | ZAN 80L EL from sn137 |
| 7 | 83089GB00 | 0C7953 | CRUSCOTTO BRAS. AUTOMATICA | CONTROL PANEL AUTOMATIC B.P. | ZAN 80L EL untill sn136 |
| 7 | 83089GB06 | 0C7953 | CRUSCOTTO BRAS. AUTOMATICA | CONTROL PANEL AUTOMATIC B.P. | ZAN 80L EL from sn137 |
| 7 | 83089GC00 | * | CRUSCOTTO BRAS. MANUALE | CONTROL PANEL MANUAL B.P. | ZAN 100L EL untill sn136 |
| 7 | 83089GC06 | 0C8401 | CRUSCOTTO BRAS. MANUALE | CONTROL PANEL MANUAL B.P. | ZAN 100L EL from sn137 |
| 7 | 83089GD00 | * | CRUSCOTTO BRAS. AUTOMATICA | CONTROL PANEL AUTOMATIC B.P. | ZAN 100L EL untill sn136 |
| 7 | 83089GD06 | 0C7954 | CRUSCOTTO BRAS. AUTOMATICA | CONTROL PANEL AUTOMATIC B.P. | ZAN 100L EL from sn137 |
| 7 | 83089GF00 | * | CRUSCOTTO BRAS. MANUALE | CONTROL PANEL MANUAL B.P. | OEM 80L GAS untill sn136 |
| 7 | 83089GF07 | 0C8402 | CRUSCOTTO BRAS. MANUALE | CONTROL PANEL MANUAL B.P. | OEM 80L GAS from sn137 |
| 7 | 83089GG00 | * | CRUSCOTTO BRAS. AUTOMATICA | CONTROL PANEL AUTOMATIC B.P. | OEM 80L GAS untill sn136 |
| 7 | 83089GG07 | 0C8403 | CRUSCOTTO BRAS. AUTOMATICA | CONTROL PANEL AUTOMATIC B.P. | OEM 80L GAS from sn137 |
| 7 | 83089GH00 | * | CRUSCOTTO BRAS. MANUALE | CONTROL PANEL MANUAL B.P. | OEM 100L GAS untill sn136 |
| 7 | 83089GH07 | 0C8404 | CRUSCOTTO BRAS. MANUALE | CONTROL PANEL MANUAL B.P. | OEM 100L GAS from sn137 |

BRASIERA 80/100L E900 XP
BRATT PAN 80/100L E900 XP

| Pos | Factory Code | Spare Code | Descrizione | Description | Ref./Notes |
|-----------|------------------|---------------|-----------------------------|------------------------------|------------------------------|
| 7 | 83089GJ00 | * | CRUSCOTTO BRAS. AUTOMATICA | CONTROL PANEL AUTOMATIC B.P. | OEM 100L GAS untill sn136 |
| 7 | 83089GJ07 | 0C8405 | CRUSCOTTO BRAS. AUTOMATICA | CONTROL PANEL AUTOMATIC B.P. | OEM 100L GAS from sn137 |
| 7 | 83089GK00 | * | CRUSCOTTO BRAS. MANUALE | CONTROL PANEL MANUAL B.P. | OEM 80L EL from sn137 |
| 7 | 83089GK07 | 0C8407 | CRUSCOTTO BRAS. MANUALE | CONTROL PANEL MANUAL B.P. | OEM 80L EL untill sn136 |
| 7 | 83089GL00 | * | CRUSCOTTO BRAS. AUTOMATICA | CONTROL PANEL AUTOMATIC B.P. | OEM 80L EL from sn137 |
| 7 | 83089GL07 | 0C7955 | CRUSCOTTO BRAS. AUTOMATICA | CONTROL PANEL AUTOMATIC B.P. | OEM 80L EL untill sn136 |
| 7 | 83089GM00 | * | CRUSCOTTO BRAS. MANUALE | CONTROL PANEL MANUAL B.P. | OEM 100L EL untill sn136 |
| 7 | 83089GM07 | 0C8408 | CRUSCOTTO BRAS. MANUALE | CONTROL PANEL MANUAL B.P. | OEM 100L EL from sn137 |
| 7 | 83089GN00 | | CRUSCOTTO BRAS. AUTOMATICA | CONTROL PANEL AUTOMATIC B.P. | OEM 100L EL untill sn136 |
| 7 | 83089GN07 | 0C7956 | CRUSCOTTO BRAS. AUTOMATICA | CONTROL PANEL AUTOMATIC B.P. | OEM 100L EL from sn137 |
| 8 | 83089FQ00 | * | PANNELLO POSTERIORE RIPIANO | WORK TOP BACK PANEL | 100L – EL |
| 8 | 83089FT00 | * | PANNELLO POSTERIORE RIPIANO | WORK TOP BACK PANEL | 80L - EL |
| 8 | 83089FU00 | * | PANNELLO POSTERIORE RIPIANO | WORK TOP BACK PANEL | 100L - GAS |
| 8 | 83089FW00 | * | PANNELLO POSTERIORE RIPIANO | WORK TOP BACK PANEL | 80L – GAS |
| 9 | 50389W503 | 0CA935 | SCHIENALE BASE | BASE BACK PANEL | 100L – EL |
| 9 | 50389W603 | 0CA493 | SCHIENALE BASE | BASE BACK PANEL | 80L - EL |
| 9 | 50389VZ04 | * | SCHIENALE BASE | BASE BACK PANEL | 100L - GAS |
| 9 | 5038A0W04 | * | SCHIENALE BASE | BASE BACK PANEL | 80L – GAS |
| 10 | 50389XP01 | 0CA170 | SCHENALE MONOBLOCCO | BACK PANEL | 100L – EL and GAS |
| 10 | 538844802 | 0CA494 | SCHENALE MONOBLOCCO | BACK PANEL | 80L – EL and GAS |
| 11 | 50389N403 | * | FIANCO BASE SINISTRO | SIDE PANEL, LEFT | |
| 12 | 50389W301 | * | PANNELLO ANTERIORE | FRONT PANEL | 100L |
| 12 | 50389W401 | * | PANNELLO ANTERIORE | FRONT PANEL | 80L |
| 13 | 50389N303 | * | FIANCO BASE DESTRO | SIDE PANEL, RIGHT | |
| 14 | 50389N002 | * | PANNELLO COPERTURA BASE | COVER PANEL | 100L – EL |
| 14 | 50389N102 | 0CB292 | PANNELLO COPERTURA BASE | COVER BASE PANEL | 80L – EL |
| 14 | 5038A1R03 | * | PANNELLO COPERTURA BASE | COVER BASE PANEL | 100L - GAS |
| 14 | 5038A1S03 | 0CA739 | PANNELLO COPERTURA BASE | COVER BASE PANEL | 80L - GAS |
| 15 | 835856900 | 0C0204 | PIEDE | FOOT | |
| 15 | 806844600 | 0C3324 | PIEDE MARINE | MARINE FOOT | v2,w2 |
| 16 | 541813C00 | 0C8680 | PROTEZIONE CERNIERA | HINGE COVER | |
| 17 | 315252601 | 026806 | PIEDINO IN GOMMA | FOOT RUBBER | |
| 18 | 50389LP00 | 0C7333 | GRIGLIA CAMINO L. 400 mm | CHIMNEY GRIDS 400 mm | GAS |
| 18 | 50389LQ00 | 0C7569 | GRIGLIA CAMINO L. 200 mm | CHIMNEY GRIDS 200 mm | GAS |
| 19 | 51489BC00 | 0CB136 | BOCCOLA COPERCHIO | LID BUSH | |
| 50 | 85589CC01 | 0C7406 | ASSIEME LEVA SOLLEVAMENTO | LEVEL, TILTING | |
| 51 | 516864901 | 0C4332 | SUPPORTO CUSCINETTO | BEARING SUPPORT | |
| 52 | 835834700 | 056820 | CUSCINETTO RADIALE | RADIAL BEARING | |
| 53 | 85589CD00 | 0C7399 | ASSIEME PUNTONE | STRUT | |
| 54 | 51489B902 | 0C7891 | VITE | SCREW | |
| 55 | 516865301 | 0C0675 | MADREVITE | DIE | |
| 56 | 51489BA00 | 0C8518 | PULEGGIA | PULLEY | |
| 57 | 835834600 | 056821 | CUSCINETTO ASSIALE | AXIAL BEARING | |
| 58 | 51489BF01 | 0C7895 | ANELLO ARRESTO VITE | SCREW RING | |

BRASIERA 80/100L E900 XP
BRATT PAN 80/100L E900 XP

| Pos | Factory Code | Spare Code | Descrizione | Description | Ref./Notes |
|-----------|-------------------|---------------|-------------------------------------------|-------------------------------------|------------------------------------------------------------------------------------------|
| 59 | 51489BP00 | 0C7798 | SUPPORTO VITE | SCREW SUPPORT | |
| 60 | 214126800 | 051365 | PERNO | PIN | |
| 61 | 51489B600 | 0C7407 | PERNO | PIN | |
| 62 | 51489B701 | 0C7408 | BOCCOLA PER PUNTONE | BUSH | |
| 63 | 611809A00 | 0C7401 | MOTORIDUTTORE | MOTOREDUCER | AUTOMATIC |
| 64 | 51489BB00 | 0C8352 | ASTA MICRO COPERCHIO | SHAFT FOR COVER MICRO | |
| 65 | 516865201 | 0C0666 | MOLLA PER COPERCHIO | PRING LID | |
| 66 | 51489BD00 | 0C8519 | PULEGGIA MOTORE | PULLEY, MOTOREDUCER | AUTOMATIC |
| 67 | 547800100 | 002148 | CINGHIA | BELT, MOTOR | AUTOMATIC |
| 68 | 50689BJ01 | 0C8521 | SUPPORTO MOTORE | SUPPORT, MOTOR | AUTOMATIC |
| 69 | 50689BK01 | 0C8520 | FISSAGGIO MOTORE | FIXING, MOTOR | AUTOMATIC |
| 70 | 835829000 | 0A5164 | VOLANTINO | CRANK | MANUAL (and auto- matic accessory) |
| 71 | A05144900 | 0A2551 | OCCHIELLO | SCREW, SPRING | |
| 72 | 51489DQ01 | 0C9993 | GETTO EROGATORE | TAP, WATER | |
| 73 | 544819400 | 0C5829 | TUBO EPDM | EPDM PIPING | |
| 74 | 516871100 | 0C1438 | PROLUNGA VOLANTINO | EXTENSION CRANK | AUTO; b,d,f,h,m,o,q,s, b1, d1,f1,h1,o1,q1,s1, u1,b2,d2,f2,h2,m2, o2,q2,s2,v2 |
| 75 | 51489BG01 | 0C7563 | PROLUNGA VOLANTINO | EXTENSION CRANK | MANUAL; a,c,e,g,l, n,p,r,a1,c1,e1g1,n1, p1,r1,t1,a2,c2,e2, g2,l2,n2,p2,r2,t2,w2 |
| 76 | 0A05214500 | 0C2170 | SPINA ELASTICA 4x36 | ELASTIC SPINE 4x36 | |
| 77 | 0219702241 | 0C4354 | SPINA ELASTICA 4x24 | ELASTIC SPINE 4x24 | |
| | | | | | |
| 100 | 617839A00 | 0C7411 | RESISTENZA 8,5 kW | HEATING ELEMENT 8,5KW | 100L – EL |
| 100 | 617839B00 | 0C8351 | RESISTENZA 6,5 kW | HEATING ELEMENT 6,5KW | 80L – EL |
| 100 | 61783A800 | 0CA610 | RESISTENZA 6,5 kW | HEATING ELEMENT 6,5KW | u2 from 6031 - w2 |
| 101 | 831857800 | 0C7421 | TERMOCOPPIA | THERMOCOUPLE | Tech. Bull. PDX2014-06 |
| 102 | 50489JB02 | 0C9876 | SUPPORTO RESISTENZA | HEATING ELEMENT SUPPORT | EL |
| 103 | 50689BH01 | 0CA106 | PIASTRINA FISSAGGIO Sonda LIMITA- TORE | FIXING PLATE SAFETY THERM. PROBE | |
| 104 | 640800800 | 053671 | MICROINTERRUTTORE | MICROSWITCH | |
| 105 | 246214023 | 045404 | PIASTRINA ISOLANTE | INSULATION PLATELET | AUTOMATIC |
| 106 | 641805201 | 0C7415 | INTERRUTTORE+POTENZIOMETRO | SWITCH + POTENTIOMETER | Untill 4-39- Tech. Bull. PDX2014-05 |
| 106 | 641805900 | 0C9939 | INTERRUTTORE+POTENZIOMETRO | SWITCH + POTENTIOMETER | From 4-40- Tech. Bull. PDX2014-05 |
| 107 | 648807400 | 006879 | CONTATTORE K3 18A | CONTACTOR | EL |
| 108 | 675860002 | 0C7416 | SCHEDA CONTROLLO TERMOCOPPIE | THERMOCOUPLE BOARD | Untill 4-39- Tech. Bull. PDX2014-05 |
| 108 | 675860004 | 0C9995 | SCHEDA CONTROLLO TERMOCOPPIE | THERMOCOUPLE BOARD | From 4-40- Tech. Bull. PDX2014-05 |
| 109 | 639806600 | 006854 | MORSETTIERA | TERMINAL BOARD | EL |
| 109 | 639813400 | 0C7562 | MORSETTIERA | TERMINAL BOARD | GAS |
| 110 | 544802200 | 0C2328 | PRESSACAVO | FAIRLEAD | GAS |
| 110 | 544802400 | 0C3528 | PRESSACAVO | FAIRLEAD | EL |
| 111 | 675830800 | 006147 | RADDRIZZATORE | RECTIFIER | AUTOMATIC |
| 112 | 696807401 | 0C4984 | ELETTROVALVOLA ACQUA | WATER VALVE | |
| 112a | | 0C8327 | TUBO CARICO ACQUA | WATER FLEXI PIPE | 2100MM WRAS & VDE / 10bar 3/4 F-F |

BRASIERA 80/100L E900 XP
BRATT PAN 80/100L E900 XP

| Pos | Factory Code | Spare Code | Descrizione | Description | Ref./Notes |
|------------|------------------|---------------|------------------------------|-----------------------------------|-------------------------------------------------|
| 113 | 624805601 | 006159 | TRASFORMATORE | TRASFORMER | AUTOMATIC |
| 113 | 624811A00 | 0CA580 | TRASFORMATORE | TRASFORMER | u2,v2,w2 |
| 114 | 652800401 | 056582 | PORTAFUSIBILE | FUSE HOLDER | |
| 114 | 652806800 | * | PORTAFUSIBILE | FUSE HOLDER | u2 |
| 115 | 452140500 | 057783 | FUSIBILE 5x20 | FUSE | |
| 115 | 652806700 | 0CB082 | FUSIBILE | FUSE | u2,v2 |
| 115 | 652802900 | * | FUSIBILE | FUSE | w2 |
| 116 | 640804D00 | 0C7559 | PULSANTE | PUSH BOTTON | Until 218 - TB PDX2012-02 |
| 116 | 640804D01 | 0C8677 | PULSANTE | PUSH BOTTON | From 219 / untill 405 – TB PDX2012-02 |
| 116 | 640804M00 | 0C8677 | PULSANTE | PUSH BOTTON | From 406 |
| 117 | 655800100 | 0C2587 | LENTE VERDE | GREEN LENS | SEE NOTE ART 120 |
| 117 | 655800200 | 0C2182 | LENTE ARANCIO | ORANGE LENS | SEE NOTE ART 120 |
| 118 | 543826400 | 0C2183 | OR | OR | |
| 119 | 527815500 | 0C2184 | PIASTRINA FISSAGGIO | FIXING FLANGE | |
| 120 | 660806900 | 0C2585 | LAMPADINA | LAMP | |
| * | 876800002 | 005010 | ASSIEME LAMPADA VERDE | COMPLETE LAMP, GREEN | |
| * | 876800102 | 005011 | ASSIEME LAMPADA ARANCIO | COMPLETE LAMP, ORANGE | |
| 121 | 50489JH01 | 0CBAB9 | PROTEZIONE COMP. EL. | ELECTRICAL CASE PROTECTION | |
| 122 | 646810102 | 005931 | LIMITATORE | SAFETY THERMOSTAT | GAS APPLIANCES |
| 122 | 646814700 | 0KL023 | LIMITATORE CLICSON | SAFETY THERMOSTAT CLICSON | ELECTRIC APPLIANCES |
| 123 | 218912211 | 069567 | MOLLETTA PER GHIERA | RING, RING KNOB | |
| 124 | 511850G01 | 0C6670 | MANOPOLA | KNOB | ELX |
| 124 | 548878201 | 0C7232 | MANOPOLA | KNOB | ZAN |
| 124 | 548865500 | 0A5621 | MANOPOLA | KNOB | OEM |
| 125 | 548877V00 | 0C7345 | ADATTATORE MANOPOLA | KNOB ADAPTER | ELX |
| 126 | 543821000 | 053816 | GUARNIZIONE MANOPOLA | KNOB GASKET | |
| 127 | 54887A601 | 0C8194 | GHIERA | RING, KNOB | |
| 127 | 54887A900 | 0C8195 | GHIERA | RING, KNOB | |
| 128 | 541813800 | 0C6171 | RONDELLA IN SILICONE | SILICONE WASHER | |
| 129 | 646814700 | 0KL023 | LIMITATORE | SAFETY THERMOSTAT | ELECTRIC |
| 130 | 50689BH01 | * | PIASTRINA FISSAGGIO CLICKSON | CLICKSON BRAKET | |
| 131 | 50489JT01 | * | PROTEZIONE CAVI | WIRING PROTECTION | EL |
| 132 | 507899P00 | * | COPERCHIO PROTEZIONE CAVI | COVER WIRING PROTECTION | EL |
| 133 | 569807M00 | 0C8674 | TUBETTO IN STEATITE | CERAMIC TUBE | Untill 4-39- Tech. Bull. PDX2014-06 |
| 133 | 569807S00 | 0C9994 | TUBETTO IN STEATITE | CERAMIC TUBE | From 4-40- Tech. Bull. PDX2014-06 |
| 134 | 0149800100 | 0C9989 | PASTA CONDUTTRICE | CONDUCTIVE PASTE | Tech. Bull. PDX2014-06 |
| 135 | 694400U00 | 0CB477 | FILTRO ANTIDISTURBO | FILTER | GAS DUPLEX |
| | | | | | |
| 150 | 83089FP03 | 0C7560 | BRUCIATORE | BURNER | A,B,C,D,A1,B1, C1,D1 up to 4381... |
| 150 | 83089F702 | 0C7420 | BRUCIATORE | BURNER | E,F,G,H,E1,F1,G1, H1,E2,F2,G2 up to 4381... |
| 150 | 83089JL02 | 0C9657 | BRUCIATORE | BURNER | A,B,C,D,A1,B1,C1, D1 from 4391... up to 5031... |

BRASIERA 80/100L E900 XP
BRATT PAN 80/100L E900 XP

| Pos | Factory Code | Spare Code | Descrizione | Description | Ref./Notes |
|------------|-------------------|---------------|----------------------------------------|------------------------------------------------|----------------------------------------------------------|
| 150 | 83089JM02 | 0C9156 | BRUCIATORE | BURNER | E,F,G,H,E1,F1,G1, H1,E2,F2,G2 from 4391... up to 5031... |
| 150 | 83089FP04 | 0CA195 | BRUCIATORE | BURNER | A,B,C,D,A1,B1,C1, D1,t2 from 5041... |
| 150 | 83089F705 | 0CA196 | BRUCIATORE | BURNER | E,F,G,H,E1,F1,G1, H1,E2,F2,G2 from 5041... |
| 151 | 51589AK01 | 0C7886 | CONDUTTURA GAS | PIPING GAS | GAS |
| 152 | 80589AS01 | 0C7417 | TUBO ENTRATA GAS | INLET PIPING GAS | GAS |
| 153 | 51589AC00 | 0C7410 | MANICOTTO | COUPLING | GAS UP TO 46/2011 |
| 154 | 511805801 | 059375 | CONDOTTO GAS | NUT | GAS UP TO 46/2011 |
| 155 | 835876101 | 0C7409 | GIUNTO ROTANTE | ROTATING CONNECTION | GAS |
| 156 | 511805401 | 059250 | PORTAUGELLO | NOZZLE HOLDER | GAS UP TO 46/2011 |
| 157 | 517808200 | 002341 | BOCCOLA REGOLAZIONE ARIA | BUSHING FOR AIR REGULATION | GAS 80 LT |
| 157 | 215086000 | 051774 | BOCCOLA REGOLAZIONE ARIA | BUSHING FOR AIR REGULATION | GAS 100 LT |
| 158 | 83089FM00 | 0C7600 | VALVOLA GAS | GAS VALVE | GAS |
| 159 | 624811700 | 0C8189 | CENTRALINA CONTROLLO FIAMMA | GAS VALVE BOARD | GAS |
| 160 | 50489JD03 | 0C8723 | SCATOLA TERMOCOPPIA | BOX FOR THERMOCOUPLE | GAS |
| 161 | 83089F501 | 0C7419 | CANDELINA ACCENSIONE | IGNITION ROD | GAS |
| 162 | 83089F401 | 0C7418 | CANDELINA RILEVAZIONE | CHECK FLAME ROD | GAS |
| 163 | 624804700 | 004240 | ACCENDITORE | IGNITION BOARD | GAS |
| 164 | 275290025 | 057400 | VETRINO | SLIDE | GAS |
| 165 | 206260400 | 057382 | CORNICE PER VETRINO | FRAME FOR SLIDE | GAS |
| 166 | 214105101 | 020997 | CONTRODADO | NUT | GAS |
| 167 | 543844L00 | 0C7561 | GUARNIZIONE ACQUA | WATER GASKET | GAS |
| 168 | 50589D702 | 0CB846 | PROTEZIONE INTERNA | INTERNAL PROTECTION | GAS |
| 169 | 50589D600 | * | PROTEZIONE ESTERNA | EXTERNAL PROTECTION | GAS |
| 170 | 50489L001 | * | PROTEZIONE ENTRATA CAVI | INLET WIRING PROTECTION | GAS |
| 171 | 516847000 | * | DADO | NUT | GAS |
| 172 | 515801715 | 052671 | OGIVA | OGIVA | GAS |
| 173 | * | * | CABLAGGIO ELETTRICO | WIRING HARNESS | Request with pnc code |
| 174 | * | OTTK93 | CABLAGGIO DA SCHEDA/POTENZI-OMETRO | CABLE FROM POTENZIOMETER TO THERMOCOUPLE BOARD | PDX 2014-05 |
| 175 | 51589AQ00 | 0C8359 | CONDUTTURA VALVOLA | GAS PIPE VALVE | FROM WK47 2011 |
| 176 | 51589AR00 | 0C8360 | CONDUTTURA BRUCIATORE | GAS PIPE , BURNER | FROM WK47 2011 |
| 177 | 80589BB01 | 0C8354 | TUBO FLESSIBILE | FLEXIBLE GAS PIPE | FROM WK47 2011 |
| 178 | 214108111 | 041155 | DADO | NUT | FROM WK47 2011 |
| 179 | 215073101 | 060325 | OGIVA BICONO | NOSE CONE | FROM WK47 2011 |
| 180 | 51489C000 | 0C8355 | ADATTATORE PER UGELLO | NOZZEL ADAPTOR | FROM WK47 2011 |
| 181 | 50589F900 | 0C9066 | PROTEZIONE TERMOCOPPIA | THERMOCOUPLE PROTECTION | UP TO 439 PDX 2014-06 |
| 181 | 50589HJ00 | 0C9996 | PROTEZIONE TERMOCOPPIA | THERMOCOUPLE PROTECTION | FROM 440 PDX 2014-06 |
| 182 | 50489ND01 | 0CB842 | CAMERA DI COMBUSTIONE | COMBUSTION CHAMBER | 80 LT GAS |
| 182 | 50489NC01 | 0CB247 | CAMERA DI COMBUSTIONE | COMBUSTION CHAMBER | 100 LT GAS |
| 183 | 050589F102 | 0TTMOM | CONVOGLIATORE ARIA | AIR CONVEYOR | GAS |
| 184 | 050589D000 | 0CC000 | PARETE POST. CAMERA COMBUSTIONE | COMBUSTION CHAMBER BACK SIDE | 80LT |
| 184 | 050589C400 | 0CB969 | PARETE POST. CAMERA COMBUSTIONE | COMBUSTION CHAMBER BACK SIDE | 100LT |
| 185 | 050589Q800 | | TRAVERSA CAMERA DI COMBUSTIONE | COMBUSTION CHAMBER CROSSBEAM | 80LT |
| | | | | | |
| * | 080589FC00 | 0CB801 | KIT WATERMARK | WATERMARK KIT | |