

**Modular Platform**

Viale Treviso, 15  
33170 Pordenone - Italy  
Fax: +39 0434-380577

**CUCINE ELETTRICHE PIASTRE QUADRE N700**  
**HOT SQUARE PLATE ELECTRIC RANGE N700**

| Code    | Type      | Ref. | Page | Note  |
|---------|-----------|------|------|---|
| 178 618 | TC/E2Q    | a    | 1-4  | 4-Hot Square Plate Electric Boiling Top 800 MM        |
| 178 619 | TCF/E2Q   | b    | 1-4  | 4-Hot Square Plate Electric Range +Oven 800MM         |
| 178 620 | TCV/E2Q   | c    | 1-4  | 4-Hot Square Plate Electric Range +Base 800 MM        |
| 178 627 | TC/E2QE5  | d    | 1-4  | 4-Hot Square Plate Electric Boiling Top 800 MM - 230V |
| 178 628 | TCF/E2QE5 | e    | 1-4  | 4-Hot Square Plate Electric Range +Oven 800MM - 230V  |

Pag. 1-2  
3-4

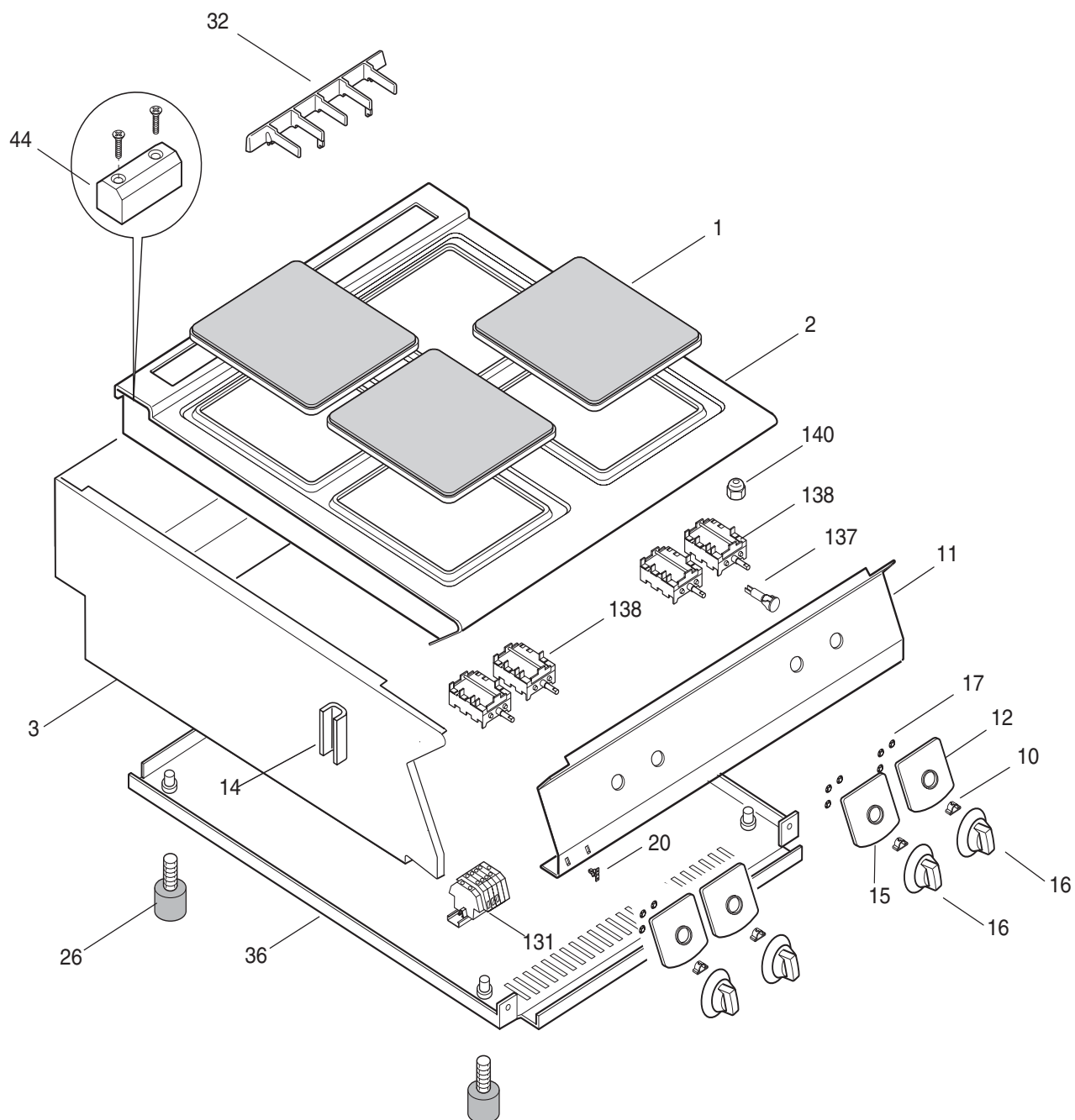
**Indice**

Mobile e imp.elettrico  
Lista ricambi

**Index**

Structure and electric components  
Spare parts list

**Marchio / Brand:** Electrolux  
**Factory code:** 9PDX



CUCINA ELETTRICA PIASTRE QUADRE N700  
HOT SQUARE PLATE ELECTRIC RANGE N700



**CUCINE ELETTRICHE PIASTRE QUADRE N700**  
**HOT SQUARE PLATE ELECTRIC RANGE N700**

| Code    | Type      | Ref. | Note  |
|---------|-----------|------|---|
| 178 618 | TC/E2Q    | a    | 4-Hot Square Plate Electric Boiling Top 800 MM        |
| 178 619 | TCF/E2Q   | b    | 4-Hot Square Plate Electric Range +Oven 800MM         |
| 178 620 | TCV/E2Q   | c    | 4-Hot Square Plate Electric Range +Base 800 MM        |
| 178 627 | TC/E2QE5  | d    | 4-Hot Square Plate Electric Boiling Top 800 MM - 230V |
| 178 628 | TCF/E2QE5 | e    | 4-Hot Square Plate Electric Range +Oven 800MM - 230V  |

| Pos | Factory Code | CODICE | Descrizione                     | Description                   | Ref. / Notes |
|-----|--------------|--------|---------------------------------|-------------------------------|--------------|
| 1   | 0617821900   | 006220 | PIASTRA ELETTRICA 2600W 220V    | COOKING PLATE 2600W 220V      |              |
| 2   | 0873885900   | 0C4608 | RIPIANO 800mm                   | TABLE TOP 800mm               |              |
| 3   | 0530866900   | *      | RIVESTIMENTO LATERALE TOP 800MM | EXTERNAL PANEL TOP 800MM      | a d          |
|     | 0530867900   | *      | RIVESTIMENTO LATERALE 800MM     | EXTERNAL PANEL 800MM          | b c e        |
| 4   | 0529850500   | 0C0182 | PIASTRINA FACCIAATA-FIANCO      | PLATE JOINTING OVEN           | b e          |
| 5   | 0560802203   | *      | ISOLAMENTO FORNO DX- SX         | INSULATION OVEN               | b e          |
| 6   | 0507861301   | 059233 | GRIGLIA PROTEZIONE BULBO        | PROTECTION PROBE              | b e          |
| 7   | 0533814000   | 0C2700 | GUIDA X GRIGLIA                 | GRATE LEADING                 | b e          |
| 8   | 0330260842   | 025020 | GRIGLIA FORNO                   | GRATE OVEN                    | b e          |
| 9   | 0500850001   | 054144 | SUOLA FORNO                     | SOLE PLATE                    | b e          |
| 10  | 0214590701   | 025245 | MOLLETTA MANOPOLA               | SPRING, KNOB                  |              |
| 11  | 0853886001   | 0C2049 | CRUSCOTTO 800mm (MONOBLOCCO)    | CONTROL PANEL 800mm (FREEST.) | b e          |
|     | 0853885901   | 0C2048 | CRUSCOTTO 800mm                 | CONTROL PANEL 800mm           | a c d        |
| 12  | 0548862701   | 0C2017 | GHIERA PIASTRA ELET. ANTERIORE  | KNOB RING, FRONT COOK.PLATE   |              |
|     | 0548863001   | 0C2018 | GHIERA PIASTRA ELET. POSTERIORE | KNOB RING, REAR COOK.PLATE    |              |
| 14  | 0527850500   | 0C0156 | PIASTRA FISSAGGIO FIANCHI       | SIDE PANELS JOINTING PLATE    |              |
| 16  | 0548860100   | 0C2012 | MANOPOLA COMMUTATORE PIASTRA    | KNOB, COOKING PLATE SWITCH    |              |
|     | 0548860800   | 0C2015 | MANOPOLA TERMOSTATO             | KNOB, THERMOSTAT              | b e          |
|     | 0548860700   | 0C2014 | MANOPOLA COMMUTATORE FORNO      | KNOB, OVEN COMMUTATOR         | b e          |
| 17  | 0218912211   | 069567 | MOLLETTA PER GHIERA             | SPRING, KNOB RING             |              |
| 20  | 0518801801   | 053342 | MOLLA PER MARCHIO               | SPRING, LABEL                 |              |
| 21  | 0831825200   | 0C2030 | MANIGLIA FORNO                  | HANDLE, OVEN                  | b e          |
| 22  | 0529837000   | 0C1234 | PORTA FORNO                     | OVEN DOOR                     | b e          |
| 23  | 0560839601   | 0C0197 | ISOLAMENTO PORTA FORNO          | INSULATION OVEN DOOR          | b e          |
| 24  | 0522882800   | 0C2694 | CONTROPORTA FORNO               | INNER DOOR                    | b e          |
| 25  | 0835848100   | 0C0203 | CERNIERA PORTA                  | HINGE                         | b e          |
| 26  | 0315252601   | 026806 | PIEDE                           | FOOT                          | a d          |
|     | 0835856900   | 0C0204 | PIEDE                           | FOOT                          | b c e        |
| 28  | 0508898900   | 0C0122 | PIASTRA DI RINFORZO             | STIFFENING PLATE              | b c e        |
| 29  | 0870838203   | 0C0218 | FACCIAATA FORNO                 | FRONT OVEN                    | b d          |
| 32  | 0510824700   | 0C4671 | GRIGLIA CAMINO                  | GRATE, CHIMNEY                |              |
| 33  | 0205075423   | 052725 | COPRICERNIERA                   | HINGE COVER                   | b d          |

**CUCINE ELETTRICHE PIASTRE QUADRE N700**  
**HOT SQUARE PLATE ELECTRIC RANGE N700**

| Code    | Type      | Ref. | Note  |
|---------|-----------|------|---|
| 178 618 | TC/E2Q    | a    | 4-Hot Square Plate Electric Boiling Top 800 MM        |
| 178 619 | TCF/E2Q   | b    | 4-Hot Square Plate Electric Range +Oven 800MM         |
| 178 620 | TCV/E2Q   | c    | 4-Hot Square Plate Electric Range +Base 800 MM        |
| 178 627 | TC/E2QE5  | d    | 4-Hot Square Plate Electric Boiling Top 800 MM - 230V |
| 178 628 | TCF/E2QE5 | e    | 4-Hot Square Plate Electric Range +Oven 800MM - 230V  |

| Pos | Factory Code | CODE   | Descrizione                  | Description                | Ref. / Notes |
|-----|--------------|--------|------------------------------|----------------------------|--------------|
| 35  | 0560840300   | 0C0261 | ISOLAMENTO ANTERIORE FORNO   | FRONT INSULATION OVEN      |              |
| 36  | 0533832302   | *      | FONDO TOP 800mm              | BOTTOM TOP PANEL 800mm     | a d          |
|     | 0530830804   | *      | FONDO 800 mm                 | BOTTOM PANEL 1200mm        | b e          |
|     | 0800835101   | *      | FONDOFORNO ELETTR. 800mm     | BOTTOM ELECTRIC OVEN       | c            |
| 37  | 0140088006   | 0L0113 | GUARNIZIONE PER CRUSCOTTO    | GASKET, CONTROL PANNEL     |              |
| 38  | 0214584201   | 066823 | MOLLA PER BULBO              | SPRING, BULB               |              |
| 39  | 0522883602   | *      | INVOLUCRO FORNO ELETTRICO    | OVEN SHELL                 | b e          |
| 40  | 0522882700   | *      | SCHIENALE FORNO ELETTRICO    | REAR SIDE PANEL OVEN       | b e          |
| 41  | 0533825300   | *      | ANTERIORE SFIATO VAPORI      | FRONT STEAM DRAIN          | b e          |
| 42  | 0533825400   | *      | POSTERIORE SFIATO VAPORI     | REAR STEAM DRAIN           | b e          |
| 43  | 0529835402   | 0C0165 | SUPPORTO CERNIERA            | HOLDER FOR HINGE           | b e          |
| 44  | 0516860701   | 0C0137 | PIASTRA GIUNZIONE POSTERIORE | JOINTING REAR PLATE        |              |
| 45  | 0516810900   | 002449 | TAPPO                        | COVERING PLUGS             | b e          |
| 46  | 0560802403   | *      | ISOLAMENTO CIELO             | TOP INSULATION             | b e          |
| 131 | 0A05714000   | 058613 | MORSETTIERA                  | MAIN TERMINAL BLOCK        | a d          |
|     | 0639806002   | 002691 | MORSETTIERA                  | MAIN TERMINAL BLOCK        | b c e        |
| 132 | 0646805302   | 059235 | TERMOSTATO                   | THERMOSTAT                 | b e          |
| 133 | 0641803700   | 0C0320 | COMMUTATORE                  | SWITCH                     | c e          |
| 134 | 0617832400   | 0C2813 | RESISTENZA FORNO 1500W 400V  | HEATING ELEMENT 1500W 400V | c            |
|     | 0617832500   | 0C3638 | RESISTENZA FORNO 1500W 230V  | HEATING ELEMENT 1500W 230V | e            |
| 135 | 0646808600   | 004600 | TERMOSTATO                   | THERMOSTAT                 | c e          |
| 136 | 0876800102   | 005011 | LAMPADA GIALLA TONDA         | YELLOW LAMP                | c e          |
| 137 | 0876800002   | 005010 | LAMPADE VERDE TONDA          | GREEN LAMP                 |              |
| 138 | 0641801900   | 059238 | COMMUTATORE 7 POSIZIONI      | SWITCH, 7 POSITION         |              |
| 139 | 0638896300   | 0C0311 | RESISTENZA DI DISPERSIONE    | LEAKAGE RESISTANCE         | c e          |
| 140 | 0246520500   | 050180 | PASSACAVO D 23               | CORE HITCH                 | a d          |
|     | 0544802300   | 0C0068 | PASSACAVO                    | CORE FITCH                 | b c e        |