

LAVASTOVIGLIE A CESTO TRASCINATO - 1 Vasca
RACK TYPE DISHWASHER - 1 Tank**RT 10 / RT 180 / WT 90 / NERT / HAB**

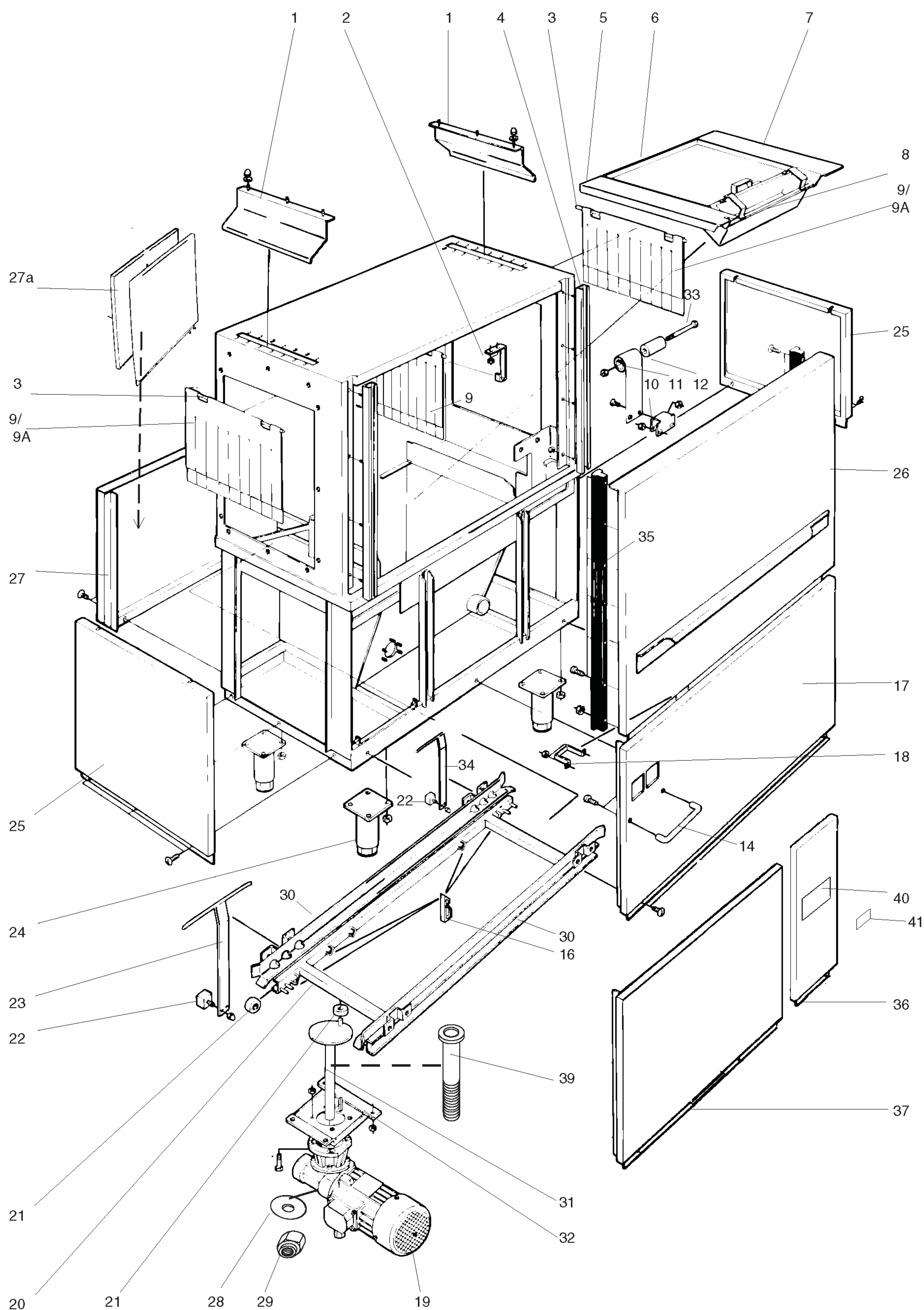
VERSIONI ELETTRICHE /ELETTRICAL VERSIONS										
Code	Type1	Type2 (From Ser. Nr: 006)	Ref.	Pagina/ Page		Code	Type1	Type2 (From Ser. Nr: 006)	Ref.	Pagina/ Page
531372	RT10ERCINA		e	2,3,4,5		533330	WT90ERC	NERT10ERC		2,3,4,5
531373	RT10ELCINA		f	2,3,4,5		533331	WT90ELC	NERT10ELC		2,3,4,5
531374	RT10ERROWH		a	2,3,4,5		533344	WT90ERCB	NERT10ERC		2,3,4,5
531375	RT10ELROWH		b	2,3,4,5		533345	WT90ELCB	NERT10ELCB		2,3,4,5
531376	RT10ERH		p	2,3,4,5		533368	WT90ERCINA		g	2,3,4,5
531377	RT10ELH		q	2,3,4,5		533369	WT90ELCINA		h	2,3,4,5
531378	RT10ERROW		i	2,3,4,5		533370	WT90ERROWH	NERT20ERH	c	2,3,4,5
531379	RT10ELROW		l	2,3,4,5		533371	WT90ELROWH	NERT20ELH	d	2,3,4,5
531380	RT10ERROW6		x	2,3,4,5		533372	WT90ERH		r	2,3,4,5
531381	RT10ELROW6		y	2,3,4,5		533373	WT90ELH		s	2,3,4,5
533300	WT90ER	NERT10ER		2,3,4,5		533374	WT90ERROW	NERT20ER	m	2,3,4,5
533301	WT90EL	NERT10EL		2,3,4,5		533375	WT90ELROW	NERT20EL	n	2,3,4,5
533312	WT90ERG	NERT10ERG		2,3,4,5		533376	WT90ERROW6	NERT20ER60	j	2,3,4,5
533313	WT90ELG	NERT10ELG		2,3,4,5		533377	WT90ELROW6	NERT20EL60	w	2,3,4,5
533314	WT90ERB	NERT10ERB		2,3,4,5		864141		HABER90ERT		6,7
533315	WT90ELB	NERT10ELB		2,3,4,5		864142		HABEL90ERT		6,7
533326	ET90ERCINA		t	2,3,4,5		864151		HABERERT		6,7
533327	ET90ELCINA		u	2,3,4,5		864153		HABELERT		6,7
533328	ET90ERROW		v	2,3,4,5						
533329	ET90ELROW		z	2,3,4,5						

VERSIONI VAPORE / STEAM VERSIONS										
Code	Type(From Ser. Nr: 011)		Ref.	Pagina/ Page		Code	Type(From Ser. Nr: 011)		Ref.	Pagina/ Page
533322	NERT10SR			2,3,4,5		864236	HABSRERT			6,7
533323	NERT10SL			2,3,4,5		864237	HABSLERT			6,7
533336	NERT20SR			2,3,4,5						
533337	NERT20SL			2,3,4,5						
533340	NERT10SRC			2,3,4,5						
533341	NERT10SLC			2,3,4,5						

Indice			Index		
Pagina/ Page	Illustr.	Descrizione		Description	
2	21315Z	Vasca e pannelli		Tank and panels	
3	21316B	Scarico ed impianto di lavaggio		Drain and wash system	
4	21317Ae	Componenti elettrici		Electric components	
5	21318z	Unità condensa fumane CU		Condensing Unit CU	
6	21301	Zona di asciugatura HUB		Hot Air Blower HAB	
7	21302	Zona di asciugatura HUB, Riscaldamento		Hot Air Blower HAB, Heating	
8 - 17		Lista ricambi		Spare parts list	

Marchio/ Brand: Tutti/ All
Paese/ Country: Tutti/ All

Da Ser.Nr./From Ser.nr.: 228 / ...	Doc. Nr.: 6-50 001A
Page: 1 Ed.2010-03	



ill. 21315Z

Vasca e pannelli

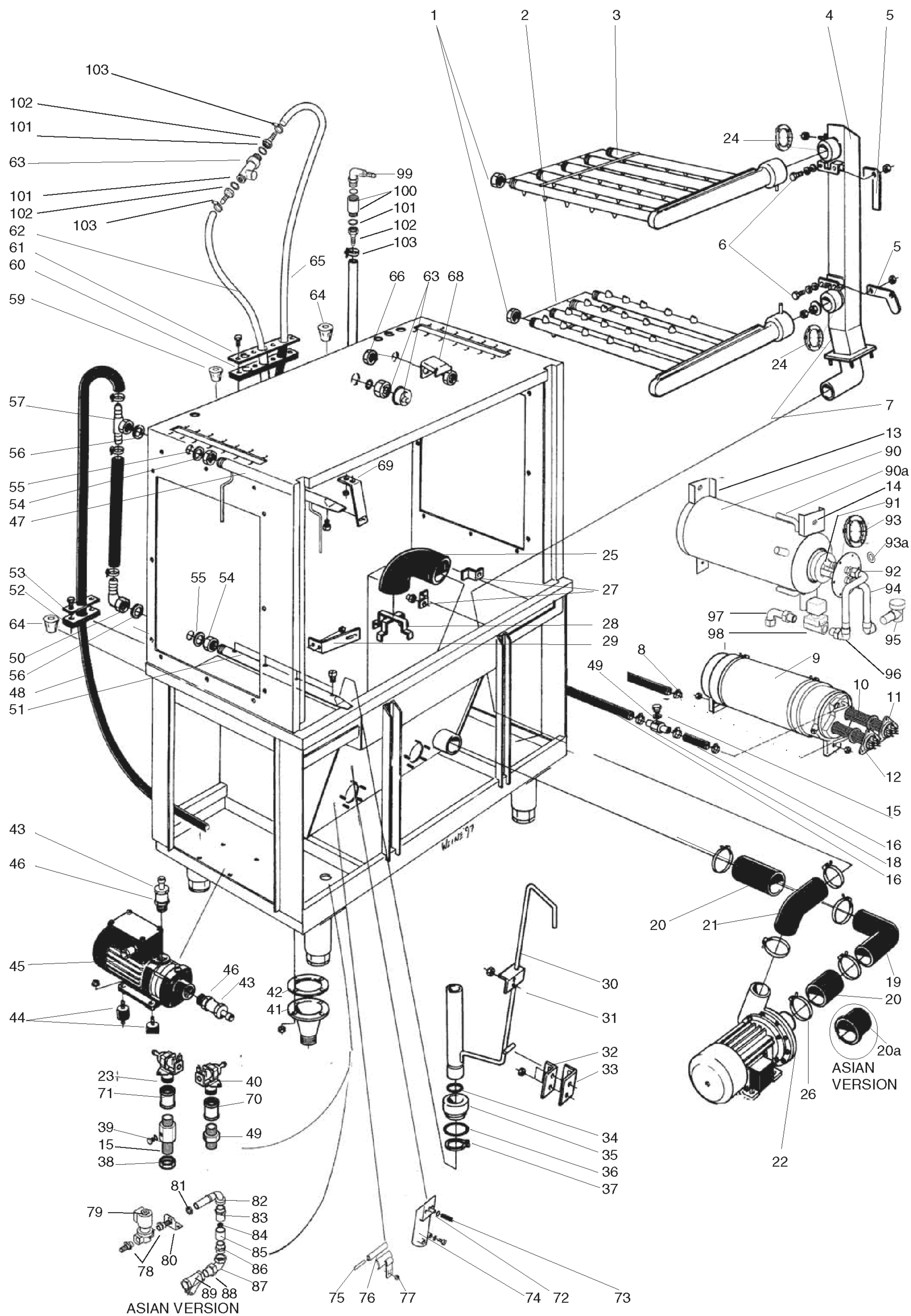
Tank and panels

Da Ser.Nr./From Ser.nr.: 228 /

Page: 2

Ed.2010-02

Doc. Nr.: 6-50 001A



ill. 21316B

Scarico ed impianto di lavaggio

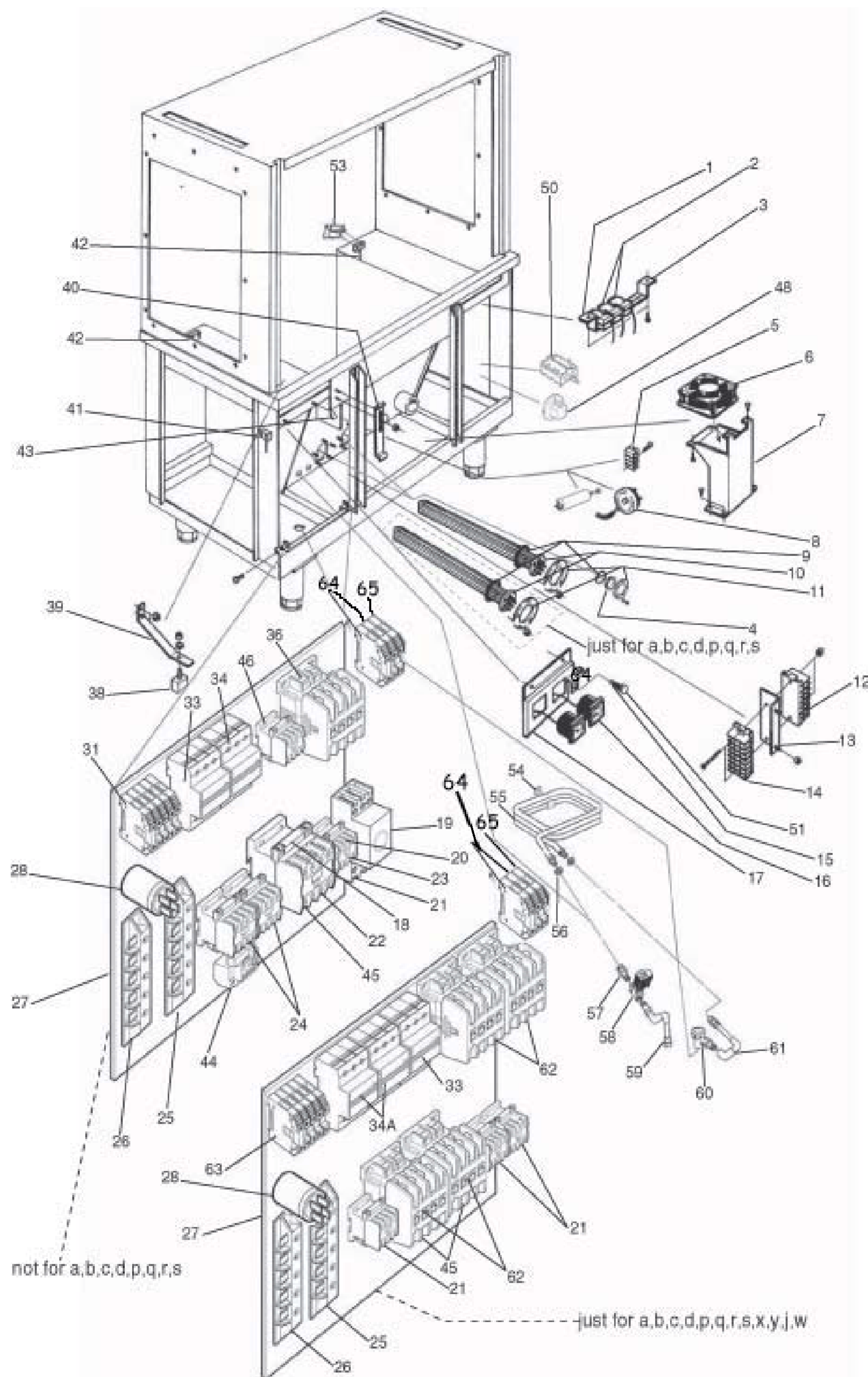
Drain and wash system

Da Ser.Nr./From Ser.nr.: 228 /

Page: 3

Ed.2006-05

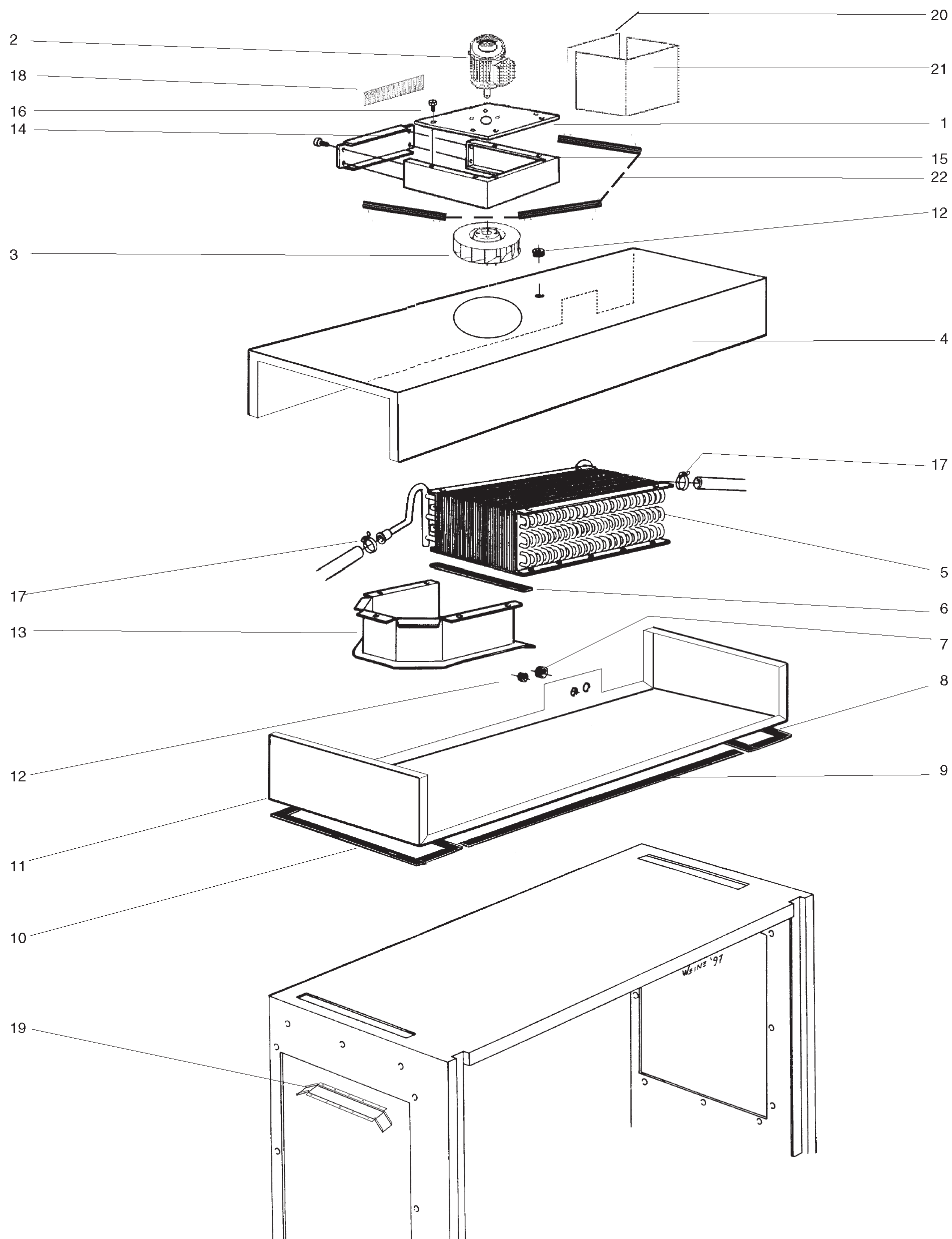
Doc. Nr.: 6-50 001A



ill. 21317Ae

Componenti elettrici

Electric components



ill. 21318z

Unità condensa fumane CU

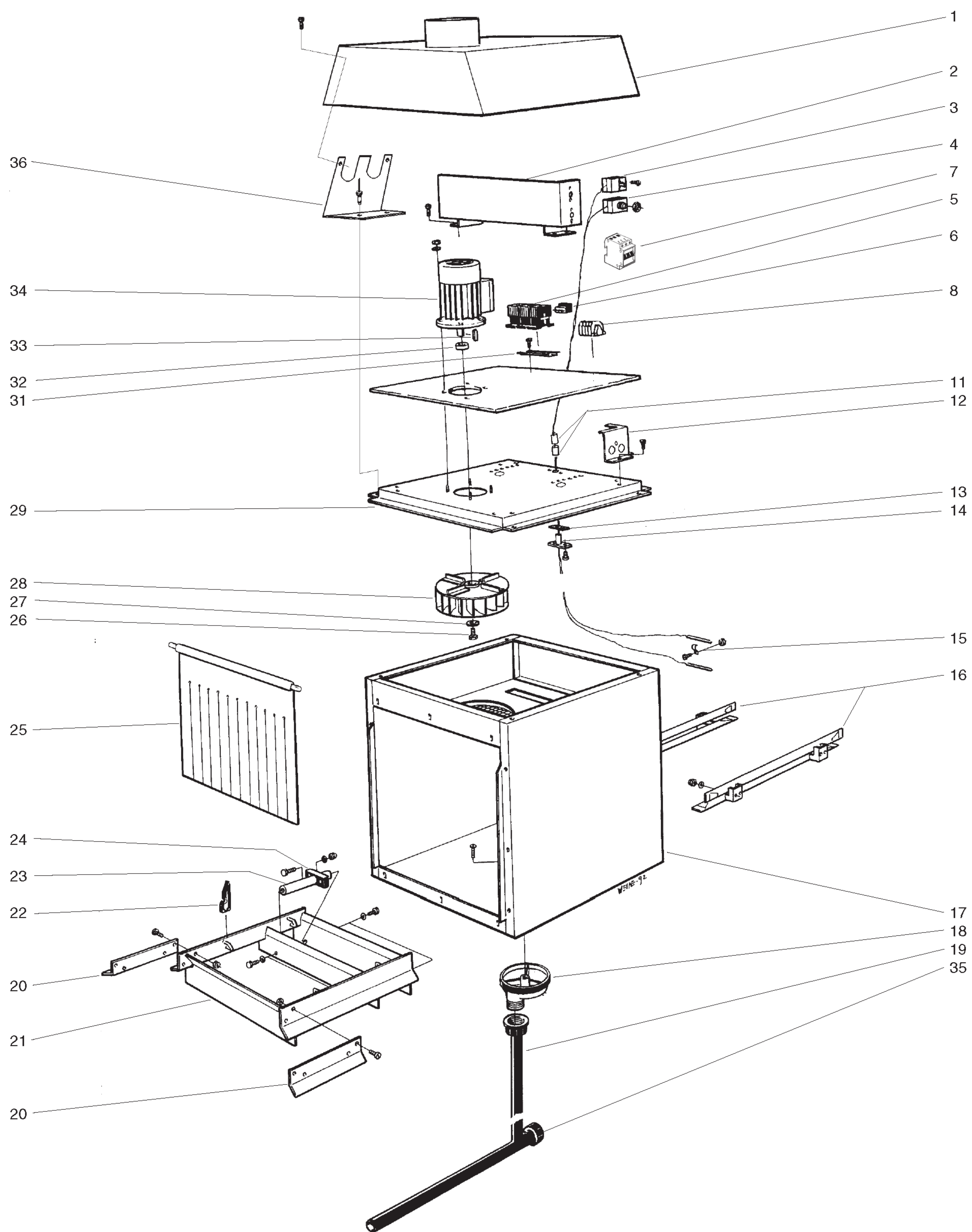
Condensing Unit CU

Da Ser.Nr./From Ser.nr.: 228 /

Page: 5

Ed.2002-07

Doc. Nr.: 6-50 001A



ill. 21301

Zona di asciugatura HUB

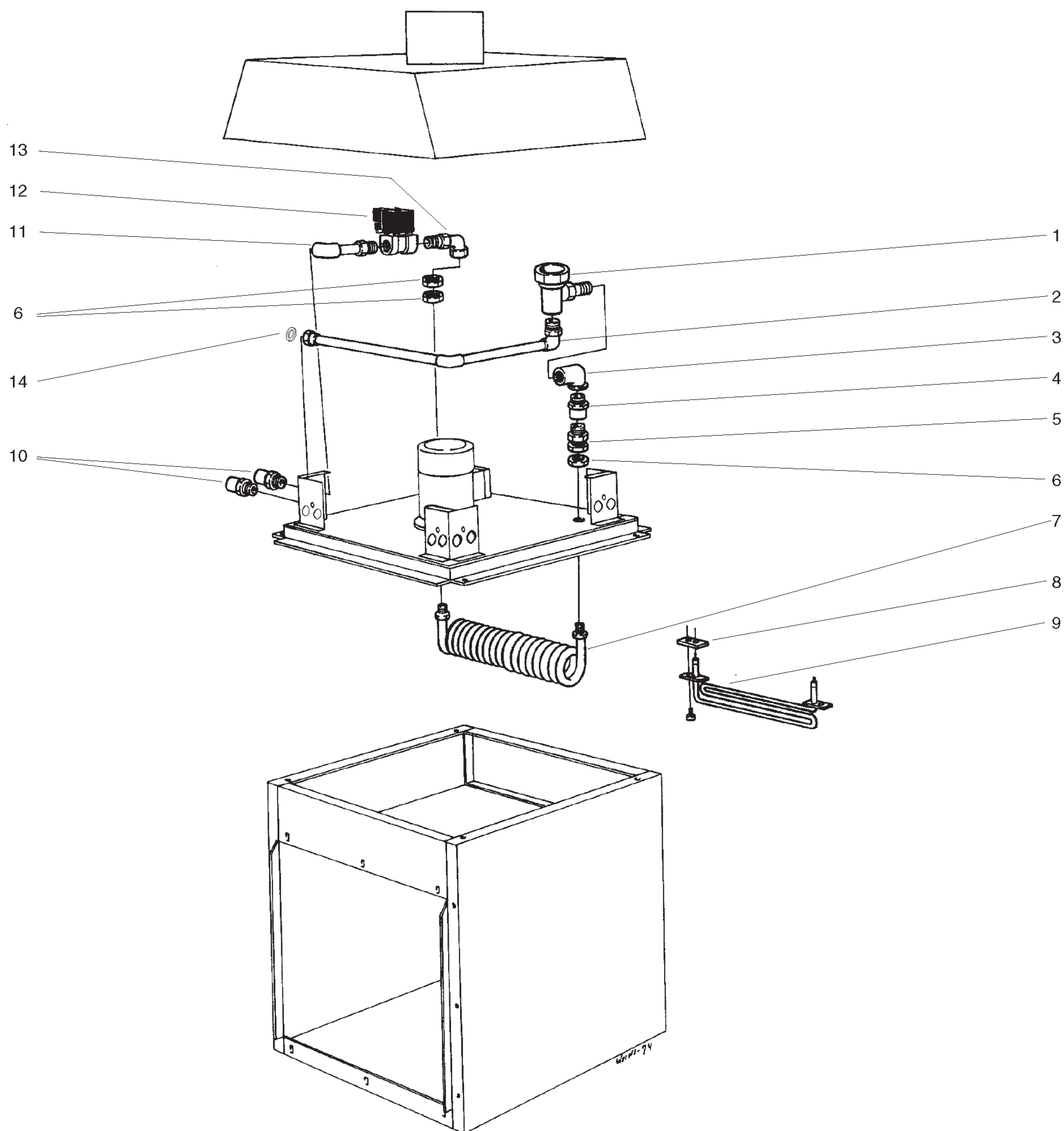
Hot Air Blower HAB

Da Ser.Nr./From Ser.nr.: 228 /

Page: 6

Ed.2003-01

Doc. Nr.: 6-50 001A



ill. 21302

Zona di asciugatura HUB, Riscaldamento

Hot Air Blower HAB, Heating

Da Ser.Nr./From Ser.nr.: 228 /

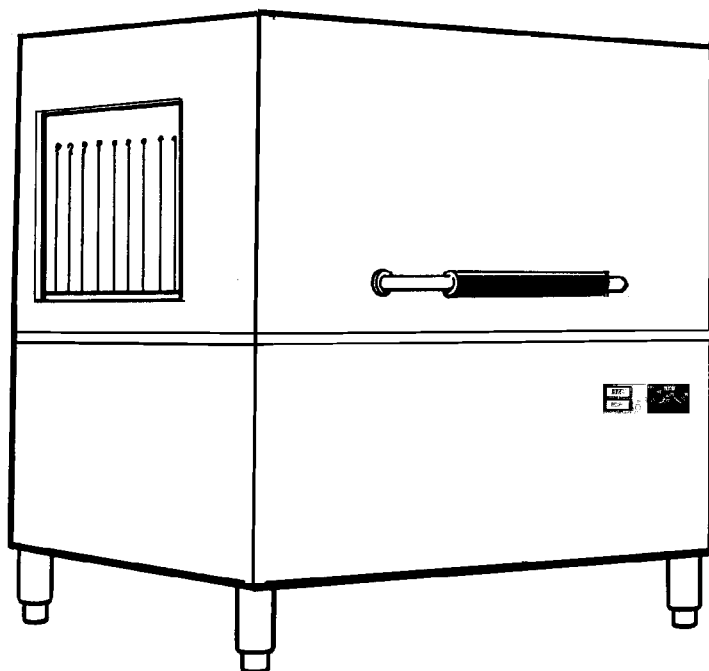
Page: 7

Ed.2003-01

Doc. Nr.: 6-50 001A

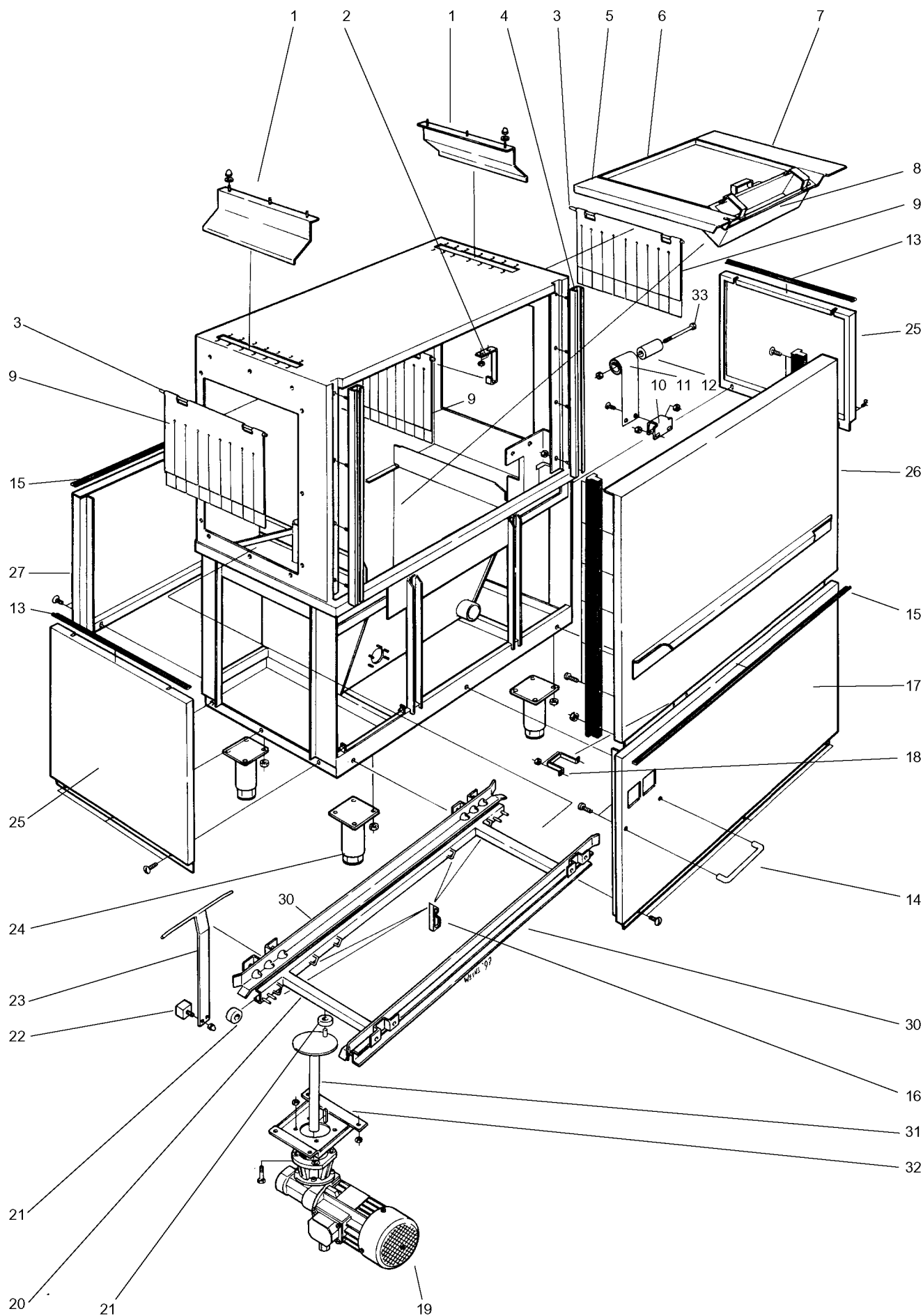
LAVASTOVIGLIE A CESTO TRASCINATO - 1 Vasca
RACK TYPE DISHWASHER - 1 Tank

RT 10 / RT 180 / Z 18 / WT 90
ELECTRIC HEATED

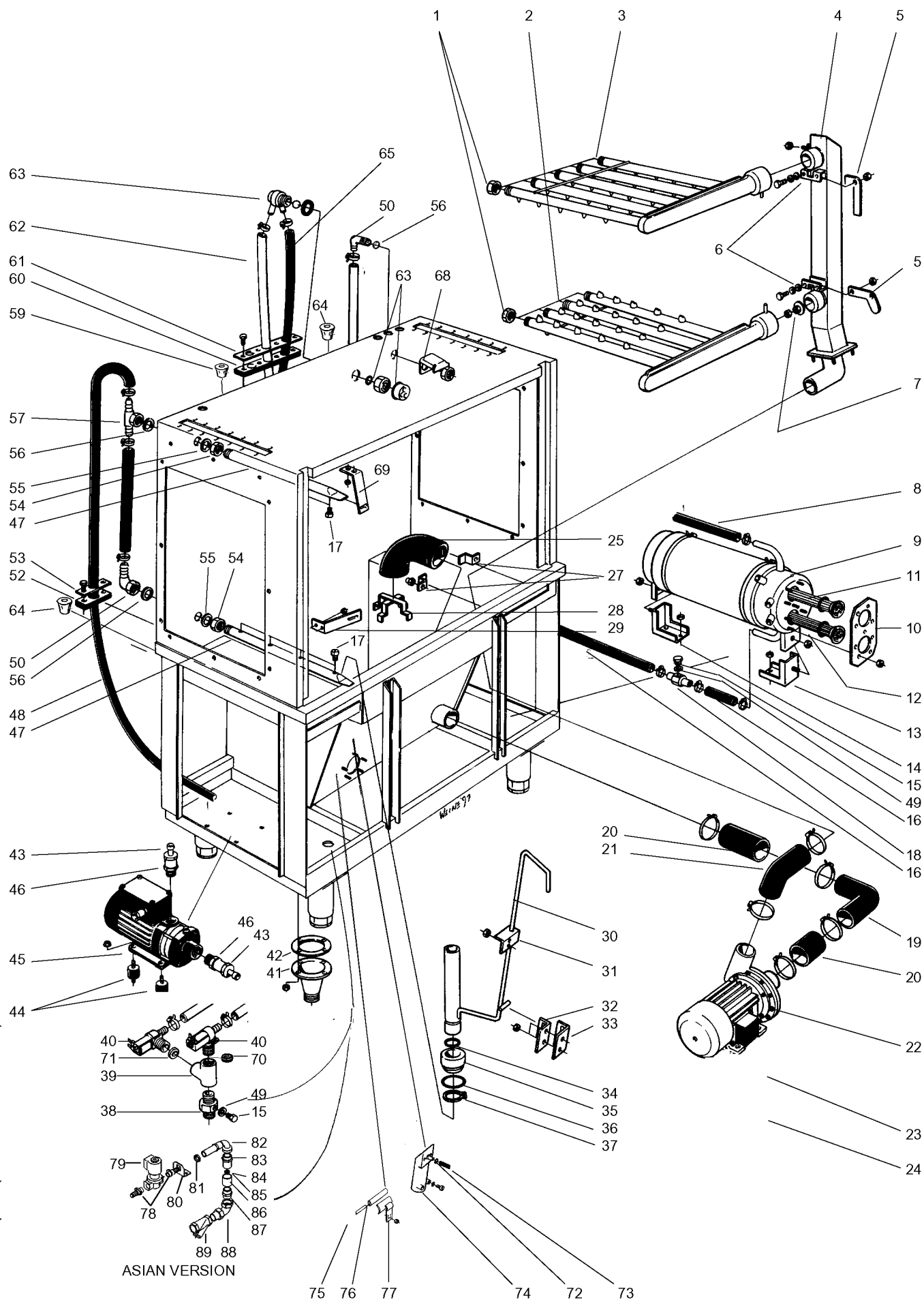


Pag.	Illustr.	Indice Descrizione	Index Description
2	21315	Vasca e pannelli	Tank and panels
3	21316	Scarico ed impianto di lavaggio	Drain and wash system
4	21317	Componenti elettrici	Electric components
5	21318	Unità condensa fumane CU	Condensing Unit CU
6-10		Lista ricambi	Spare part list

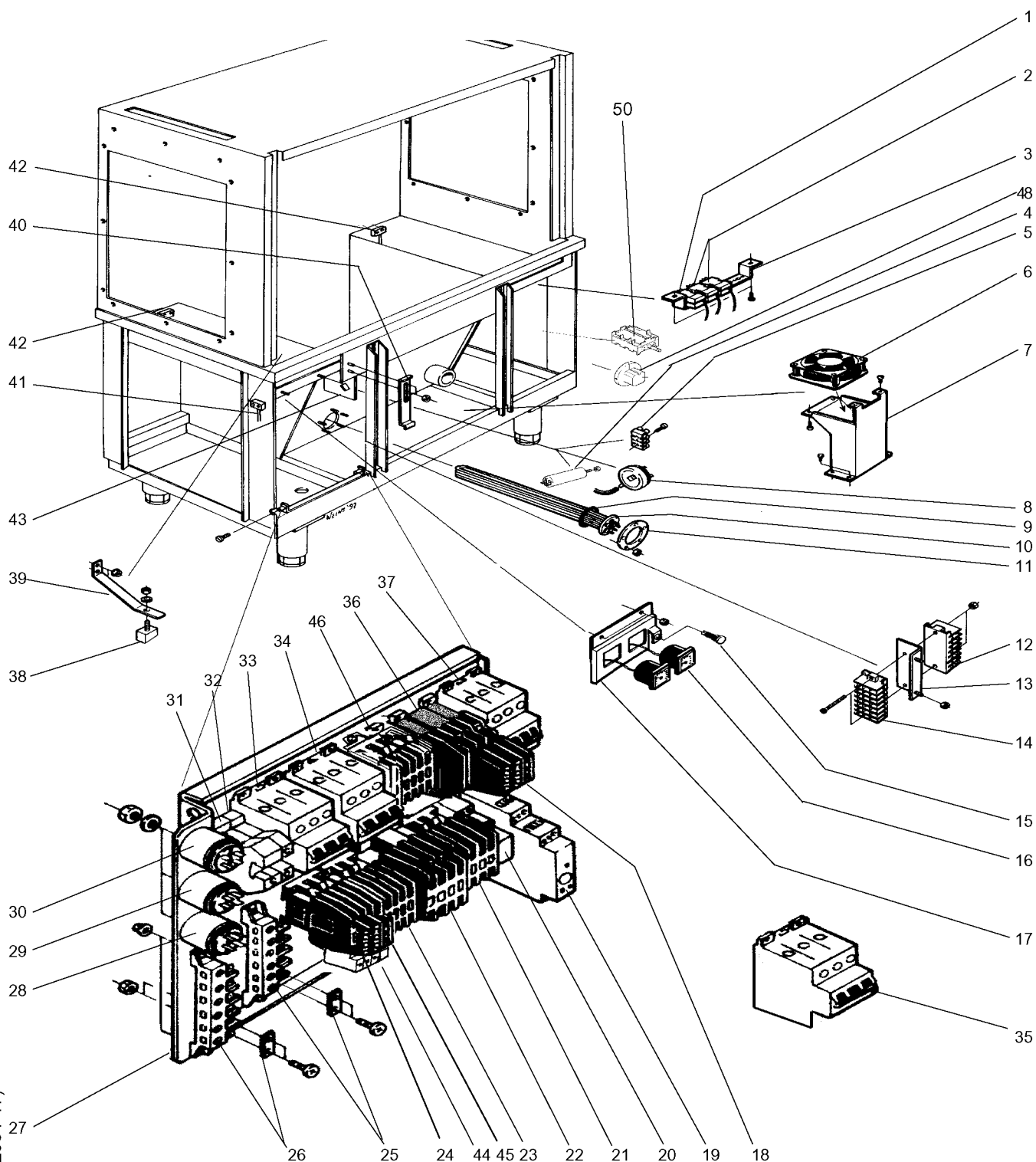
Marchio / Brand: Tutti / All
Paese / Country: Tutti / All



ill. 21315



ill. 21316a



ill. 21317

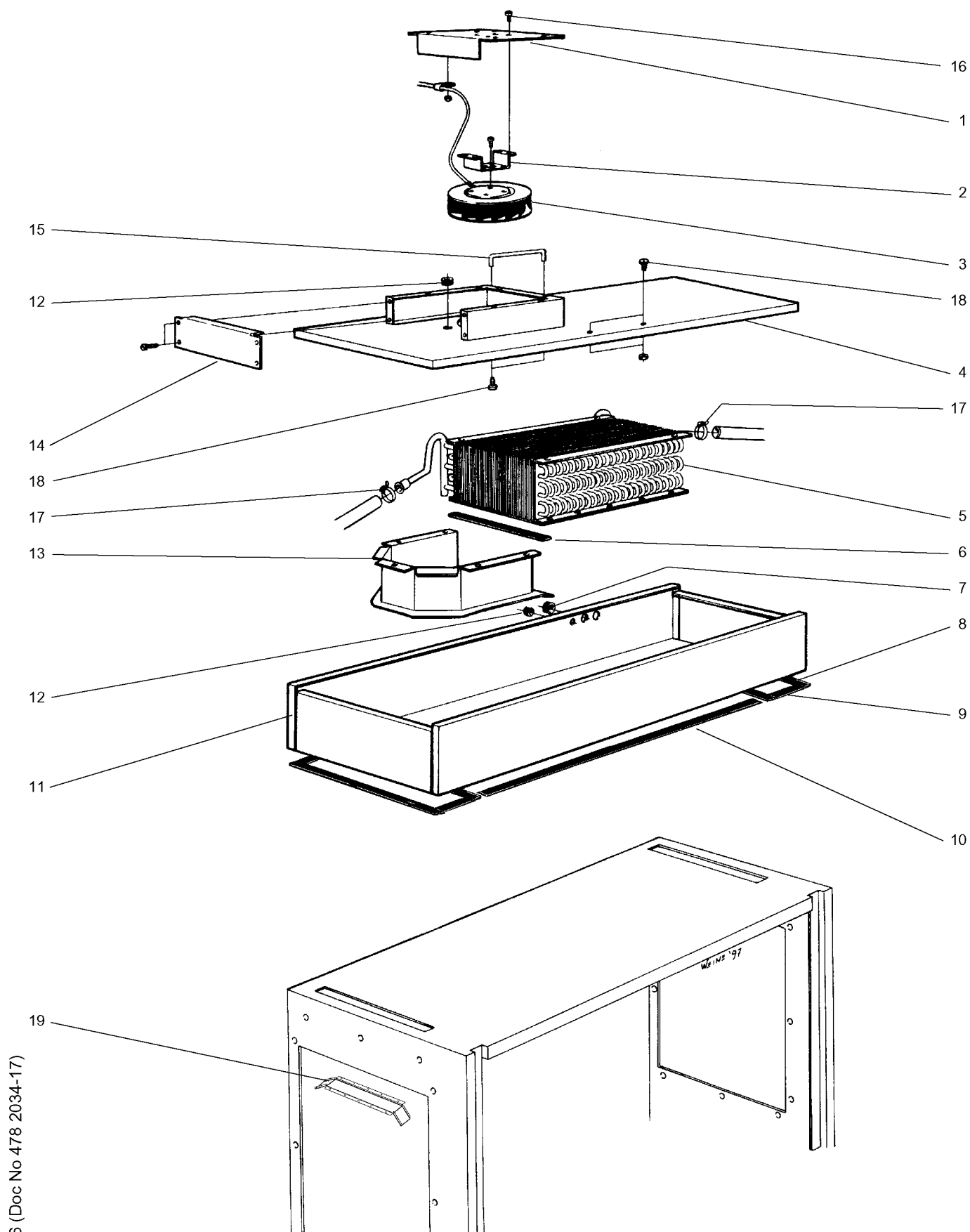
Da Ser. Nr. / From ser. nr.: 736 /

Page: 4

Ed. 0107

Doc. Nr.:

6-50 001



ill. 21318