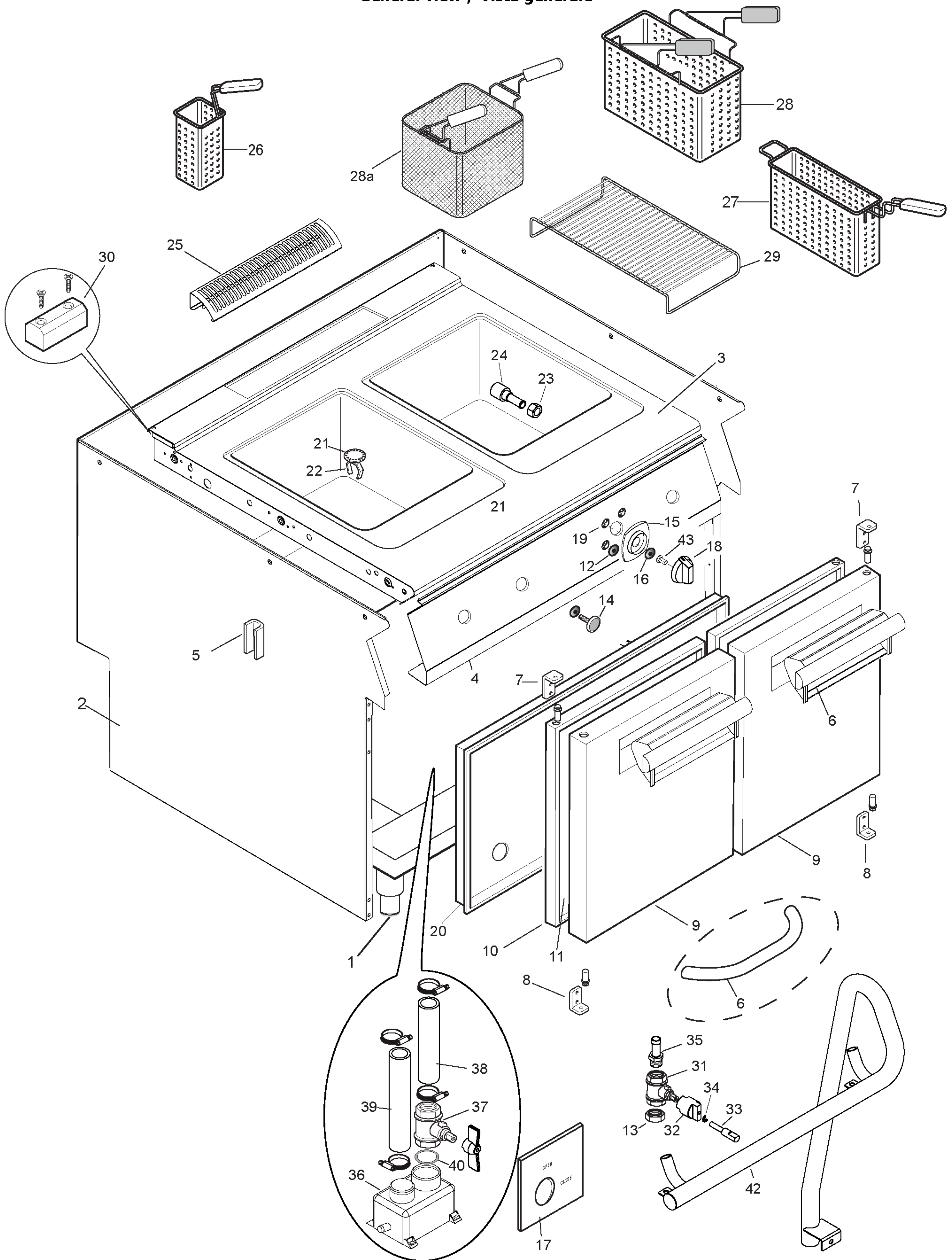


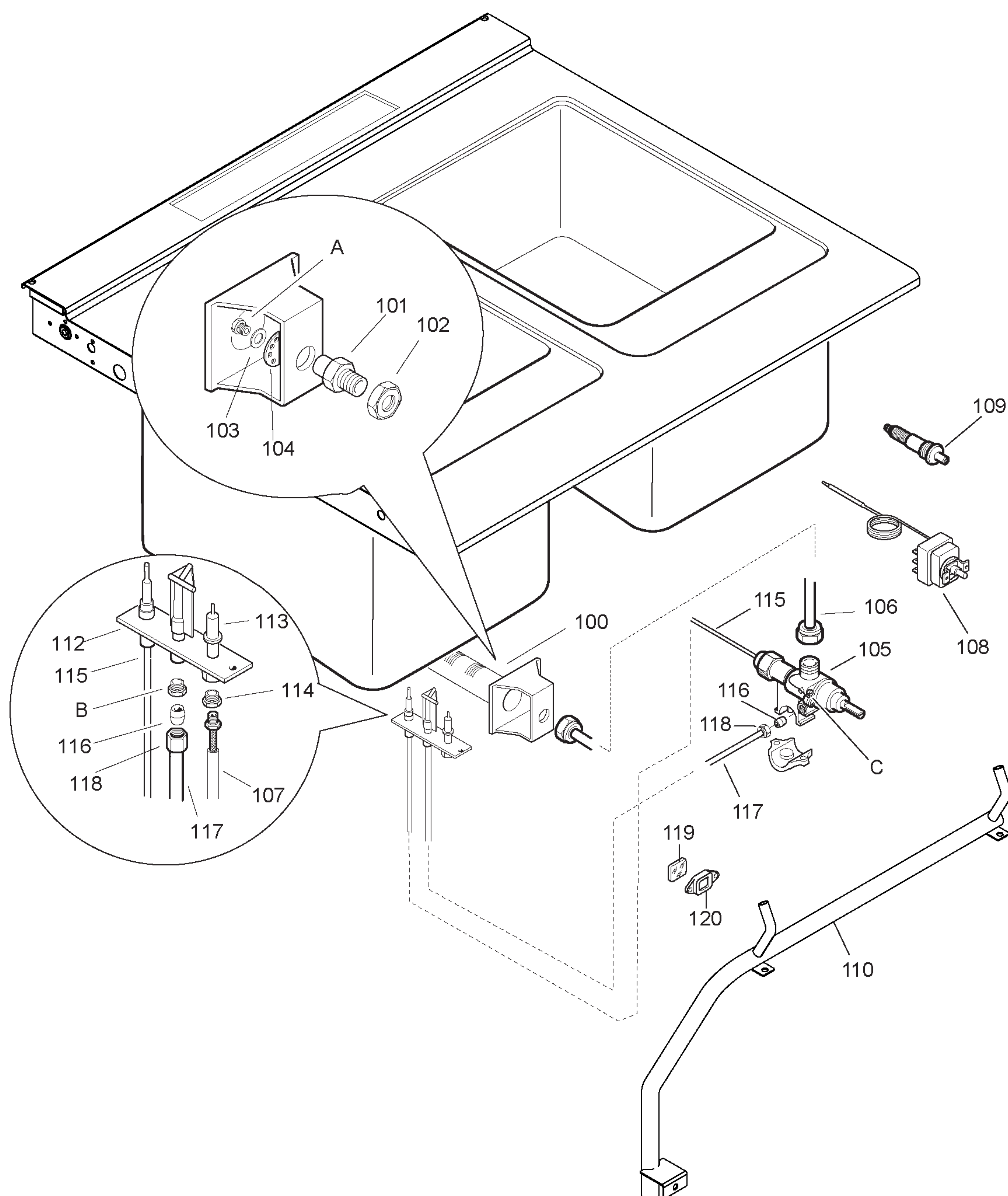
PNC	Model	Ref	Pag.	Brand	Version	Notes
371090	E7PCGD1KF0	a		ELX	GAS	1X40 LT WELL
371091	E7PCGH2KF0	b		ELX	GAS	2X40 LT WELLS
371098	E7PCED1KF0	c		ELX	EL	1X40 LT WELL
371099	E7PCEH2KF0	d		ELX	EL	2X40 LT WELLS
372090	Z7PCGD1KF0	e		ZAN	GAS	1X40 LT WELL
372091	Z7PCGH2KF0	f		ZAN	GAS	2X40 LT WELLS
372098	Z7PCED1KF0	g		ZAN	EL	1X40 LT WELL
372099	Z7PCEH2KF0	h		ZAN	EL	2X40 LT WELLS
373090	A7PCGD1KF0	i		OEM	GAS	1X40 LT WELL
373091	A7PCGH2KF0	l		OEM	GAS	2X40 LT WELLS
373098	A7PCED1KF0	m		OEM	EL	1X40 LT WELL
373099	A7PCEH2KF0	n		OEM	EL	2X40 LT WELLS

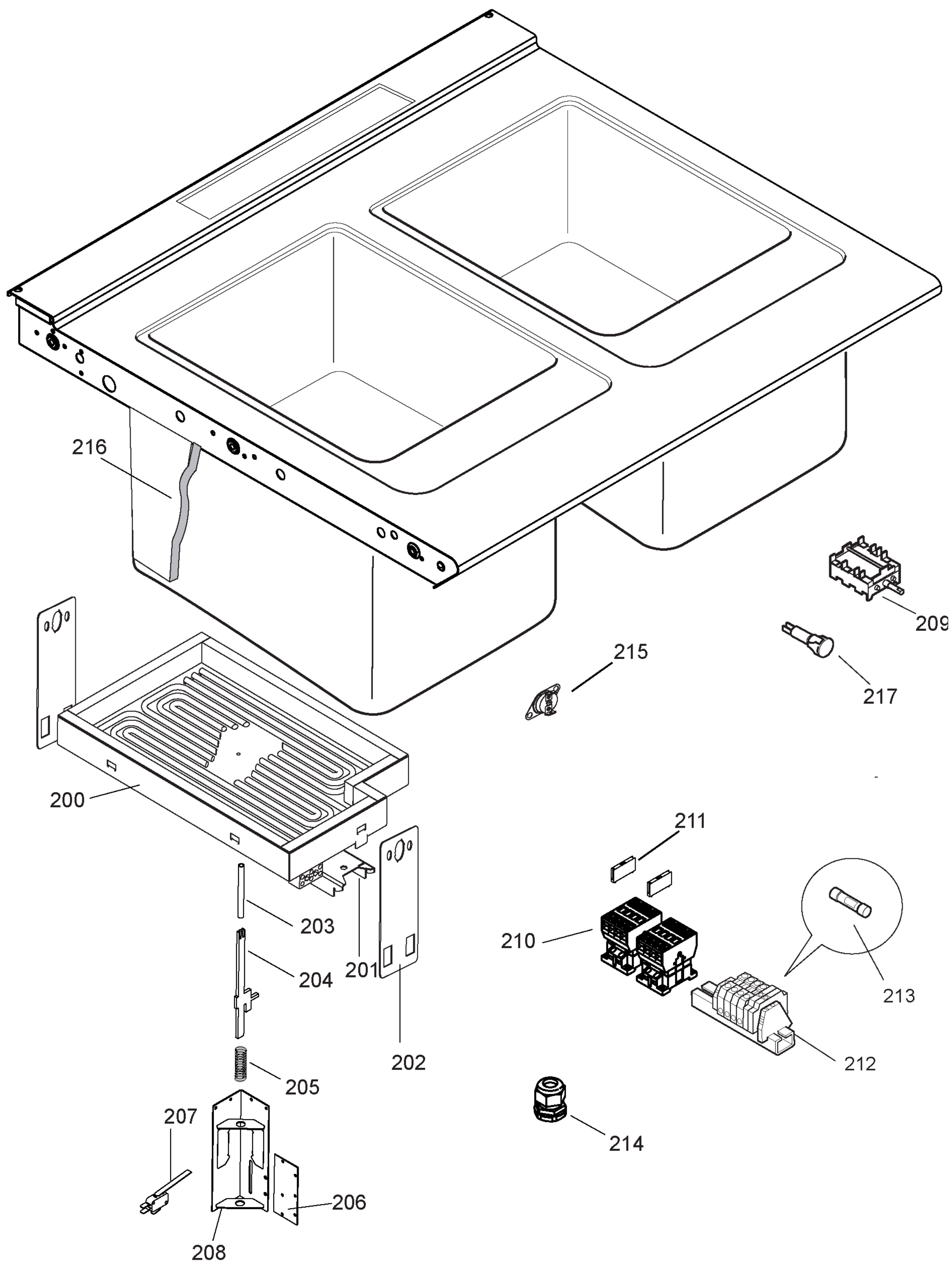
Pag	Index	Indice	Note
2	General view	Vista Generale	
3	Gas components	Componenti Gas	
4	Electric components	Componenti elettrici	
5	Ugelli	Nozzels	
6,7,8	Spare parts list	Lista ricambi	PDX2012-05

Brand/Marchio: All
Factory code: 9PDX

General view / Vista generale







A - Ugello bruciatore / Burner nozzle				
Code	Spare Code	Reference		
-	002267	ø2.45	2H/2E+	G20 20mbar
-	002865	ø2.30	2H	G20 25mbar
-	003371	ø2.75	2ELL	G25 20mbar
-	002268	ø2.60	2L	G25 25mbar
-	002268	ø2.60	2S	G25.1 25mbar
-	002905	ø1.60	3+3B/P	G30 30mbar
-	003722	ø1.55	3B/P	G30 36mbar
-	004488	ø1.40	3B/P	G30 50mbar
-	0C0551	ø2.85	No CE	G20 10mbar
	0C3079	Ø6.25	No CE	G110 8mbar

B - Ugello Pilota / Burner nozzle				
Code	Spare Code	Reference		
-	054037	n°25	2H/2E+	G20 20mbar
-	054037	n°25	2H	G20 25mbar
-	054037	n°25	2ELL	G25 20mbar
-	054037	n°25	2L	G25 25mbar
-	054037	n°25	2S	G25.1 25mbar
-	054286	n°24	3+3B/P	G30 30mbar
-	054286	n°24	3B/P	G30 36mbar
-	054286	n°24	3B/P	G30 50mbar
-	054037	n°25	No CE	G20 10mbar
	054038		No CE	G110 8mbar

C – Vite Minimo / Min Screw				
Code	Spare Code	Reference		
-	003182	140	2H/2E+	G20 20mbar
-	003182	140	2H	G20 25mbar
-	003182	140	2ELL	G25 20mbar
-	003182	140	2L	G25 25mbar
-	003182	140	2S	G25.1 25mbar
-	002770	85	3+3B/P	G30 30mbar
-	002770	85	3B/P	G30 36mbar
-	002769	75	3B/P	G30 50mbar
-	003182	140	No CE	G20 10mbar