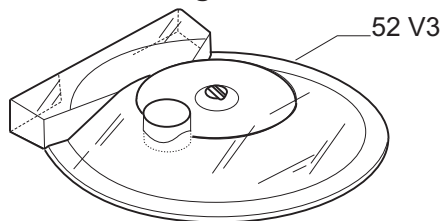
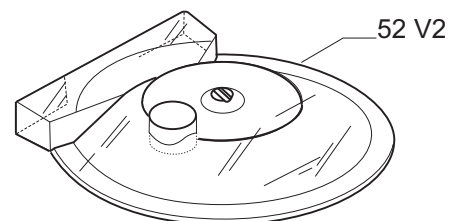


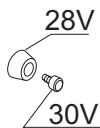
Fino al 08/2003 no guarnizione
Until 08/2003 no gasket



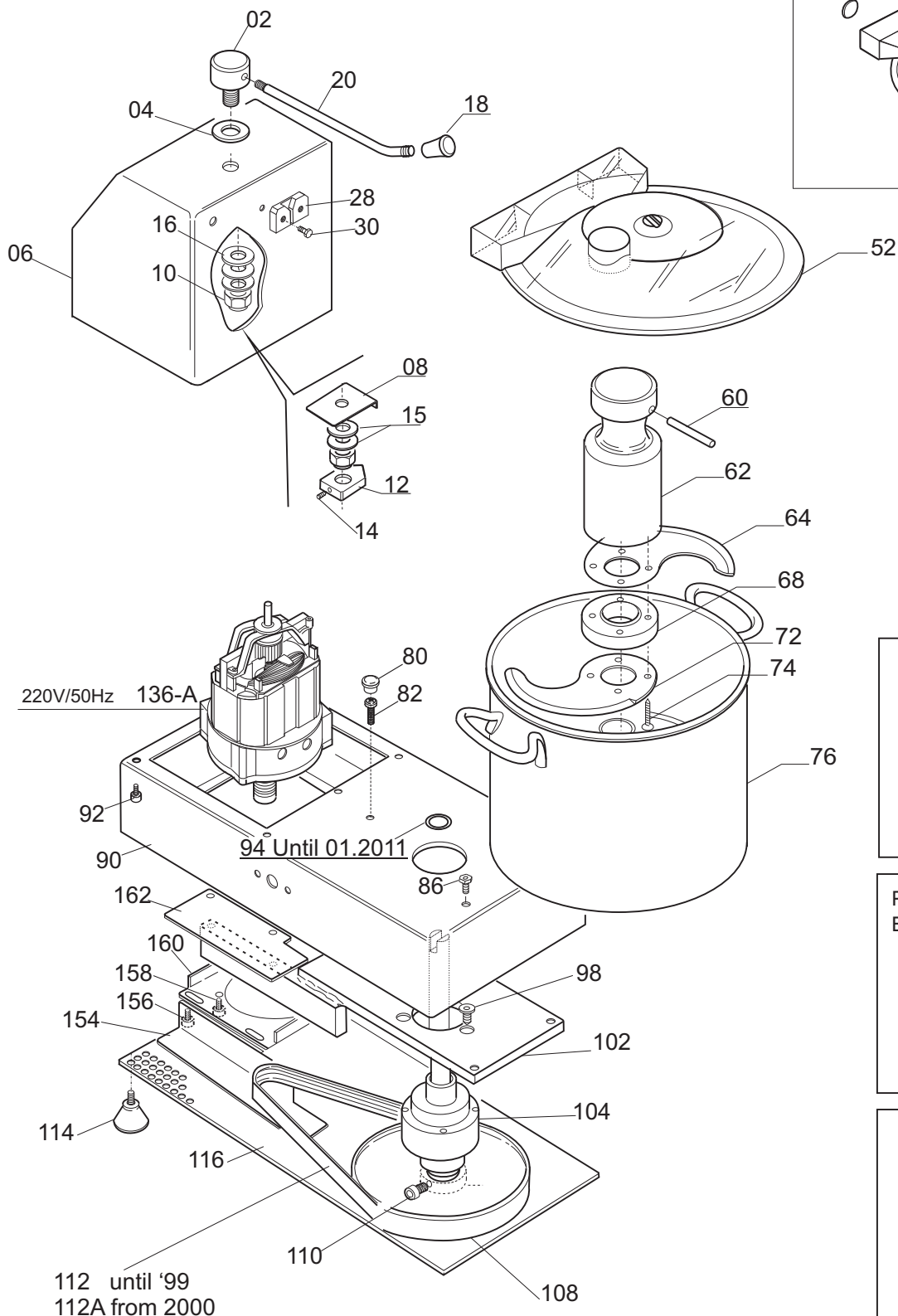
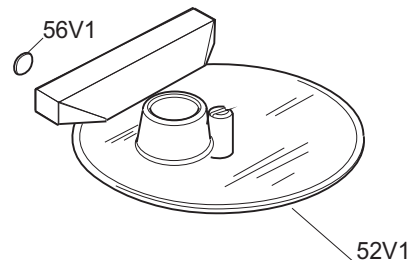
Fino al 1999 con Magnete
Until 1999 with Magnet



UNTIL '97

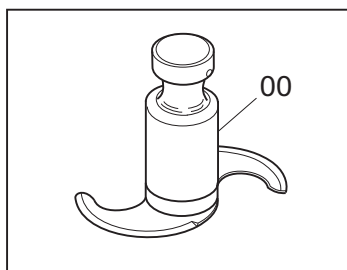


Fino al 1992
Until 1992



220V/50Hz 136-A

94 Until 01.2011



PROTEZIONE LAMA
BLADE GUARD

173 / 175

