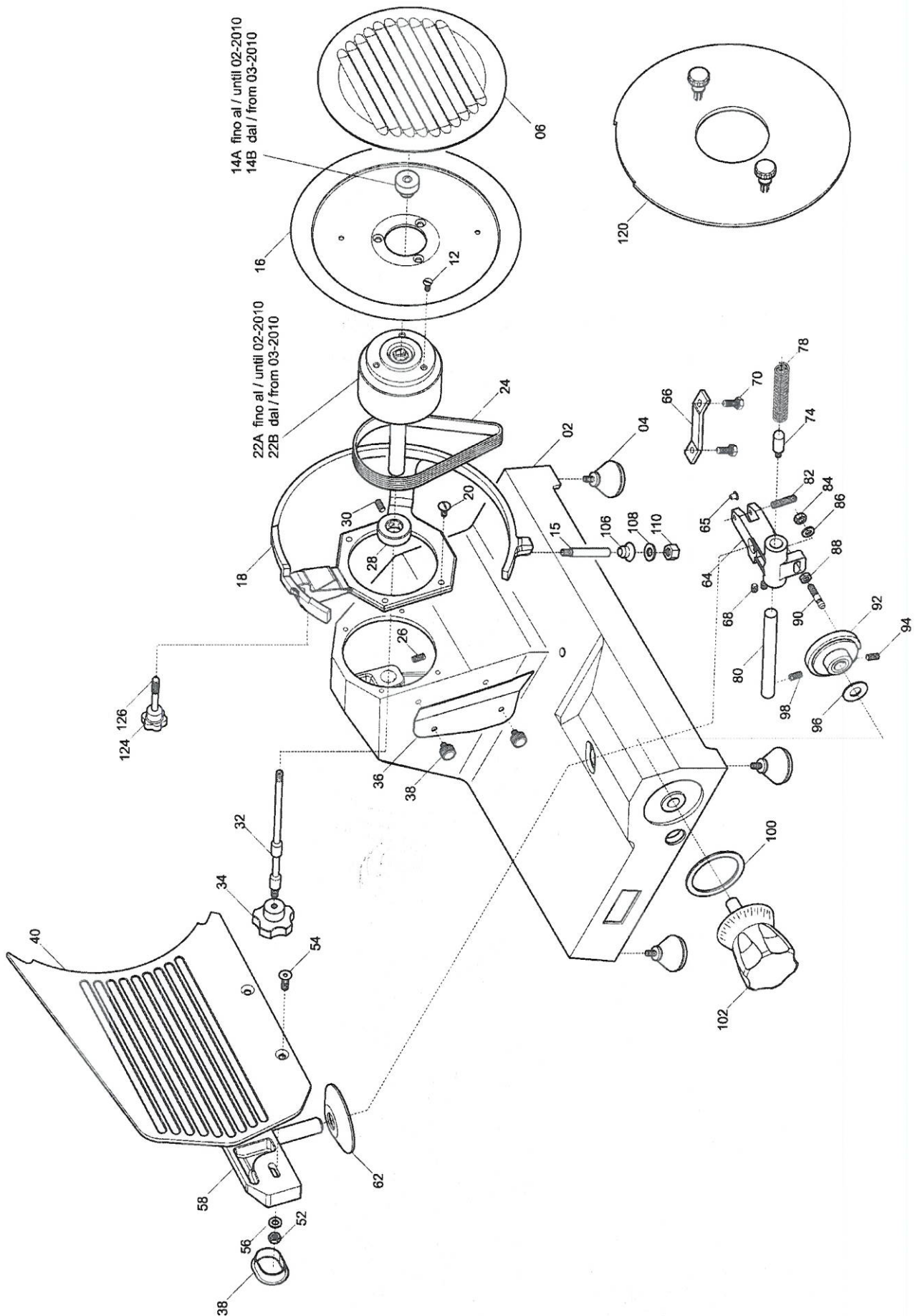
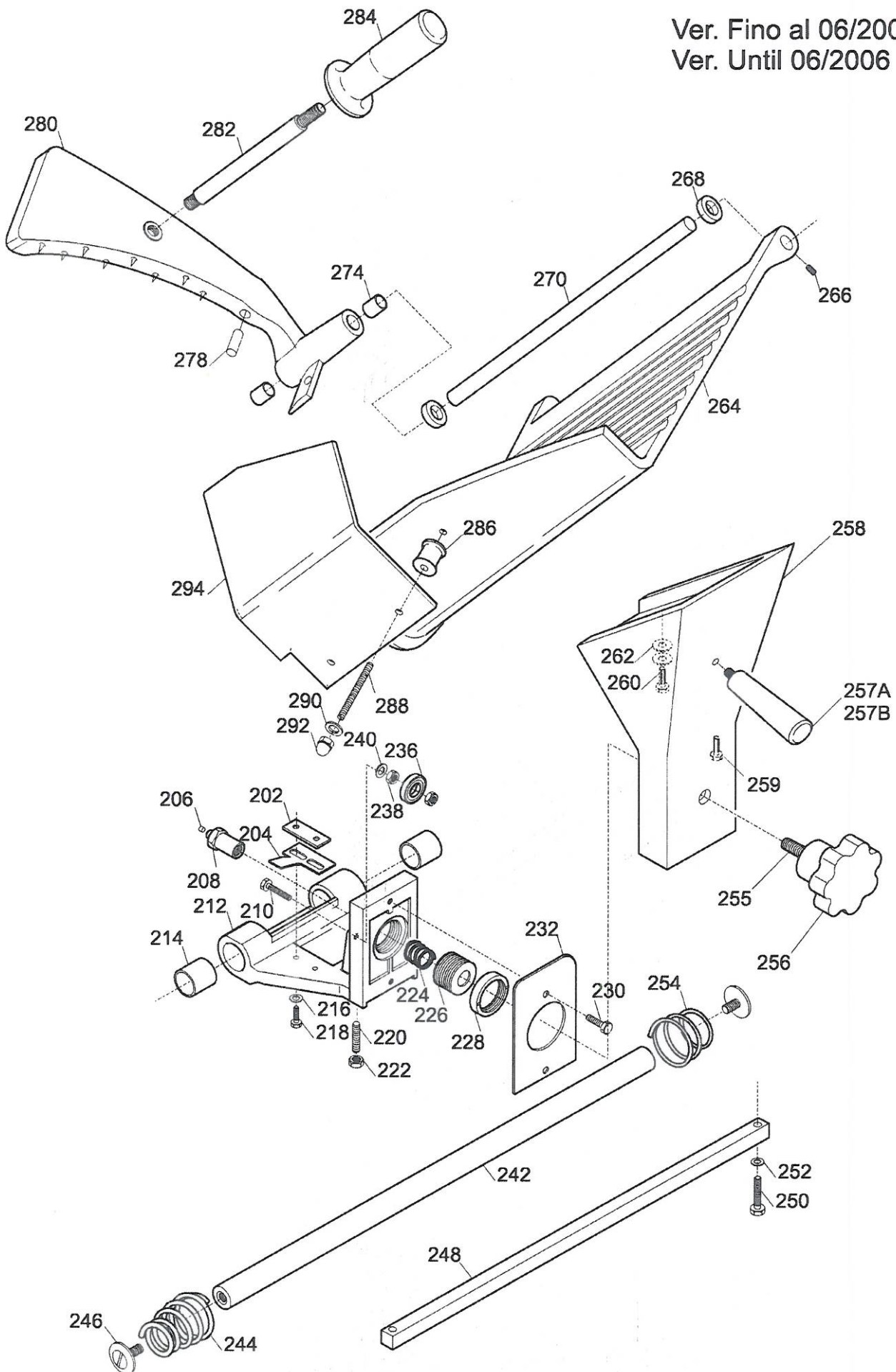


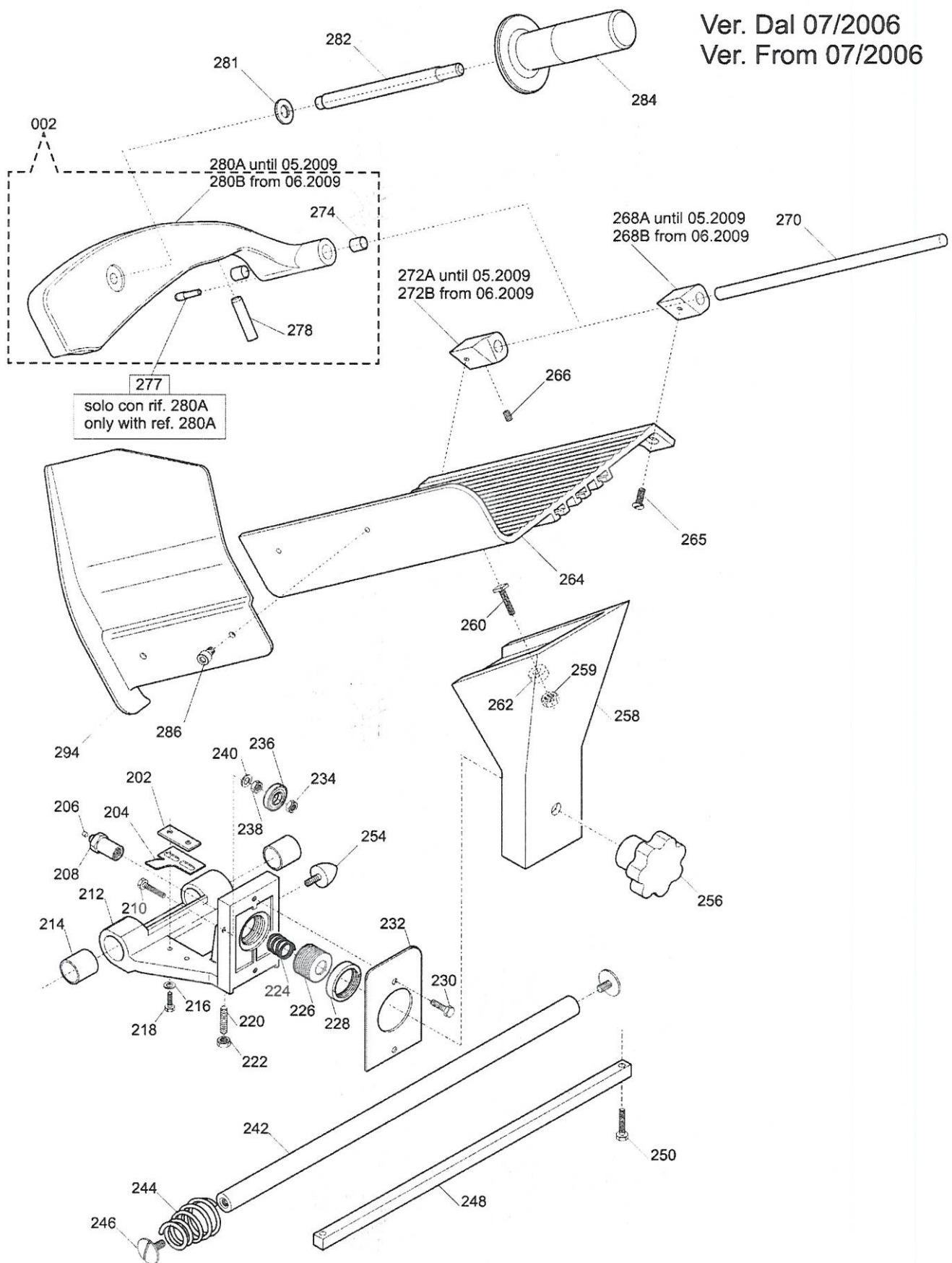
SIRMAN SLICER MODEL. MIRRA 275C-CE

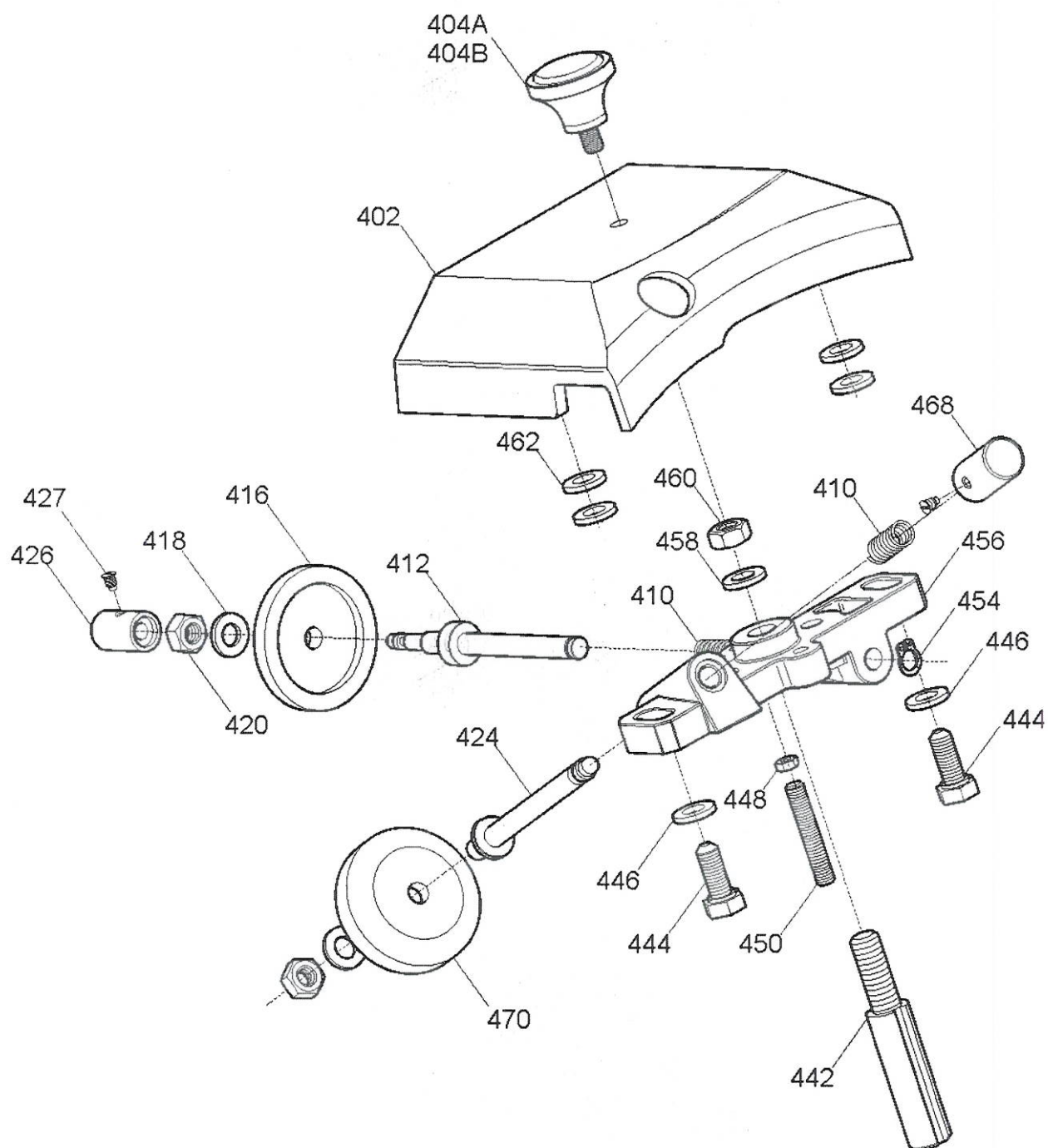


Ver. Fino al 06/2006  
Ver. Until 06/2006

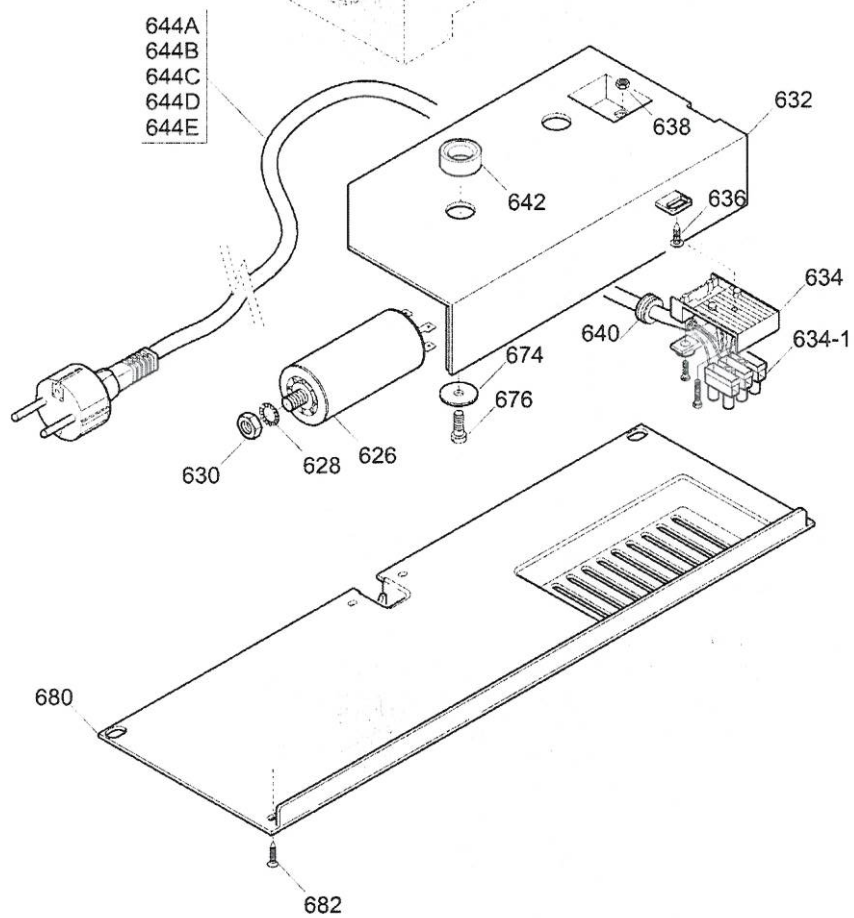
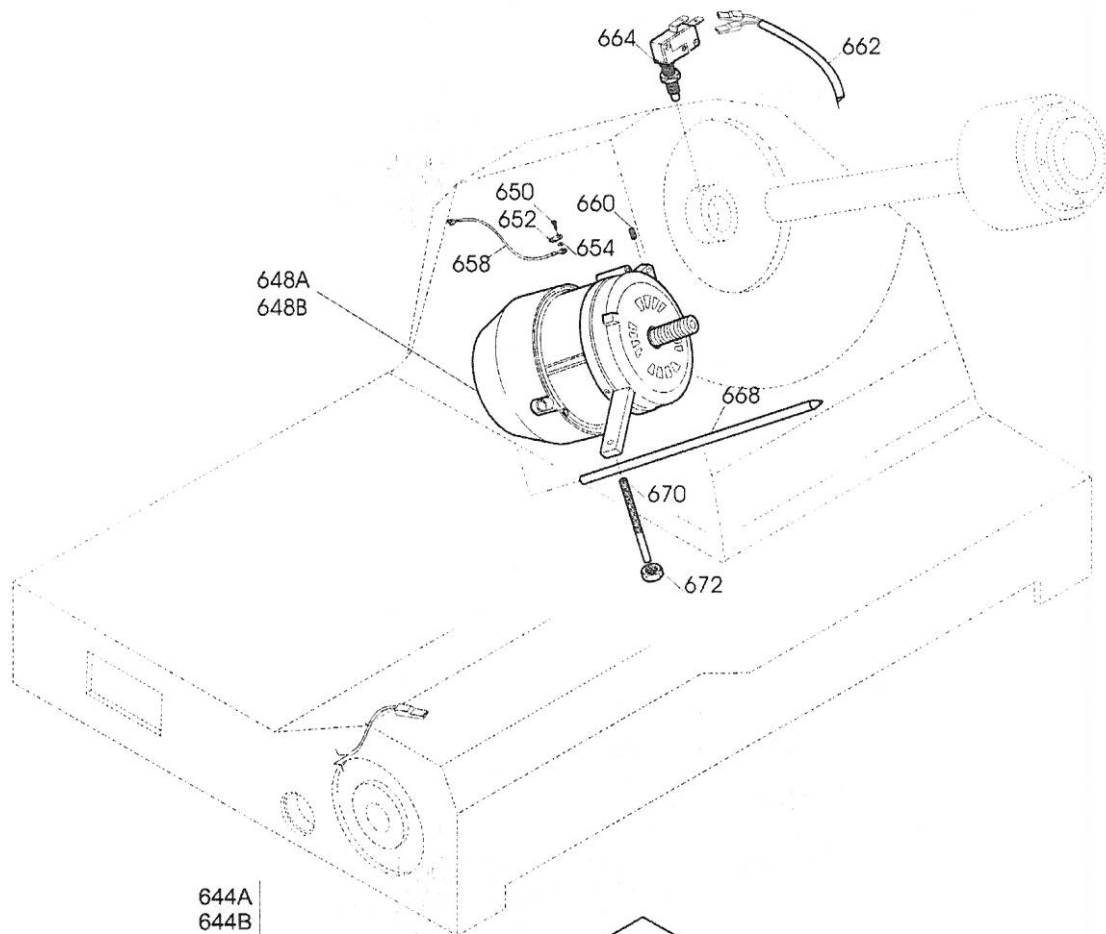


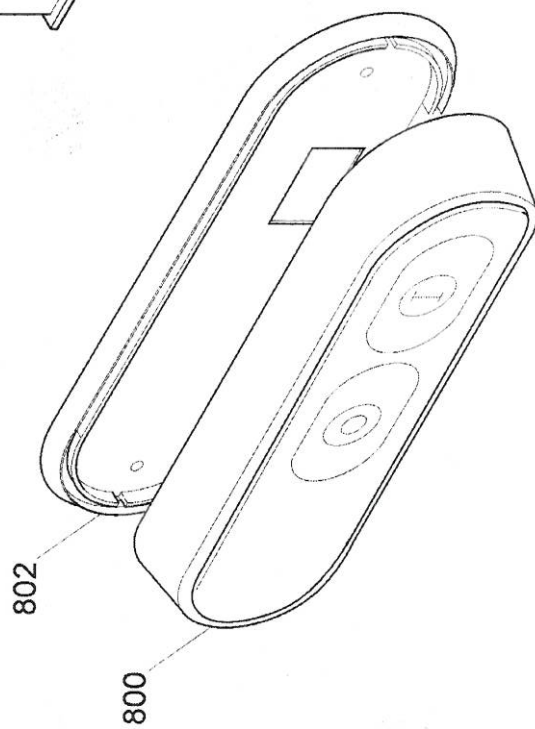
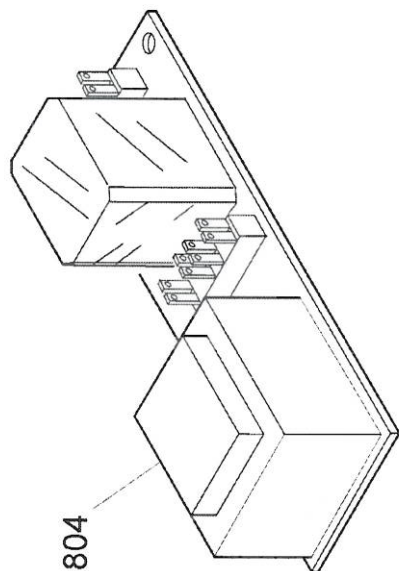
Ver. Dal 07/2006  
Ver. From 07/2006

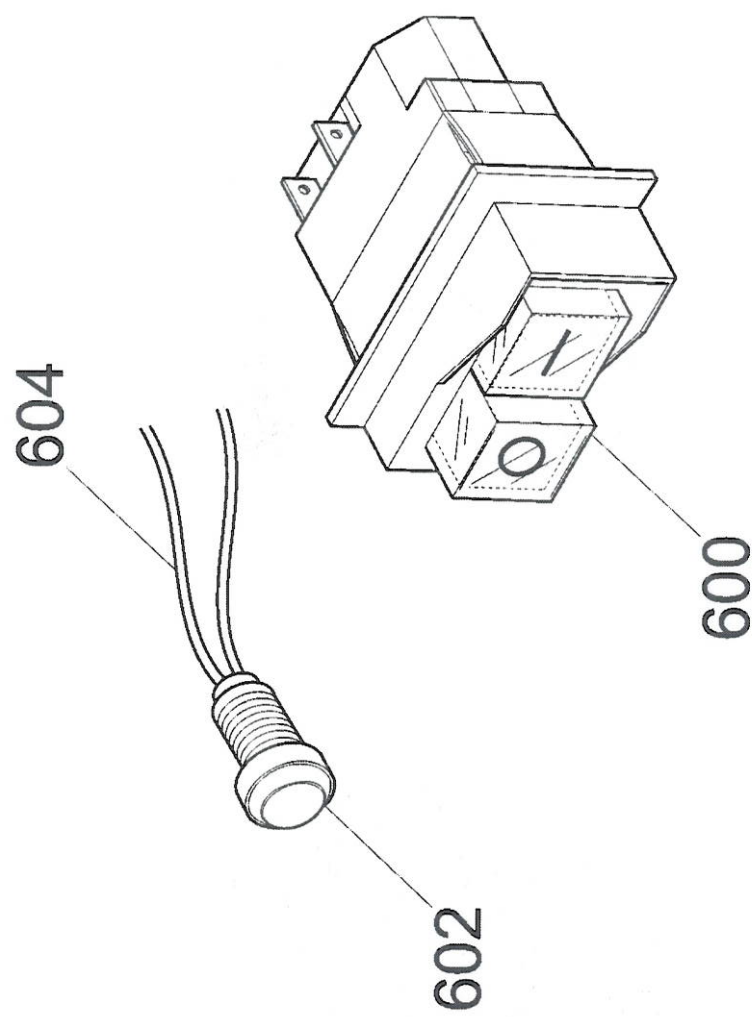












For save the list click save

Save

Then open the file with excel, if you use open office in the window "Text Import" choose in the separate option the checkbox semicolon and then press ok

Number Electronic switch : *Electronic switch 1/1*Name Electronic switch : *Electronic switch MIRRA 275C CE TAV. UNICA*

Ref.	Product name	Code
800A	PUSH BUTTON PANEL_ROUND	19702004
800B	PUSH-BUTTON PANEL BLUE	19702021
800C	SWITCH COVER WHITE	19702022
802	GASKET FOR ROUND CONTROL PANEL	19563034
804A	POWER CIRCUIT BOARD 230 V	19411007
804B	CIRCUIT BOARD 220-380 3-PHASE	19411008

Number Switch : *Switch 6/1*Name Switch : *MIRRA 275C CE*

Ref.	Product name	Code
600	ON/OFF SWITCH 230 V	19410152
602	380/220V PILOT LAMP	19410406
604	WIRING - PILOT LAMP	19410750

Number Table : *Table 1/5*Name Table : *MIRRA 275C CE TAV.1/4*

Ref.	Product name	Code
02	BASE/FRAME FOR SLICER MIRRA220-250	19510101/01
04	FOOT M5 FOR SLICER/CUTTER	19560201
06	INT.LAMA 275 VERT+GRAV. OSSIDATO	19510230
100	KNOB WASHER FOR MIRRA	19562145
102A	THICKNESS CONTROL KNOB FOR MIRRA	19562402
102B	THICKNESS CONTROL KNOB (BLUE)	19564020
106	RING FOR SLICER	19534062
120	DISCO ESTRATTORE LAMA PER 275	19702506
124A	SHARPENER LOCKING KNOB FOR SLICER	19562602
124B	BLU KNOB M8 6 LOB	19564015
126	SHARPENER SUPPORT STUD BOLT	19336010
14A	BLADE GUARD LOCK RING FOR SLICER	19530901
14B	LOCK NUT MIRRA 300 Y09	19530930.10
15	PERNO XANELLO MRR 275 C SG	19534083
16	BLADE 275 - 40/3/218 CE	18275403218F
16T	BLADE 275 40/3/218 TEFLON CE	18275403218TF
18	AN.PR.LAMA 275 SG MRR CORT	19513005
22A	PULEG. MONT.MRR. 220-300	19700332
22B	PULLEY - MRR 220-300 Y10	19700340.10
24	BELT TB2 345X8 FOR MIRRA	19310201
28	MICROSWITCH RING FOR SLICER MIRRA	19540901
32	BLADE GUARD TIE ROD MIRRA 220-250	19530532
34A	TIE ROD KNOB M6X5 FOR MIRRA	19562502
34B	BLADE GUARD TIE ROD KNOB MIRRA_BLUE	19564016
36	PARAFETTA MRR CORT 275 SG SV	19531021
38	SCREW M5 FOR SLICER	19335014
40	VELA SG 275 ESTR.MRR.NEW CE OSSIDAT	195103E06C
48	SUPPORT CAP_MIRRA V220-300	19560132
54	SCREW FOR TABLE_MIRRA 220-250	19335060
58	TABLE SUPPORT_SLICER MIRRA 220-250	19510701/01
62	LARGE WASHER	19563002
64	THICKNESS PLATE SLIDE FOR MIRRA	19500101/01
65	MOVEMENT HEAD D8,5XHT2 FOR SLICER	19563201
66	SLIDE GUIDE FOR SLICER MIRRA	19540601
74	SPRING PIN FOR SLICER MIRRA 220-250	19531360
78	SPRING FOR MIRRA 220-250	19390201/02
80	TABLE SLIDE PIN_SLICER MIRRA D.12MM	19530701
82	STUD BOLT 6X25 FOR SLICER	19337002
90	CAM PIN FOR MIRRA	19336062/01
92	CAM FOR MIRRA 220/275-300VERT	19563505LG
96	WASHER 12	19342005



Number Table : Table 2/5

Name Table : MIRRA 275C CE Tav.2/4

Ref.	Product name	Code
202	PLATE FOR SLICER	19533200
204	PIAST. SGANCIO CARR. MRR CE	19533210
206	PUSH ROD _ SLICER 300-385 CE	19565001
208	PIN _ SLICER 220-250 CE	19534034
212	CARRIAGE FOR SLICER	19500516
214	BUSHING 18.20.20	19324108
224	RELEASE SPRING 220-250 CE	19390600
226	THREADED BUSH _ SLICER 220-250 CE	19534024
228	LOCKRING EXT _ SLICER 220-250 CE	19534029
232	PIASTRINA CARRELLO 220-250-300V CE	19533001
236	CARRIAGE BEARING 626 2RS R50_MIRRA	19320103
242	ROUND RAIL FOR CARRIAGE_SLICER	19530601
244	ROUND SLIDE BAR SPRING MIRRA220-250	19390111
246	SCREW T.20 FOR SLICER MIRRA	19335001
248	SQUARE RAIL MIRRA	19540101
254	ROUND SLIDE BAR SPRING MIRRA220-250	19390101
255	STUD BOLT M8X30 FOR MIRRA CE	19336039
256A	TIE ROD KNOB M8X5_SLICER 300-370	19562504
256B	BLADE GUARD TIE ROD KNOB M8 _ BLUE	19564013
257A	KNOB FOR MEAT PRESS/CARRIAGE	19562901
257B	BLU KNOB M8 6 LOB	19564015
258	GAMBO MRR CE OSSIDATO	19510616
264	HOPPER MIRRA250	195104011
268	DISTANZ.PARACOLPO MRR.D21X12MM	19561520
270	SHAFT FOR SLICER PUSHER MRR250	19530402
274	BUSHING 10.12.10	19324101
278	BUFFER D6,5X30 FOR MIRRA	19563208
280	MEAT PRESS FOR SLICER	19510902C
282	SPACER D12X150 FOR MIRRA CE	19541508
284A	MEAT PRESS KNOB FOR SLICER CE	19562904
284B	MEAT PRESS KNOB - BLUE	19564012
286	SPACER D.20X15MM	19521601
288	STUD BOLT M5 X 30	19336003
290	WASHER 5 X 20	AVA290
292	BLIND NUT M5	AVA292
294	HAND GUARD_MIRRA/PERLA/TOPAZ220-250	19562322

Number Table : Table 3/5

Name Table : MIRRA 275C CE Tav. 2a

Ref.	Product name	Code
-	PIATTO MRR 250 Y06 COMP.CE.PR EST	198010E01
002	ASSIEME PRESSAMERCE MRR-CNV CE	19801233
202	PLATE FOR SLICER	19533200
204	PIAST. SGANCIO CARR. MRR CE	19533210
206	PUSH ROD _ SLICER 300-385 CE	19565001
208	PIN _ SLICER 220-250 CE	19534034
212	CARRIAGE FOR SLICER	19500516
214	BUSHING 18.20.20	19324108
224	RELEASE SPRING 220-250 CE	19390600
226	THREADED BUSH _ SLICER 220-250 CE	19534024
228	LOCKRING EXT _ SLICER 220-250 CE	19534029
232	PIASTRINA CARRELLO 220-250-300V CE	19533001
236	CARRIAGE BEARING 626 2RS R50_MIRRA	19320103
242	ROUND RAIL FOR CARRIAGE_SLICER	19530601
244	ROUND SLIDE BAR SPRING MIRRA220-250	19390111
246	SCREW T.20 FOR SLICER MIRRA	19335001
248	SQUARE RAIL MIRRA	19540101
254	CARRIAGE BUFFER M5X12 MIRRA 220-300	19560170
255	STUD BOLT M8X30 FOR MIRRA CE	19336039
256A	TIE ROD KNOB M8X5_SLICER 300-370	19562504
256B	BLADE GUARD TIE ROD KNOB M8 _ BLUE	19564013
258	GAMBO MRR CE OSSIDATO	19510616

260	SCREW, MEAT BED MIRRA 220-250	19335042
264	CARRIAGE FOR SLICER MIRRA 250	195104E011
268A	END WEIGHT ROD SUPPORT_MIRRA Y06	19525062
268B	BLOCK, CARRIAGE MRR 250	19566062
270	END WEIGHT ROD_SLICER MIRRA 250 Y06	19530402.06
272A	END WEIGHT ROD SUPPORT_MIRRA Y06	19525060
272B	BLOCK W/PLASTIC BUSH, MRR 250	19566060
274	BUSHING 10.12.10	19324101
277	MEAT PRESS PIN FOR SLICER 250	19563213
278	PUSHER BUFFER D8,5XH36	19563206
280A	MEAT PRESS FOR SLICER	19510902C.06
280B	MEAT PRESS MRR 250 CE Y08	19510902C.08
282	SPACER D12X150 FOR MIRRA CE	19541508
284A	MEAT PRESS KNOB FOR SLICER CE	19562904
284B	MEAT PRESS KNOB - BLUE	19564012
294	POLYC.HAND GUARD MRR 220-250_NEW	19562322.06

Number Table : Table 4/5

Name Table : MIRRA 275C CE TAV.3/4

Ref.	Product name	Code
-	AFFILAT.INC.CE MRR C 250G-300 VERT	19800032
402	CAPP.MRR 220-250G 300SV CE OSSIDATA	19511202C
404A	SHARPENER KNOB M5	19562700
404B	KNOB FOR SLICER BLU	19564018
410	SHARPENER SPRING _ SLICER 250-300	19390303
412	DEBURRING ROD _ SLICER 250-300	19540703
416	DEBURRING STONE D.40 H8 F6	19300201
424	SHARPENING ROD _ SLICER 250-300	19540704
426	DEBURRING BUTTON _ SLICER 250-300	19550203
427	BUTTON SCREW _ SLICER 250-370	19335025
442	PERNO COL.FR.MRR.250G/300V L=62,5	19540432
450	SHARPENER SUPPORT STUD BOLT	19336010
456	SHARPENING MOUNT_MIRRA VERT.220-300	19021332
468	SHARPENING BUTTON _ SLICER 250-300	19550202
470	SHARPENING STONE D40 H11 F6	19300101

Number Table : Table 5/5

Name Table : MIRRA 275C CE TAV.4/4

Ref.	Product name	Code
626	CAPACITOR 8UF FOR MIRRA	19410301
632	ELECTRICAL HOUSING FOR SLICER	19563125
634	TERMINAL BOARD FOR SLICER	19410822
634-1	SUB-TERMINAL BLOCK	19410820
642	WIRE HOUSING SPACER RING	19561500
644A	SUPPLY CORD SINGLE-PHASE "SHUKO"	19410502
644B	US POWER CORD 1PH FOR SLICER	19410503
644C	UK POWER CORD SINGLE PHASE	19410504
644D	AUSTRALIAN POWER CORD, 1PH	19410508
644E	JAPANESE POWER CORD 1PH	19410511
648A	MOTOR 230V 50HZ FOR MIRRA 220-250	19400101
648B	MOTOR FOR SLICER MIRRA 220/60/1	194001016
658	GROUND WIRE_SLICER 220-250 UL APPR.	19410738
662	CAVO MICRO X 250 TUV	19410704
664	MICROSWITCH SINGLE-PHASE	19410201
668	S/S MOTOR ROD FOR SLICER MIRRA	19540501
670	MOTOR TIE ROD, SLICER 250	19336015
680	BOTTOM COVER SLICER MRR 220-250	19563151