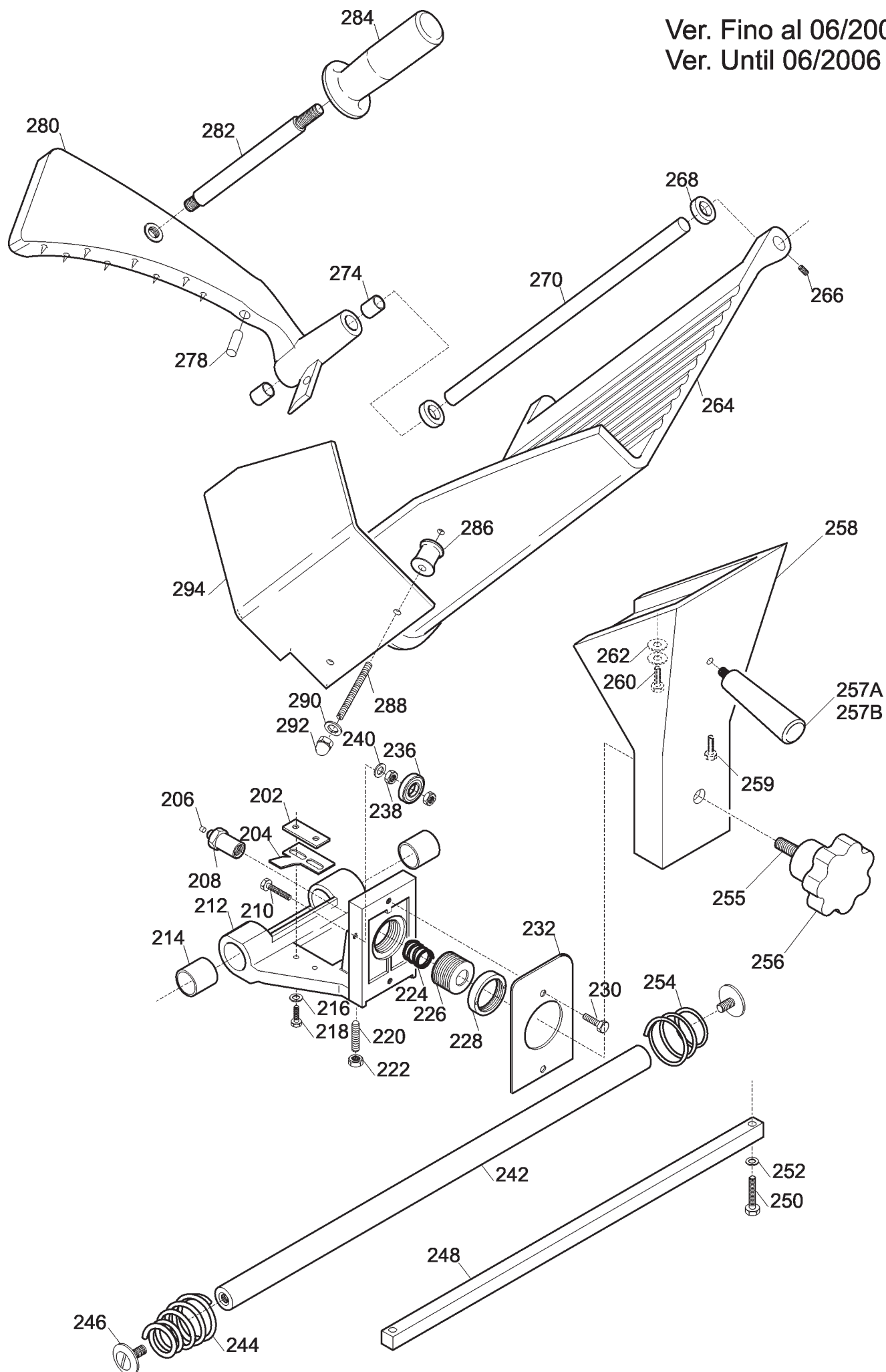
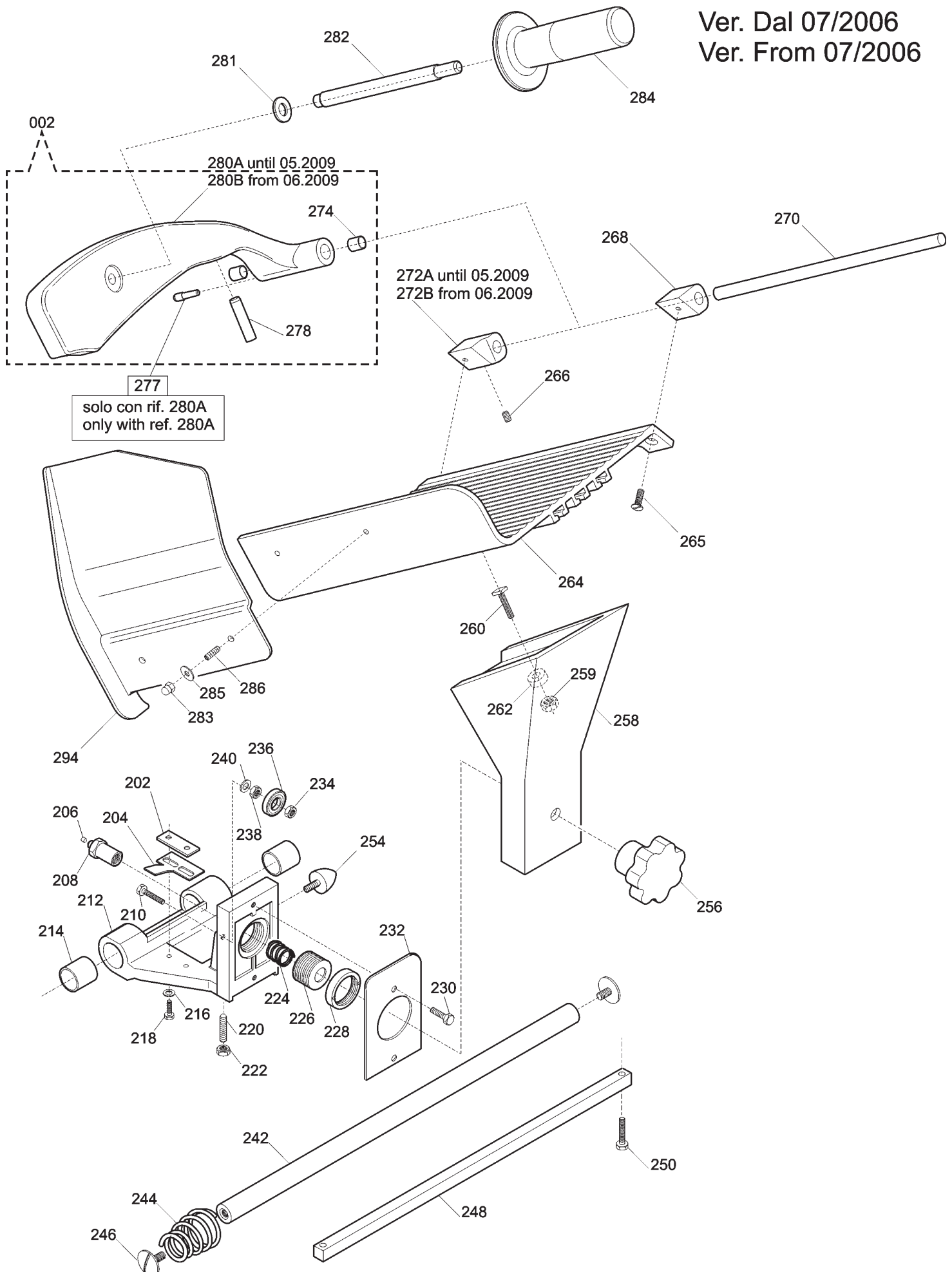
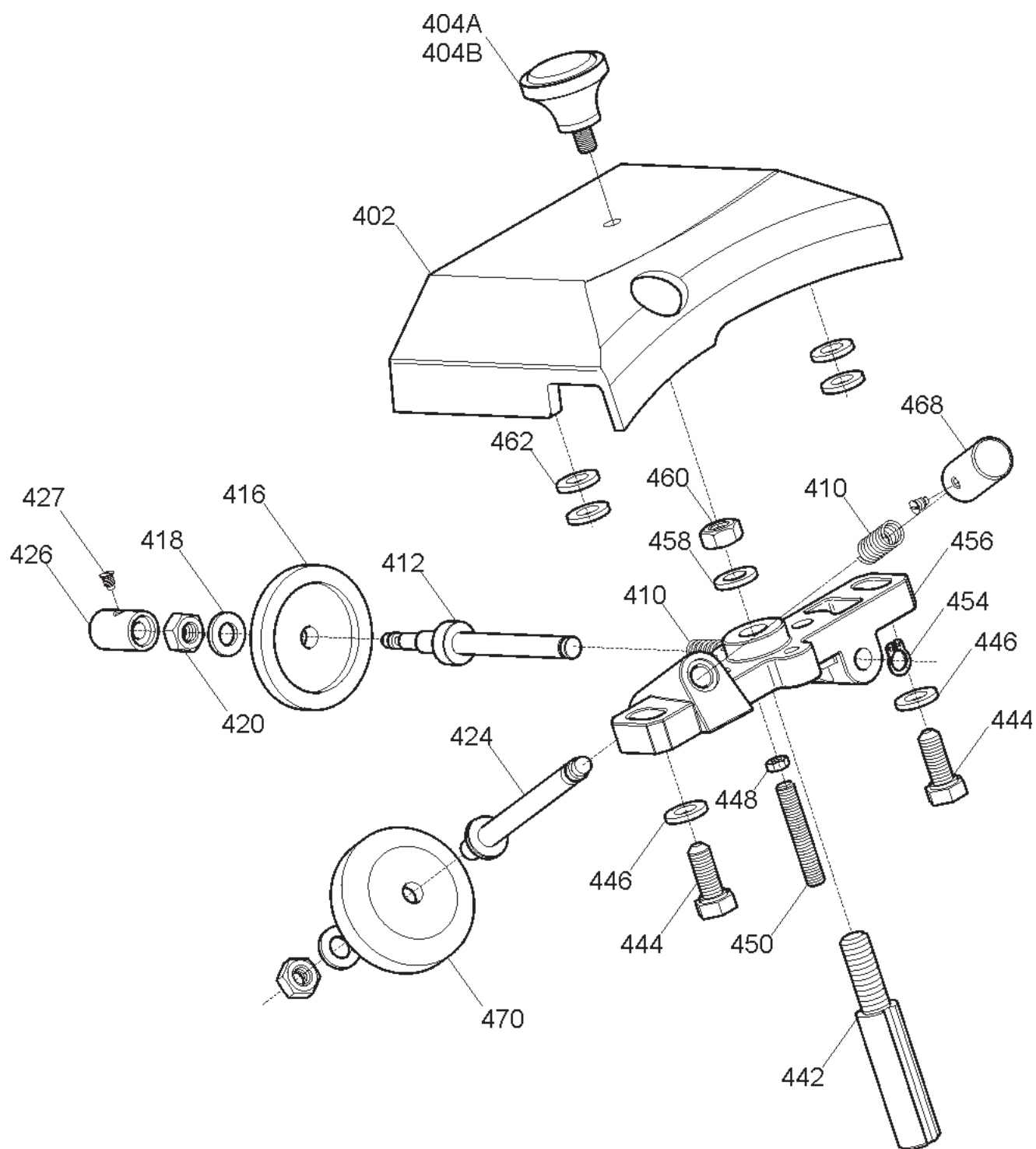


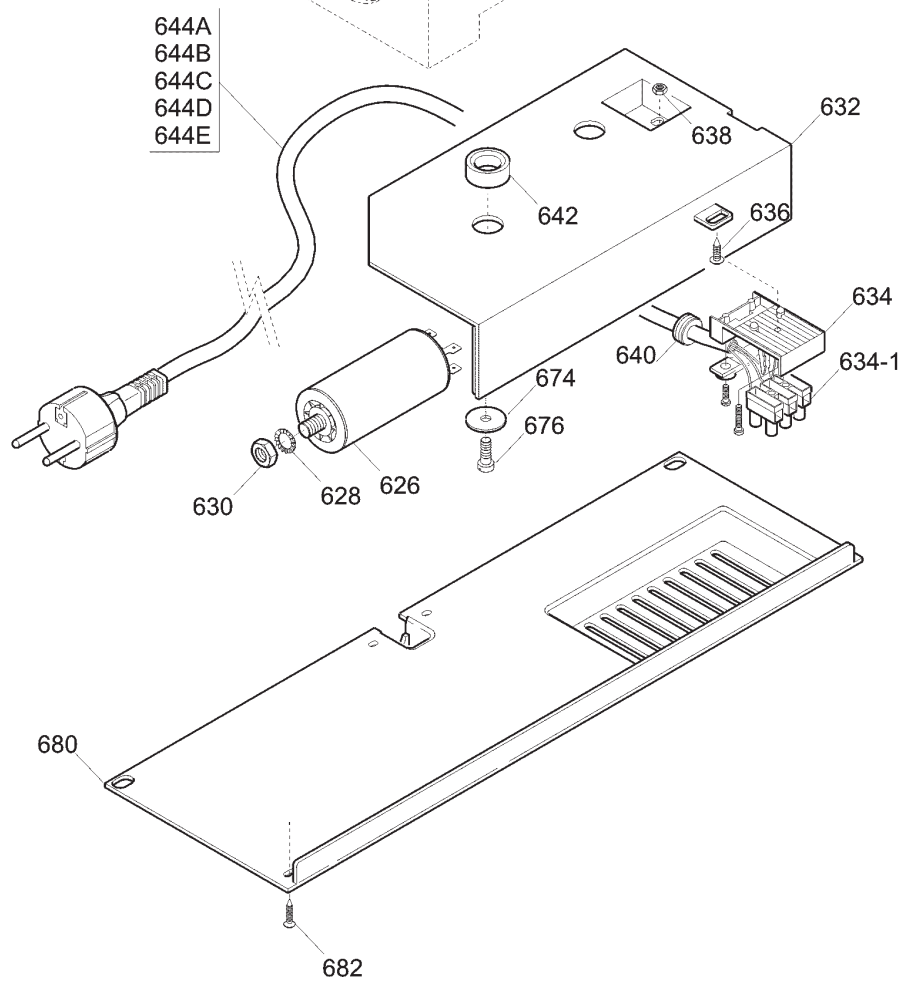
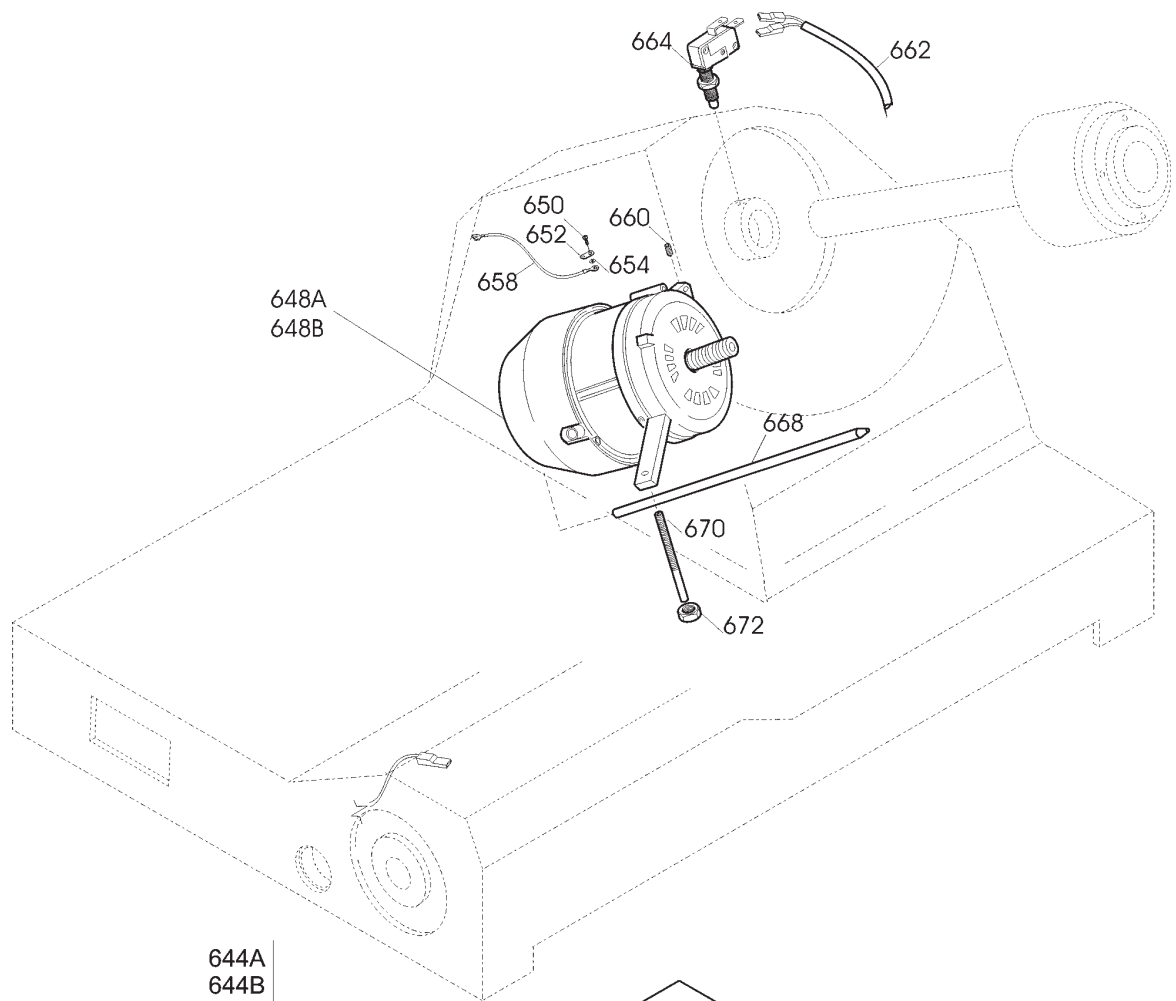
Ver. Fino al 06/2006  
Ver. Until 06/2006

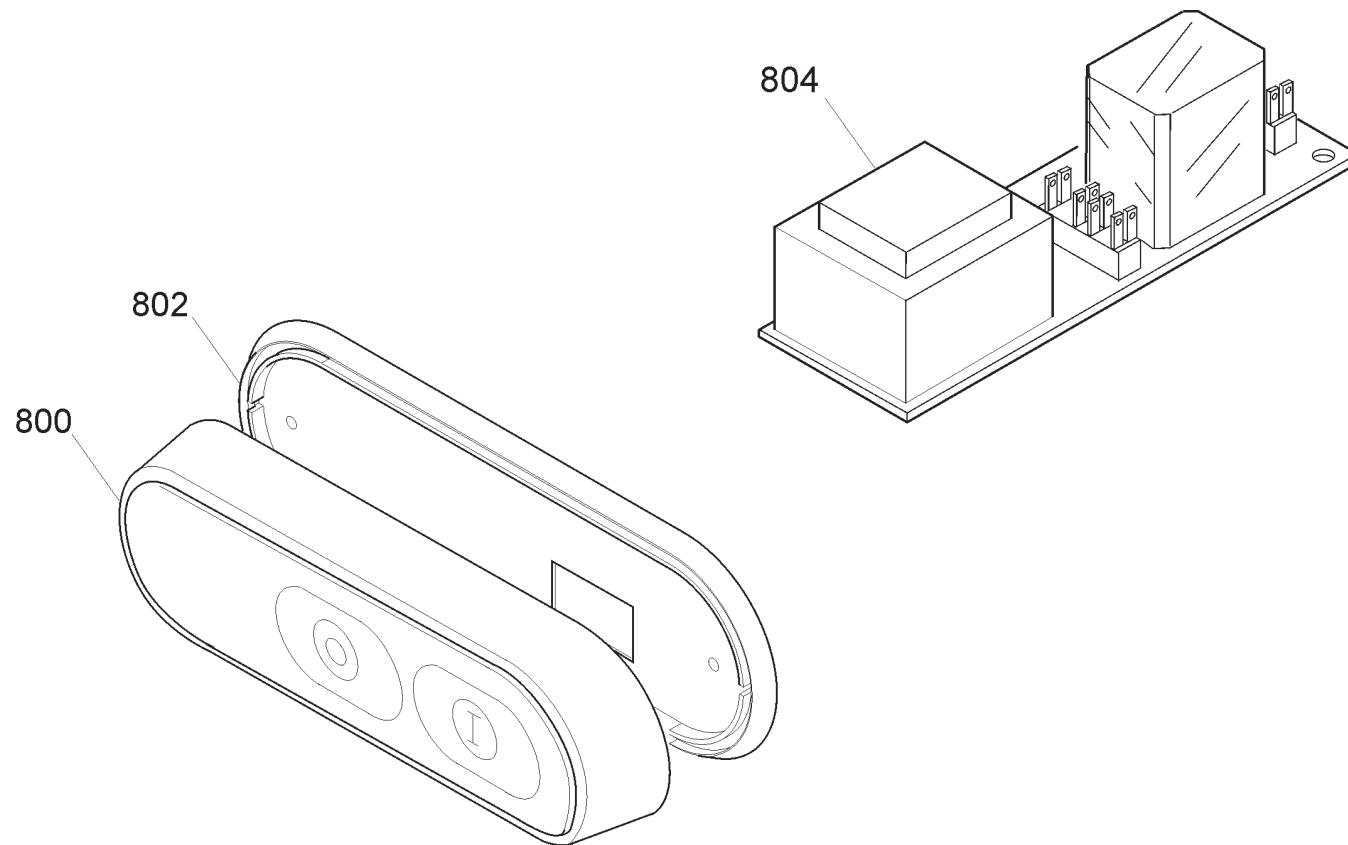


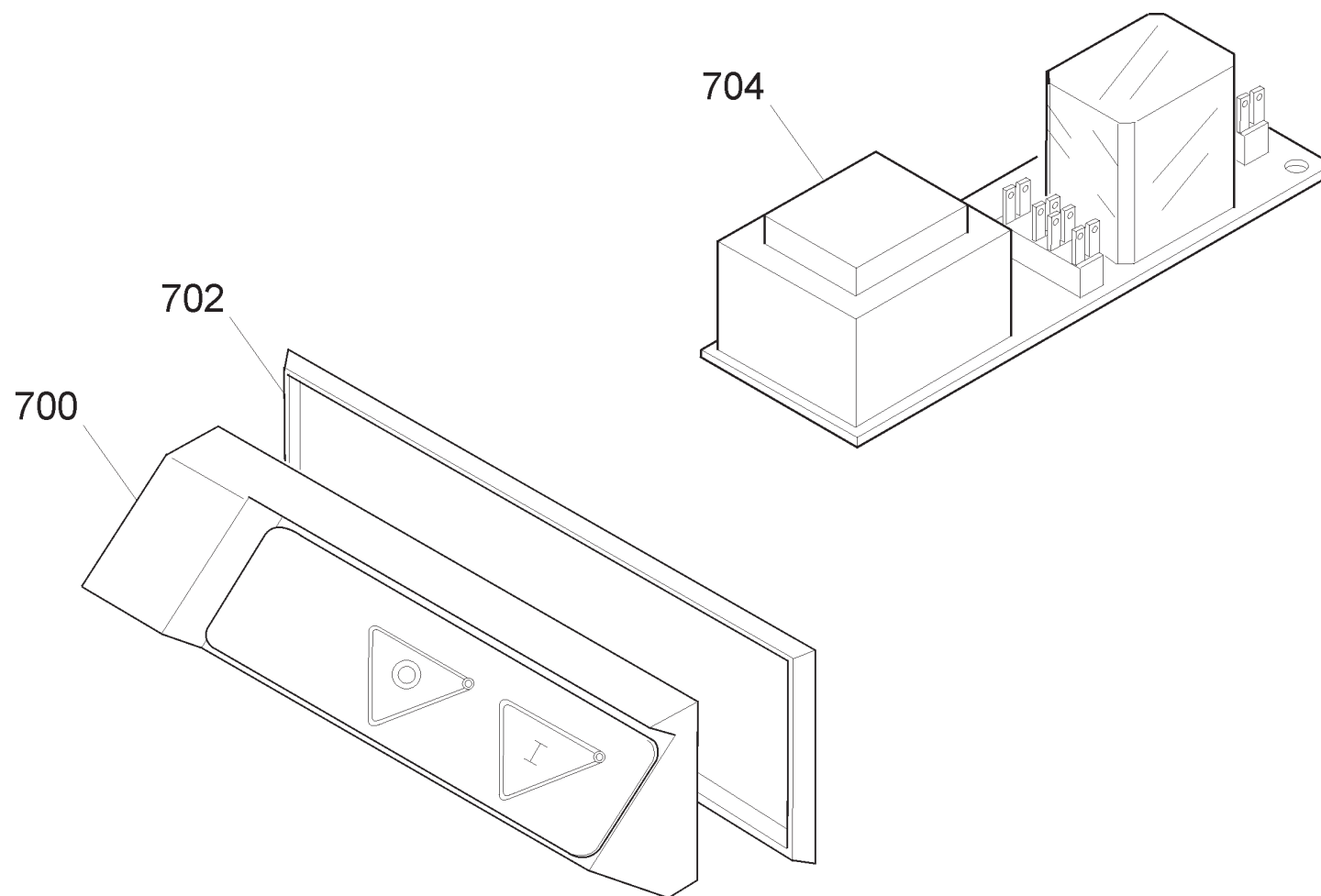
Ver. Dal 07/2006  
Ver. From 07/2006

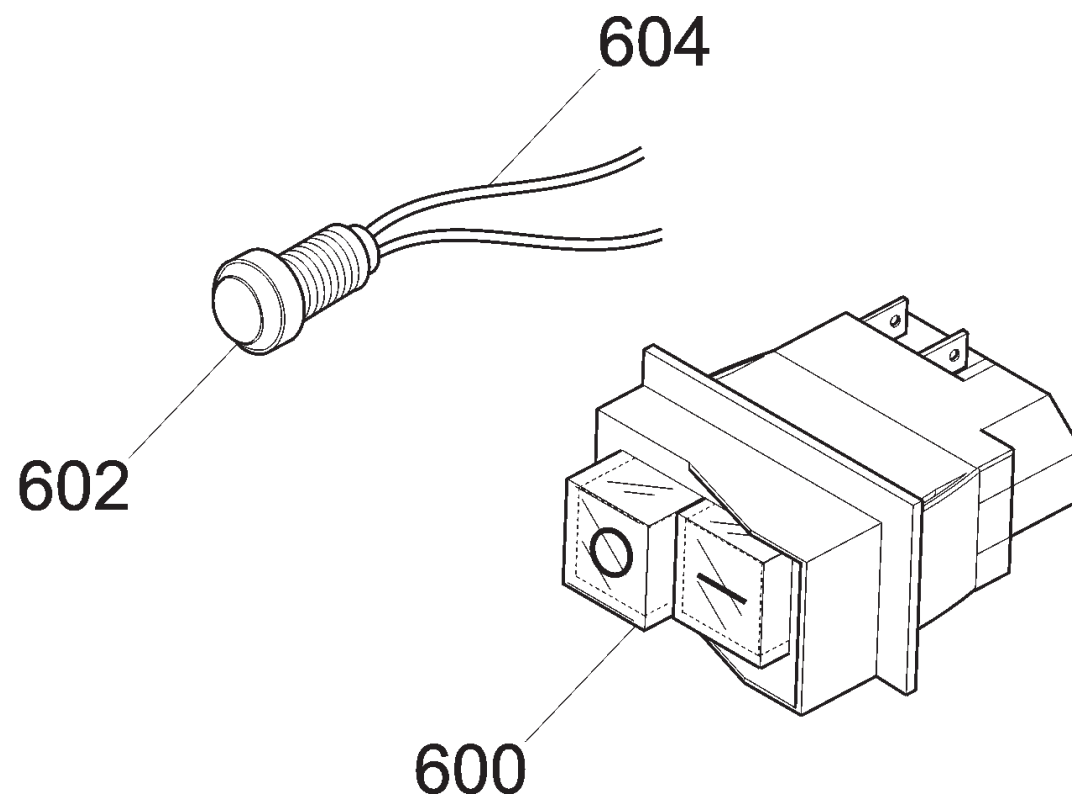














	<i>Schalter 9/</i>	
<b>Ref.</b>	<b>Produktname</b>	<b>Artikel-Nr</b>
600	EIN/AUSSCHALTER 230 V FUER AUFSCH.	19410152
602	KONTROLLAMPE 220-380 V	19410406
	<i>Elektronischer Schalter 1/2</i>	
<b>Ref.</b>	<b>Produktname</b>	<b>Artikel-Nr</b>
800A	ELEKTRON. SCHALTER FUER AUFSCH.	19702004
800B	PUSH-BUTTON PANEL BLUE	19702021
800C	SWITCH COVER WHITE	19702022
802	GUMMI FUER EIN/AUS SCHALTER	19563034
804A	ELEKTRONIC-PLATINE 220V FUR AUFSCH.	19411007
804B	CIRCUIT BOARD 220-380 3-PHASE	19411008
	<i>Elektronischer Schalter 2/2</i>	
<b>Ref.</b>	<b>Produktname</b>	<b>Artikel-Nr</b>
700	SCHALTER MIT FOLIENASTATUR KLEIN	19702000
702	GUMMI FUER SCHALTER	19563030
704A	ELEKTRONIC-PLATINE 220V FUR AUFSCH.	19411007
704B	CIRCUIT BOARD 220-380 3-PHASE	19411008
	<i>Zeichnung 1/5</i>	
<b>Ref.</b>	<b>Produktname</b>	<b>Artikel-Nr</b>
2	BASE/FRAME FOR SLICER MIRRA 220-250	19510101/01
4	FUSS M5 FUER AUFSCH.	19560201
6	INT.BLADE GUARD MIR/LEO 250 FRM 09	19510250.09
100	KNOB WASHER FOR MIRRA	19562145
102A	THICKNESS ADJUSTING KNOB MIRRA	19562402
102B	THICKNESS ADJUSTING KNOB BLUE MRR	19564020
106	RING FOR SLICER	19534062
120	MESSERABZIEHER FUER AUFSCHN.250	19702504
124A	FESTSTELLSCHRAUBE FUER AUFSCH.	19562602
124B	BLU KNOB M8 6 LOB	19564015
126	KNEBEL FUER AUFSCH.	19336010
14A	QUADRETTO PARALAMA CNV-(MRR)	19530901.10
14B	HEX LOCK NUT MIRRA 250C FROM 2010	19530911
15	PERNO X ANELLO MRR 250 C SG	19534082
16	MESSER 250 40/3/210 CE	18250403210F
16T	MESSER 250 40/3/210 TEFLON	18250403210TF
18	BLADE RIM GUARD 250 MRR	19513002/01
22A	LAGERWELLE FUER AUFSCH.220-300	19700332
22B	PULLEY - MRR 220-300 Y10	19700340.10
22C	PULEG.PRES.MONT.MRR."AF"220-300 Y10	19700340AF.10
24	RIEME TB2 345X8 Aufschn.	19310201
28	MICROSWITCH RING FOR SLICER MIRRA	19540901
32	SCHRAUBE/BOLZEN FUER MIRRA	19530532
34A	TIE ROD KNOB M6X5 FOR MIRRA	19562502
34B	BLADE GUARD TIE ROD KNOB MIRRA_BLUE	19564016
36	SLICE DEFLECTOR INOX MIRRA 250CORT	19531005/01
38	SCREW M5 FOR SLICER	19335014
40	VELA MRR.250 STAMP.CE DAL 09 OSS.	195103025C.09

48	SUPPORT CAP_MIRRA V 220-300	19560132
54	SCREW FOR TABLE_MIRRA 220-250	19335060
58	TABLE SUPPORT_SLICER MIRRA 220-250	19510701/01
62	LARGE WASHER	19563002
64	THICKNESS PLATE SLIDE FOR MIRRA	19500101/01
65	MOVEMENT HEAD D8,5XHT2 FOR SLICER	19563201
66	SLIDE GUIDE FOR SLICER MIRRA	19540601
74	SPRING PIN FOR SLICER MIRRA 220-250	19531360
78	SPRING FOR MIRRA 220-250	19390201/02
80	TABLE SLIDE PIN_SLICER MIRRA D.12MM	19530701
82	STUD BOLT 6X25 FOR SLICER	19337002
90	CAM PIN FOR MIRRA	19336062/01
92	CAM FOR MIRRA 220/275/300	19563505LG
Zeichnung 2/5		
Ref.	Produktname	Artikel-Nr
202	PLATE FOR SLICER	19533200
204	PIAST. SGANCIO CARR. MRR CE	19533210
206	DRUCKSTUECK ABWURF 300/385 CE	19565001
208	PIN _ SLICER 220-250 CE	19534034
212	CARRIAGE FOR SLICER	19500516
214	BUSHING 18.20.20	19324108
224	RELEASE SPRING 220-250 CE	19390600
226	BUCHSE	19534024
228	LOCKRING EXT._ SLICER 220-250 CE	19534029
232	PIASTRINA CARRELLO 220-250-300V CE	19533001
236	CARRIAGE BEARING 626 2RS R50_MIRRA	19320103
242	ROUND RAIL FOR CARRIAGE_SLICER	19530601
244	ROUND SLIDE BAR SPRING MIRRA220-250	19390111
246	SCREW T.20 FOR SLICER MIRRA	19335001
248	SQUARE RAIL MIRRA	19540101
254	ROUND SLIDE BAR SPRING MIRRA220-250	19390101
255	STUD BOLT M 8X30 FOR MIRRA CE	19336039
256A	GRIFF MESSERSCHUTZ SCHRAUBE	19562504
256B	BLADE GUARD TIE ROD KNOB M8 _ BLUE	19564013
257A	KNOB FOR MEAT PRESS/CARRIAGE	19562901
257B	BLU KNOB M8 6 LOB	19564015
258	GAMBO MRR CE OSSIDATO	19510616
264	HOPPER MIRRA 250	195104011
268	DISTANZ.PARACOLPO MRR.D21X12MM	19561520
270	SHAFT FOR SLICER PUSHER MRR250	19530402
274	BUSHING 10.12.10	19324101
278	BUFFER D6,5X30 FOR MIRRA	19563208
280	MEAT PRESS MRR 250 CE Y08	19510902C.08
282	DISTANZRING D12X150 MIRRA CE PRO	19541508
284A	KNOPF FUER RESTEHALTER AUFSCH.CE	19562904
284B	MEAT PRESS KNOB - BLUE	19564012
286	DISTANZRING D.20X15MM	19521601
288	STUD BOLT M5 X 30	19336003
290	WASHER 5 X 20	AVA290
292	BLIND NUT M5	AVA292

294	HANDSCHUTZ FUER MIR/PRL/TOP 220-250	19562322
	<i>Zeichnung 3/5</i>	
<b>Ref.</b>	<b>Produktname</b>	<b>Artikel-Nr</b>
2	END WEIGHT MRR-CNV "CE"	19801233
202	PLATE FOR SLICER	19533200
204	PIAST. SGANCIO CARR. MRR CE	19533210
206	DRUCKSTUECK ABWURF 300/385 CE	19565001
208	PIN _ SLICER 220-250 CE	19534034
212	CARRIAGE FOR SLICER	19500516
214	BUSHING 18.20.20	19324108
224	RELEASE SPRING 220-250 CE	19390600
226	BUCHSE	19534024
228	LOCKRING EXT. _ SLICER 220-250 CE	19534029
232	PIASTRINA CARRELLO 220-250-300V CE	19533001
236	CARRIAGE BEARING 626 2RS R50 _ MIRRA	19320103
242	ROUND RAIL FOR CARRIAGE _ SLICER	19530601
244	ROUND SLIDE BAR SPRING MIRRA220-250	19390111
246	SCREW T.20 FOR SLICER MIRRA	19335001
248	SQUARE RAIL MIRRA	19540101
254	CARRIAGE BUFFER M5X12 MIRRA 220-300	19560170
255	STUD BOLT M 8X30 FOR MIRRA CE	19336039
256A	GRIFF MESSERSCHUTZ SCHRAUBE	19562504
256B	BLADE GUARD TIE ROD KNOB M8 _ BLUE	19564013
258	GAMBO MRR CE OSSIDATO	19510616
260	SCREW, MEAT BED MIRRA 220-250	19335042
264	CARRIAGE FOR SLICER MIRRA 250	1,95E+016
268	END WEIGHT ROD SUPPORT _ MIRRA Y06	19525062
270	END WEIGHT ROD _ SLICER MIRRA 250 Y06	19530402.06
272A	END WEIGHT ROD SUPPORT _ MIRRA Y06	19525060
272B	BLOCCH.INCL.ASTINA PIATTO MRR Y10	19525060.10
274	BUSHING 10.12.10	19324101
277	MEAT PRESS PIN FOR SLICER 250	19563213
278	PUSHER BUFFER D8,5XH36	19563206
280A	MEAT PRESS FOR SLICER	19510902C.06
280B	MEAT PRESS MRR 250 CE Y08	19510902C.08
282	DISTANZRING D12X150 MIRRA CE PRO	19541508
284A	KNOPF FUER RESTEHALTER AUF SCH.CE	19562904
284B	MEAT PRESS KNOB - BLUE	19564012
294	HANDSCHUTZ/PLEXIGLAS MIRRA 220-250	19562322.06
	<i>Zeichnung 4/5</i>	
<b>Ref.</b>	<b>Produktname</b>	<b>Artikel-Nr</b>
-	SHARPENER ASS.Y _ MIRRA 250C NORM/DOM	19800031
402	CAPP.MRR 220-250G 300SV CE OSSIDATA	19511202C
404A	SHARPENER KNOB M5	19562700
404B	KNOB FOR SLICER BLU	19564018
410	SHARPENER SPRING _ SLICER 250-300	19390303
412	DEBURRING ROD _ SLICER 250-300	19540703
416	SCHLEIFSTEIN D.40 H.8 F.6 AUF SCHN	19300201
424	SHARPENING ROD _ SLICER 250-300	19540704

426	DEBURRING BUTTON _ SLICER 250-300	19550203
427	BUTTON SCREW _ SLICER 250-370	19335025
442	PERNO COL.FR.MRR.250G/300V L=62,5	19540432
450	PRIG.DIST.AFFILAT. M4 X 35 MRR C	19336041
456	SHARPENING MOUNT _ MIRRA VERT.220-300	19021332
468	SHARPENING BUTTON _ SLICER 250-300	19550202
470	SCHLEIFSTEIN D.40 H.11 F.6 AUFSCHN	19300101
<i>Zeichnung 5/5</i>		
<b>Ref.</b>	<b>Produktname</b>	<b>Artikel-Nr</b>
626	KONDENSATOR 8 uF _ MIRRA/QUARZO	19410301
632	ELECTRICAL HOUSING FOR SLICER	19563125
634	TERMINAL BOARD FOR SLICER	19410822
634-1	SUB-TERMINAL BLOCK	19410820
642	WIRE HOUSING SPACER RING	19561500
644A	KABEL MIT STECKER 1-PH SCHUKO	19410502
644B	US POWER CORD 1PH FOR SLICER	19410503
644C	UK POWER CORD SINGLE PHASE	19410504
644D	AUSTRALIAN POWER CORD, 1PH	19410508
644E	JAPANESE POWER CORD 1PH	19410511
648A	MOTOR FUER AUFSCH. MIRRA 230/50/1	19400101
648B	MOTOR FOR SLICER MIRRA 220/60/1	194001016
658	GROUND WIRE _ SLICER 220-250 UL APPR.	19410738
662	CAVO MICRO X 250 TUV	19410704
664	ENDSCHALTER FUER AUFSCHNITTMASCHINE	19410201
668	S/S MOTOR ROD FOR SLICER MIRRA	19540501
670	MOTOR TIE ROD, SLICER 250	19336015
680	BOTTOM COVER SLICER MRR 220-250	19563151