




REF	ARTIKELNNUMMER	KODE	Q
BE		LF21320FX-7/2	1
01	POWER CORD + PLUG CEE 3P + T.	If1010047	1
02	POWER LEAD, MOTOR TF/1,5	LF1010055	1
03	POWER LEAD, MOTOR TF/1,5	LF1010055	1
04	STRAIN RELIEF + NUT	LF1010063	1
05	DADO OTT.NICH.PG 11	LF1010063A	1
05	DADO OTT.NICH.PG 11	LF1010063A	1
06	PRESSACAVO PLASTICA PG 7	LF1010068	1
07	DADO PLASTICA PG 7	LF1010068A	1
08	STRAIN RELIEF + NUT	LF1010063	1
09	DADO PLASTICA PG 11	LF1010072A	1
10	MORSETTO A PETTINE X EQUIPOTENZIALE	LF1030522050	1
11	MICROSWITCH W/LEVER 	LF1033306	1
12	CASSETTA GW44209-BOC04846-EC410C8	LF1034018	1
13	S/STEEL BUTTON W/LIGHT Y10	19410136.10	1
14	S/STEEL BUTTON Y10	19410135.10	1
15	IMP. ELET-MECC PS TCM 30-60-90	LF1091290060	1
16	SWITCH FACEPLATE FOR MASTER	LF1095000	1
17	CUSCINETTO 10-16-4,3 HAMB. AUT	LF1131032010	1
18	BEARING SP 7205	LF1144504	1
19	CUSCINETTO SB 203 PP JFK SO 3100-TCM	LF1109001	1
20	CARRIAGE BEARING 626 2RS R50_MIRRA	19320103	1
24	SEAL RING 30-62-7	LF1243001	1
26	TAPPO COPRI FORO D.19 PULSANTI NO CE	LF1438705	1
27	DIST. PLAST 6,3X15X15 FRONT.VASCA	LF1493406	5
28	DIST. PLEX 79X34X7 OMEGA TCM-ME	LF1493420	1
29	DISTANZ. RIDUTTORE BOCCA TCM 30-60 VERT	LF1493701	1
30	DISTANZ LAMA 16/9/6 INT.MAN	LF2029990	10

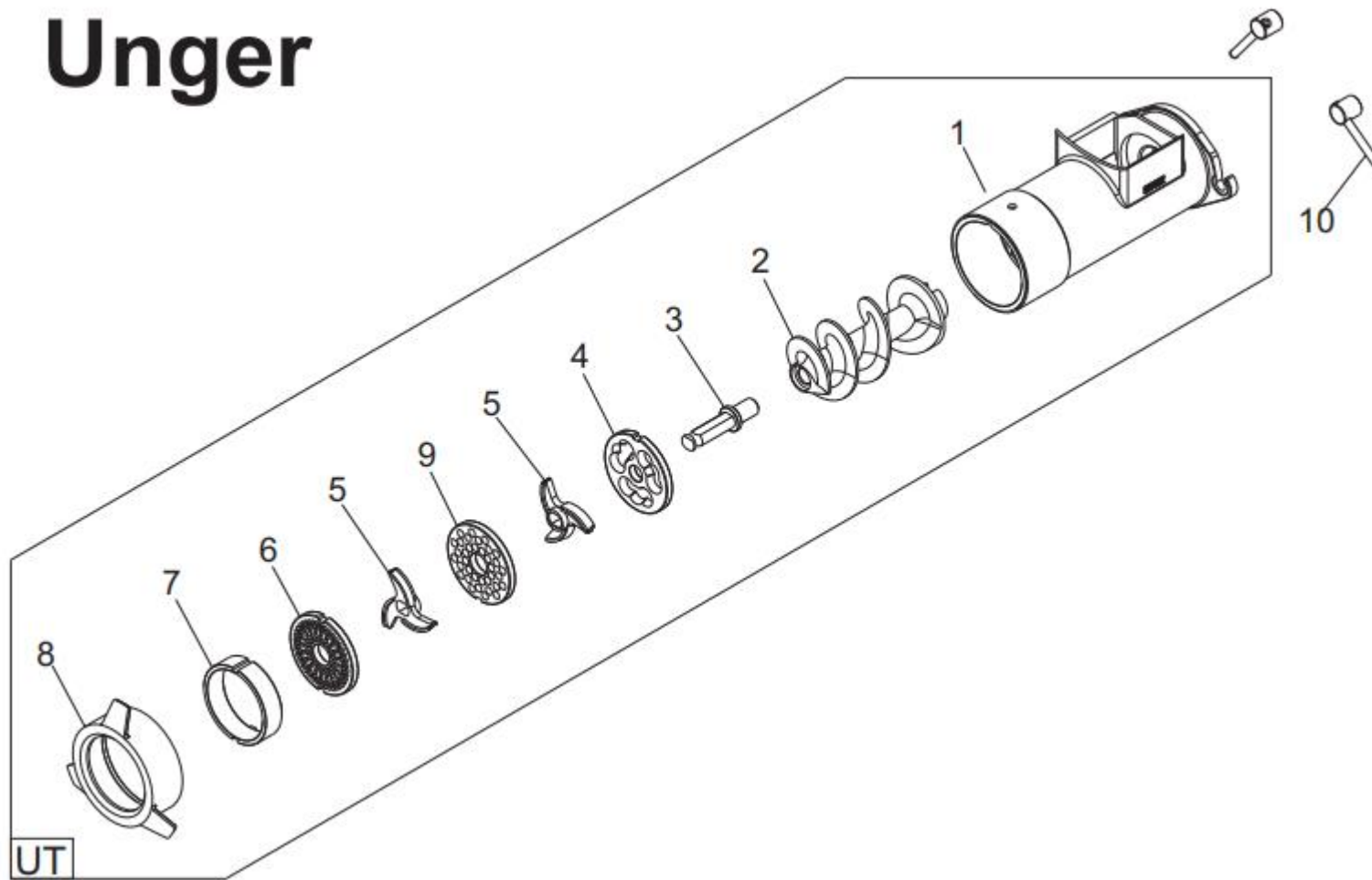
REF	ARTIKELNNUMMER	KODE	Q
31	DIST.ACC.ZINC. D.15 M8X35 TCM VERT	LF1493710	1
32	BUSH 15X22X28 L=14	LF1495001	1
33	HANDLE 236-148 M6_COLLECTION TRAY	LF1510010	1
34	S/S KNIFE BICOMPONENT _ TC 32	LF1533000S	1
35	S/S PLATE MM 4,5 TC 32_2C BICOMPONE	LF1533045I2S	1
36	SWIVEL.CASTER W/BRAKE D.100	LF1534401	1
37	S/S NON-SWIVEL.CASTER D.100	LF1541005	1
38	MOT. M80 HP 1,5 B14 4P 400/50 TF	LF1844601	1
39	MOTORE TC B34 M100/90 4P 4HP 400/50	LF1891030201	1
40	MICROSWITCH SUPPORT SO 1650 IX	LF2001019	1
41	FEEDING WORM PIN _ TC 32 ☆	LF2033013	1
42	STAFFA SUPP. MOT. TC 42 VERT	LF2034609	1
43	FLANGIA ALL SUPP. BOCCA TCM30-60	LF2093615	1
44	S/STEEL WHEEL TC 32 BARCELONA	LF2035964	1
45	PERNO L.77,5 SUP.CUSC.PRESEN.PIASTRA TCM	LF2039475	1
46	PIASTRINA SUPPORTO MICRO TCM-TC 42 IND	LF2039480	1
47	FEEDING WORM TC 32 BUFFALO	LF2039703	1
48	STUD BOLT, MOUTH RELEASING TC32 MON	LF2039722	1
49	LEVER NUT _ TC 32-42 MONTANA	LF2039743	1
50	SPESSORE PERNO TRAS CON BATTUT.ME-IP30	LF2043023	1
51	GEAR BOX MRV 063 B14 R=49	LF2043040	1
52	PERNO TRASC. PALA ME-IP 30 MP COMP	LF2043344	1
53	LEVA BARRA CERNIERA CAMPANA SP 40	IW2071240056	1
54	BOCCA MICROP. IX 2CH TCM 30	LF2091030095	1
55		00-OUT	1
56	BOCCOLA EST.SUPP.COP TCM 32 SM	LF2093028	1
57	SHAFT - MASTER 30	LF2093033	1
58	COPERCHIO VASCA TCM 32 SM	LF2093040	1

REF	ARTIKELNUMMER	KODE
58	COPERCHIO VASCA TCM 32 SM	LF2093040
59	MANIGLIONE CHIUS. COP TCM 32 SM	LF2093044
60	PERNO TRASC. ELICA IX TCM 32 VERT	LF2093075
61	MOLLA GAS 150N COP L.M.TCM 30/60/90	LF2093347
62	MOLLA GAS 50N COP TCM 30	LF2093348
63	OMEGA SUPP. SCATOL. ELET. TCM 90L	LF2093427
64	MOLLA ASTINA PERNO TRASC TCM 90L	LF2093465
66	CARENA INOX MICROP. TCM 30L	LF2093701
67	CARTER POST. CARENA TCM 30L	LF2093705
68	PIEDE DRITTO MICROP. TCM30 / TC32-42 IND	LF2093710
69	ASTA DX SUPP. COPER. VASCA TCM 30L	LF2093715
70	ASTA SX SUPP. COPER. VASCA TCM 30L	LF2093716
71	OMEGA SUPP. RID MESCOLAT TCM 30L	LF2093719
72	OMEGA SUPP. MICRO RIDUT. TCM 30-60L	LF2093731
73	BARRA QUADRA RIBALT. COP. TCM 30L	LF2093737
74	ASTINA PERNO TRASC.ELICA TC TCM 30L	LF2093748
75	RID. NMRV 063 I=7,5 P 90 B14 TCM 30L	LF2093760
76	ENDSCHALTER FUER AUFSCHNITTMASCHINE	★ 19410201
77	SUPP. CUSCIN. CARENA OEM SP	IW2071250021
78	FLAT WASHER DIN 125 D 6	IX2125006
79	FLAT WASHER DIN 125 D 8	IX2125008
80	WASHER DIN 125 D 10	IX2125010
81	BLIND NUT DIN 1587 M5	IX21587LC005
82	CAP NUT DIN 1587 M 6	IX21587LC006
83	CAP NUT DIN 1587 M8	IX21587LC008
84	RETAINING RINGS DIN 471 D 25E	IX2471025
85	TOOTHED WASHER DIN 6798-A D 8E	IX26798A008
86	LINGUETTE DIN 6885/A 8X7X40	IX26885A080740

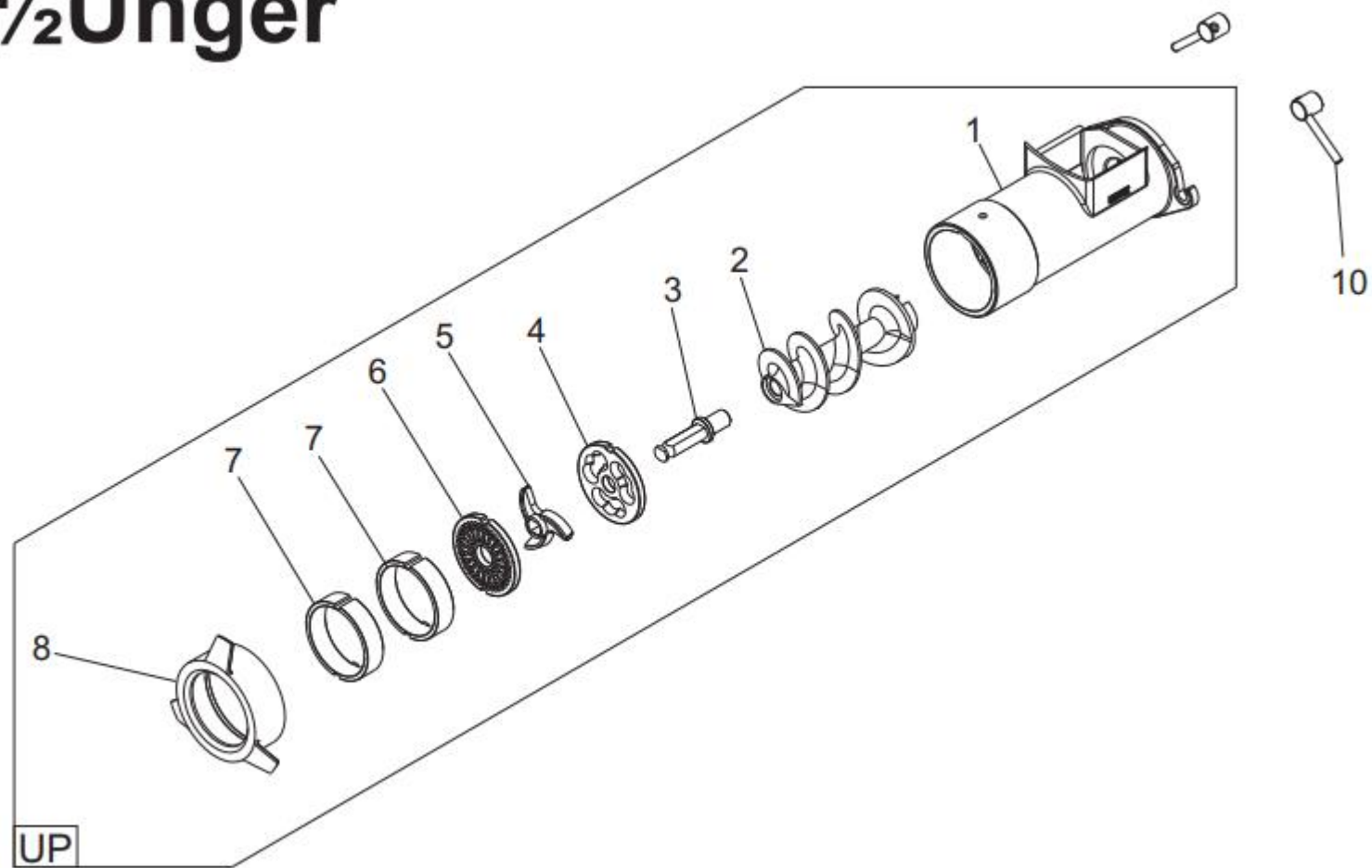
REF	ARTIKELNUMMER	KODE	Q
86	LINGUETTE DIN 6885/A 8X7X40	IX26885A080740	1
87	SCREW TSPEI DIN 7991 M 6X16	IX27991006016	10
88	WASHER LARGE DIN 9021 D 5X15	IX29021005015	10
89	WASHER LARGE DIN 9021 D 6X18	IX29021006018	10
90	RONDELLA F.LARGA DIN 9021 D 6X24	IX29021006024	10
91	WASHER DIN 9021 D 8X24	IX29021008024	10
92	WASHER THICK DIN 9021 D 8X32	IX29021008032	10
93	VITE TCEI DIN 912 M 5X10	IX2912005010	10
94	HEX.SOCKET HEAD CAP SCREW M6 X 20	IX2912006020	10
95	VITE TCEI DIN 912 M 8X18	IX2912008018	10
96	HEX.SOCKET HEAD CAP SCREW M8 X 20	IX2912008020	10
97	VITE TCEI DIN 912 M 8X35	IX2912008035	10
98	VITE TCEI DIN 912 M 8X80	IX2912008080	1
99	VITE SENZA TESTA DIN913 M8X30 P.PN	IX2913008030	10
100	GRUB SCREW DIN 913 MX45 CE	IX2913008045	5
101	HEX.SCREW DIN 933 M 6X20 T.F.	IX2933006020	10
102	SCREW TE DIN 933 M 8X16 T.F.	IX2933008016	10
103	HEX.SCREW DIN 933 M8 X 20	IX2933008020	10
104	HEX.NUT DIN 934 M 5	IX2934005	10
105	HEX.NUT DIN 934 M8	IX2934008	10
106	DADO AUTOBLOCC. ES DIN 982 M 5 ALTO	IX2982005	10
107	LOCKNUT ES DIN 982 M6 ALTO	IX2982006	10
108	DADO AUTOBLOCC. ES DIN 982 M 8 ALTO	IX2982008	10
109	VITE POELIERS M 4X12	IX2POEL004012	10
110	VITE POELIERS M 5X16	IX2POEL005016	10
111	SCREW POELIERS M6X10	IX2POEL006010	10
112	SCREW POELIERS M 8X60	IX2POEL008060	5
113	CABLE,MICRO-PRESSURE SWITCH_JS IDRA	LF1013007	1

115	COLLO IX BOCCA TC 32 2 CUSC.TCM 60L	LF2093620	1
116	PROT. CUSC.32005X TC GOL 1204JV	LF1193705	1
117	BALL BEARING 32005 TC32 	LF1193701	1
118	DIST. 30X40X7 PERNO TRASC TCM 32 V	LF2093087	1
119	BEARING 51206 	LF1134001	1
120	DIST. 25X30X4 PERNO TRASC TCM 32 V	LF2093088	1
121	ANEL.TEN. 40-62-7 DOPPIO LABBRO VITON	LF1239405	1

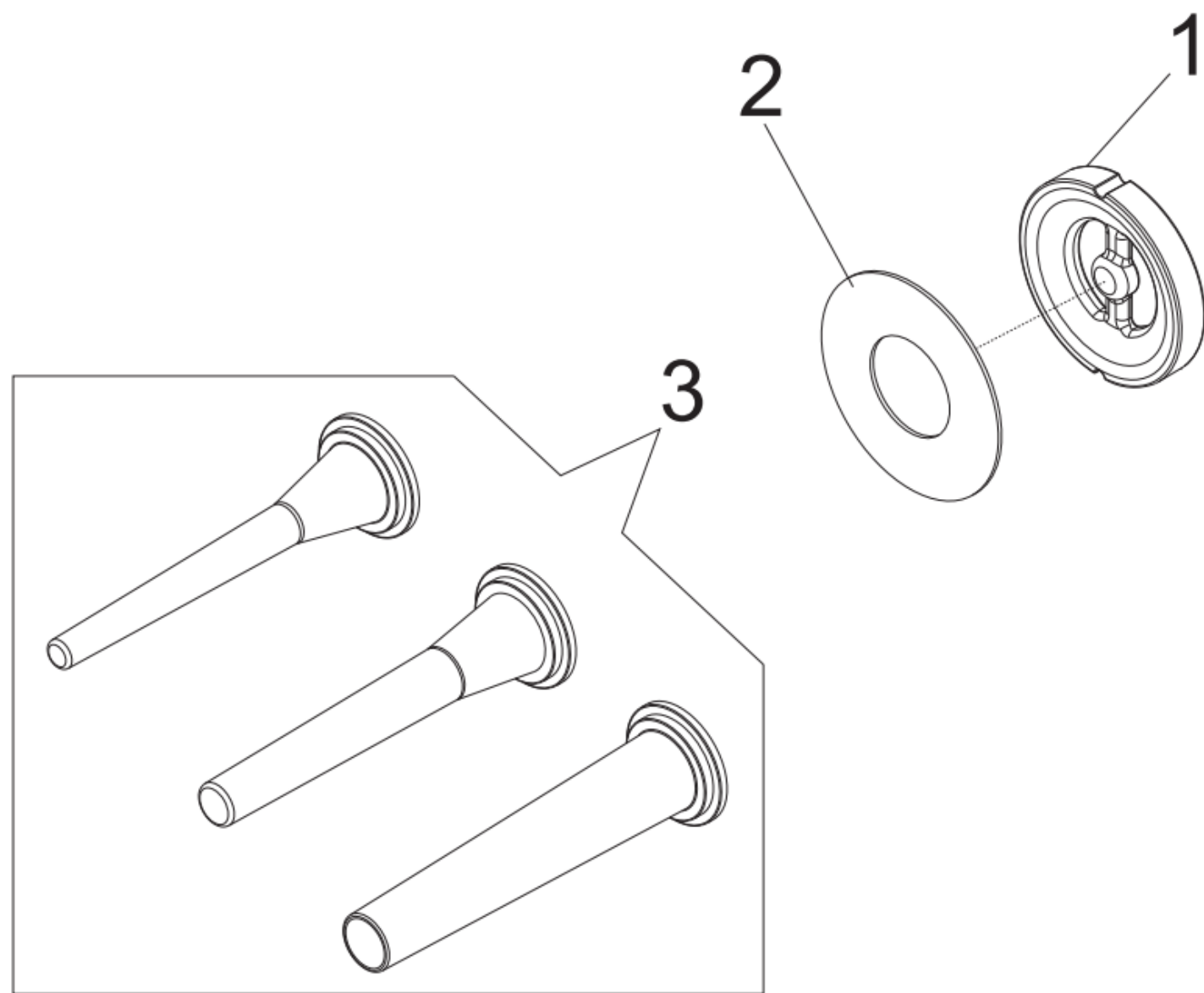
Unger



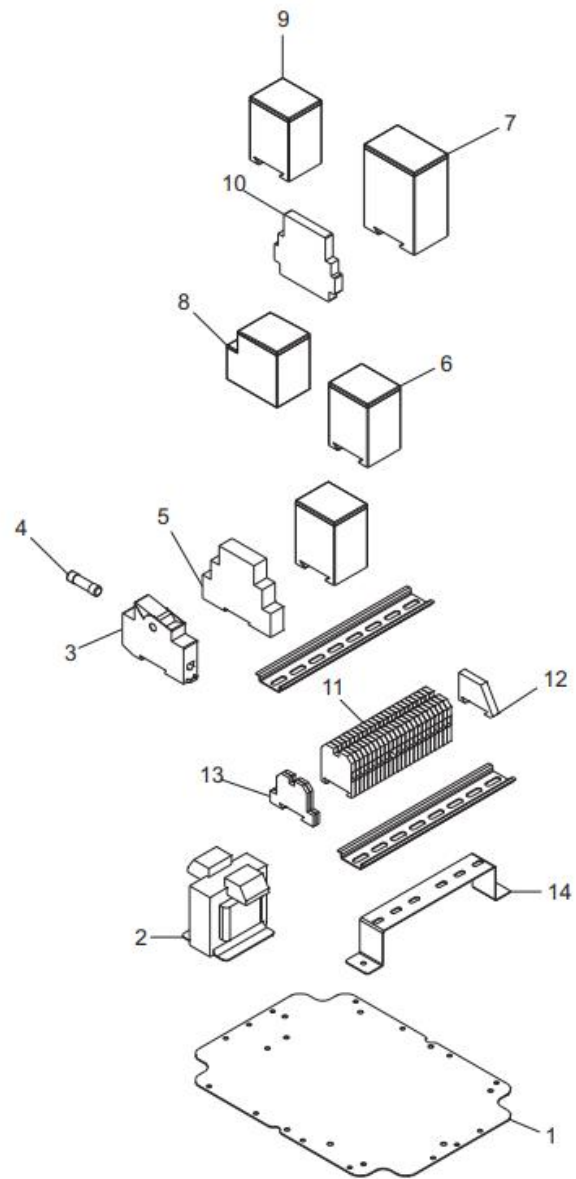
1/2 Unger



REF	ARTIKELNNUMMER	KODE	Q
UP	BOCCA TC SM 32 NO CE UNGER PARZ 2D	LF21320FUP-9	1
UT	BOCCA TC SM 32 NO CE UNGER TOT 2D	LF21320FUT-9	1
01	BOCCA UNGER 2D SATINATA TCM 30	LF2093007	1
02	FEEDING WORM TC 32 BUFFALO	LF2039703	1
03	UNGER FEEDING WORM PIN _ TC 32	LF2033202	1
04	COARSE PLATE FOR TC 32	LF15332ZZ	1
05	UNGER KNIFE FOR TC 32	LF1533200	1
06	UNGER PLATE MM 5 TC 32 _ 2C	LF1533250/2	1
07	SPACER RING 2C TC 32 UNGER	LF15332DD2X	1
08	FIXING SCREW PS 3 _ TC 32	LF2035965	1
09	UNGER PLATE MM 10 TC 32	LF1533210	1
10	LEVER NUT _ TC 32-42 MONTANA	LF2039743	1

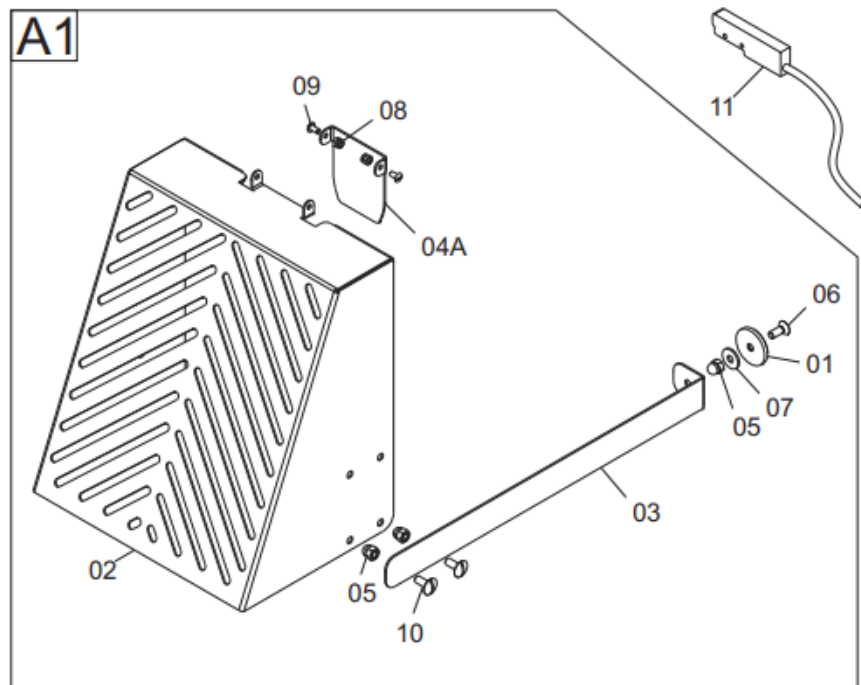


REF	ARTIKELNUMMER	KODE	Q
01	STUFFER SPACER FOR TC 32	LF2038615	1
02	STUFFER LOCKING RING FOR TC 32	LF2038618	1
03	SET POLYETH.NOZZLES Ø 10-18-25 _ IS	LF2011015	1

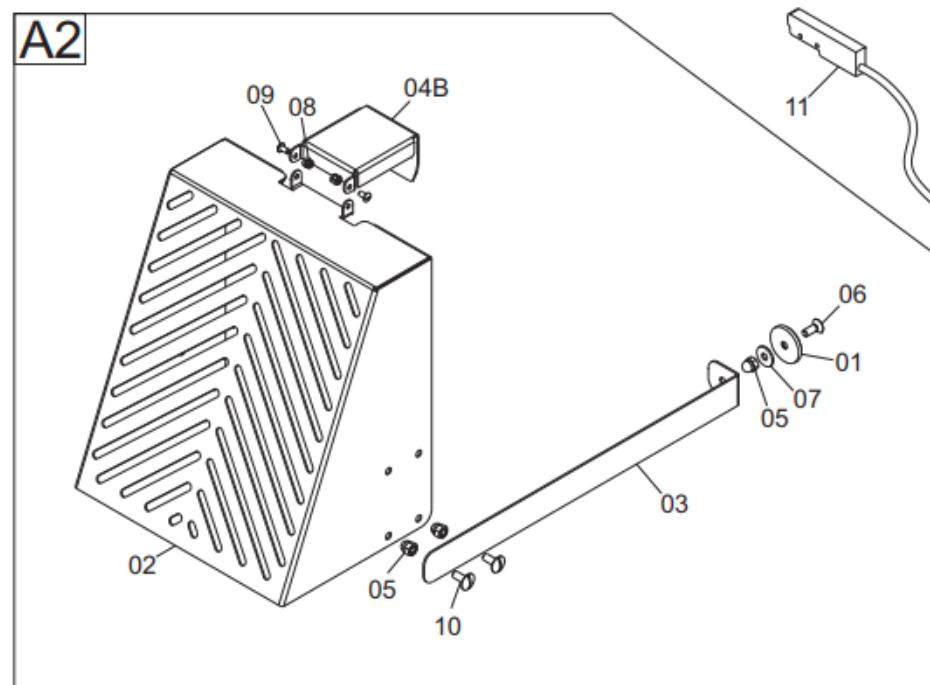


REF	ARTIKELNNUMMER	KODE	Q
01	PIASTRA DI FONDO 44219 206X286	LF1034014	1
02	TRASF. 30 VA 230-400/12-12	LF1034507	1
03	FUSE HOLDER BCH1X38 32A 690V	LF1034509	1
04	FUSIB.RIT. 10,3X38 CH10GL 4A	LF1034510	1
05	RELETEMP. 0-10 MIN 24 VAC TV49	LF1034532	1
06	TELERUT. 24V 16A SIEM 3RT2016-1AB01	LF1034561	1
07	REMOTE CTRL.SWITCH25A 3RT1025-1AC20	LF1034562	1
08	PROT.TERM. 2,8-4,0 A 3RU2116-1EB0	LF1034564	1
09	THERMAL PROTEC.9-12,5A 3RU1126-1KB0	LF1034568	1
10	AUXIL.CONTACT 1NO+1NC 3RH1921-1EA11	LF1034570	1
11	MORSETTO SIEMENS 8WA10111DH11 XUL	LF1091290010	1
12	MORSETTO TERMIN. KOMBI GUIDA DIN	LF1091290015	1
13	MORSETTO MASSA T. KOMBI GUIDA DIN	LF1091290020	1
14	SUPPORTO MORSETT.Q.EL TCM 30-90 BZ	LF2091030090	1

ENTERPRISE



ENTERPRISE LONG UNGER UNGER LONG (Da / From 2011)



REF	ARTIKELNUMMER		KODE	Q
A1	ASS.PROT.BOC. IX COR M.NOR TCM 30-60-90		LF0950002	1
A2	ASS.PROT.BOC. IX LON UNG M.NOR TCM 30		LF0950003	1
01	MAGNET M634	★	LF1039710	1
02	PROTEZION.BOCCA X PIAST>8 TC TCM 32		LF2093062	1
03	ASTA SUPP MAG PROT B. L365 GOL-TCM		LF2093064	1
04A	SUPP L.10 PROT.BOCCA TCM30-60-90		LF2093066	1
04B	SUPP L.76 PROT.BOCC TCM30-60-90 UNG		LF2093068	1
05	CAP NUT DIN 1587 M 6		IX21587LC006	10
06	SCREW TSPEI DIN 7991 M 6X16		IX27991006016	10
07	WASHER LARGE DIN 9021 D 6X18		IX29021006018	10
08	DADO AUTOBLOCC. ES DIN 982 M 4 ALTO		IX2982004	10
09	POELIERS SCREW M 4X8		IX2POEL004008	10
10	SCREW POELIERS M6X10		IX2POEL006010	10
11	MICROINTERRUTTORE E531 TB 24 VAC 3A		LF1050010	1