



Viale Europa 24, 37045 San Pietro di Legnago Verona Italy

**SPARE PARTS CATALOGUE
ERSATZTEILKATALOG
CATALOGUE PIECES DETACHEES
CATALOGO PARTI RICAMBIO
CATALOGO DE PIEZAS DE RECAMBIO
CATALOGO PECAS, DE REPOSICAO**

Catalogo parti di ricambio valido
dalla matricola 4334884 alla matricola 4345556

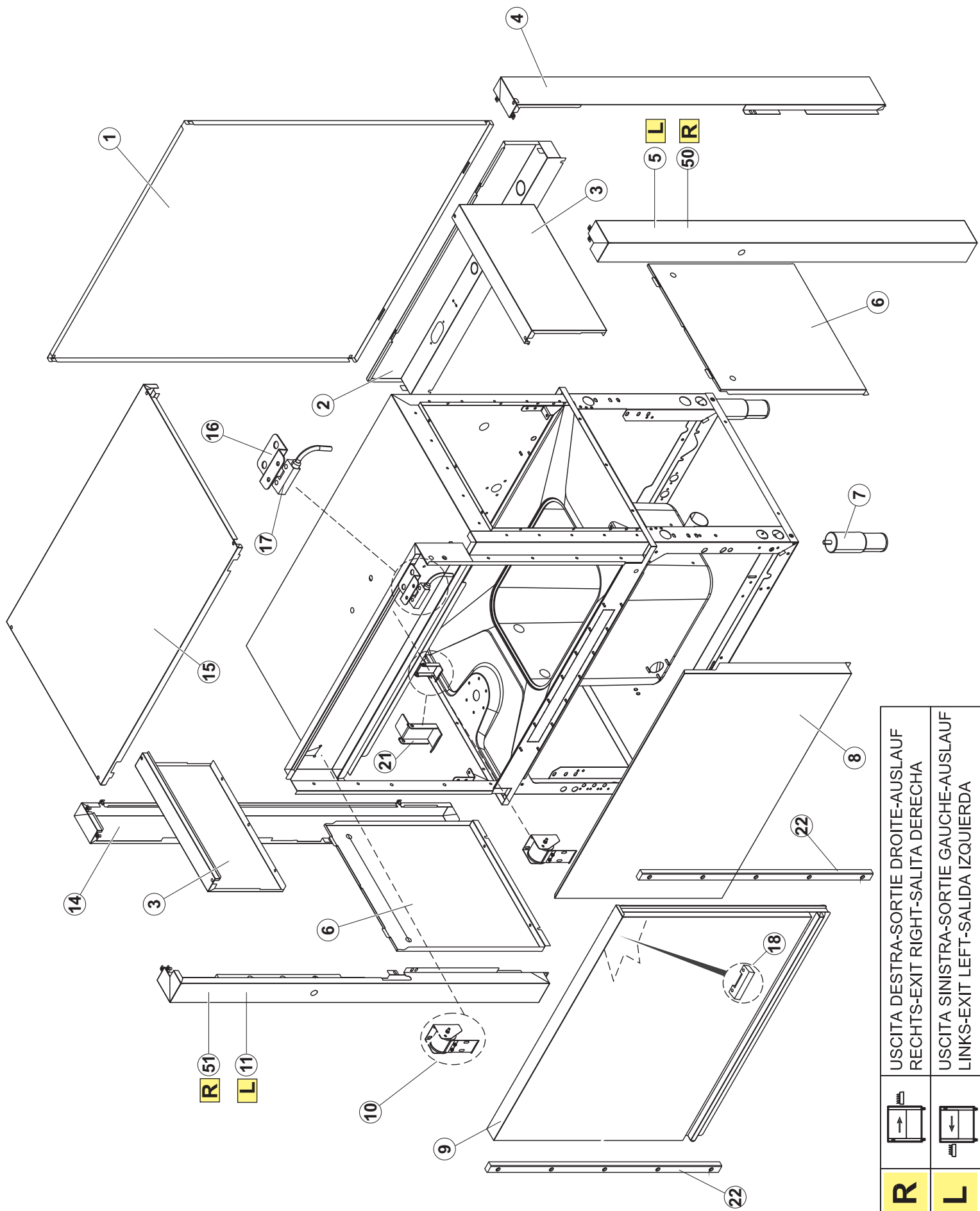
Catalogue pieces detachees
du numero de Série n. 4334884 jusqu'à n. 4345556

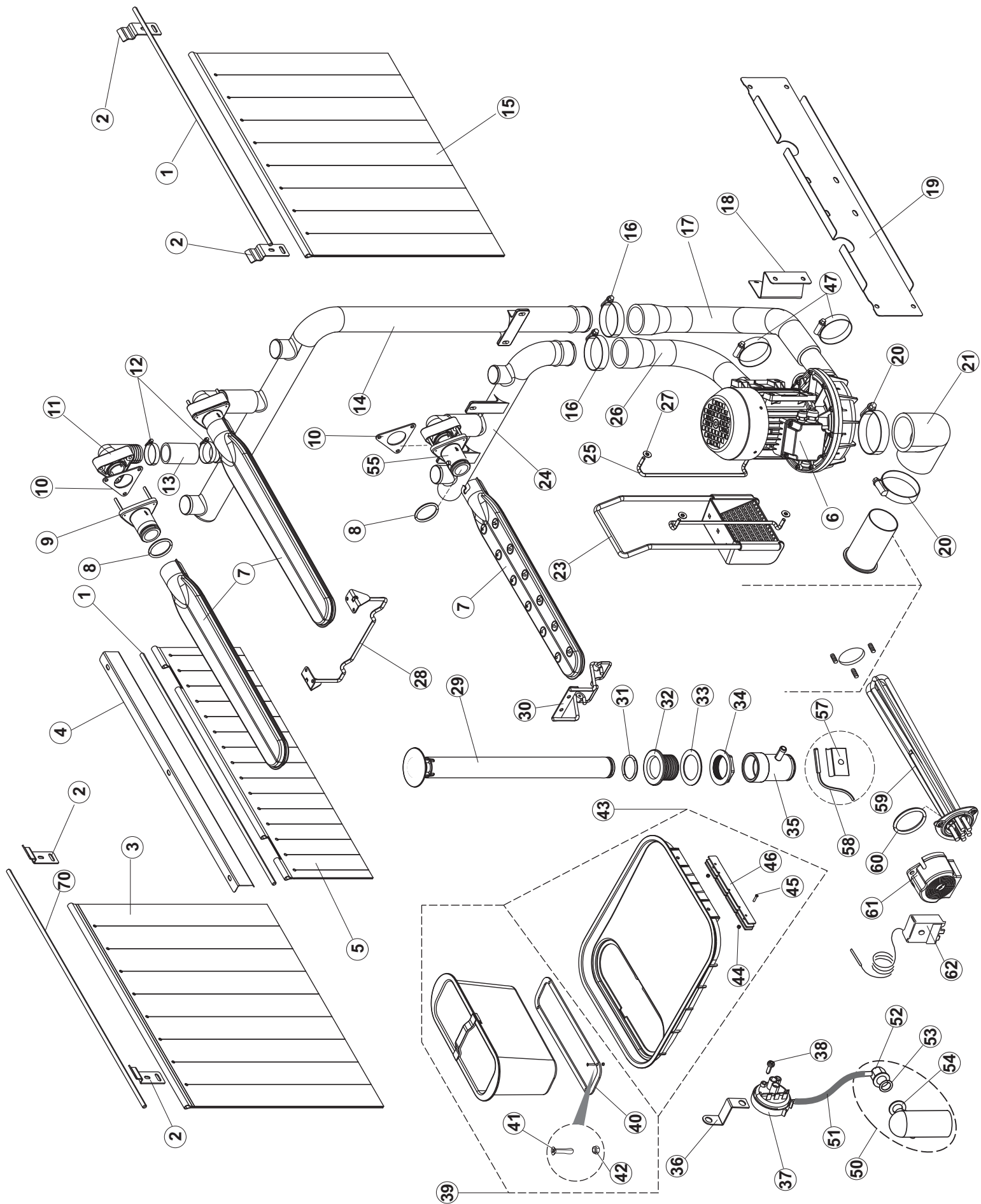
Ersatzteilkatalog
gültig ab Serien-Nr. 4334884 bis Serien-Nr. 4345556

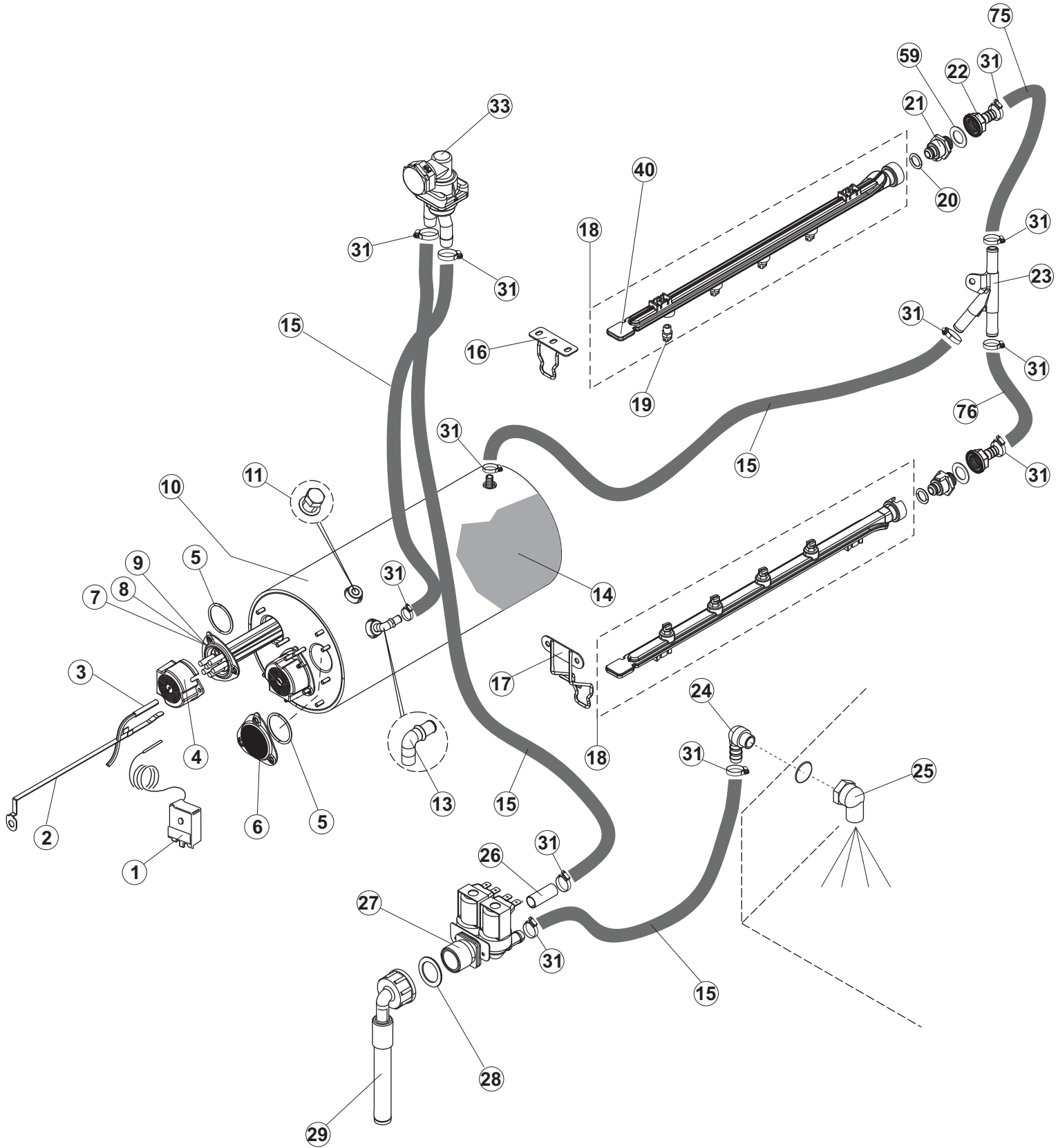
Spare parts catalogue
valid from serial no. 4334884 to serial no. 4345556

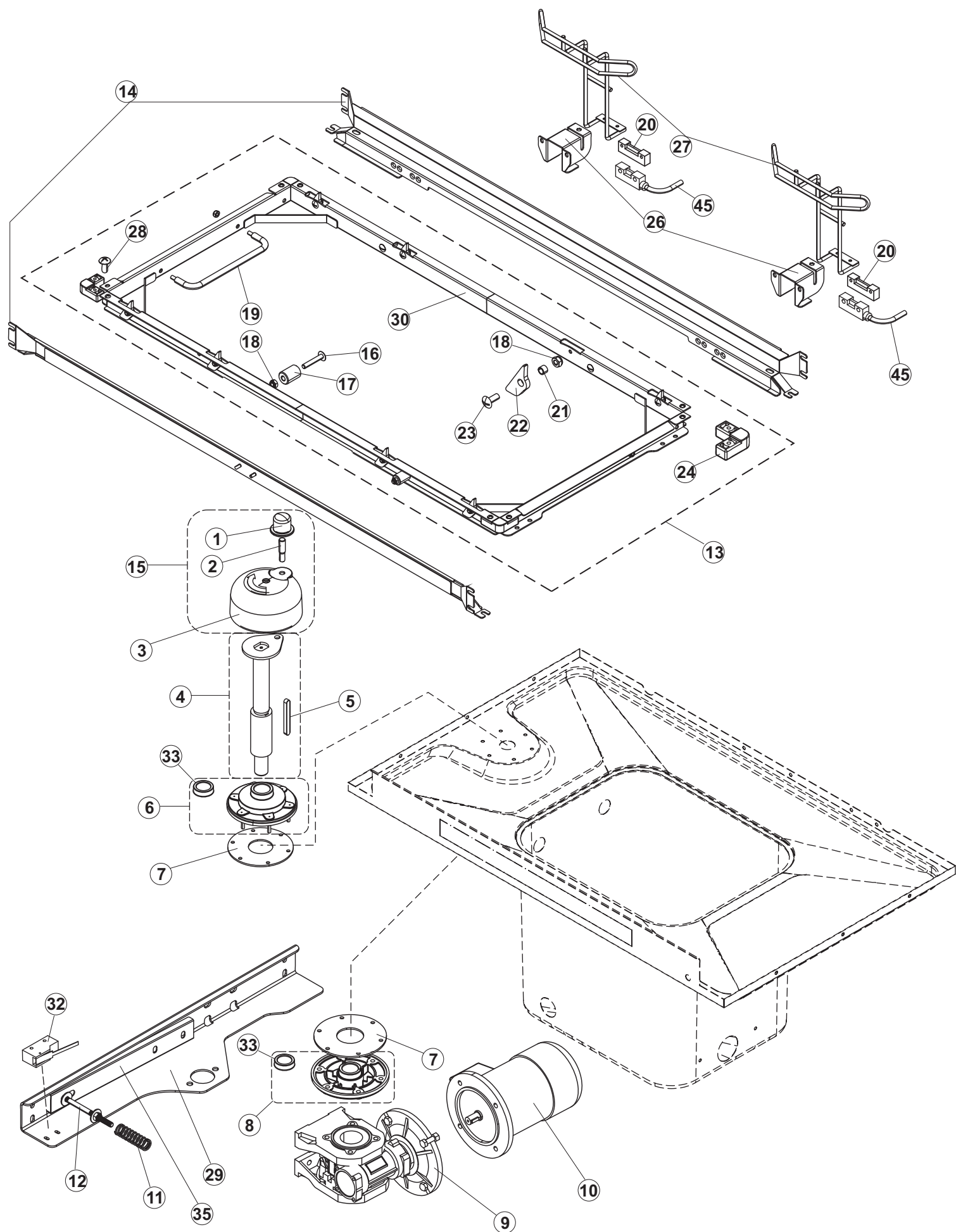
Catálogo de peças de reposição
número de série 4334884 até o número de série 4345556

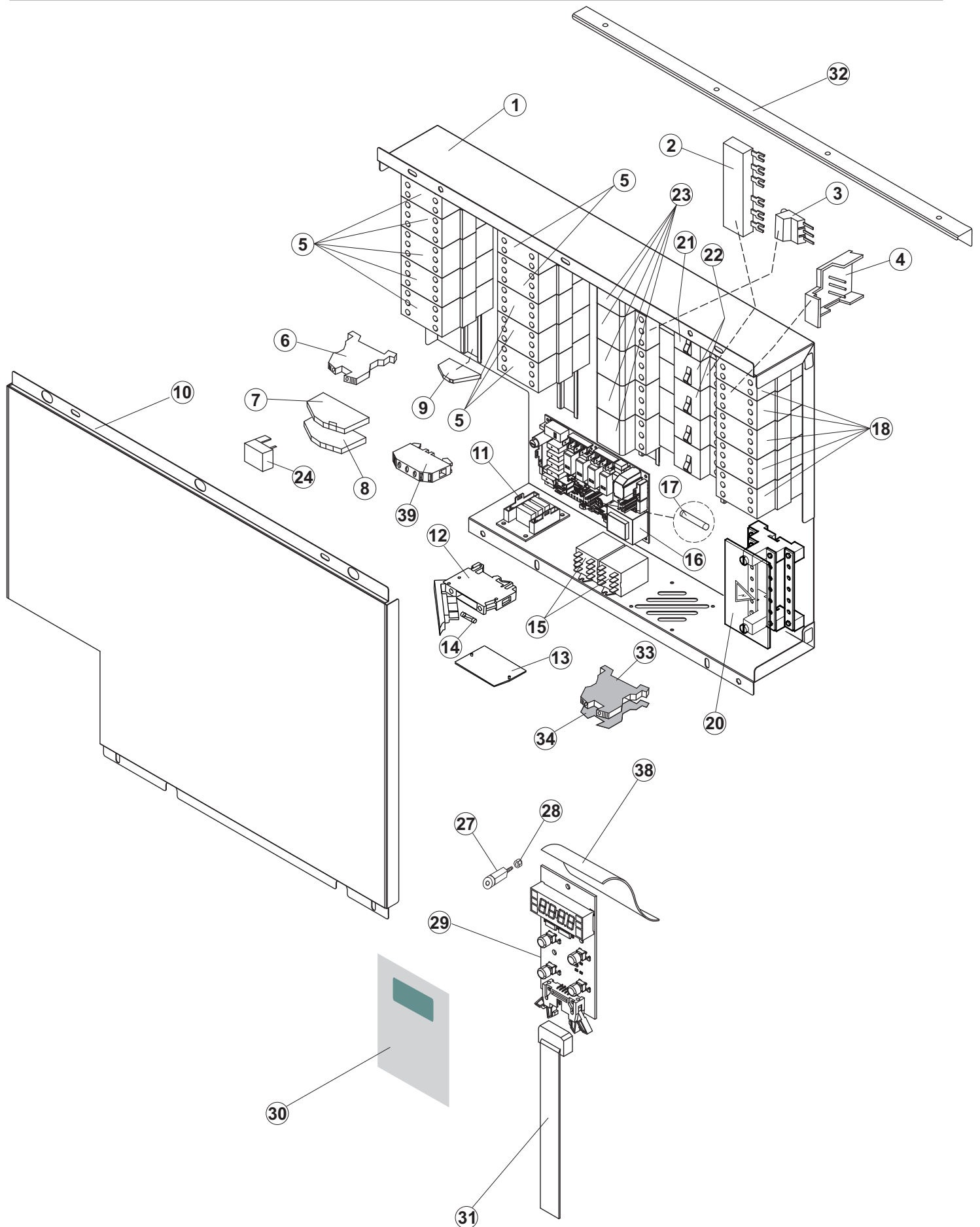
LTD821

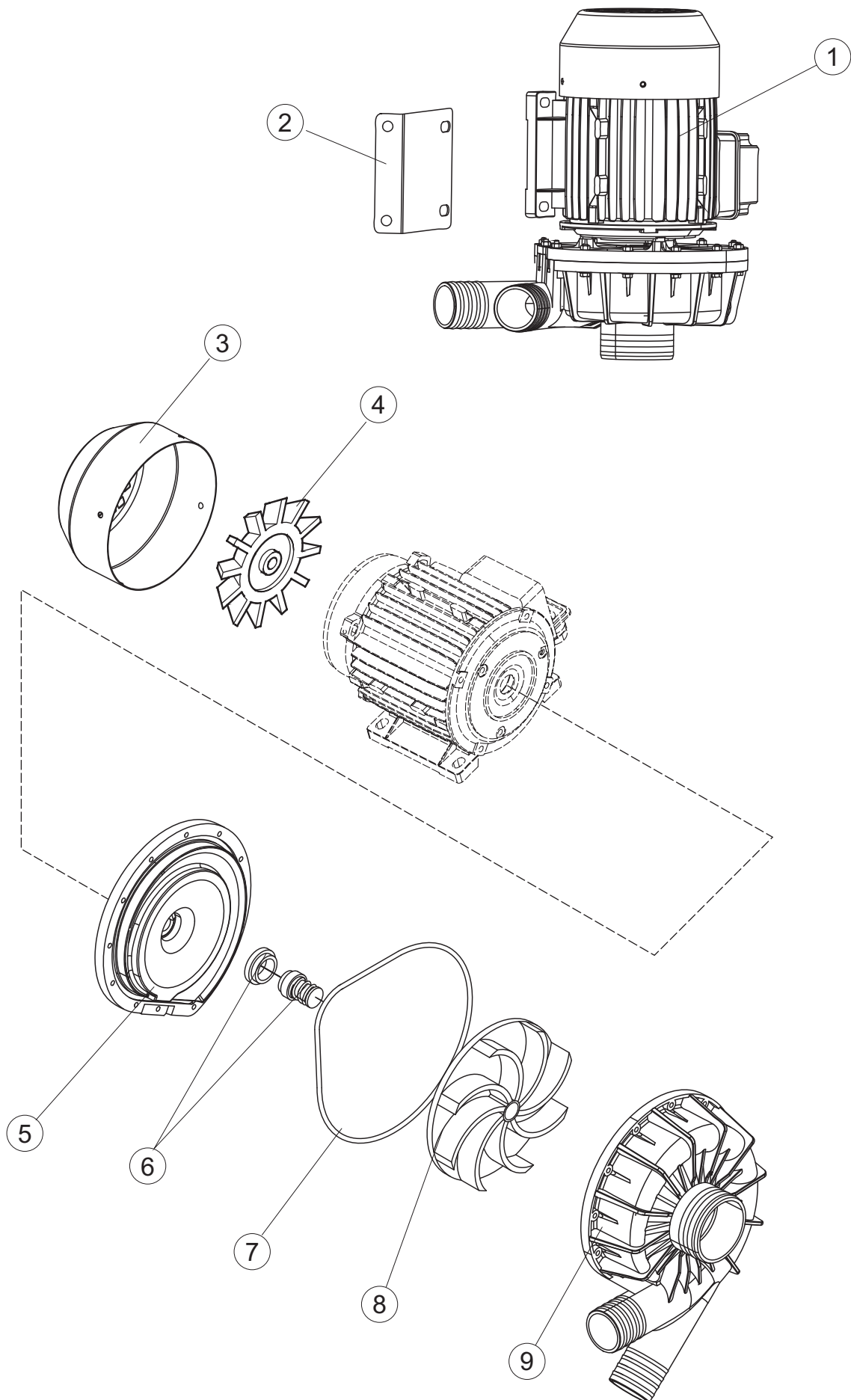












(*) Recommended spare part.

Page	Spare part position	Spare part code no.	Old code number	Description	U.m.	Price euro
1	1	65244		PRICE TO BE DEFINED (PART NR. REPLACED BY 65448)		
1	1	65448		TOP BACK PANEL	NR	265,80
1	2	65080		BACK PANEL	NR	65,78
1	3	65035		FRONT PANEL	NR	54,81
1	4	65258		CORNER REAR RIGHT PANEL	NR	99,49
1	5	65337		SUPPORTING UPRIGHT	NR	127,97
1	6	65054		SIDE PANEL	NR	75,03
1	7	73100		FOOT	NR	20,18
1	8	65066		FRONT PANEL TIPO C4-2 CPL	NR	141,87
1	9	K65282		KIT DOOR WASH UNIT	NR	749,24
1	10	65654		DOOR SPRING KIT	NR	185,42
1	11	65338		CORNER FRONT RIGHT PANEL	NR	108,34
1	14	65259		CORNER REAR LEFT PANEL	NR	97,94
1	15	65050		TOP PANEL	NR	142,38
1	16	65256		BRACKET	NR	5,22
1	17	80871		MAGNETIC DOOR SWITCH	NR	21,76
1	18	927088	CWM7	MAGNET FOR HOOD MICROSWITCH	NR	14,73
1	21	75064		DOOR SAFETY HOOK FOR RACK-CONVEYOR	NR	18,60
1	22	75647		SLIDES CONVEYOR DOOR	NR	11,96
1	50	65337		SUPPORTING UPRIGHT	NR	127,97
1	51	65338		CORNER FRONT RIGHT PANEL	NR	108,34
2	1	75124		CURTAIN SUPPORT FOR RACK-CONVEYOR DISH-	NR	28,56
2	2	65128		SUPPORT BRACKET	NR	5,89
2	3	65210		CURTAIN	NR	157,50
2	4	65162		CURTAIN SUPPORTING BRACKET	NR	33,06
2	5	65227		CURTAIN	NR	64,83
2	6	70100		WASHPUMP	NR	518,62
2	7	65265		COMPLETE WASH ARM	NR	73,06
2	8	CGR4131NT		O-RING	NR	3,95
2	9	75645		CONNECTING ARM	NR	36,60
2	10	437050	REB437050	GASKET	NR	2,50
2	11	75155		PIPE FITTING	NR	10,62

(*) Recommended spare part.

Page	Spare part position	Spare part code no.	Old code number	Description	U.m.	Price euro
2	12	CFS32		PRICE TO BE DEFINED		
2	13	75154		DELIVERY WASH HOSE	NR	9,50
2	14	65177		PIPE	NR	57,74
2	15	65210		CURTAIN	NR	157,50
2	16	CFS2		CLAMP, TORRO W1/W2B 50-70/12	NR	6,63
2	17	65624		PIPE	NR	55,91
2	18	65326		SUPPORT BRACKET	NR	15,45
2	19	65330		BRACKET	NR	55,74
2	20	CFS3		CLAMP, HOSE-TYPE TORRO W2B 60-80/12	NR	9,33
2	21	926056	DZG461	PIPE ELBOW	NR	29,53
2	23	75661		PUMP ASPIRATION FILTER	NR	26,37
2	24	K65176		PIPE + PARZ.77018	NR	58,10
2	25	42092	C.42092	ASPIRATION FILTER SLIDE	NR	36,60
2	26	65623		PIPE	NR	61,40
2	27	472061		PART NUMBER NO LONGER AVAILABLE		
2	28	65293		BRACKET	NR	48,72
2	29	75864		OVERFLOW PIPE	NR	31,87
2	30	75105		SUPPORT BRACKET	NR	41,03
2	31	CGR4131NT		O-RING	NR	3,95
2	32	75871		DRAIN CONNECTION	NR	19,23
2	33	75873		GASKET	NR	3,07
2	34	75872		NUT WASTE DRAIN	NR	11,34
2	35	75639		DRAIN FITTING (PLASTIC)	NR	26,37
2	36	DAS20206		PRICE TO BE DEFINED		
2	37	926049	DEP45	PRESSURE SWITCH	NR	27,89
2	38	CVZ4		SCREW	NR	0,72
2	39	75429		COLLECTING FILTER WITH WEIGHT	NR	83,00
2	40	75428		WEIGHT FOR BASKET STAINER	NR	33,97
2	41	CVI1101		SCREW, INOX 4MAX10 TC/CROSS	NR	1,27
2	42	417091		NUT - SELF-LOCK	NR	1,28
2	43	75515		STAINER	NR	65,61
2	44	417091		NUT - SELF-LOCK	NR	1,28

(*) Recommended spare part.

Page	Spare part position	Spare part code no.	Old code number	Description	U.m.	Price euro
2	45	75513		PRICE TO BE DEFINED		
2	46	75514		PRICE TO BE DEFINED		
2	47	CFS1A		HOSE CLAMP	NR	4,39
2	50	984005	REB984005	AIR TRAP, ASSY	NR	14,60
2	51	143005	SPG10	LINEN RUBBER PIPE 5X12 - BLACK	MT	12,39
2	52	468029	REB468029	AIR TRAP CONNECTION OF PRESSURE SWITCH	NR	2,35
2	53	456020	REB456020	O-RING	NR	1,28
2	54	437019	REB437019	PACKING FOR AIR TRAP OF PRESSURE SWITCH	NR	1,28
2	55	75648		CONNECTING ARM	NR	36,60
2	57	H.775489-001		SUPPORT TEMPERATURE PROBE	NR	5,34
2	58	231016		TEMPERATURE PROBE	NR	28,46
2	59	80397C		HEATING ELEMENT 10500W 230/400V	NR	144,20
2	60	456002	REB456002	O-RING	NR	1,28
2	61	69870		BOILER HEATING ELEMENT PROTECTION	NR	3,96
2	62	67870		THERMOSTAT	NR	31,54
2	70	77121		CURTAIN SUPPORT FOR RACK-CONVEYOR DISH-	NR	35,20
3	1	927057		THERMOSTAT	NR	38,32
3	2	69871		PROBE HOLDER	NR	11,15
3	3	231016		TEMPERATURE PROBE	NR	28,46
3	4	69870		BOILER HEATING ELEMENT PROTECTION	NR	3,96
3	5	456002	REB456002	O-RING	NR	1,28
3	6	926053	DWT100	CLOSED FLANGE CAP (170880543)	NR	12,30
3	7	230083C	REB230083C	HEATING ELEMENT 6KW	NR	84,87
3	8	230020C	REB230020C	KIT HEATING ELEMENTS REB230020 (8KW)	NR	89,85
3	9	80398C	C.80398C	READY-TO-ASSEMBLE KIT FOR HEATING	NR	125,35
3	10	65700		BOILER	NR	298,37
3	11	65875		CAP CHROME-PLATED BRASS	NR	3,16
3	13	K65271		PRICE TO BE DEFINED (PART NR. REPLACED BY 65018)		
3	13	65018		PIPE FITTING	NR	17,59
3	14	65245		COVER INSULATION	NR	32,86
3	15	143010	SPG61	RUBBER PIPE 12X19,5	MT	12,37
3	16	65582		BRACKET	NR	27,05

(*) Recommended spare part.

Page	Spare part position	Spare part code no.	Old code number	Description	U.m.	Price euro
3	17	65588		SUPPORT BRACKET RINSE ARM	NR	32,96
3	18	65786		RINSE ARM	NR	154,50
3	19	65950		STAINLESS STEEL RINSE SPRAY NOZZLE	NR	18,31
3	20	65727		O-RING 2050 12.42X1.78 EPDM 70SH A	NR	0,56
3	21	65883		INTERNAL RINSE PIPE FITTING AISI303	NR	41,40
3	22	65745		PRICE TO BE DEFINED (PART NR. REPLACED BY 66945)		
3	22	66945		PIPE FITTING	NR	40,28
3	23	H.882974-001		MAINFOLD	NR	14,24
3	24	929163	DZR2622	BRASS RUBBER-PIPE HOLDER CONNECTION 3/8	NR	22,15
3	25	927013		PRICE TO BE DEFINED (PART NR. REPLACED BY 65876)		
3	25	65876		UNION ELBOW 3/8" AISI316	NR	7,28
3	26	75835		FLOW REDUCER	NR	3,24
3	27	929172		SOLENOID VALVE	NR	25,37
3	28	437041	REB437041	GASKET	NR	1,54
3	29	143270		INLET WRAS PIPE	NR	7,21
3	31	927322	CFS14	HOSE CLAMP	NR	3,14
3	33	144010NT	REB144010NT	NON-RETURN VALVE	NR	15,57
3	40	65545		RINSE ARM	NR	64,09
3	59	65749		GASKET ES/AM VERDE 33X21X1,5	NR	0,88
3	75	65747-A		RINSE PIPE L 200 RACC 90	NR	16,32
3	76	65747-B		RINSE PIPE L 380 RACC 90	NR	16,32
4	1	75058		WASHER	NR	15,81
4	2	75234		PIVOT	NR	11,20
4	3	75649		SPLASH PROTECTION	NR	17,57
4	4	65235		GEAR SHAFT CONVEYOR	NR	135,09
4	5	65235C		GEARED MOTOR KEY	NR	25,60
4	6	K75141		UPPER FLANGE SHAFT CONVEYOR	NR	67,63
4	7	75168		GASKET	NR	6,29
4	8	K75057		LOWER BUSH & SEAL	NR	60,39
4	9	65923		GEARMOTOR SW050PA MEC71B5 I=50	NR	695,03
4	10	927104	DPM120	MOTOR 180W V 230/400	NR	399,84
4	11	CMT13		SPRING	NR	4,68

(*) Recommended spare part.

Page	Spare part position	Spare part code no.	Old code number	Description	U.m.	Price euro
4	12	60354		SCREW	NR	26,70
4	13	75869		RACK CONVEYOR	NR	327,88
4	14	K65024		RACK SLIDE RACKCONVEYOR ONLY SPARE PART	NR	103,33
4	15	K75649		KIT PROTECTIVE PLATE OF SPLASHING WATER	NR	73,40
4	16	75310		SCREW	NR	0,35
4	17	75076		BUFFER FOR DRIVE STOP	NR	3,90
4	18	CDI206AU		NUT - SELF-LOCK	NR	1,53
4	19	75073		RACK CONVEYOR HANDLE	NR	58,24
4	20	927088	CWM7	MAGNET FOR HOOD MICROSWITCH	NR	14,73
4	21	75077		BUSH	NR	7,89
4	22	75071		RACK CONVEYOR COG	NR	16,47
4	23	CVI172		SCREW, INOX SPEC.6MAX16 T.1/2 T. POELIER	NR	1,52
4	24	75075		SLED CART TOWING	NR	5,22
4	25	65022		PRICE TO BE DEFINED		
4	26	75110		BRACKET ECONOMIZER	NR	12,58
4	27	75095		OPERATED RINSING LEVER	NR	50,33
4	28	486169	REB486169	STAINLESS STEEL SCREW 4MAX10 TBCR-SP	NR	2,68
4	29	65217		PRICE TO BE DEFINED		
4	30	75868		TOWING RACK	NR	224,72
4	32	927246	DEM11NT	MICROSWITCH	NR	34,03
4	33	927095	DWA202	SEAL RING MIM 30X40X7 (MIM 30407)	NR	15,92
4	35	75218		SUPPORT BRACKET	NR	14,53
4	45	80871		MAGNETIC DOOR SWITCH	NR	21,76
5	1	65680		PANEL FOR ELECTRICAL COMPONENTS	NR	135,06
5	2	80829		BAR ELECTRICAL CONNECTION	NR	37,89
5	3	80826		POWER CONNECTOR	NR	59,13
5	4	73830		CONNECTOR	NR	23,19
5	5	73351		CONTACTOR	NR	88,77
5	6	927115	DEM4L	TERMINAL BLOCK	NR	12,53
5	7	80822		PRICE TO BE DEFINED (PART NR. REPLACED BY 74935)		
5	7	74935		FUSE-HOLDER	NR	8,24
5	8	80824		PART NUMBER NO LONGER AVAILABLE		

(*) Recommended spare part.

Page	Spare part position	Spare part code no.	Old code number	Description	U.m.	Price euro
5	9	75817		ELECTRICAL CONNECTOR FOR U-SHAPED BAR	NR	2,80
5	10	65683		COVER	NR	34,33
5	11	74903		MAIN BOARD	NR	95,32
5	12	H.228047		PRICE TO BE DEFINED (PART NR. REPLACED BY 74935)		
5	12	74935		FUSE-HOLDER	NR	8,24
5	13	H.228048		PRICE TO BE DEFINED		
5	14	228014		PRICE TO BE DEFINED (PART NR. REPLACED BY 228010)		
5	14	228010		FUSE	NR	1,46
5	15	229036		RELAY	NR	29,22
5	16	215042-2		MAIN BOARD 215042+ FIRMWARE26(FW_0_XXA.Q014)	NR	200,67
5	17	228010		FUSE	NR	1,46
5	18	73350		CONTACTOR	NR	46,15
5	20	75983		TERMINAL BLOCK	NR	182,72
5	21	DEI40N		AUTOMATIC SWITCH	NR	148,13
5	22	DEI36N		AUTOMATIC SWITCH	NR	148,13
5	23	927038	DEP2F	FUSE-HOLDER - TRIPOLAR GK1-DF	NR	61,29
5	24	80825		PART NUMBER NO LONGER AVAILABLE		
5	27	419036		INTERFACE BOARD DISTANCE KEEPERS	NR	8,49
5	28	417119		NUT	NR	1,81
5	29	74901		CONTROL KEYBOARD	NR	53,57
5	30	66749		CONTROL ADHESIVE INTERFACE MOD. LTD MBM L=137	NR	32,16
5	31	80934		FLAT CABLE	NR	17,62
5	32	65491		BRACKET	NR	28,80
5	33	65980		TERMINAL	NR	24,36
5	34	65981		PLUG	NR	3,14
5	38	214088		PVC CURTAIN FOR ELECTRIC PROTECTION	NR	17,22
5	39	927114	DEM27	TERMINAL BLOCK	NR	33,78
6	1	70100		WASHPUMP	NR	518,62
6	2	70105		BRACKET	NR	18,55
6	3	70940		ELECTROPUMP FAN COVER	NR	42,20
6	4	70939		WASHPUMP FUN	NR	21,99
6	5	70941		PART NUMBER NO LONGER AVAILABLE		

(*) Recommended spare part.

Page	Spare part position	Spare part code no.	Old code number	Description	U.m.	Price euro
6	6	70942		WASHPUMP SHAFT SEAL	NR	47,73
6	7	70943		O-RING	NR	30,98
6	8	70944		ELECTROPUMP IMPELLER	NR	42,64
6	9	70945		ELECTROPUMP HOUSING	NR	62,64