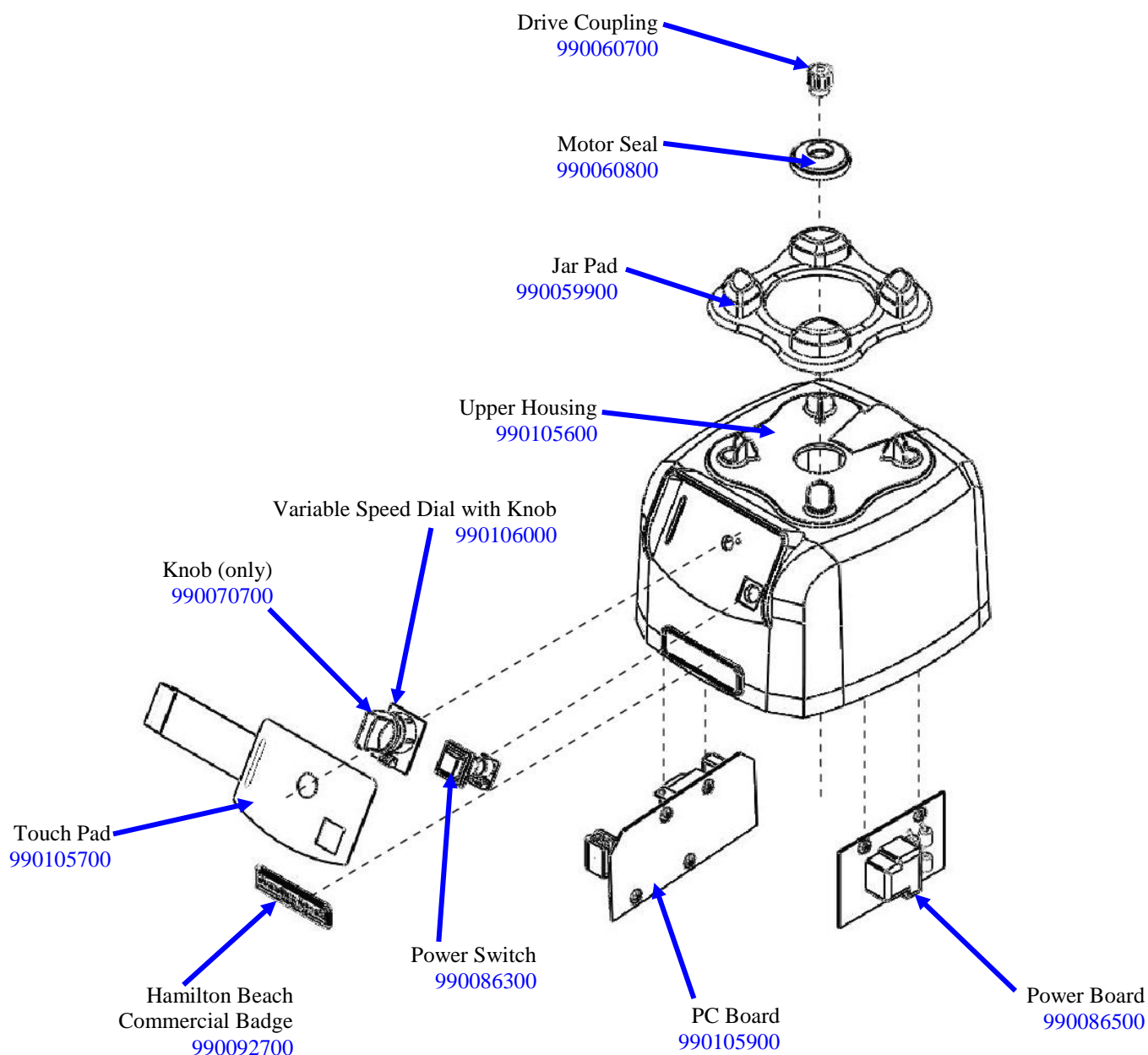



## Replacement Parts Diagrams

### HBF600-CE

**PROPRIETARY RIGHTS NOTICE** This document and all information contained within it is the property of Hamilton Beach Brands, Inc. (HBB). It is confidential and proprietary and has been provided to you for a limited purpose. It must be returned or destroyed upon request. Disclosure, reproduction or use of this document and any information contained within it, in full or in part, for any purpose is forbidden without the prior written consent of HBB. No photographs may be taken of any article fabricated or assembled from this document without the prior written consent of HBB.

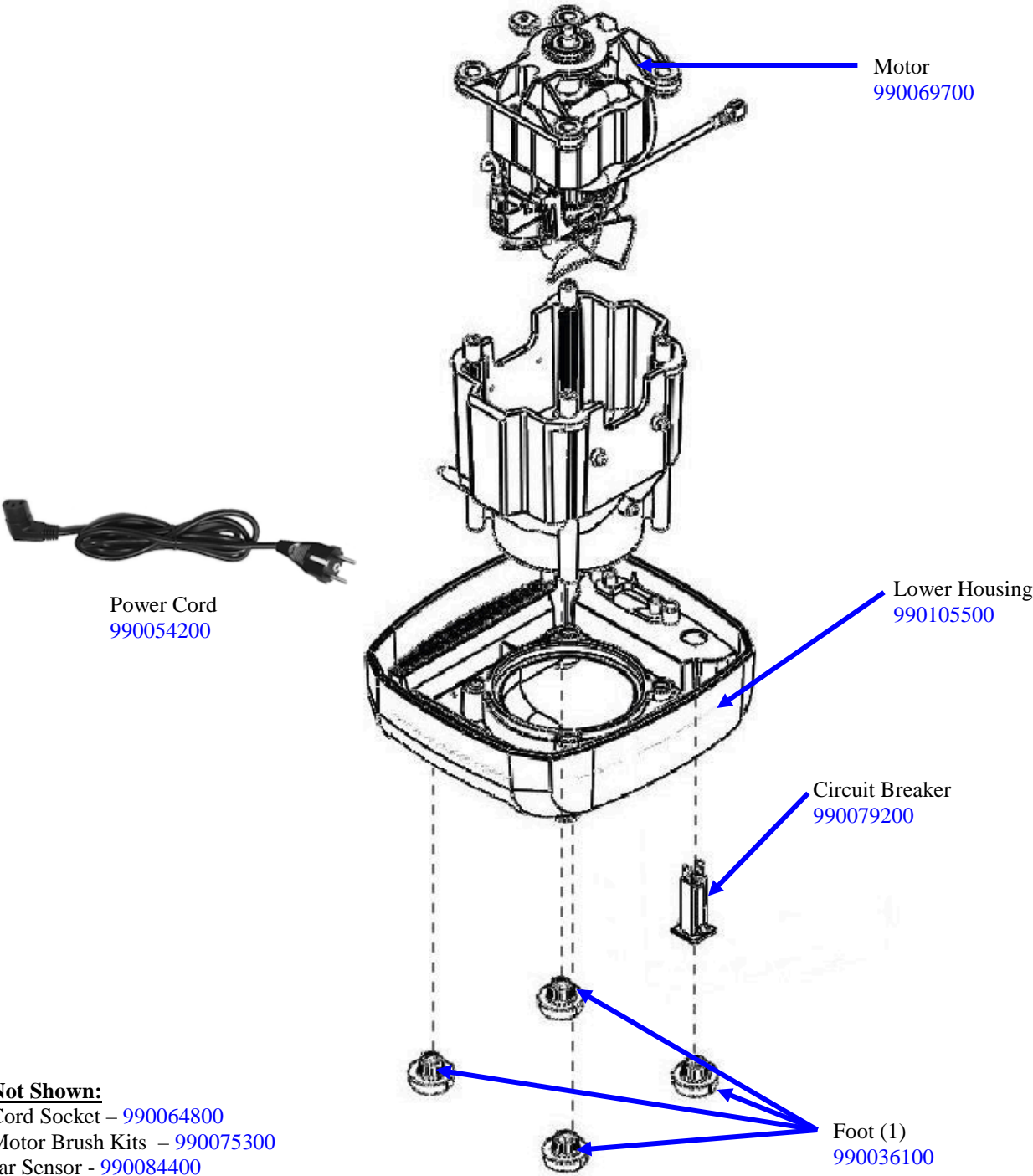



 4421 Waterfront Drive Glen Allen, VA 23060	Revision Description:		Add Food Bands									
	Request Number:		DOC9613		Revision Date:		12/27/18		Approved by:		DOC9613	
	Issue Code(s):		CS, SP		Page:	1 of 5	Document #:	540002300		Rev:	E	

Replacement Parts Diagrams

HBF600-CE

**PROPRIETARY RIGHTS NOTICE** This document and all information contained within it is the property of Hamilton Beach Brands, Inc. (HBB). It is confidential and proprietary and has been provided to you for a limited purpose. It must be returned or destroyed upon request. Disclosure, reproduction or use of this document and any information contained within it, in full or in part, for any purpose is forbidden without the prior written consent of HBB. No photographs may be taken of any article fabricated or assembled from this document without the prior written consent of HBB.

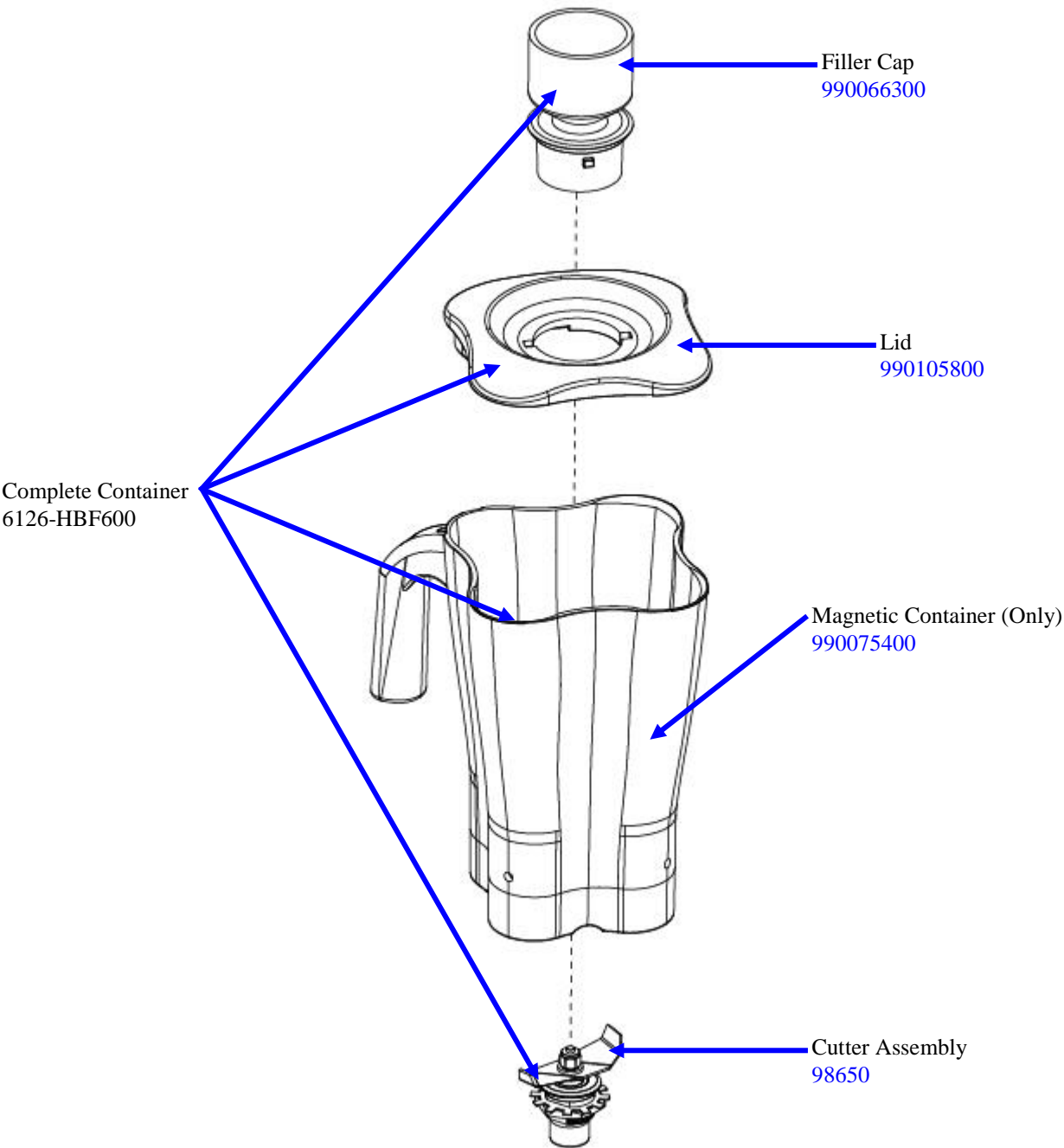



 4421 Waterfront Drive Glen Allen, VA 23060	Revision Description:		Add Food Bands									
	Request Number:		DOC9613		Revision Date:		12/27/18		Approved by:		DOC9613	
	Issue Code(s):		CS, SP		Page:	2 of 5	Document #:		540002300		Rev:	E

Replacement Parts Diagrams

HBF600-CE

**PROPRIETARY RIGHTS NOTICE** This document and all information contained within it is the property of Hamilton Beach Brands, Inc. (HBB). It is confidential and proprietary and has been provided to you for a limited purpose. It must be returned or destroyed upon request. Disclosure, reproduction or use of this document and any information contained within it, in full or in part, for any purpose is forbidden without the prior written consent of HBB. No photographs may be taken of any article fabricated or assembled from this document without the prior written consent of HBB.



 4421 Waterfront Drive Glen Allen, VA 23060	Revision Description:		Add Food Bands									
	Request Number:		DOC9613		Revision Date:		12/27/18		Approved by:		DOC9613	
	Issue Code(s):		CS, SP		Page:	3 of 5	Document #:	540002300		Rev:	E	

## Replacement Parts Diagrams

### HBF600-CE

**PROPRIETARY RIGHTS NOTICE** This document and all information contained within it is the property of Hamilton Beach Brands, Inc. (HBB). It is confidential and proprietary and has been provided to you for a limited purpose. It must be returned or destroyed upon request. Disclosure, reproduction or use of this document and any information contained within it, in full or in part, for any purpose is forbidden without the prior written consent of HBB. No photographs may be taken of any article fabricated or assembled from this document without the prior written consent of HBB.

### **Band Complete Set – 990123600 (includes all bands below).**



**Food Band, Purple (Allergy)**

P/N - 990123100

**Food Band, White (Cheese)**

P/N - 990123200



**Food Band, Red (Meat)**

P/N - 990123400



**Food Band, Brown (Seafood)**


P/N - 990123300



**Food Band, Green (Vegetables)**

P/N - 990123500



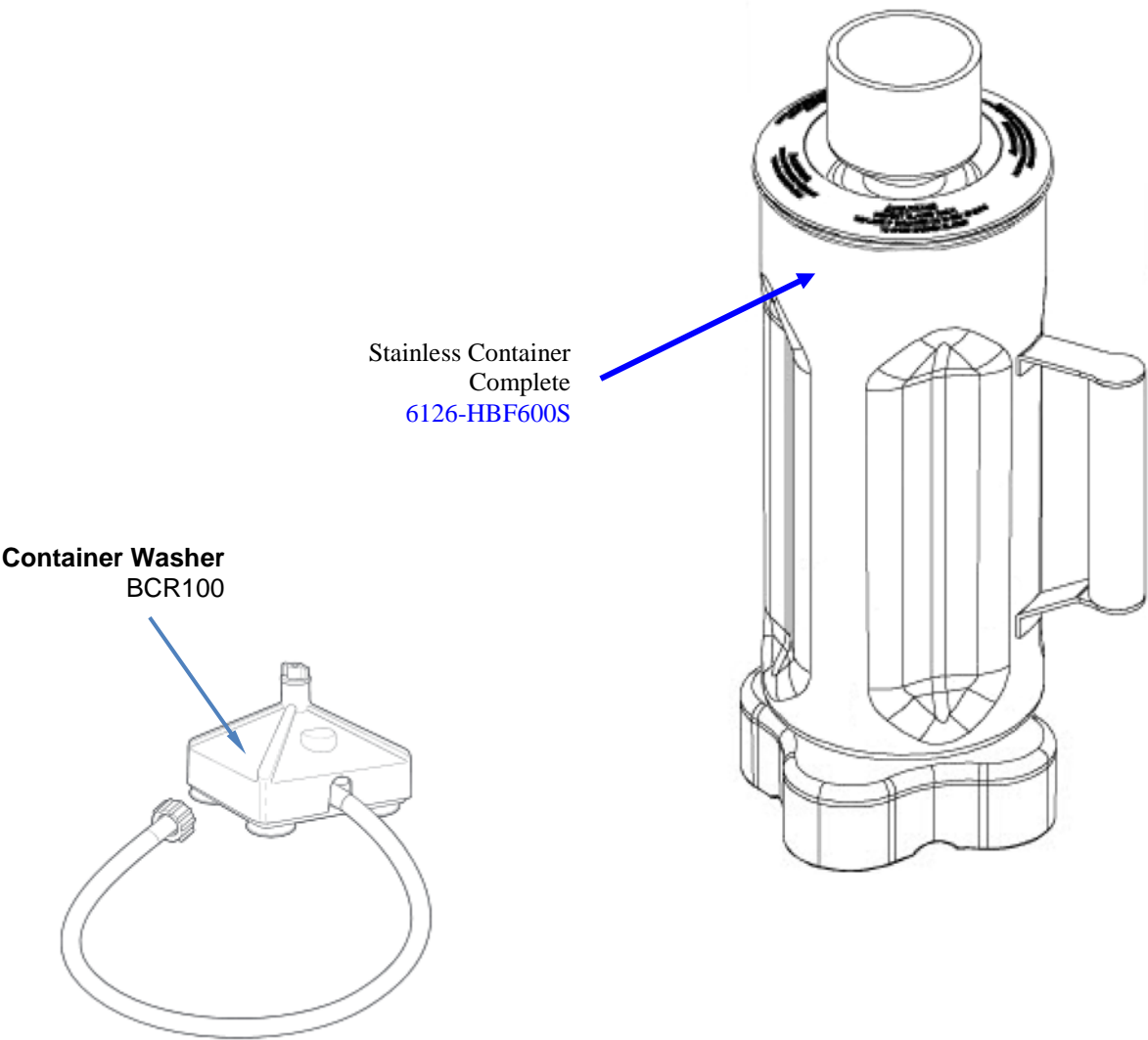
 4421 Waterfront Drive Glen Allen, VA 23060	Revision Description:		Add Food Bands									
	Request Number:		DOC9613		Revision Date:		12/27/18		Approved by:		DOC9613	
	Issue Code(s):		CS, SP		Page:	4 of 5	Document #:		540002300		Rev:	E


**Replacement Parts Diagrams**

**HBF600-CE**

**PROPRIETARY RIGHTS NOTICE** This document and all information contained within it is the property of Hamilton Beach Brands, Inc. (HBB). It is confidential and proprietary and has been provided to you for a limited purpose. It must be returned or destroyed upon request. Disclosure, reproduction or use of this document and any information contained within it, in full or in part, for any purpose is forbidden without the prior written consent of HBB. No photographs may be taken of any article fabricated or assembled from this document without the prior written consent of HBB.

**Accessories**



 <b>Hamilton Beach</b> 4421 Waterfront Drive Glen Allen, VA 23060	Revision Description:		Add Food Bands									
	Request Number:		DOC9613		Revision Date:		12/27/18		Approved by:		DOC9613	
	Issue Code(s):		CS, SP		Page:	5 of 5	Document #:	540002300		Rev:	E	